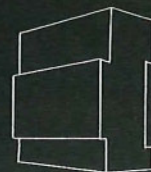




projecttoelichting

ssa/a11 - project: centrale bedieningspost kanaal leuven-dijle kampenhout-sas





ligging - situatie - inplanting

ssa/a11 - project: centrale bedieningspost kanaal leuven-dijle kampenhout-sas



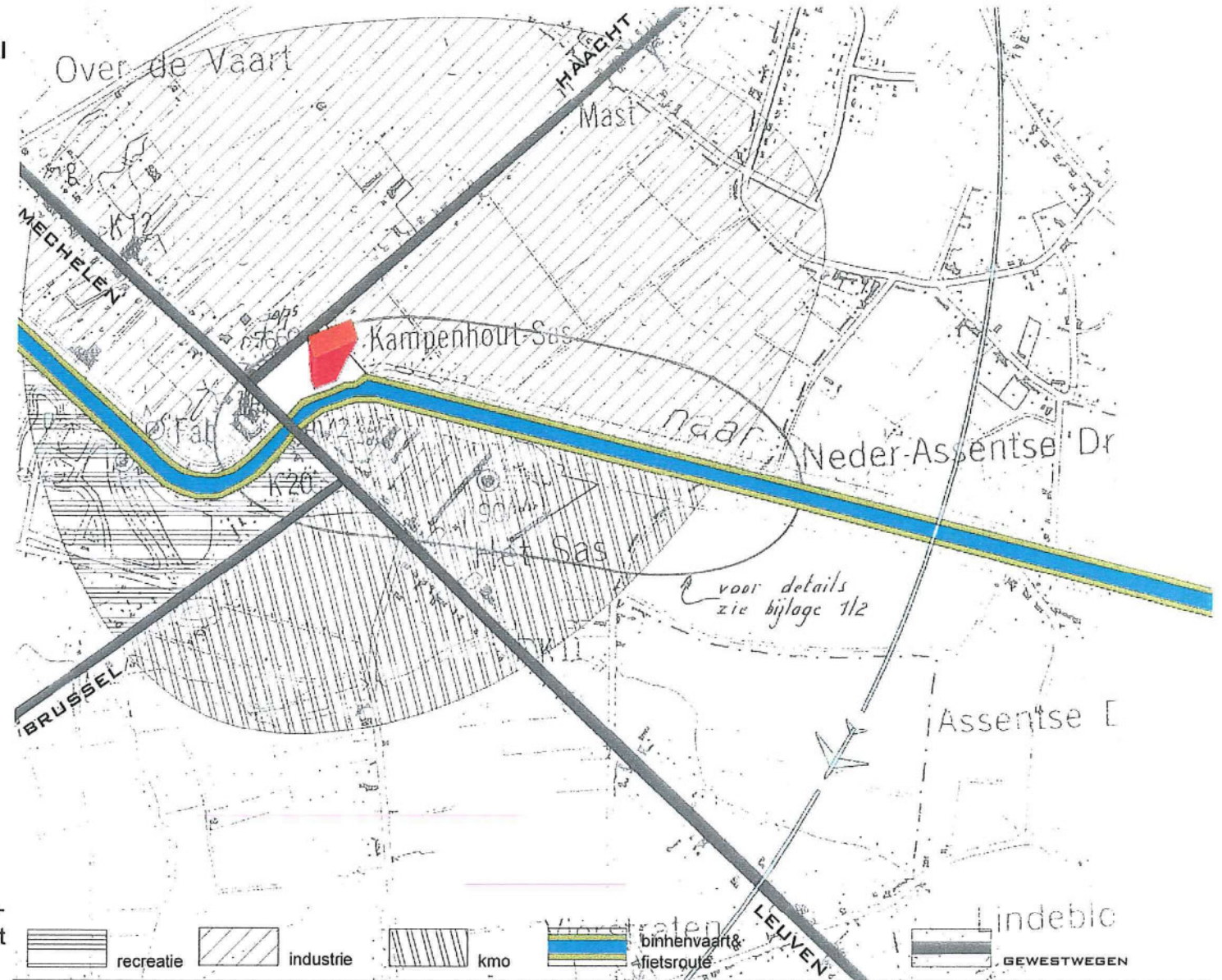
Economisch knooppunt van provinciaal niveau

Infrastructuren

- vliegrouete Zaventem
- wegverkeer 'steenwegen'
 - N26 Leuven-Mechelen
 - N21 Brussel-Haacht
- binnenvaart kanaal Leuven-Dijle
- fietsroute

Bestemmingen in de nabijheid van de site

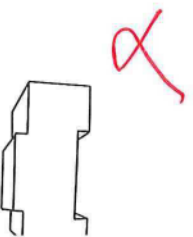
- industriezone
- KMO-zone
- recreatief gebruik van kanaal en oevers



Keuze van de bouwheer om de centrale bedieningspost binnen de invloedssfeer van het knooppunt te plaatsen.

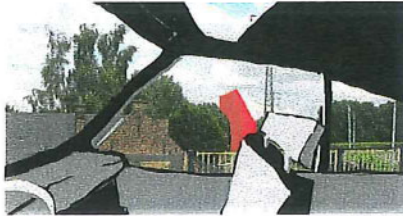
LIGGINGSPAN schaal 1/10 000

ssa/a11 - project: centrale bedieningspost kanaal leuven-dijle kampenhout-sas



Uitgangspunten voor de inplanting

zichtlocatie



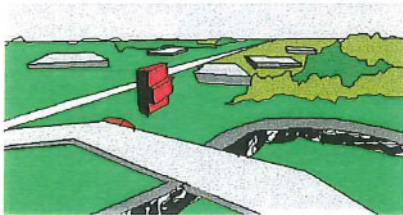
continuïteit

met kanaalgebonden diensten en industrie:
plaats in de onmiddellijke omgeving van de
trekweg en de voetgangersoversteken



aansluiting op industrieterrein

doch met duidelijk onderscheid in gabarriet en
zonder inname van terrein dat in de toekomst in
aanmerking kan komen voor kanaalgebonden
activiteiten

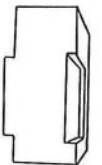


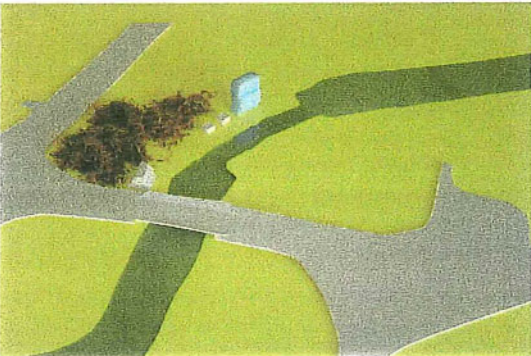
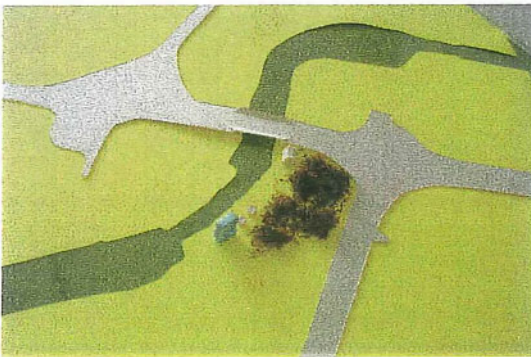
uitzicht op de omliggende panorama's



SITUATIEPLAN schaal 1/2000

ssa/a11 - project: centrale bedieningspost kanaal leuven-dijle kampenhout-sas

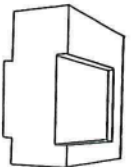




1. verharding in kasseien 2. 10 parkeerplaatsen, stelconplaten 3. nieuwe aanplanting 4. trekweg 5. toegang personeel 6. toegang bezoeker

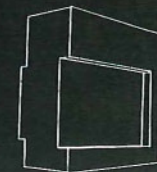
INPLANTINGSPLAN schaal 1/200

ssa/a11 - project: centrale bedieningspost kanaal leuven-dijle kampenhout-sas

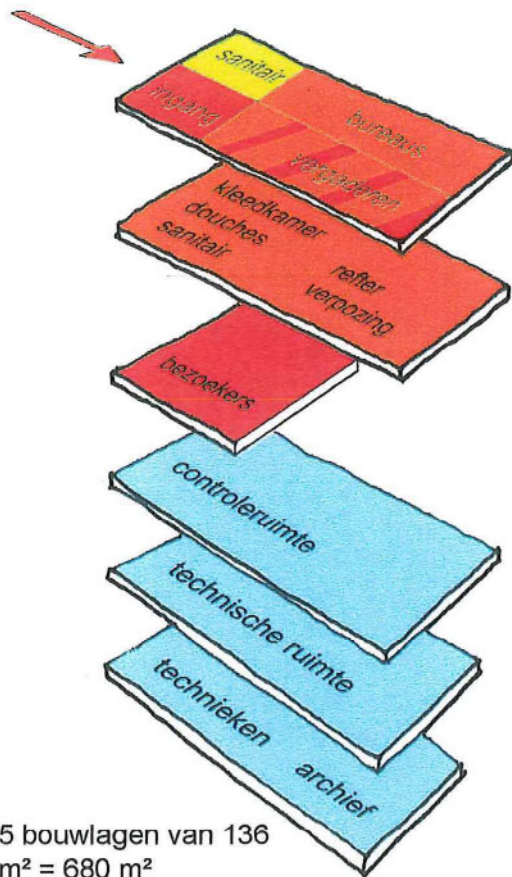




schema's



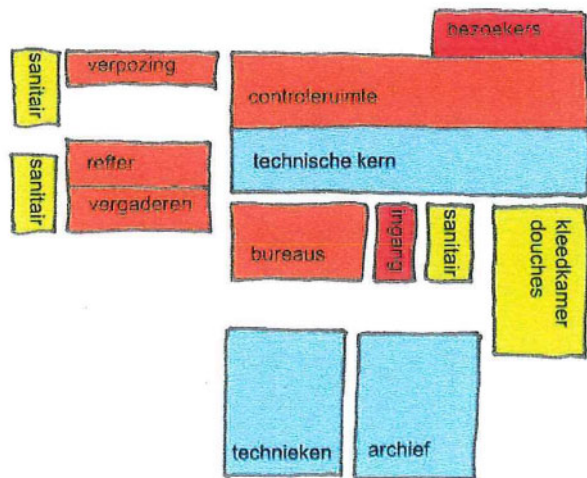
ssa/a11 - project: centrale bedieningspost kanaal leuven-dijle kampenhout-sas



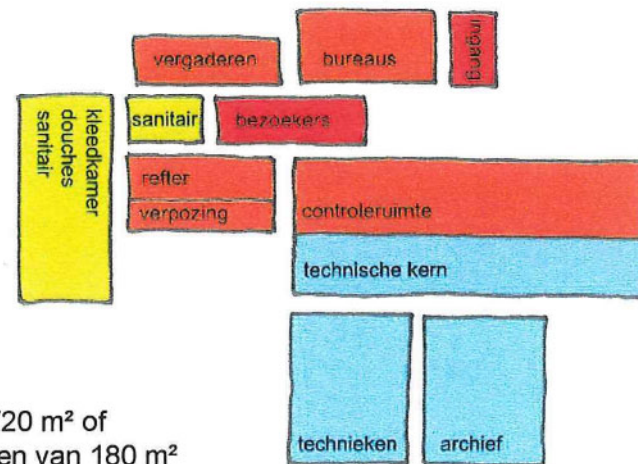
5 bouwlagen van 136
 m² = 680 m²
 (+ 30 m² bezoekers)

stapeling van functionele eenheden in functie van een reductie van de footprint

stapeling in functie van de zichten

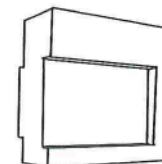


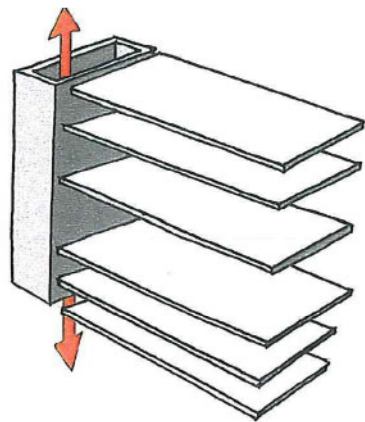
tot. 720 m² of
 4 bouwlagen van 180 m²



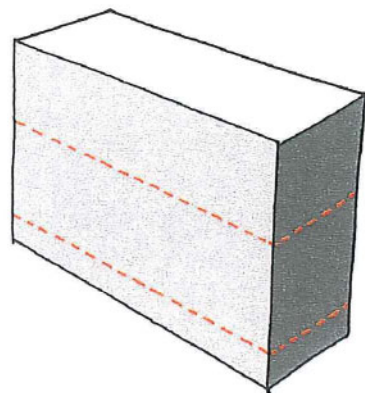
groeperen van de verschillende programma-elementen tot functionele eenheden ruimte voor technieken - personeelsruimte - bezoekerscircuit - sanitaire voorzieningen

schema's

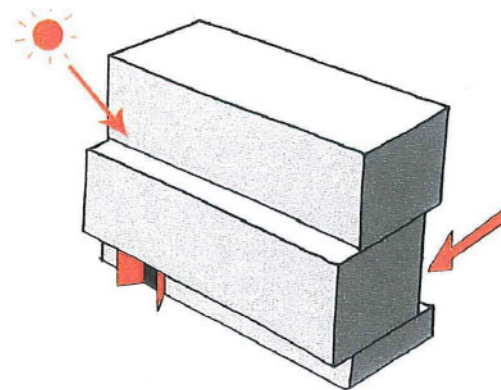




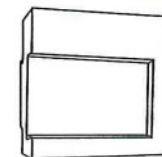
Schema circulatie en vrije plateaus



Schema verschuiving in functie van de oriëntatie



Schema van de draagstructuur

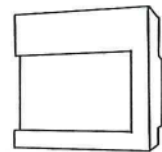
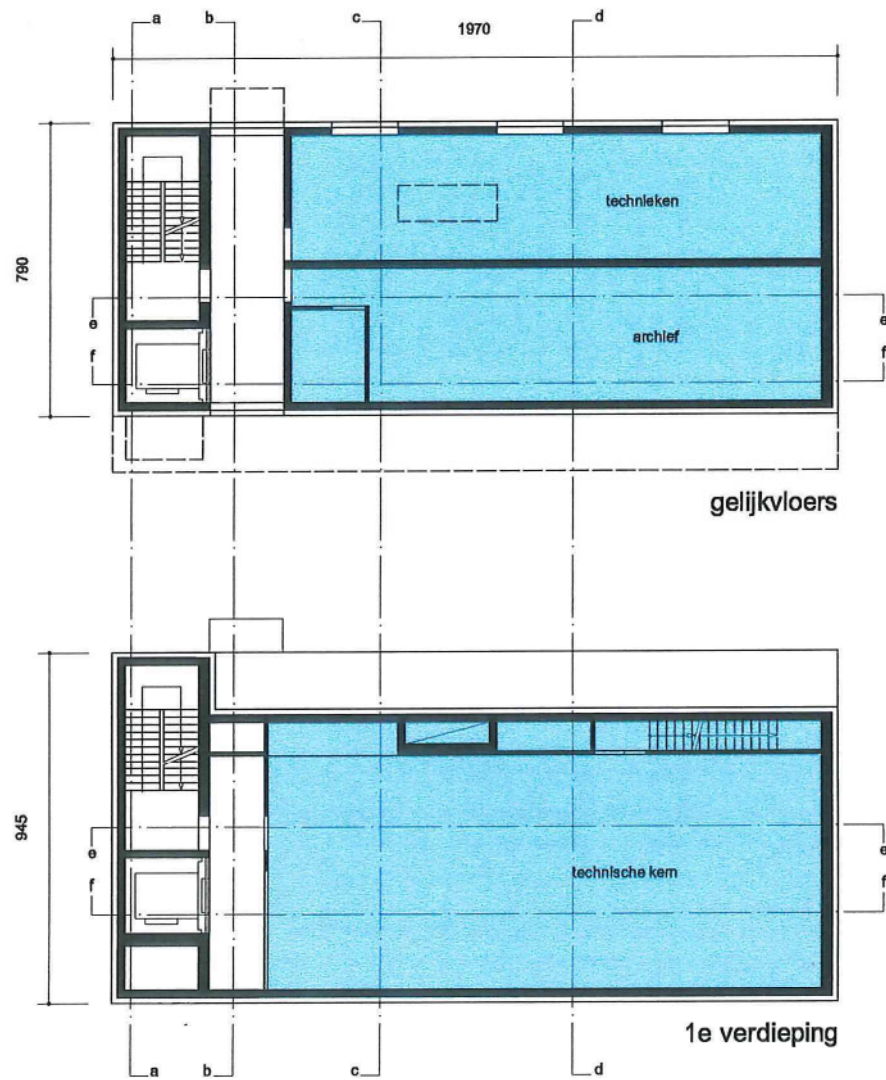


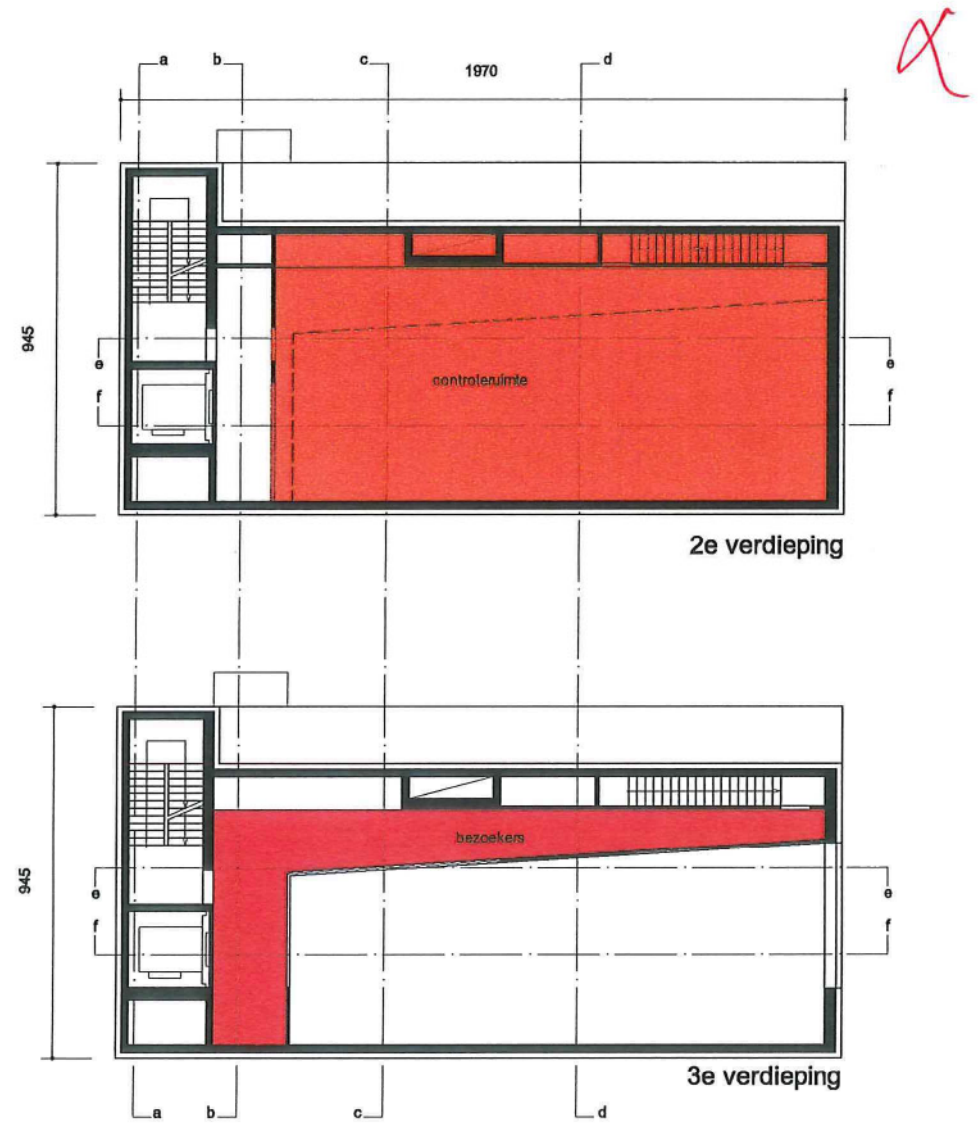
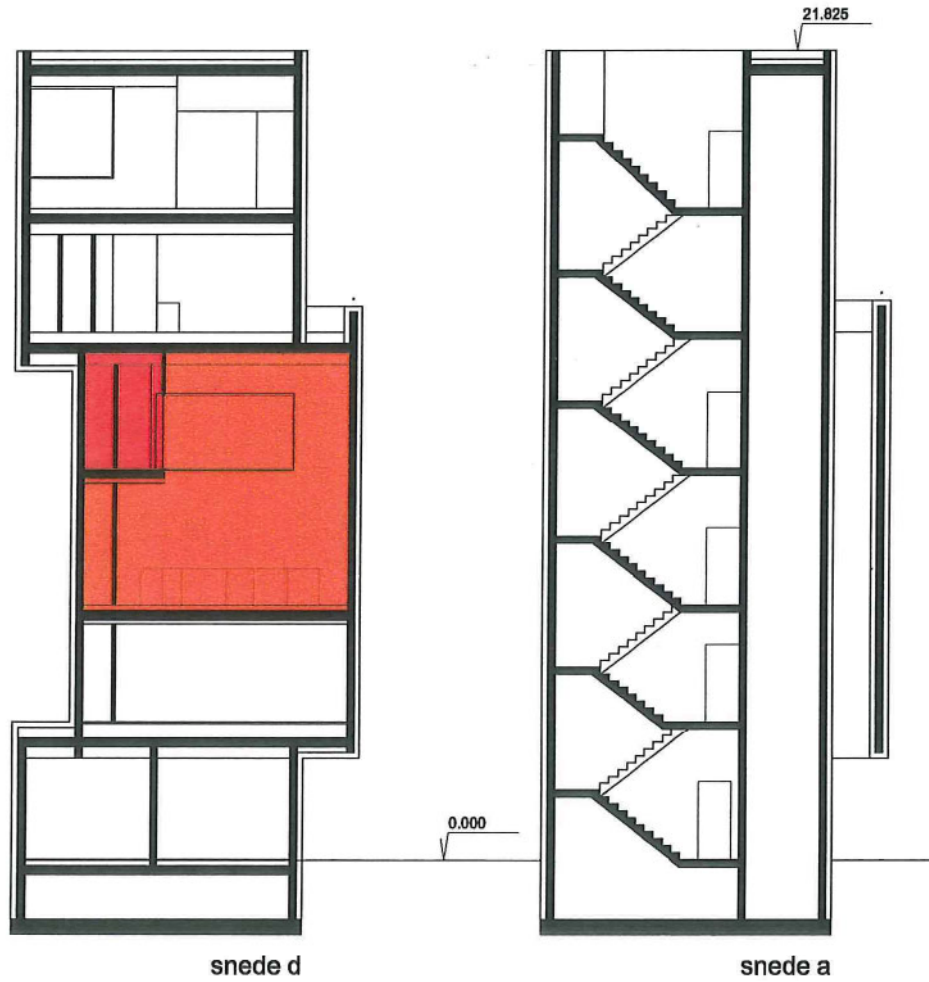


plannen-snedes-gevels 1/200

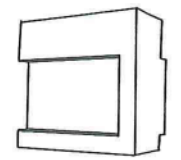
ssa/a11 - project: centrale bedieningspost kanaal leuven-dijle kampenhout-sas

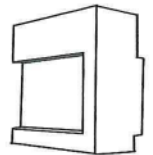
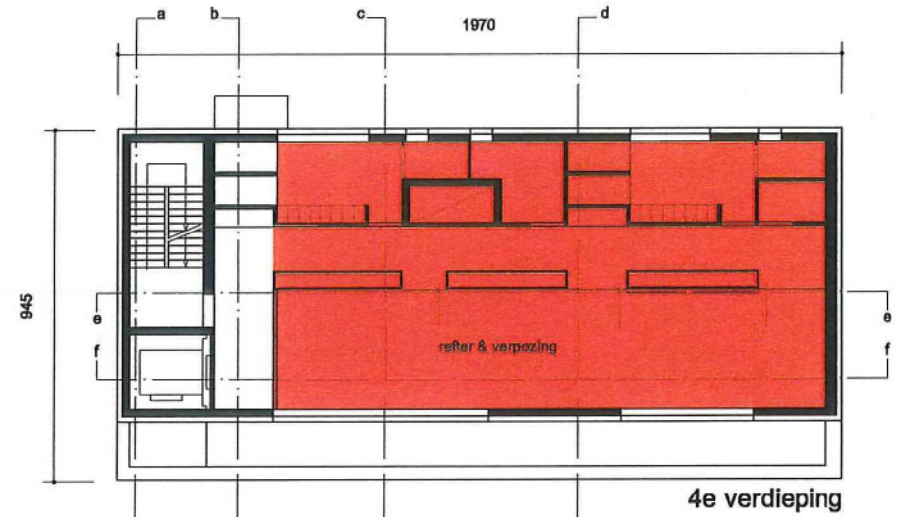
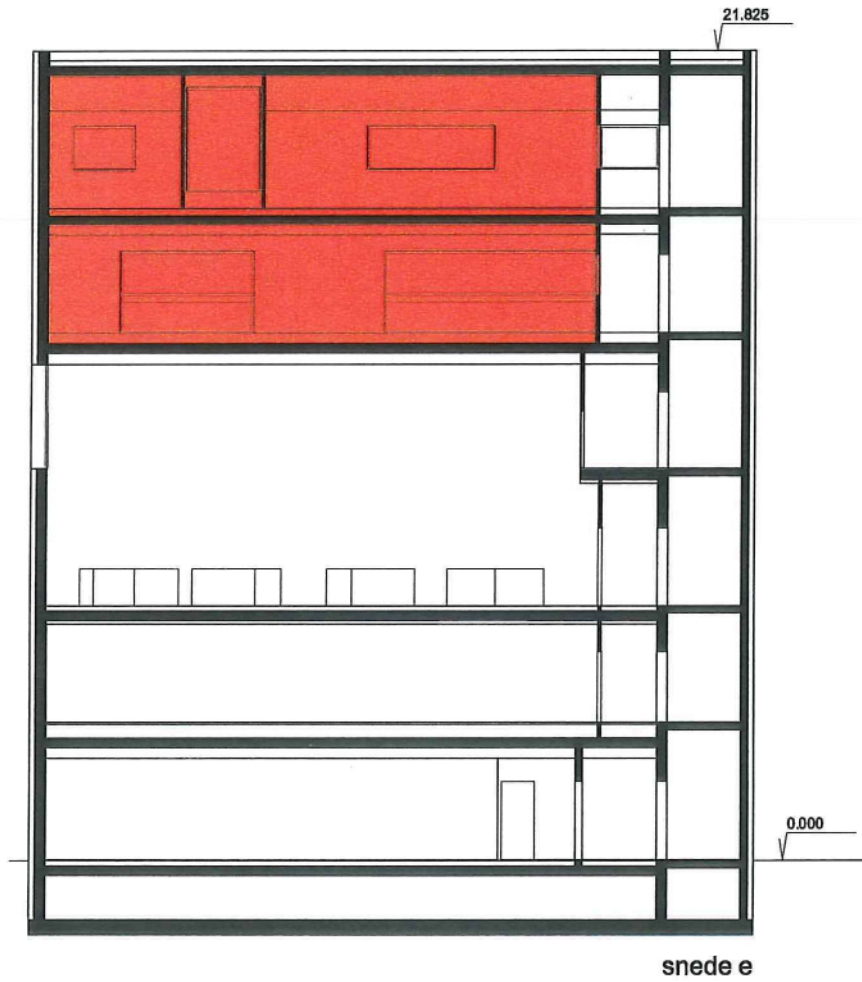


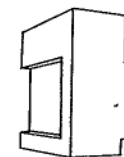
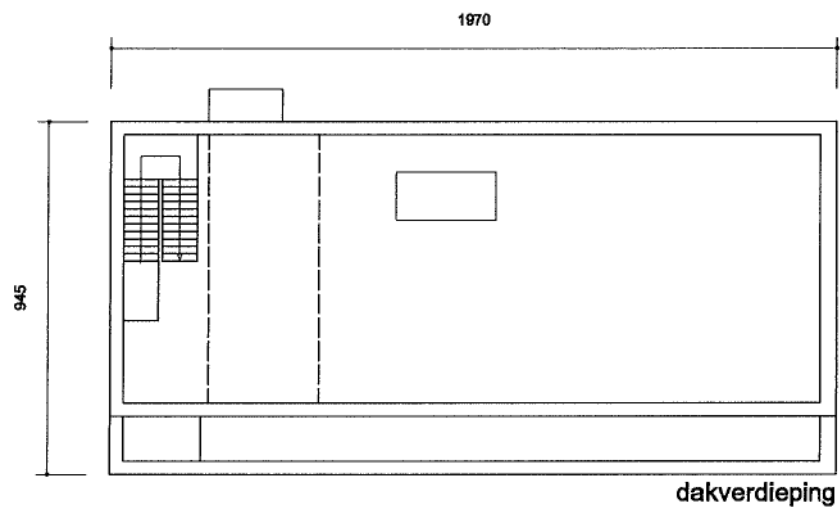
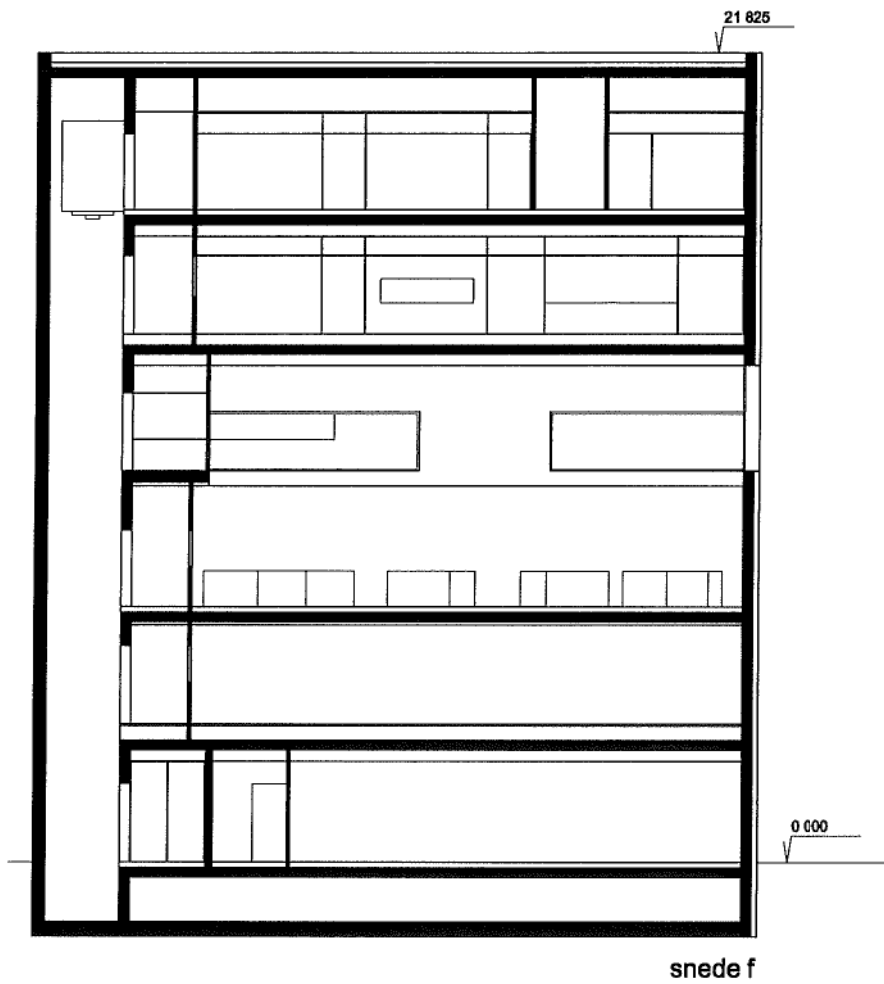




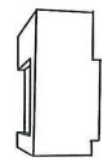
Handwritten red mark resembling a stylized 'X' or signature.



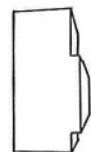




1



Handwritten red mark resembling a stylized 'X' or signature.

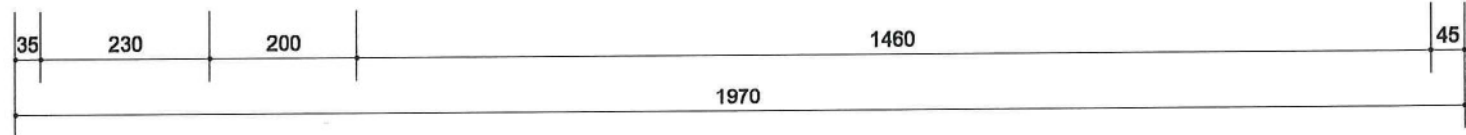
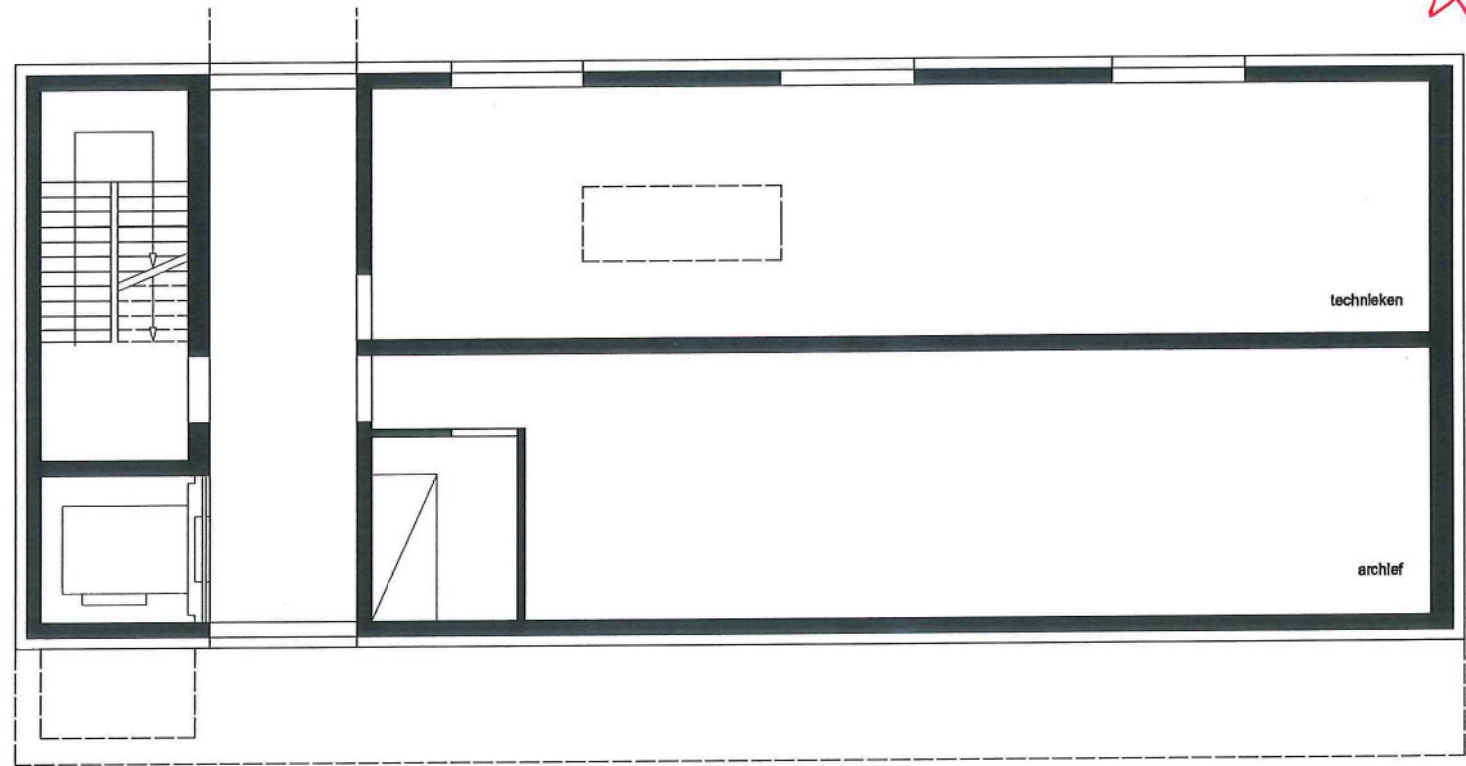
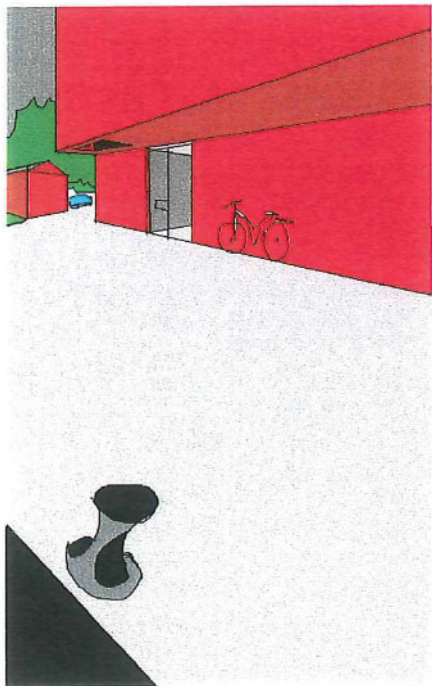
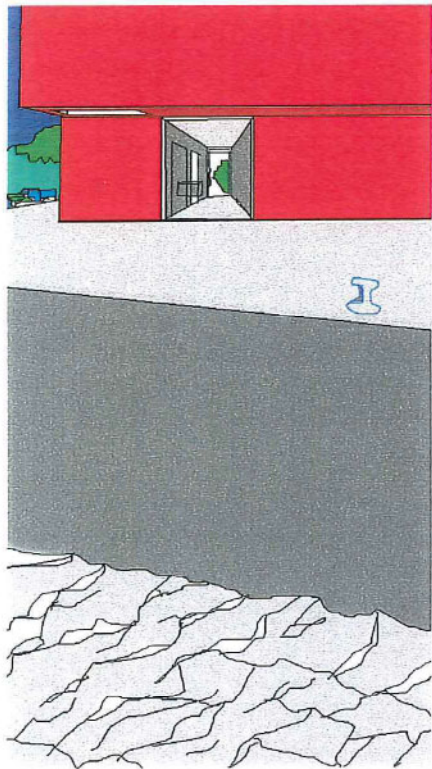




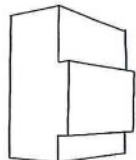
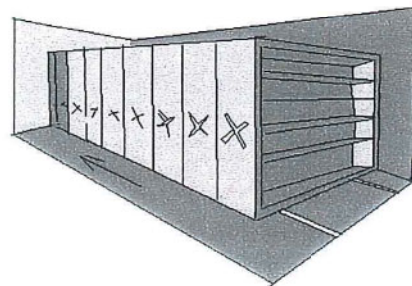
plannen 1/100

ssa/a11 - project: centrale bedieningspost kanaal leuven-dijle kampenhout-sas



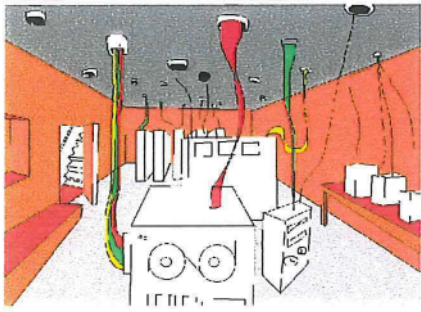
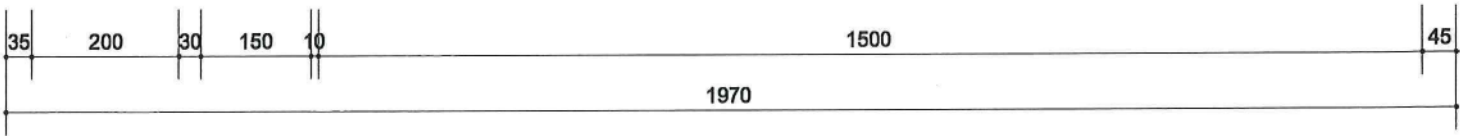
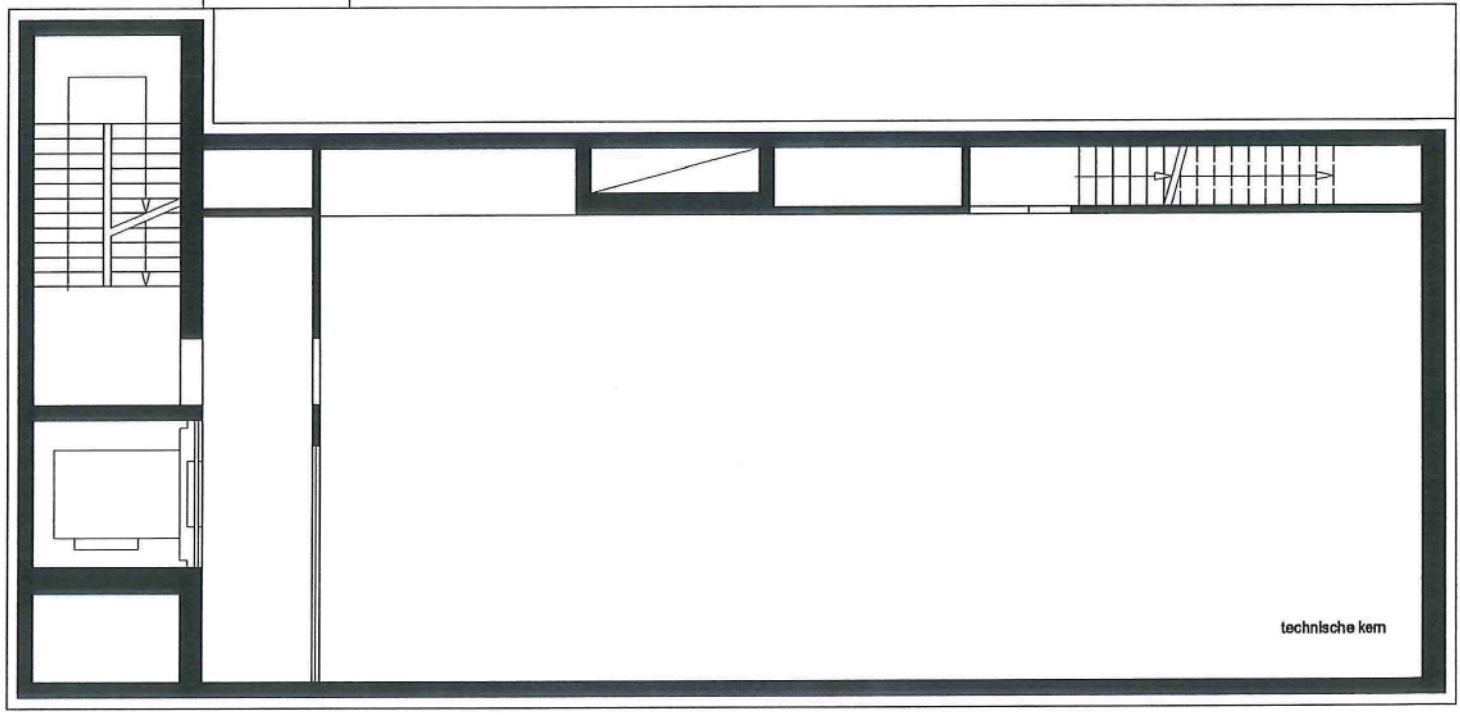
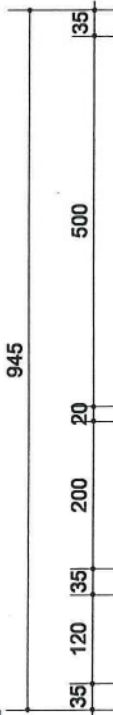


gelijkvloers



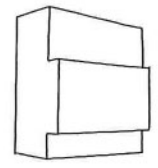
ssa/a11 - project: centrale bedieningspost kanaal leuven-dijle kampenhout-sas

α

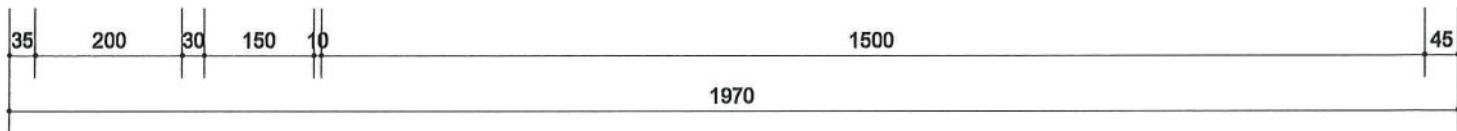
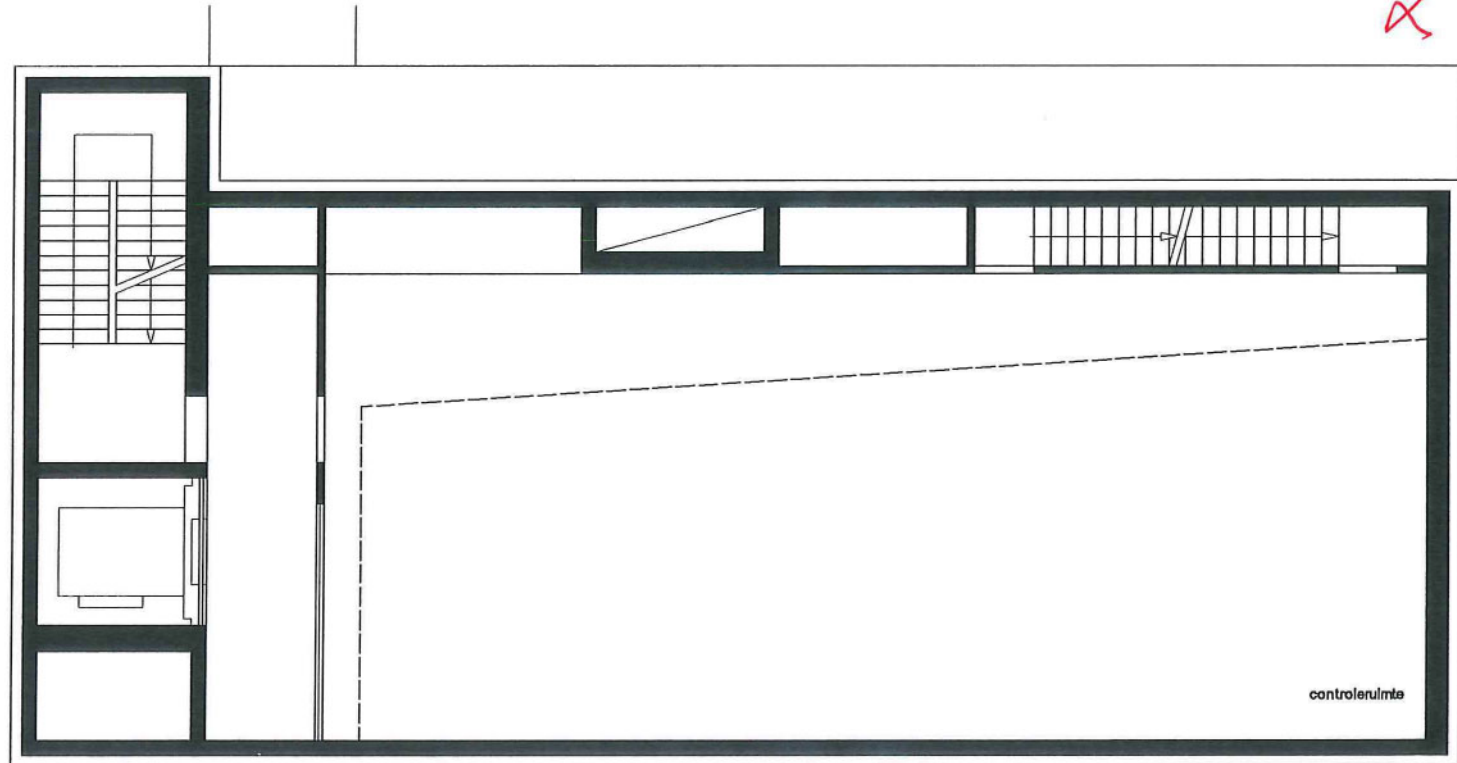
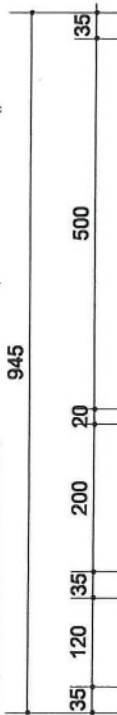
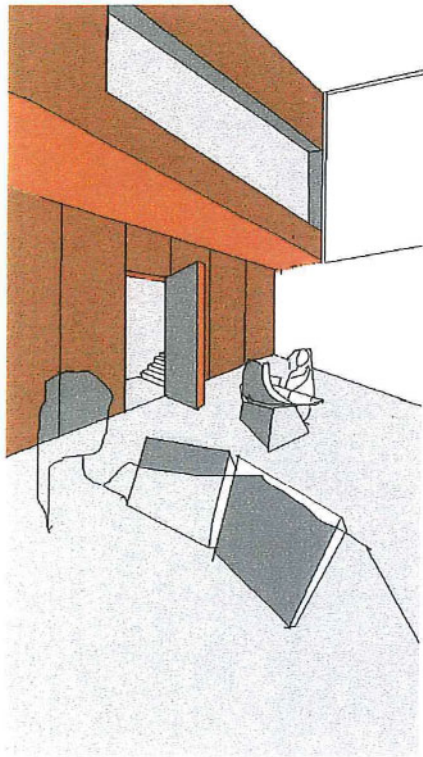


1e verdieping

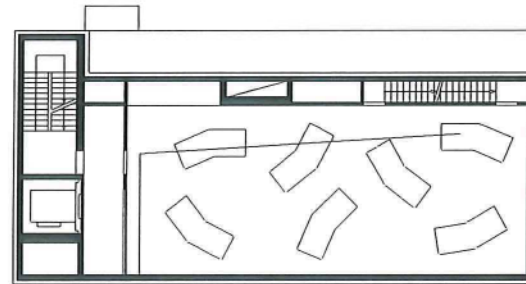
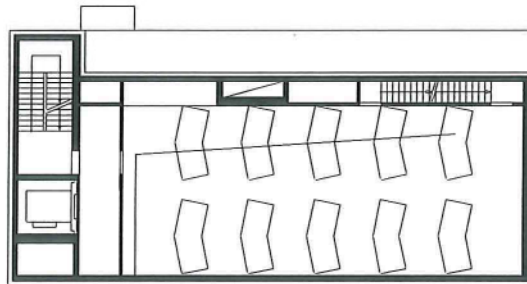
ssa/a11 - project: centrale bedieningspost kanaal leuven-dijle kampenhout-sas



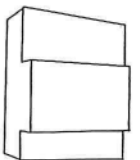
✓

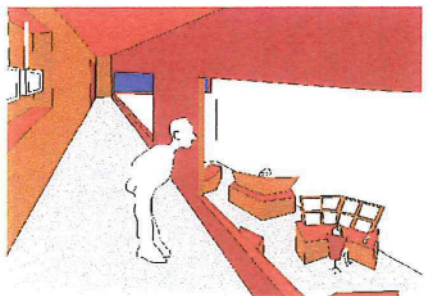
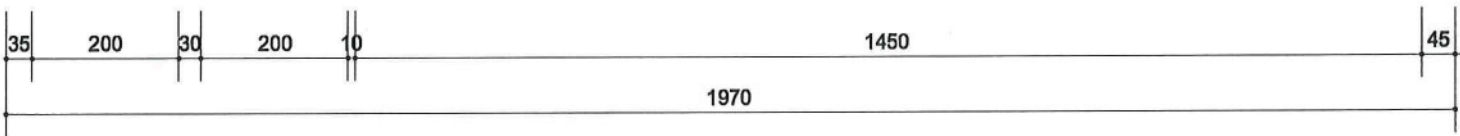
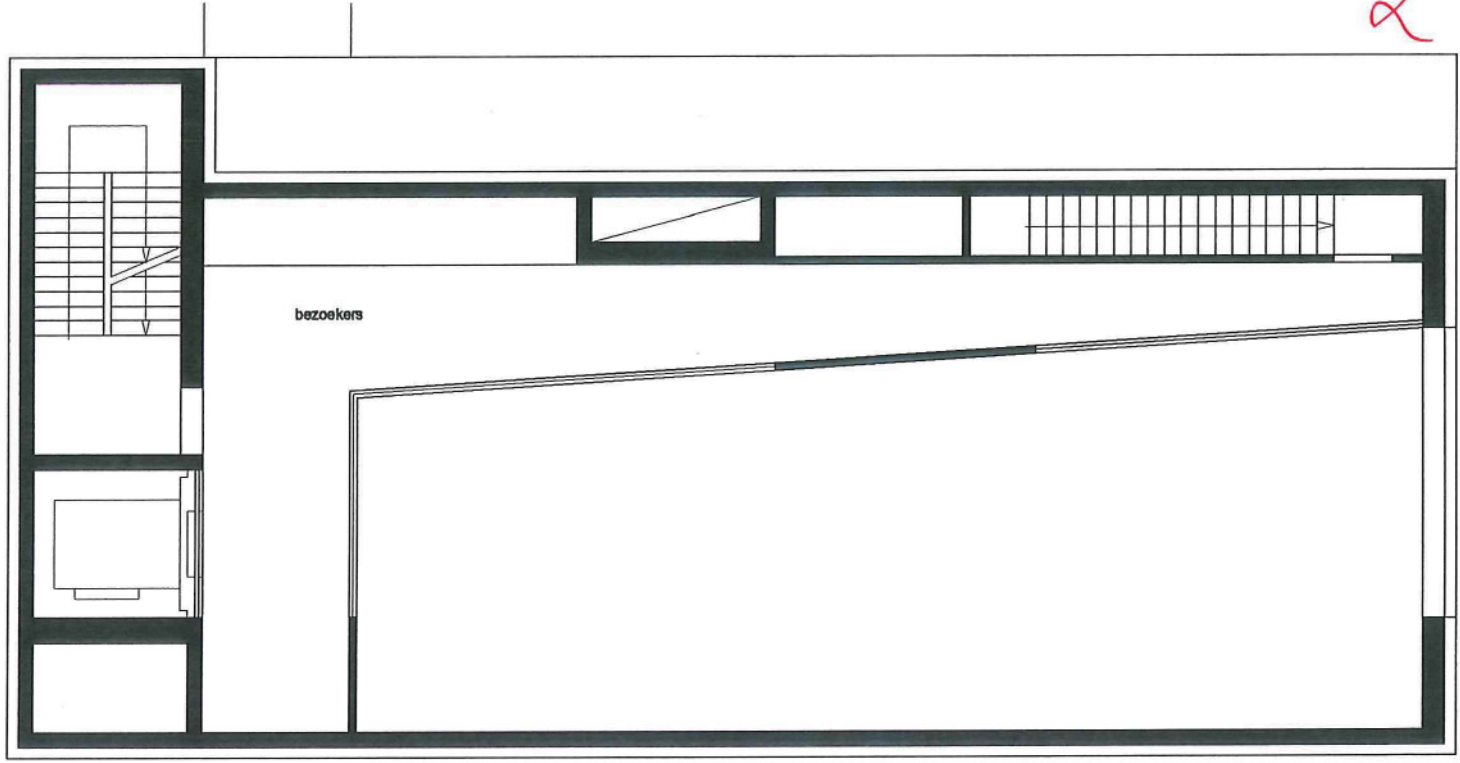
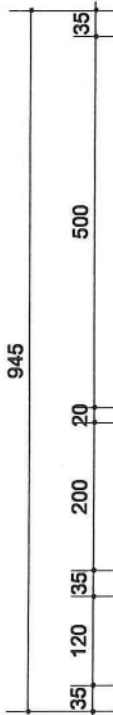


2e verdieping

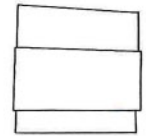


mogelijke opstellingen duo-werkplaatsen

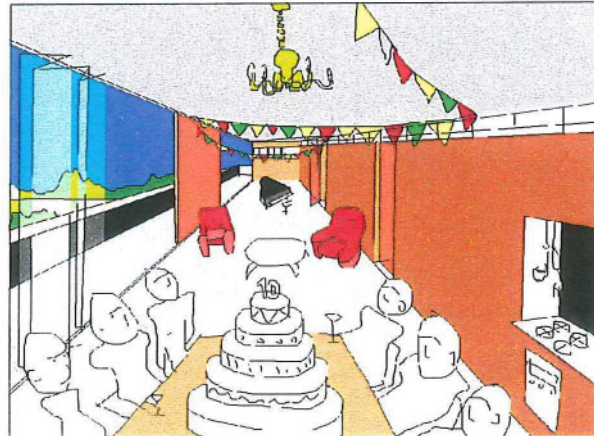
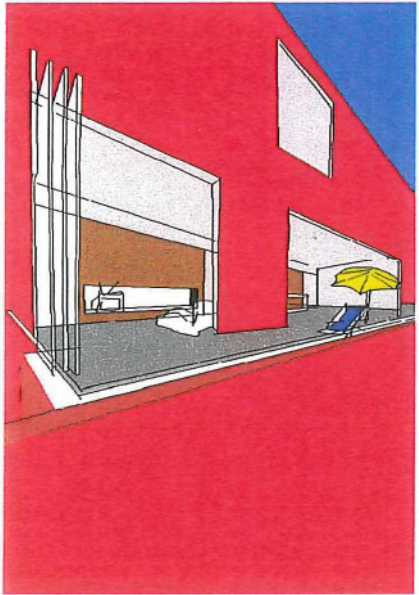
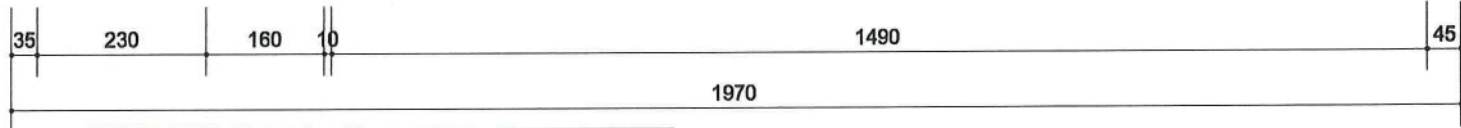
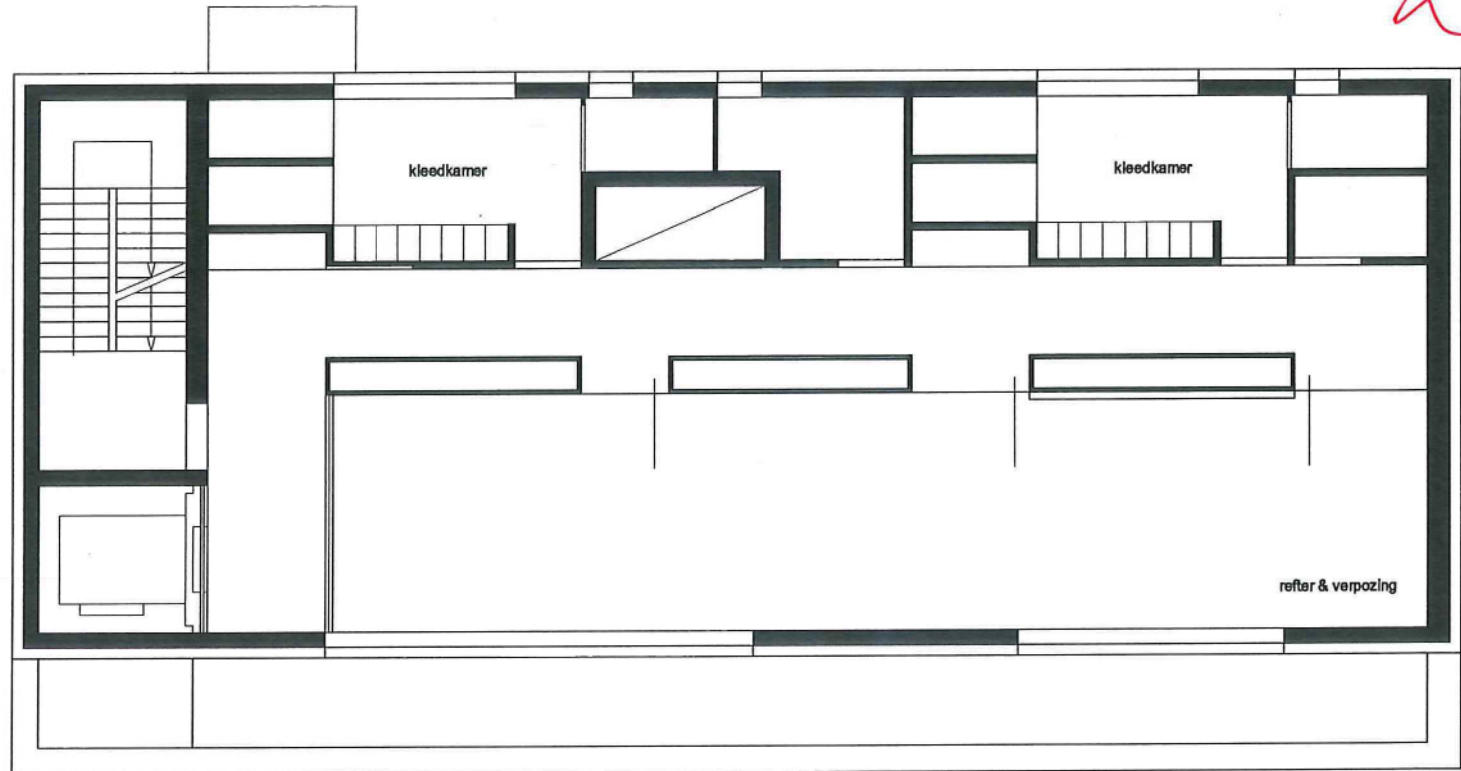
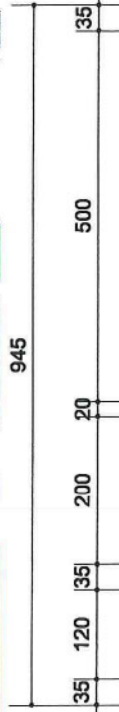
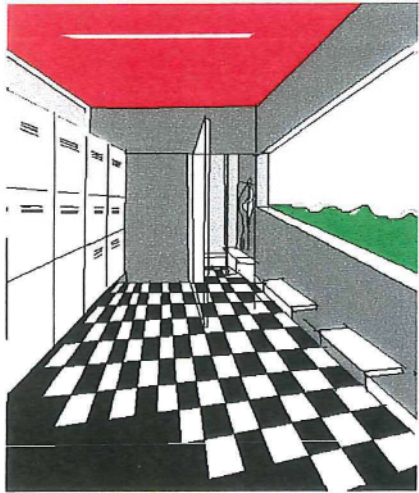




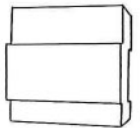
3e verdieping



α

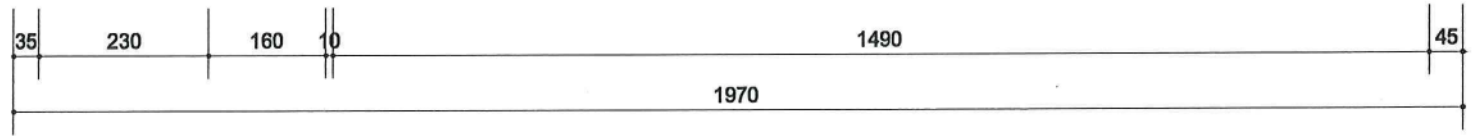
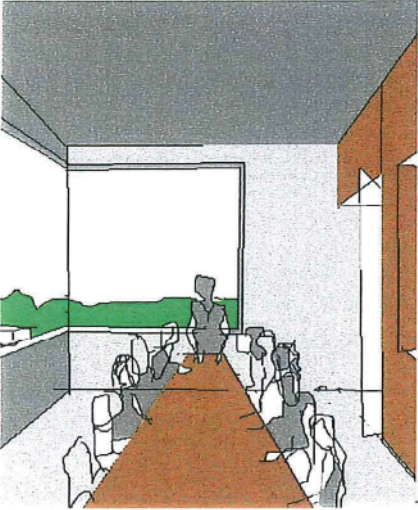
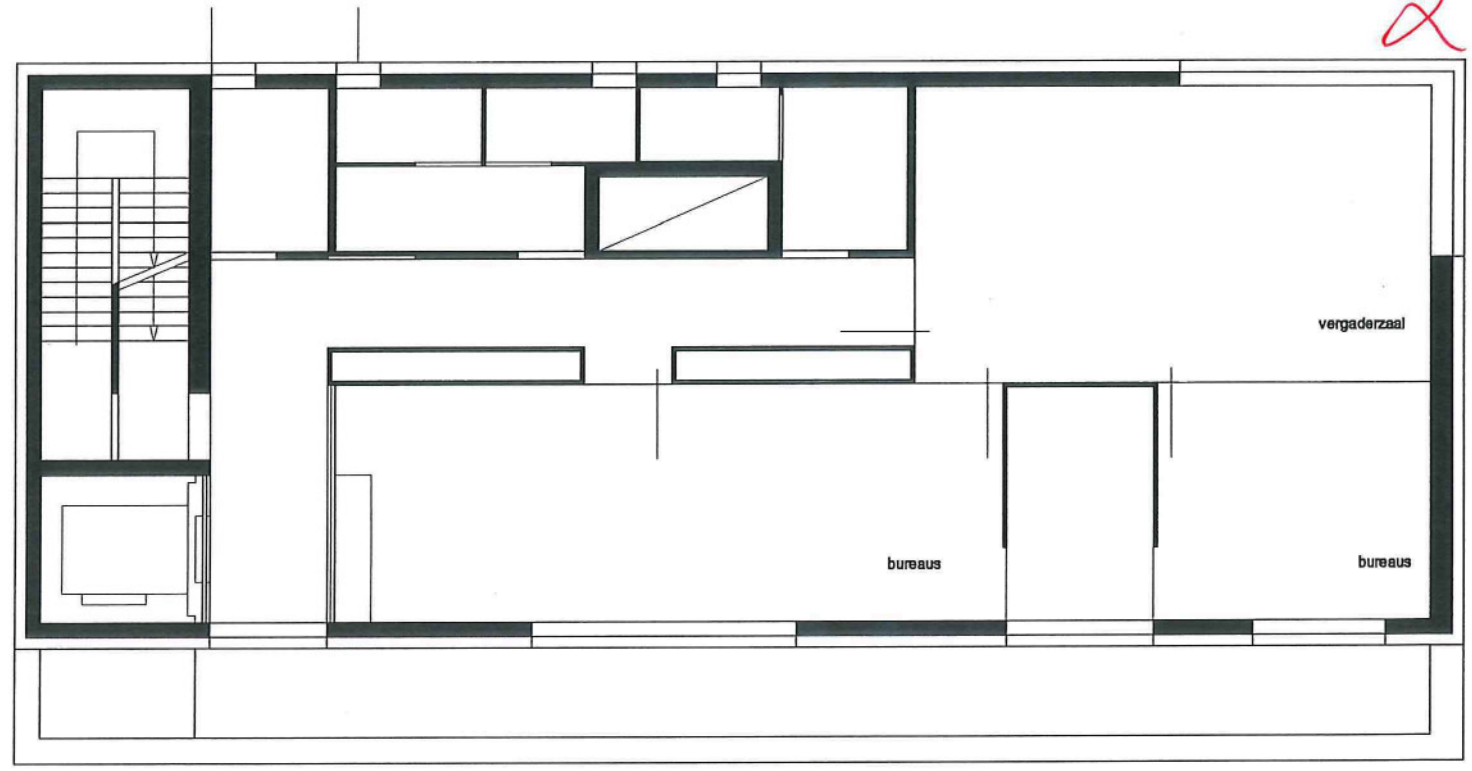
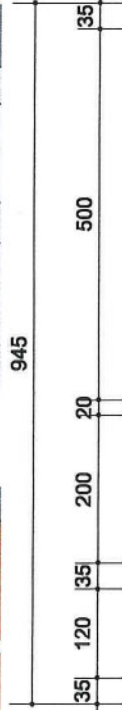
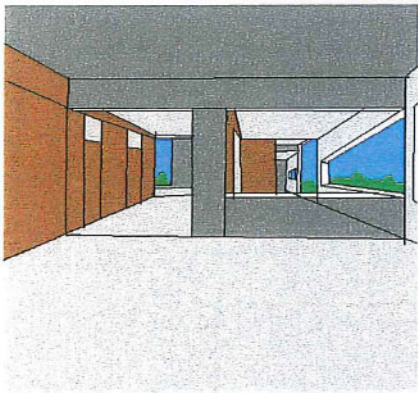


4e verdieping

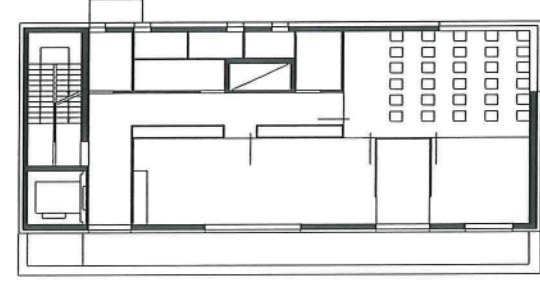
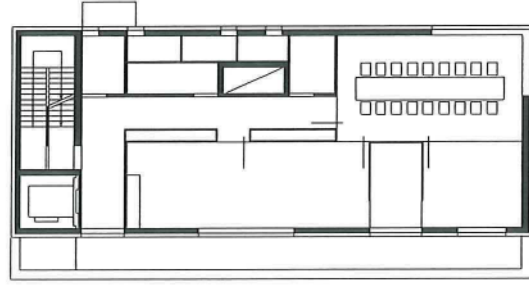


ssa/a11 - project: centrale bedieningspost kanaal leuven-dijle kampenhout-sas

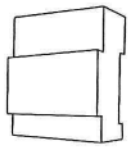
α



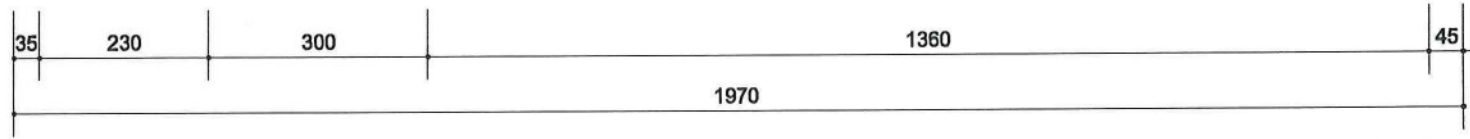
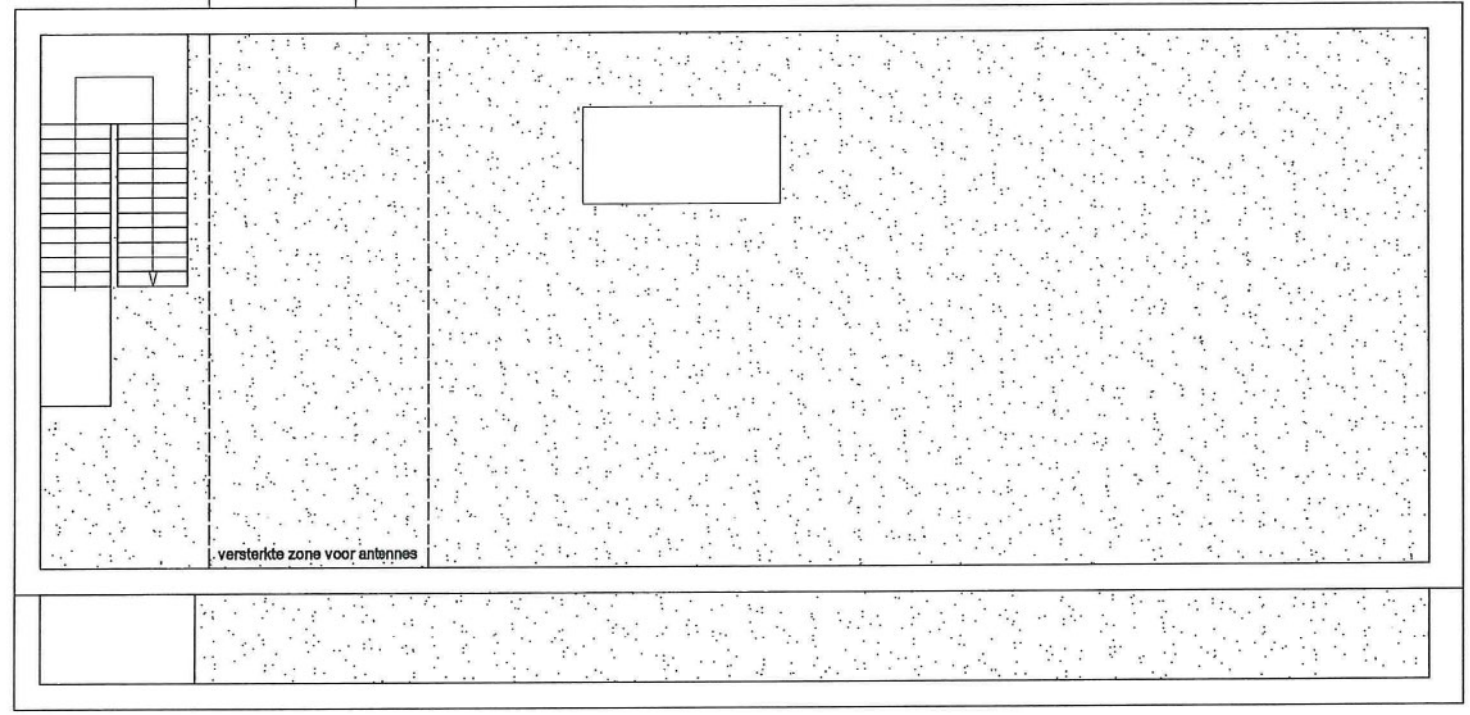
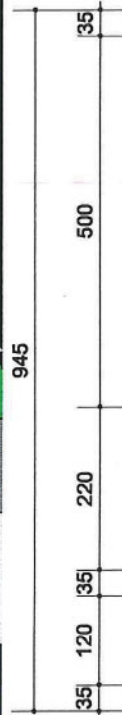
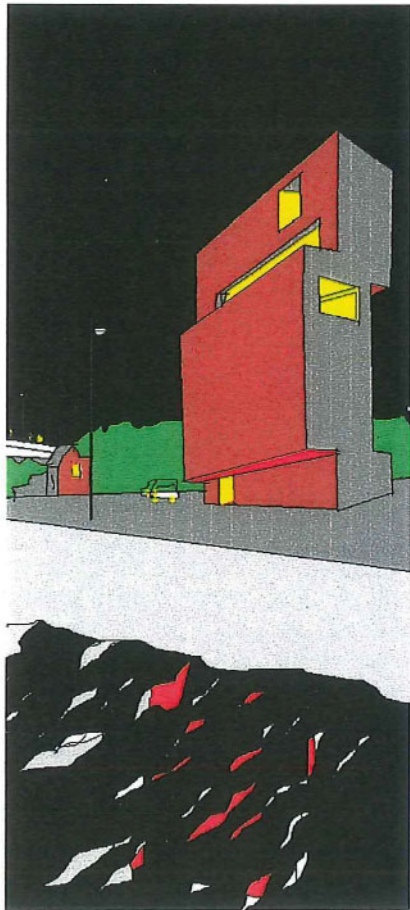
5e verdieping



mogelijke opstellingen in vergaderzaal



α



dakverdieping

