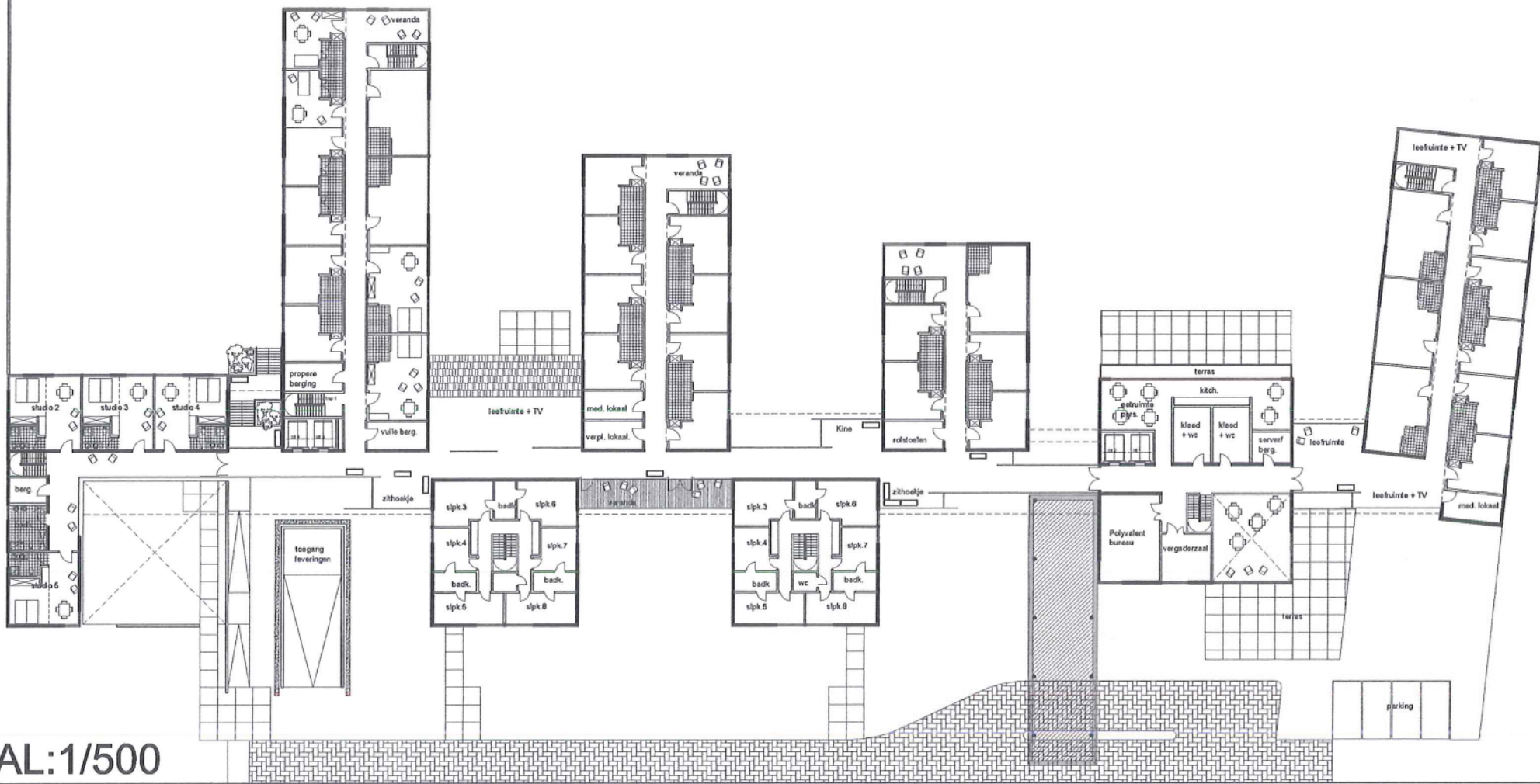




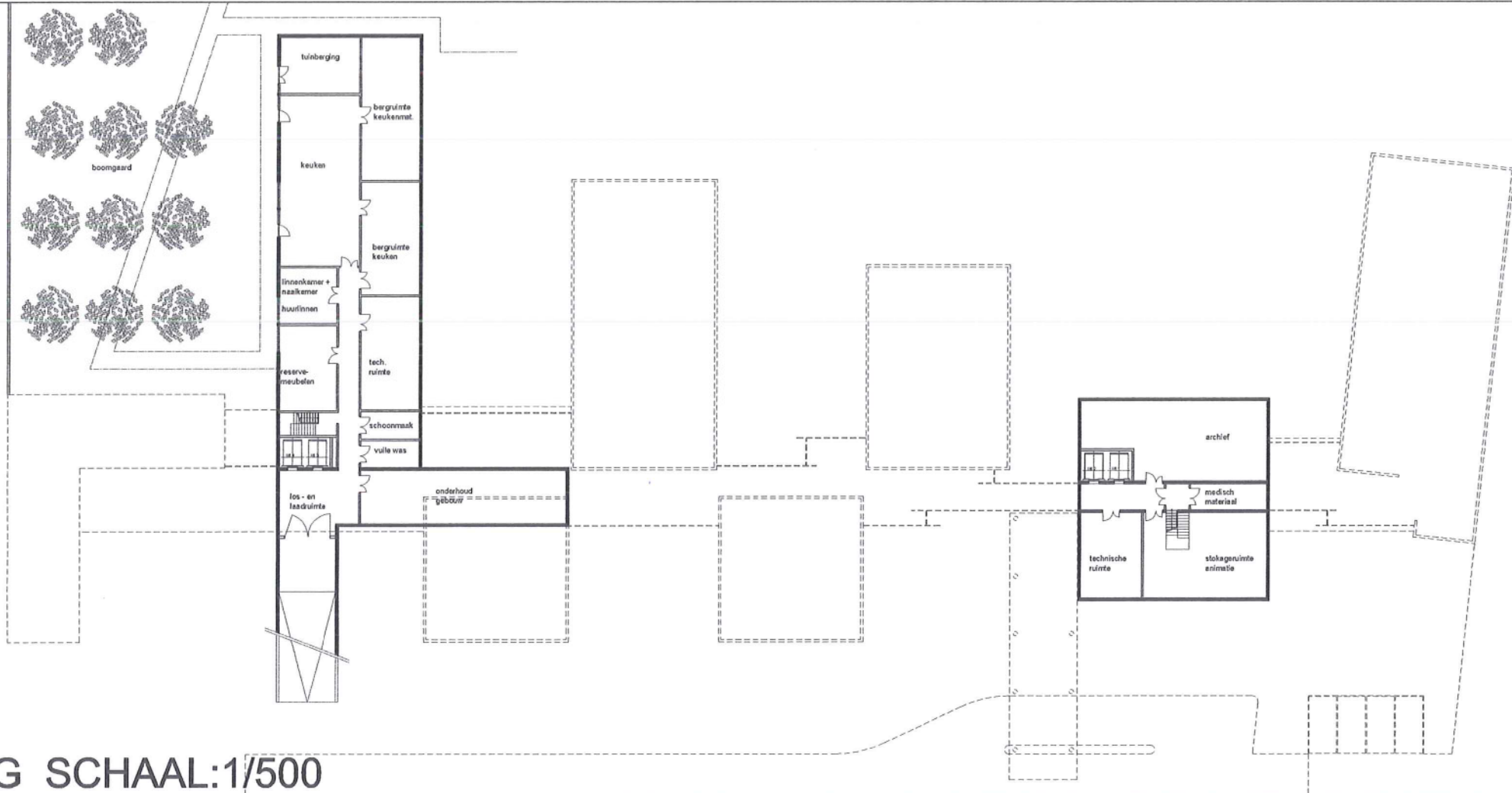
HOME LEVEN



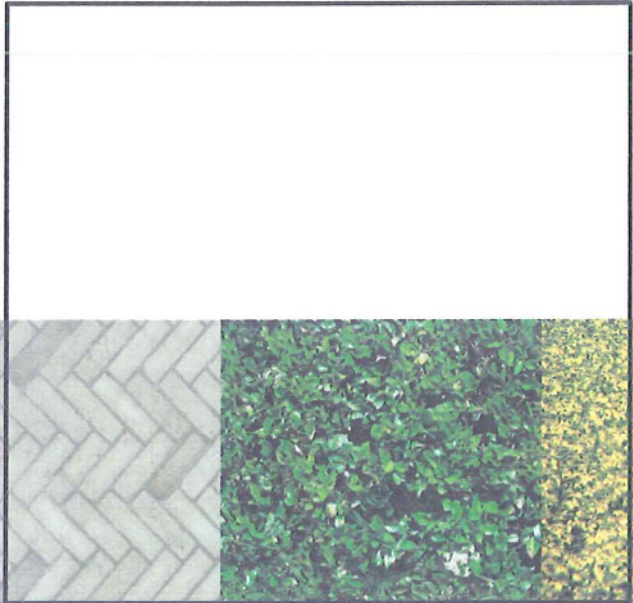
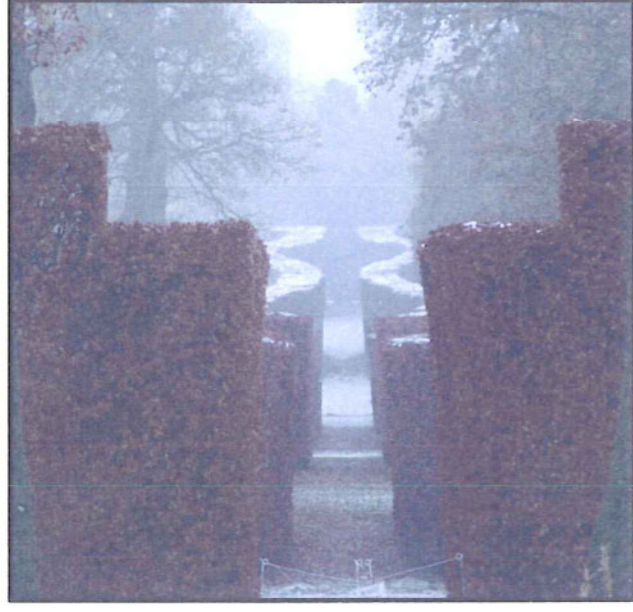
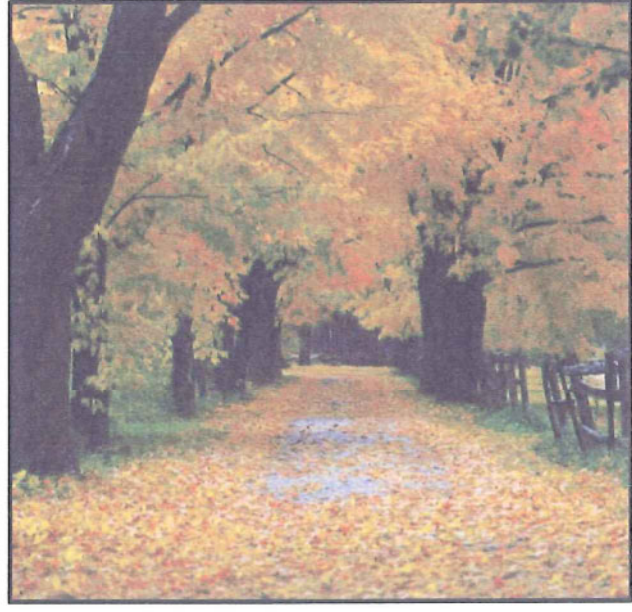
GELIJKVLOERS SCHAAL: 1/500



VERDIEPING SCHAAL:1/500



KELDERVERDIEPING SCHAAL:1/500







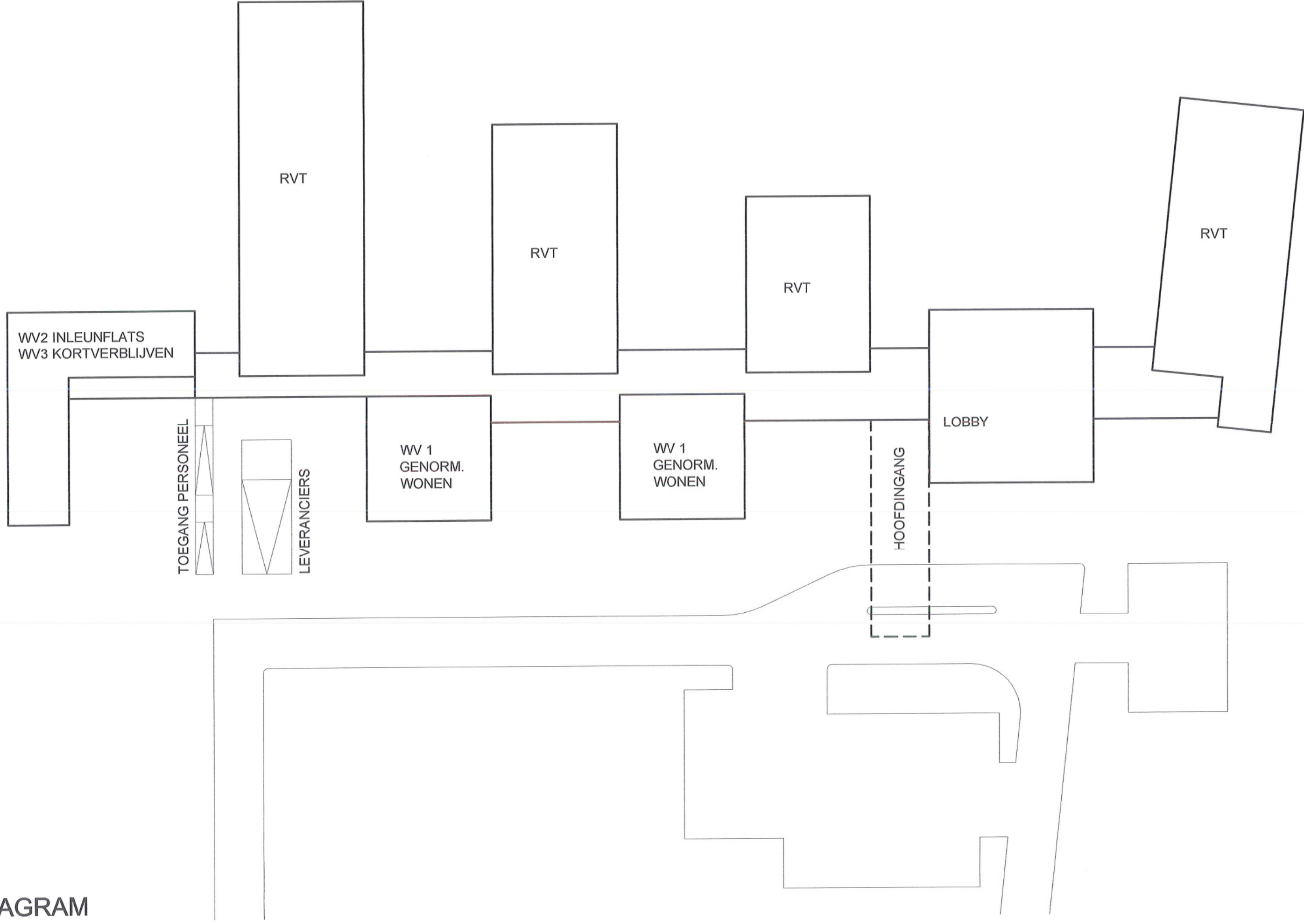
PLAN TUINAANLEG



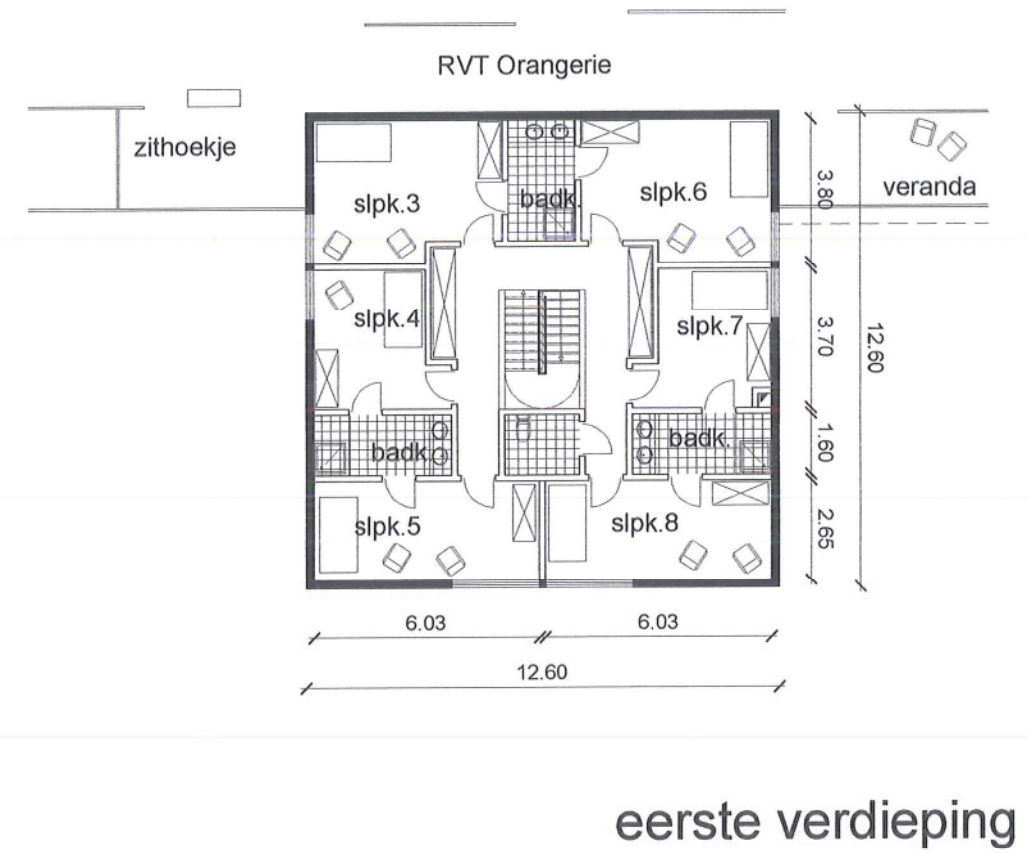
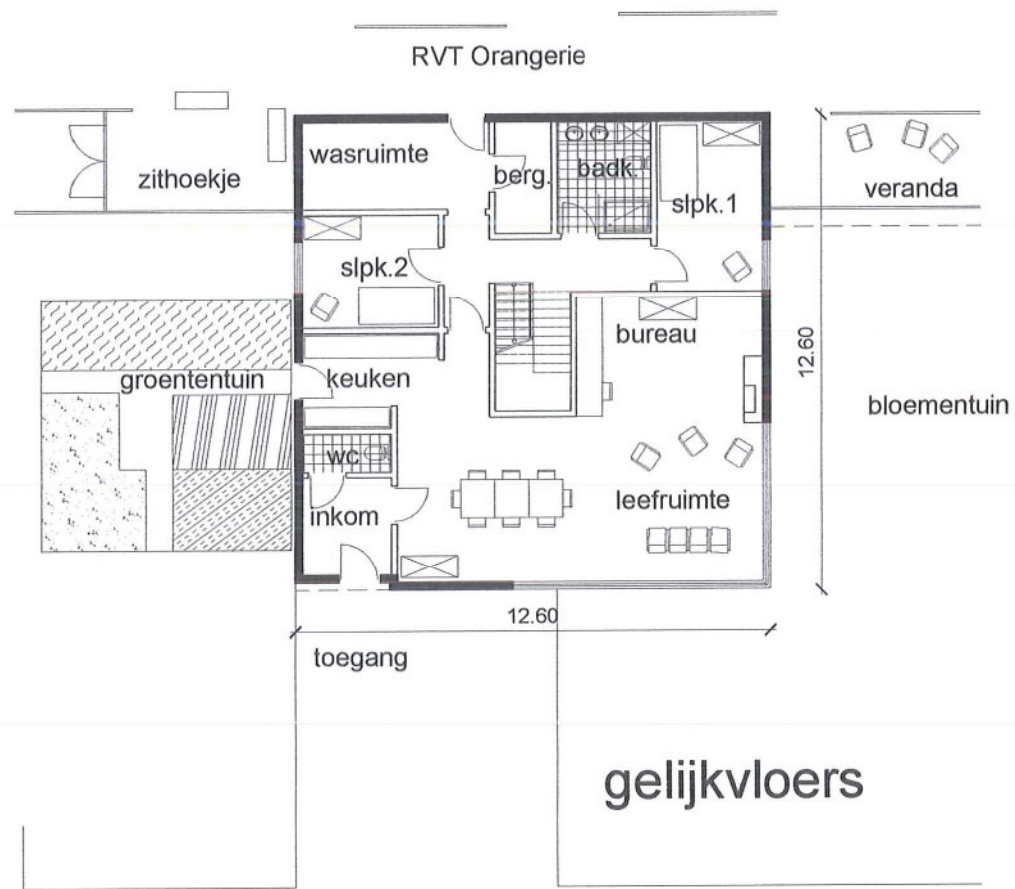


PERSPECTIEF LOBBY-FORMEEL TUIN

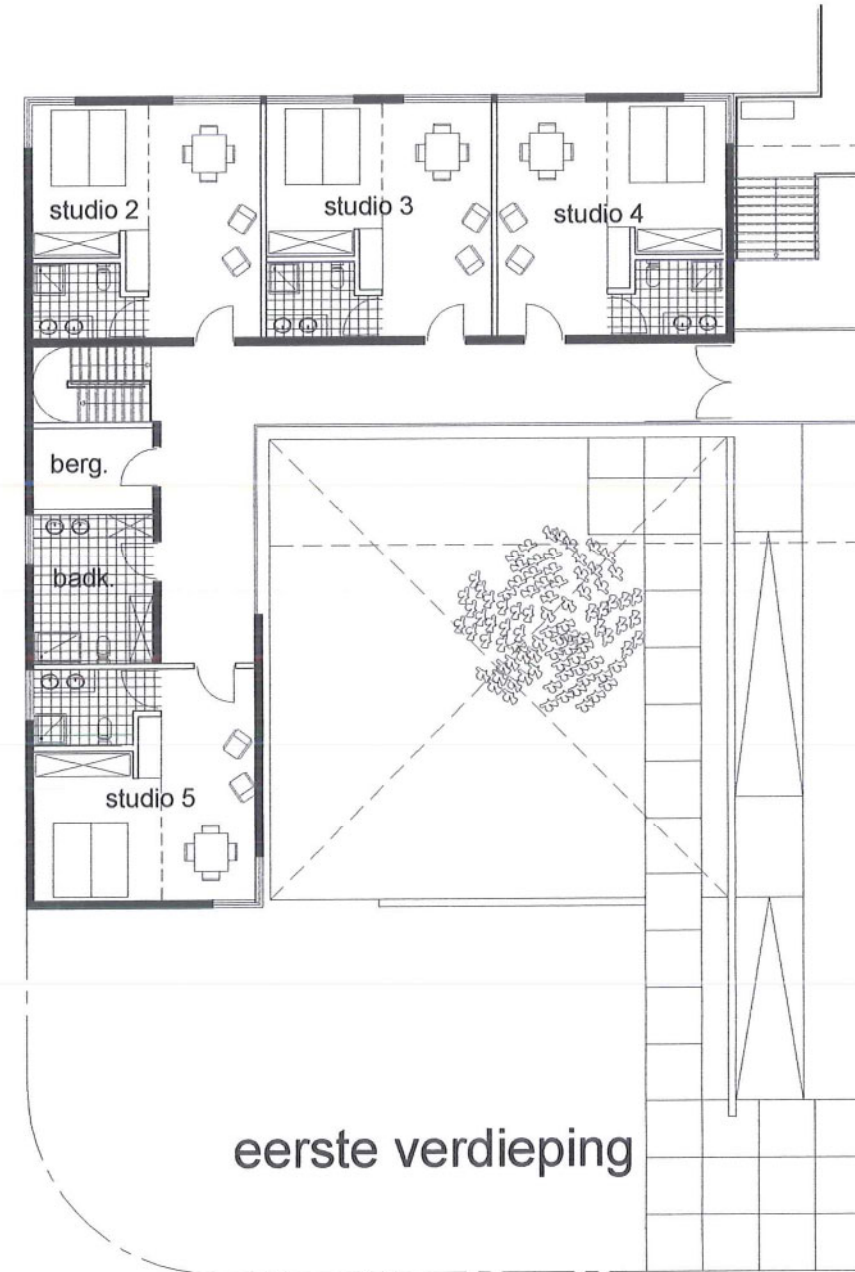
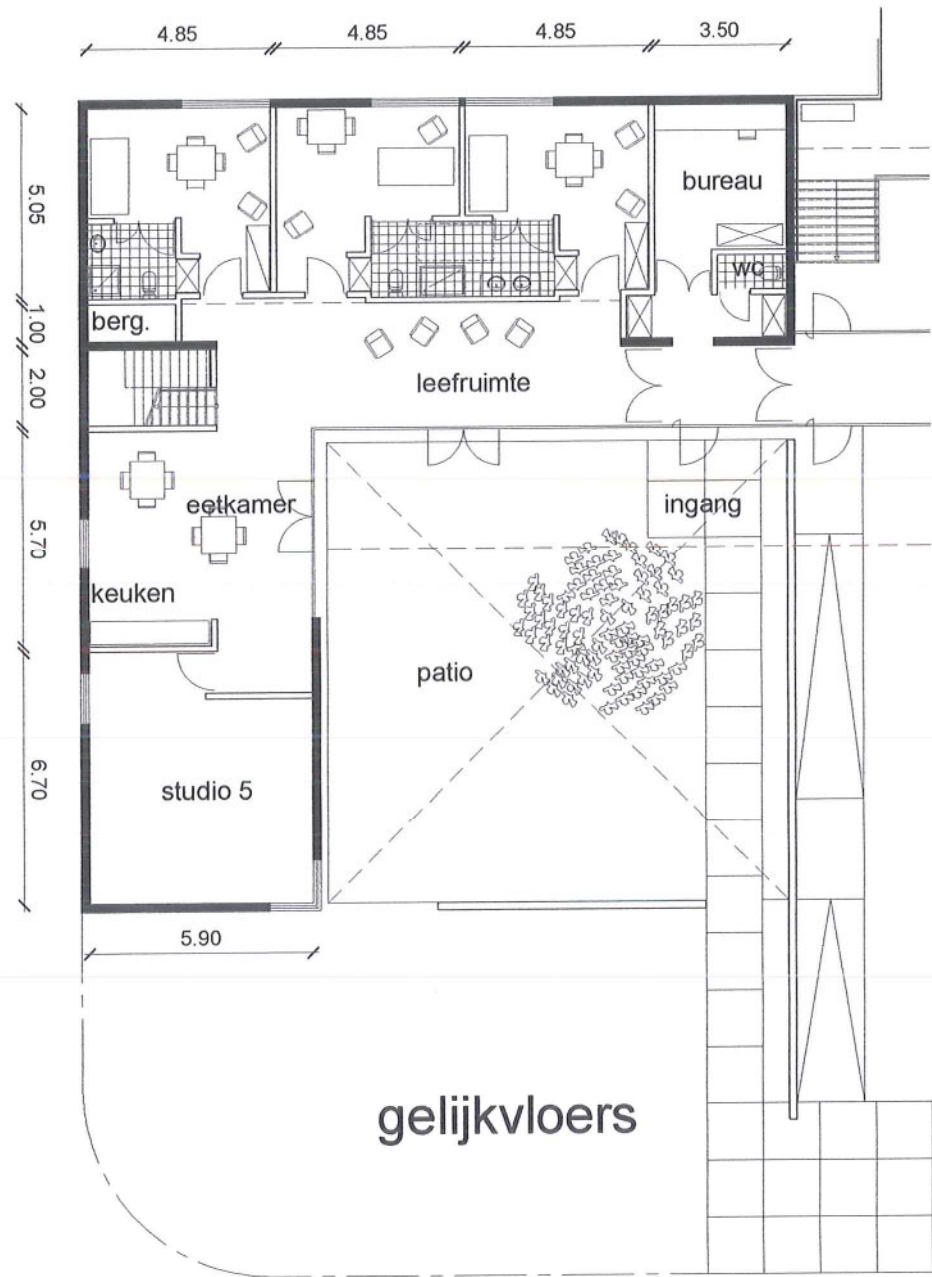
HOME VIJVEN'S GIGANTES ZENGHELIS ARCHITECTS



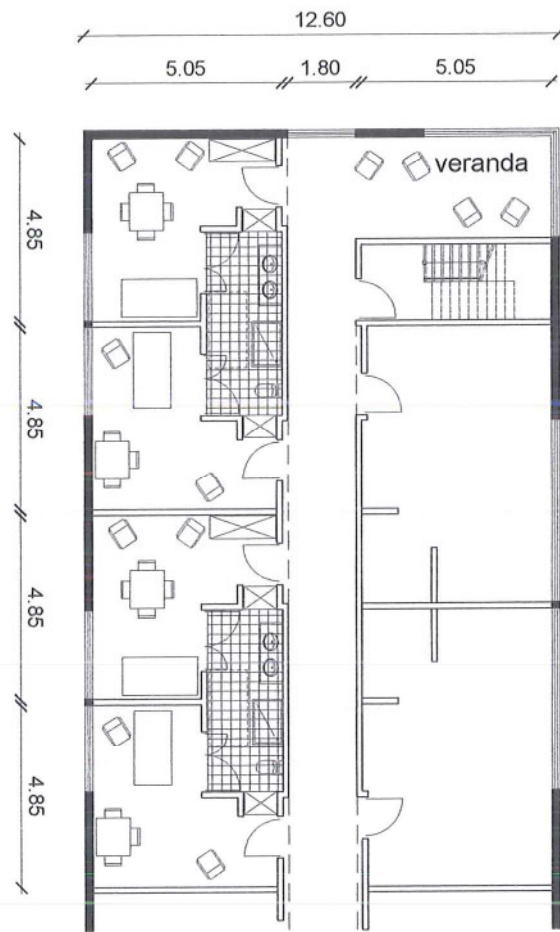
WV1 Genormaliseerd wonen (16 eenheden)



WV2 Inleunflats ( 5 eenheden)  
WV3 Kortverblijven ( 3 eenheden)

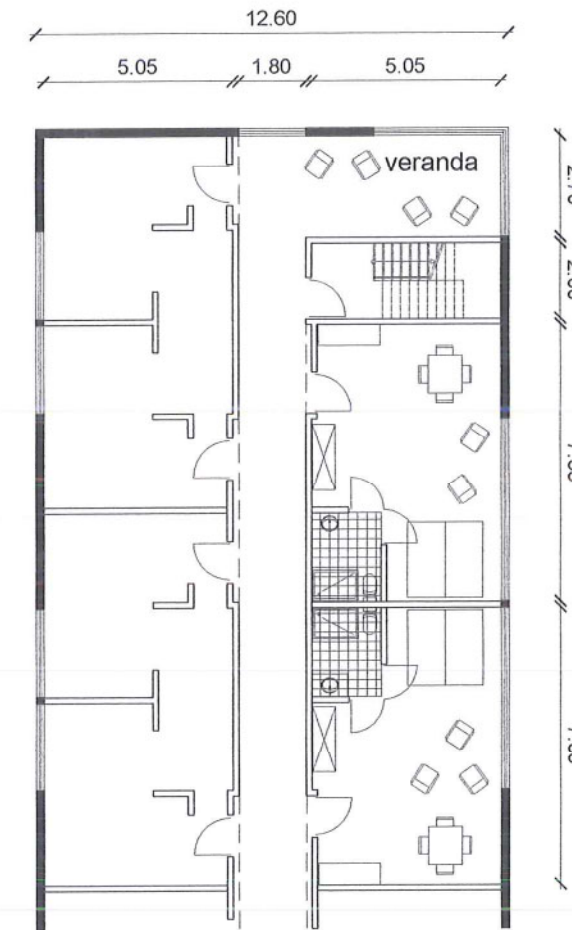


WV4 RVT-kamers basis ( 48 eenheden)



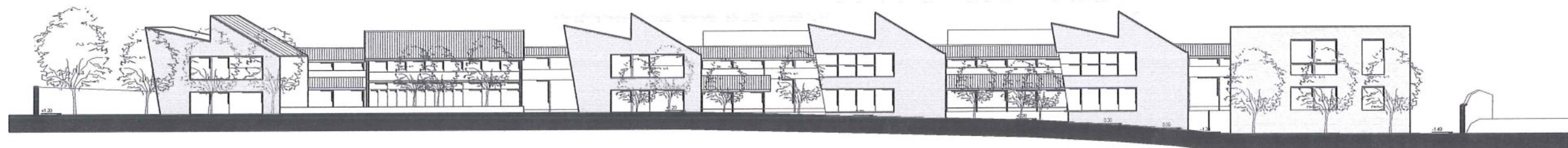
gelijkvloers  
eerste verdieping

WV5 RVT-kamers confort ( 16 eenheden)

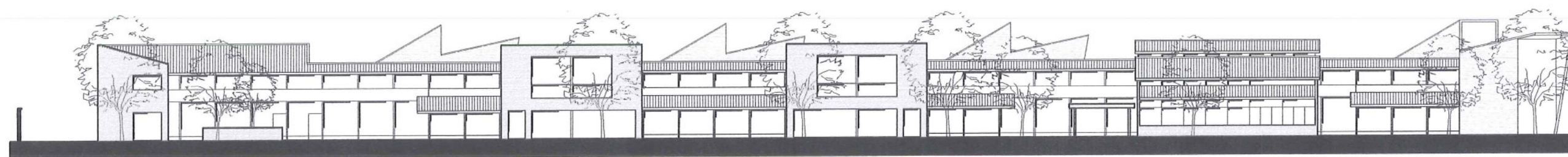


gelijkvloers  
eerste verdieping



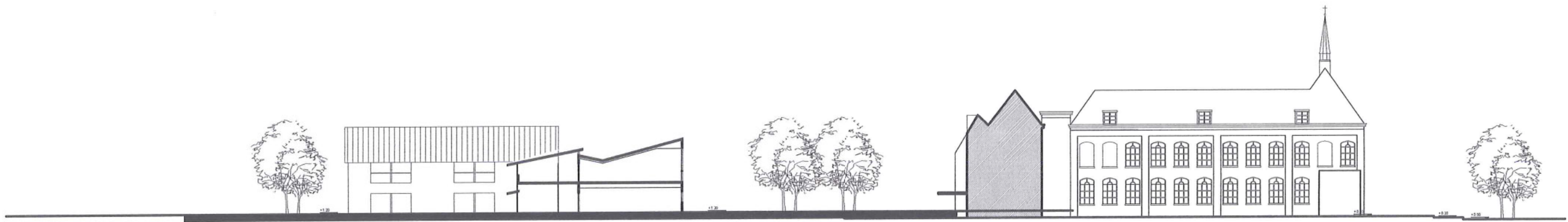


OOSTGEVEL

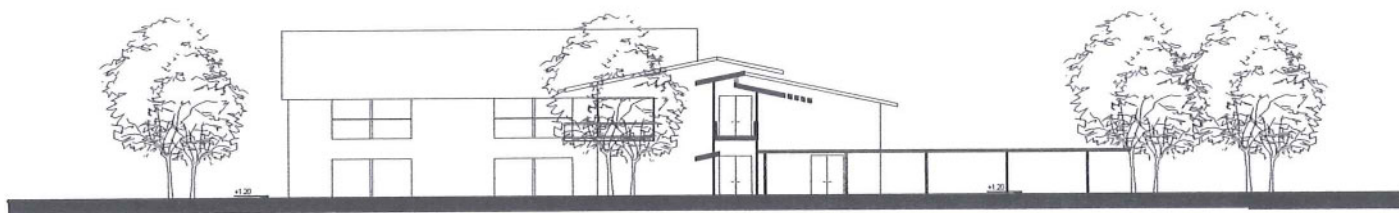


WESTGEVEL

GEVELS SCHAAL:1/500



DOORSNEDE 1

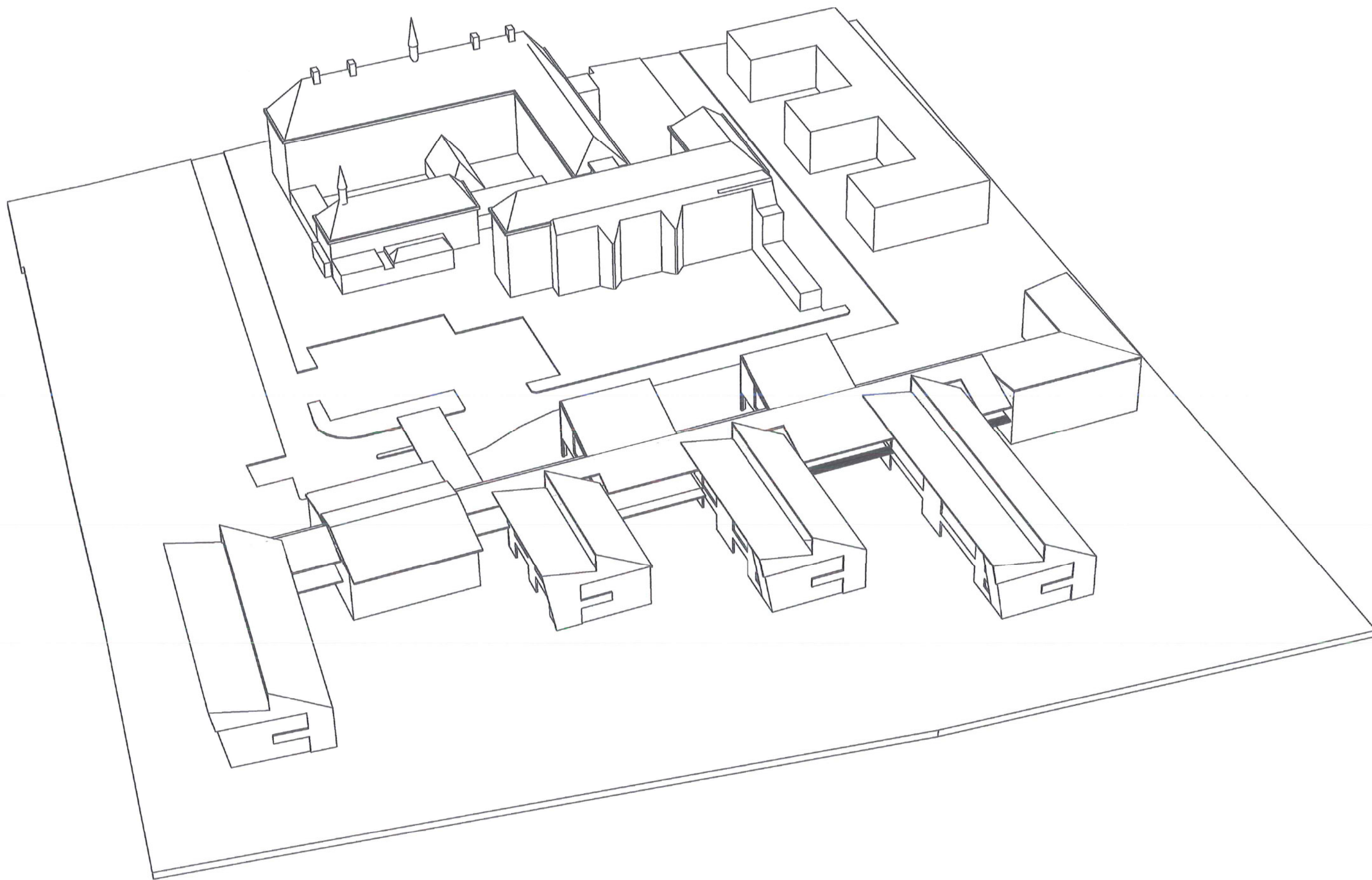


DOORSNEDE 2



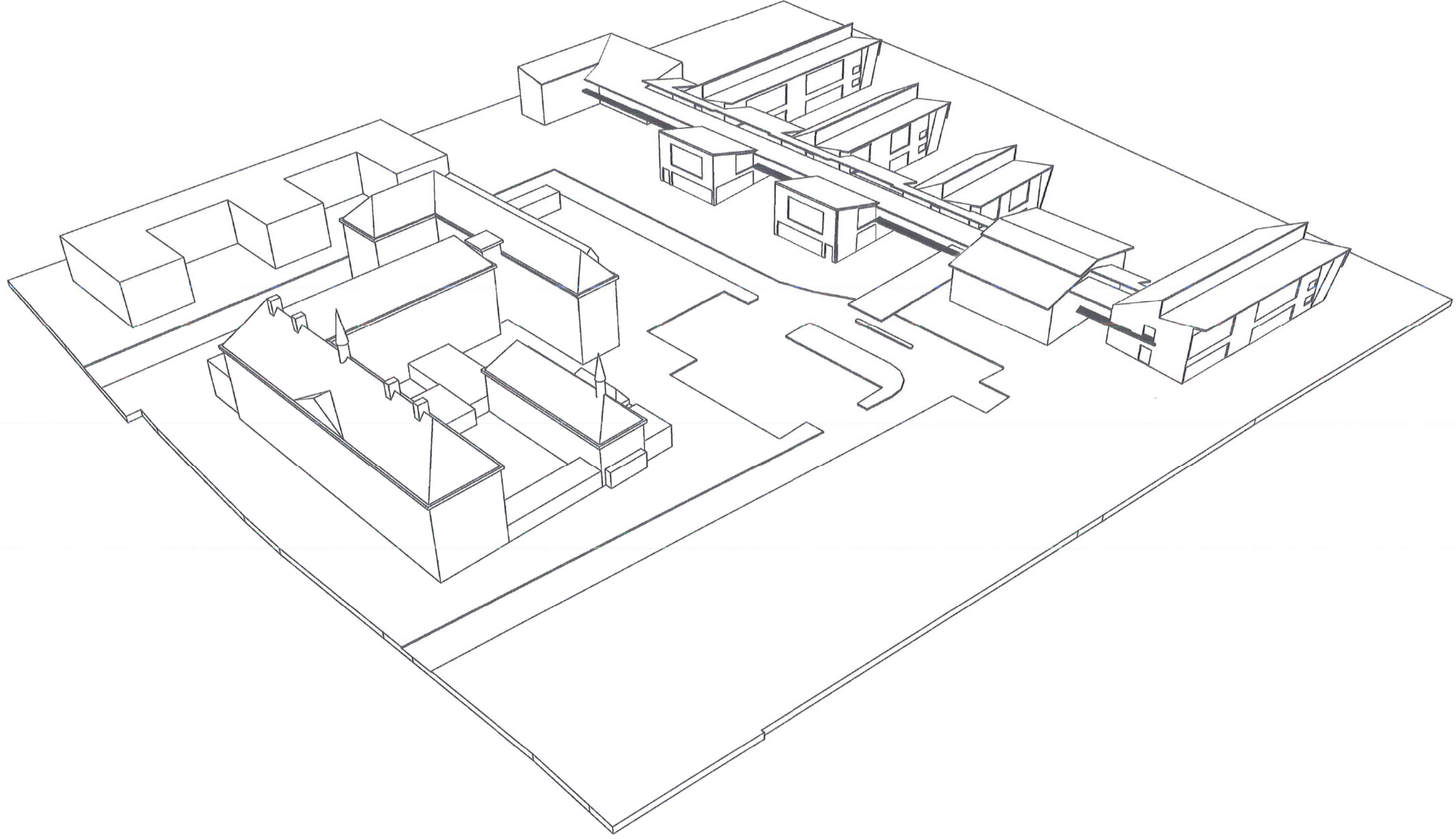
DOORSNEDE 3

DOORSNEDES SCHAAL: 1/500



VOGELPERSPECTIEF





VOGELPERSPECTIEF

## Home Vijvens

### Integration of the Site/ Integration with the Village

For us, the first challenge was a natural integration of the school and Home Vijvens on the site, and the second was a better integration of the site into the village. By offering more to the village, we felt we would be offering more to the Home residents.

This was achieved by the re-orientation of the site around a new square where all the elements of the site (old and new) meet: School, Home, Church, Park, Shop. The square is the heart of the site and the little church is the focus of the square, serving both school and Home.

Secondly, instead of a driveway, a new (slow-speed) stone road is built around the school: a real street on the village map.

Third, two new elements are added to the site: a small park with a sweet shop/summer café. This is a village park, well landscaped, with benches, water fountain and infants' playground; it can also be used as a play/sports ground (with its volleyball and half basketball court) for the school or neighbourhood. A sweet shop/summer café serving the park is a natural attraction point for school children, Home residents and visiting villagers.... (And a good business opportunity for a local person!)

### Architectural Concept

Rather than a single large building - an 'institution' - Home Vijvens is conceived as a village of different houses, each house with a different identity. Each has a distinctive size, brick colour, brick pattern, windows and doorways. On a site already dominated by a large imposing building, the Home Vijvens offers a friendly, domestic scale.

All the houses are connected by the Orangerie. As a garden building, an Orangerie creates a relaxed atmosphere and dispels the cooped-up, stuffy feeling so common to large institutions; it brings the residents close to nature and encourages them to go outdoors.

While the houses are solid and brick, the Orangerie is lightweight and faced in wood, with a rustic indoor/outdoor character. The Orangerie creates a rhythm of solid/transparent where the solid houses are punctuated by changing views to both sides. The first floor offers distant views from underneath the wooden roof structure. The ground level opens directly to verandas, terraces and gardens. Pergolas, eaves, lamellen and veranda roofs modulate direct sunlight.

The Orangerie is like an indoor 'village street'. It is the vital heart of Home Vijvens, since all the activities are located in it and all the houses attach to it: the RVT houses, Patio and Normaliseerd houses. The entrance lobby is here (with bar, shop, cafeteria, lounge) and Living Rooms, Kine and cosy corners. The social activities of the home are concentrated in the Orangerie to promote social interaction, yet there are no obligations - like a real street it is also natural to walk alone:

## User Concept

The residential use of the Home Vijvens divides along the Orangerie.

The houses where residents have an independent life (Patio, Normaliseerd) are placed in front of the Orangerie, on the street side, with separate entrances, street numbers and post boxes.

The RVT houses are located behind the Orangerie, oriented to the garden, terraces and view.

This does not mean that RVT residents are isolated from the street, nor independent residents from the garden. The Orangerie is a doorway to both sides, for all residents. (The garden can also be accessed by the independent residents from the sides.)

RVT residents have cosy corners and verandahs on the front façade to look over the street. Patio and Normaliseerd residents can use the Orangerie as they wish - for example, to meet friends, visit the lobby in bad weather.....

## Residences: the Houses

### RVT :

There are 4 RVT houses of different lengths and size, the largest being 6 rooms long. The internal plan is simple: a central corridor that is daylit at both ends provides access to the rooms. Each corridor/house ends in a glassed-in veranda projected toward the view. This verandah can be opened in summer. The fire escape stairs in each house can also be used to communicate between the floors.

Entrances to the rooms are set in alcoves. Each alcove should be well lit, with a different paint colour and a Memory Box to aid recognition.

We have shown the normal and comfort rooms mixed together, but they can be separated if this is preferred.

### Patio:

The Patio house has 4 flats on the upper floor, and one flat and 3 visitor RVT rooms on the ground floor. Access to RVT is provided on both floors.

The Patio house is built as an L-shape around a garden patio. The living/dining room is also L-shaped, opening on to the patio.

### Normaliseerd:

The normaliseerd houses have a connection to the RVT at ground floor only.

## Possibility for an Alzheimer's Wing

The south RVT house can be used as a normal wing or a special needs wing, such as for Alzheimer's patients. In that case, the formal garden outside the Entry building's dining area /bar can become an Alzheimer's garden by closing and raising the hedge and redirecting the garden path.

## Administration and Staff

The Administration is on the first floor of the entry building, with polyvalent office, meeting rooms, changing areas and staff canteen. This is linked directly by lift and stair to the reception and administration office on the ground floor and medical lokaal and archive in the basement.

Nursing stations and staff w.c. are located in the middle of the Orangerie on both floors.

A secondary staff entrance is provided next to the delivery entrance.

Parking for staff and doctors is located next to the entry building.

## Basements

The building has 2 basements, north and south. The technieks are split, with one in each basement for heating, hot water, electrics etc.

The South basement is located under the entry building and is fully below ground. A storage cellar, the animation materials, archive and main medical lokaal are located here, connected directly by lift and stair to the administration.

The North basement takes advantage of the -2,8m change in site level, so that on the north side it is on level with the ground. This is a working basement with the delivery entrance, laundry and rubbish removal, Onderhoud, and kitchen. The kitchen has full daylight and direct access to kitchen garden, orchard and hen house; and lifts for food distribution. The furniture, linen, kitchen and garden storage areas are also here.

## The Garden

The garden is as important as the building for the residents comfort, enjoyment and health. It offers the view of the changing seasons, wildlife and birdsong, the opportunity to garden in raised boxes, to take care of domesticated animals, and both close and distant views.

The garden as divided in two parts:

Close to the Orangerie:

To aid orientation and offer variety, the outdoor spaces next to the Orangerie are conceived as distinct gardens, each designed to be immediately recognisable (in all seasons) by its size, special feature (pergola, bird houses, fish pond etc.), planting (azalea /bamboo / fruit trees / espalier / alpine etc.). At the north end, where the land is lower, a wide staircase with planting, landings and benches leads to the apple orchard.

At the entry lobby, the east terrace leads into a formal flower garden and the distant views.

The Bigger Garden:the

Is partly natural and partly cultivated.

On the north side it is cultivated, with an apple orchard next to the kitchen, hens, rabbit hutches and a kitchen garden. The eggs and produce can be used in the kitchens and residents can help to look after these.

Toward the east and south is meadow with long grasses, wild flowers, bird feeding stations, butterfly bushes and butterflies, a gazebo (as a destination and for a group activity), the fire engine way (stabilisée). All paths are at least two meters wide so that people can walk(or two wheelchairs pushed) together.

## Structure and Materials

As conceived, the Houses are concrete frame construction clad in brick, with doors and window frames in natural wood. Floors are continuous surfaces, even when they change material. Roofs are traditional tile. All windows are double-glazed and there are many opening windows, and at least one in each bedroom. The entry Canopy is a steel structure supporting a colourful sailcloth roof.

The structural floors of the Orangerie are fireproof concrete spans with a wooden floor finish. External walls are clad in wood, and a wood roof structure supports a metal roof.

All materials, colours and finishes would be developed in consultation with the Home Vijvens.

## Over tuinen en het landschap

We zijn het er meestal over eens dat een tuin bij een woning voor extra woonkwaliteit zorgt.

Meestal gaan we er ook van uit dat de bewoners van de woning de tuin als een logisch verlengstuk van de woning zullen gebruiken.

Wellicht is dat in vele gevallen ook zo. Voor de toekomstige bewoners van dit complex echter, is het gebruik van de tuin misschien net iets minder evident.

Niet alleen moet je proberen de bewoners te verleiden tot een wandeling buiten de kamer, en als dat lukt, kan je ze ook begeleiden naar de tuin.

De buitenruimtes moeten tegelijk uitnodigend en beschermend zijn, open en besloten, of tenminste moet men een keuze tussen beide kunnen maken.

Drie waarnemingsniveau's kunnen worden aan gesproken:

- kijken vanuit het raam van de kamer of het vertrouwde beeld
- kijken vanuit de oranjerie naar de tuin of het ontdekken van 'buiten'
- kijken vanuit de tuin naar het landschap of het beleven van 'buiten'

Als landschapsarchitect heb ik hier de meerwaarde van het architectuurconcept ontdekt. De wijze waarop de gebouwen en de hiertussen verweven glazen oranjerie een subtiele grens aangeven tussen de verschillende sferen en activiteiten heeft bijzondere kwaliteiten .

De oranjerie is het onmisbare scharnier in het gebruiken van de buitenruimtes. Vanuit de kamer komt je in deze aangename lichte en beschutten ruimte terecht. De sfeer die het beeld bij me oproept is er één van heerlijke kuuroorden uit vervlogen tijden, waar naaste de langzame bewegingen van de gasten, de stille doch snelle bewegingen van de verzorgers voor een plezierige mix zorgen van rust en activiteit.

De vele gezellige zithoeken laten toe om de oranjerie te gebruiken als uitkijkpost naar de omgeving. Naar de straat en het plein en de speeltuin van de school aan de ene kant, of naar de tuinen en het landschap aan de andere zijde.

Als het buiten koud is, blijf je netjes binnen, maar als het weer het toelaat, loop je gewoon de tuin in of het plein op.

Het binnenplein, met winkeltje, geeft aansluiting op het dorp. Een parkje zorgt voor de groene verbinding. Kleine moestuinen en bloementuinen zijn eveneens gesitueerd naar de pleinzijde.

De tuinen aan de andere zijde van de oranjerie zijn ontwikkeld rond een wandeling. Het introduceren van een circuit met herkenbare plekken geeft houvast bij de wandeling. De hellingen zijn zo gemoduleerd dat men een comfortabele wandeling kan maken.

De paden leiden naar de omsloten tuin met vlinders, de bessentuin, de rozentuin, de boomgaard, de kruidentuin, of ook nog de kippen- en konijnenren.

Halverwege vinden we de gloriëtte om even te gaan zitten, een praatje te maken, of gewoon van het landschap te genieten.

Ann Voets

Landschapsarchitect BVTL-ABAJP