

ZAHA HADID ARCHITECTS

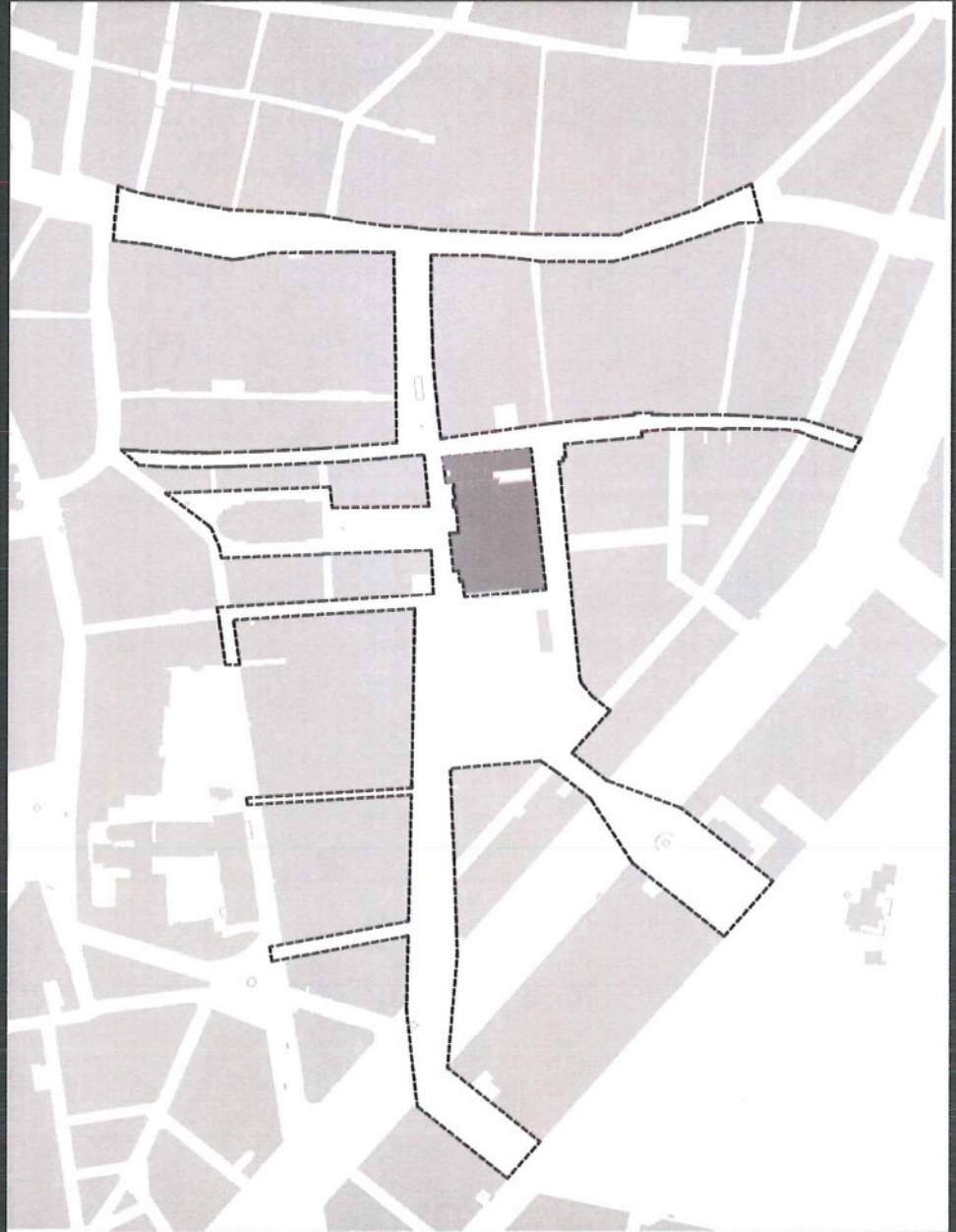
OPEN OPROEP THEATERPLEIN ANTWERP

CONCEPT STUDY

7 DECEMBER 2004

CONTENT

1. **Concept**
Program
Volumetric study
2. **Material and Reference**
3. **Cost estimate**
4. **From Concept to Completion**
5. **1 % For Art**



MARKET PROGRAM

1. Stall Space

Saturday 431

Sunday 900

2. Electricity Supply

9 electric power boxes [20 connections]

3. Police / Market Kiosk

Police Room 75 M2

Market Room 75 M2

Toilet 15 M2

4. Public Toilets

1 x 30 M2

5. Street furniture

Light Post / Benches / Water Feature / Bins

Bicycle Space

50 Spaces

Advertising Board

Map / Cultural Info / Theatre Program

8. Terrace Space

9. Parking

10. Others

Mobile Open air Stage

Transformation of escape staircases

Play Area

Temporary Bus Parking

Theatre Terrace

INTRODUCTION

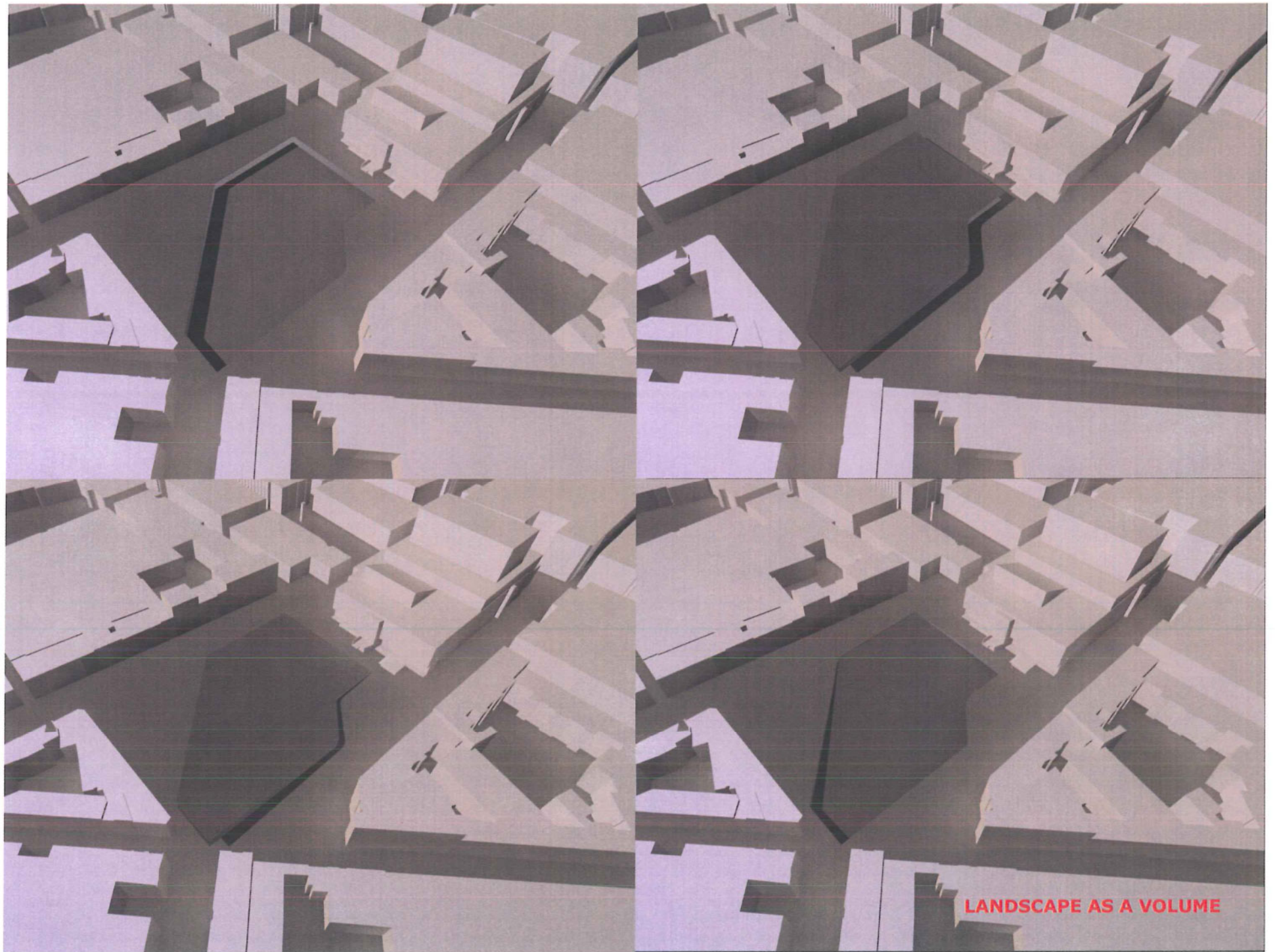
MASTER PLAN

Movement across the site and the contrary needs to accommodate weekly market activities along with untested civic, 'event' and un-programmed performances set an inherent conflict in the competition brief. Antwerp has an insufficient range of public spaces that can hold their own. Conflicting demands of public car routes, bus lanes, pedestrianised streets, markets, skate borders and Theaterplein's own incomplete theatre façade provide inadequate clues to the architects task. The static and moving elements of daily and weekly activities on the Plein, the criss-crossing patterns do not hold the attention of the public. Markets are not enough. Debate, commerce, theatre, tradition, ritual; each, if built up could be harnessed as elements to aid the architect in designing to a familiar brief, responding and researching towards an architectural solution. There is no ideology about the place. Antwerp's underground tradition of outré craft activities could well be marketed and sold here. The 20th and 21st century fashion-led market attraction of Antwerp, it's new civic building plans and the omni-present tourism that replaces industry and manufacture. The misleading pressure to fill the square when it naturally can be occupied over time, by osmosis; a civic attitude that demands experiment.

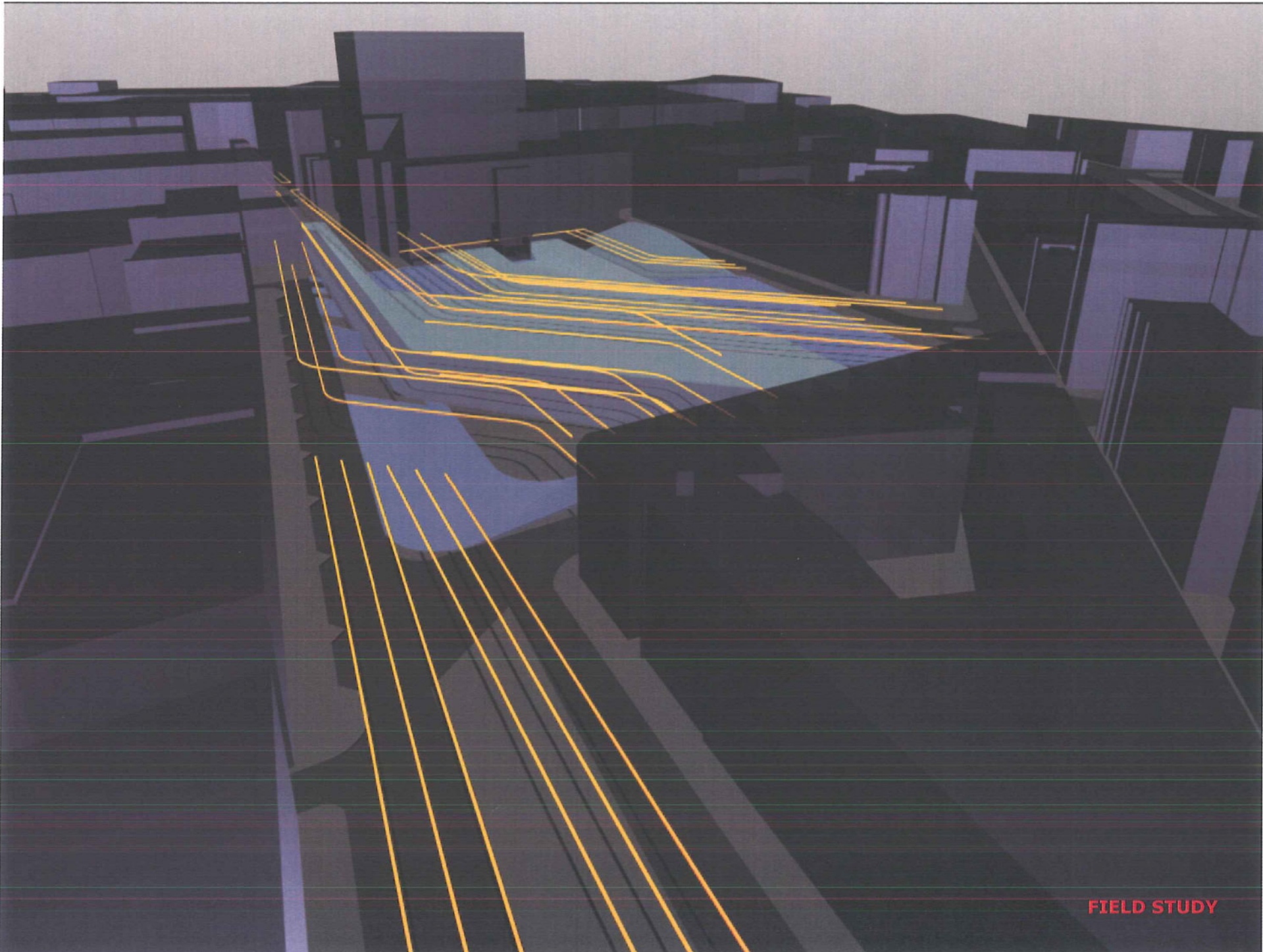
The townscape design essence is subtle and small scale. Imbedded electronic media, water, light, concrete, signage, foliage, stone, steel and timber all within the terrace edged plate-like ground form.

INTERIOR

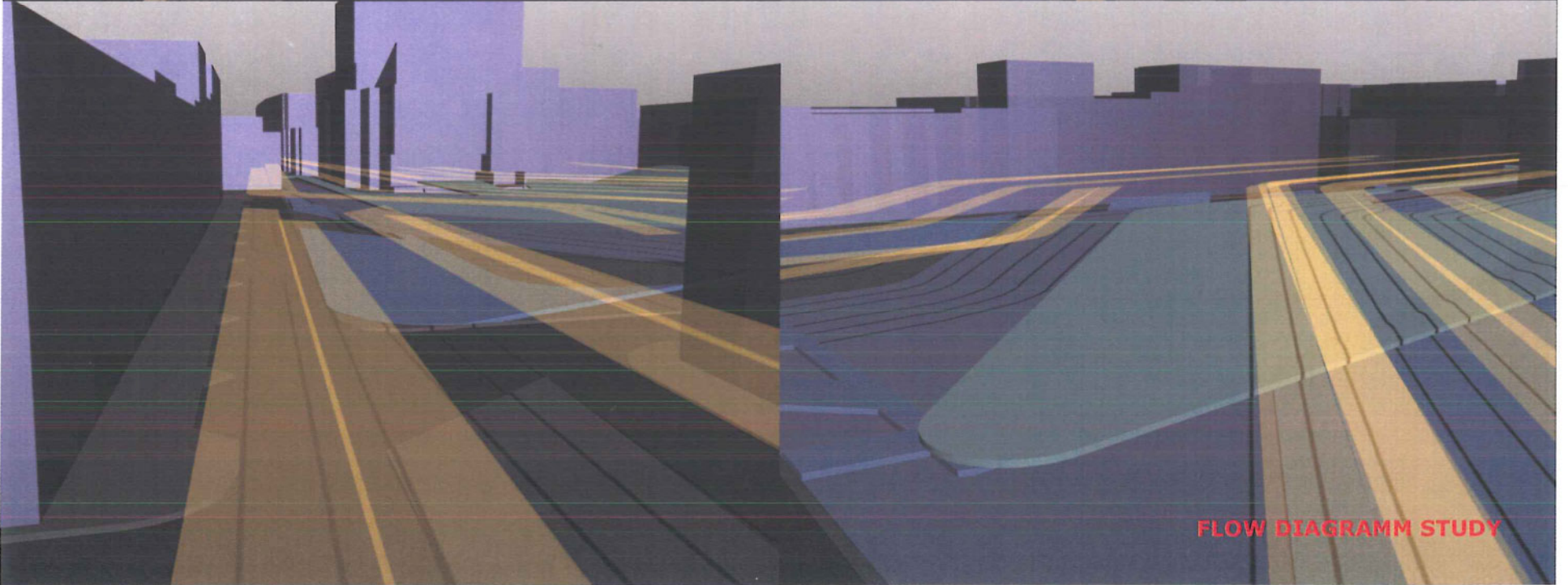
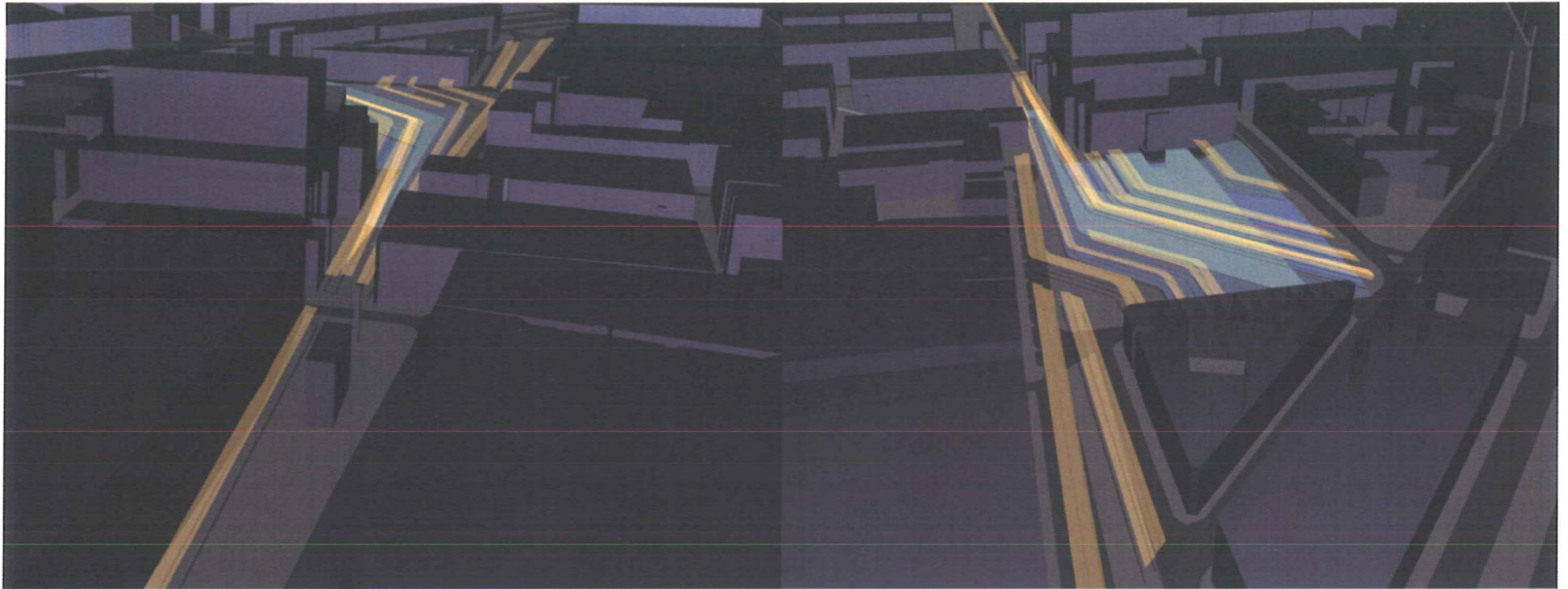
City spaces are often abused. The car park in Isfahan mosque square. History and religion could not fight the contemporary mix. Edging or closing the square is to privatise the space, a familiar phenomenon that prevents democracy and choice. Retaining an open, free zone here indeterminate is flexible enough for the medium term investment. A project timetable, not for the design or construction, but for the management and sponsorship of the space must be undertaken; to monitor virtues over vices. The square in front of Centre Pompidou is sponsored by the galleries behind. It is under surveillance. Theaterplein will need it's own champion, curator and manager.



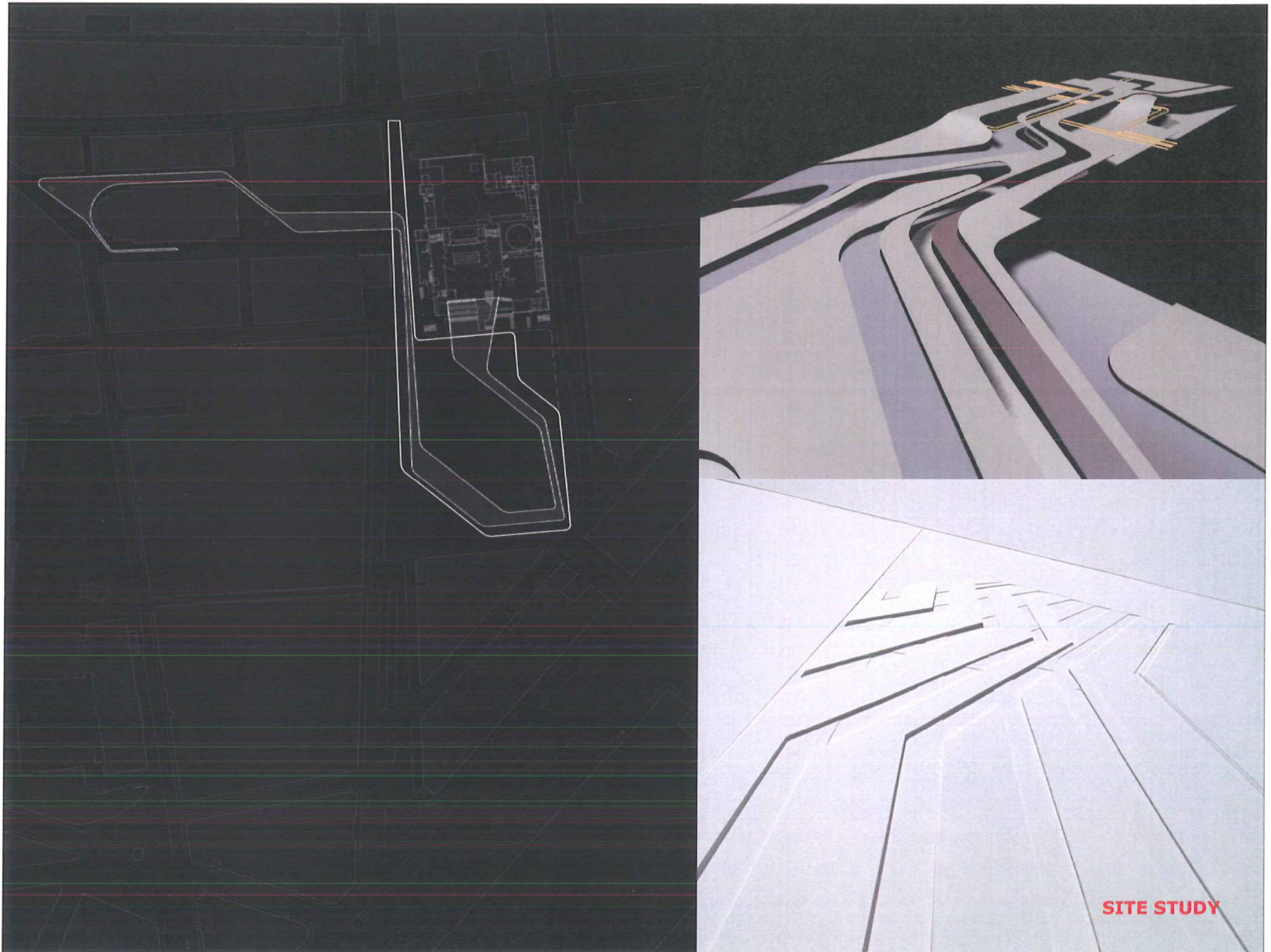
LANDSCAPE AS A VOLUME



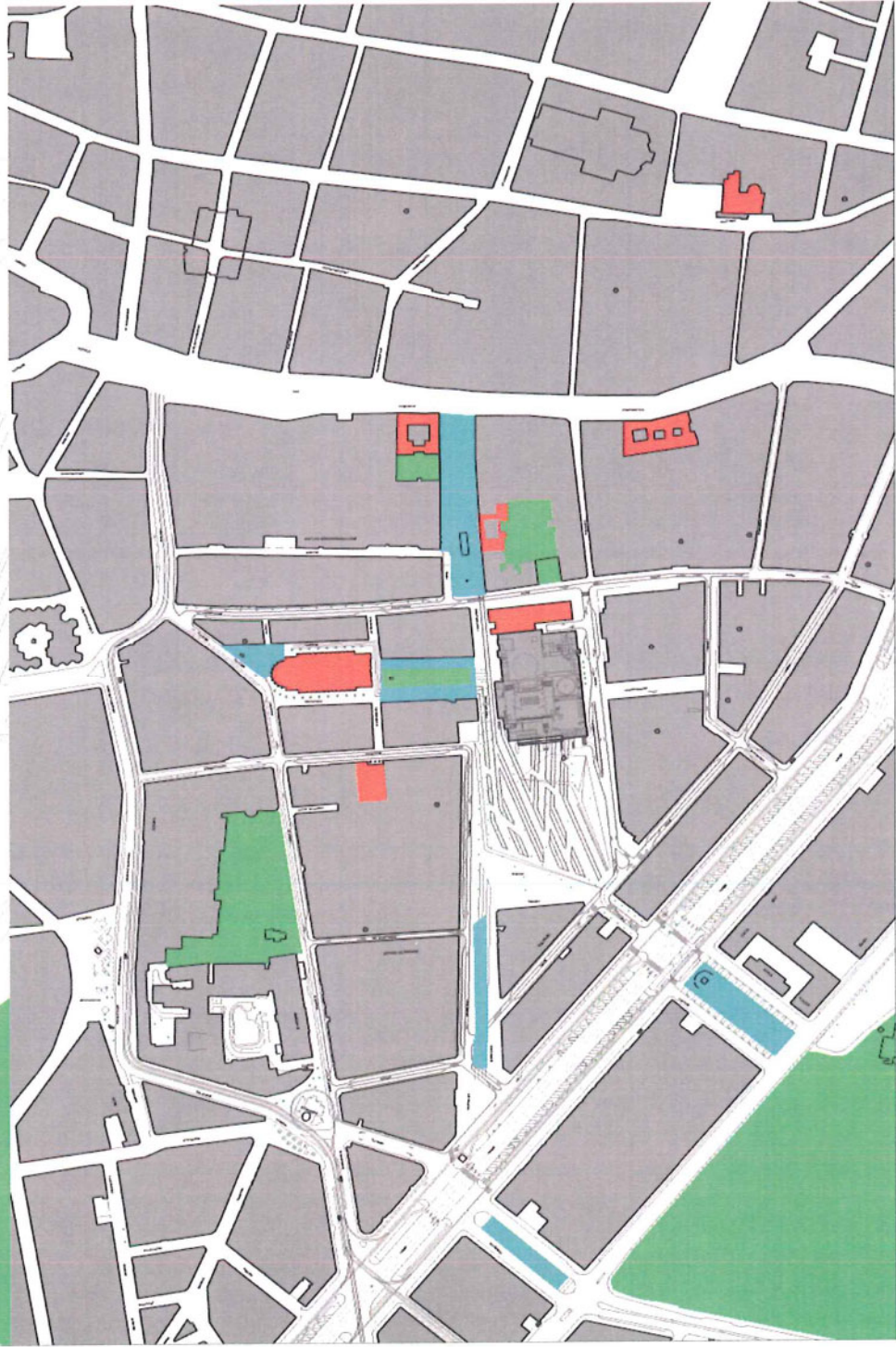
FIELD STUDY

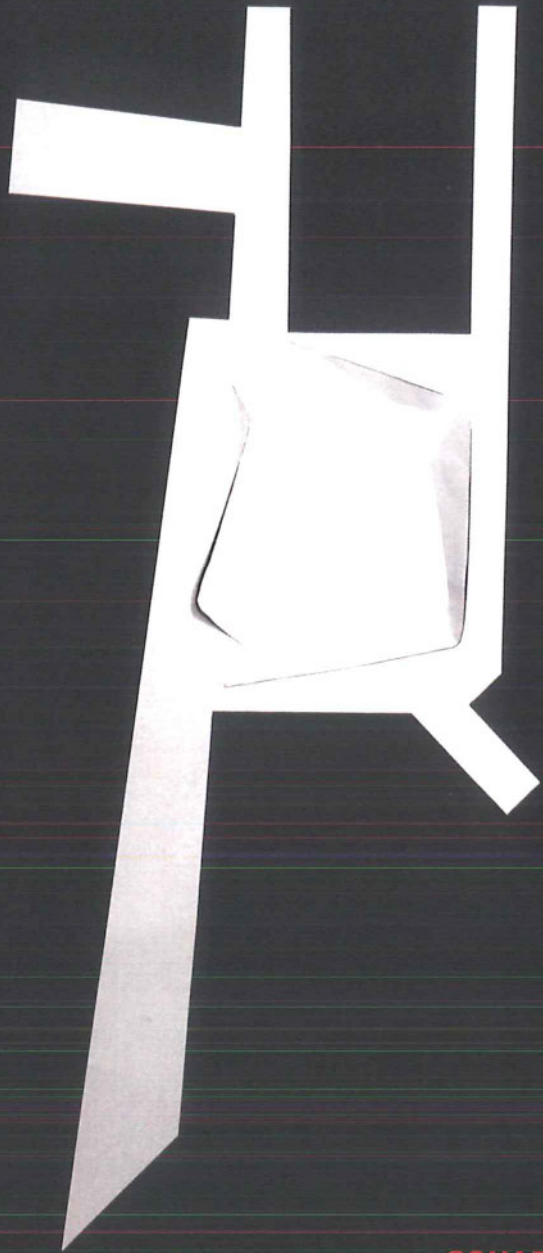


FLOW DIAGRAMM STUDY

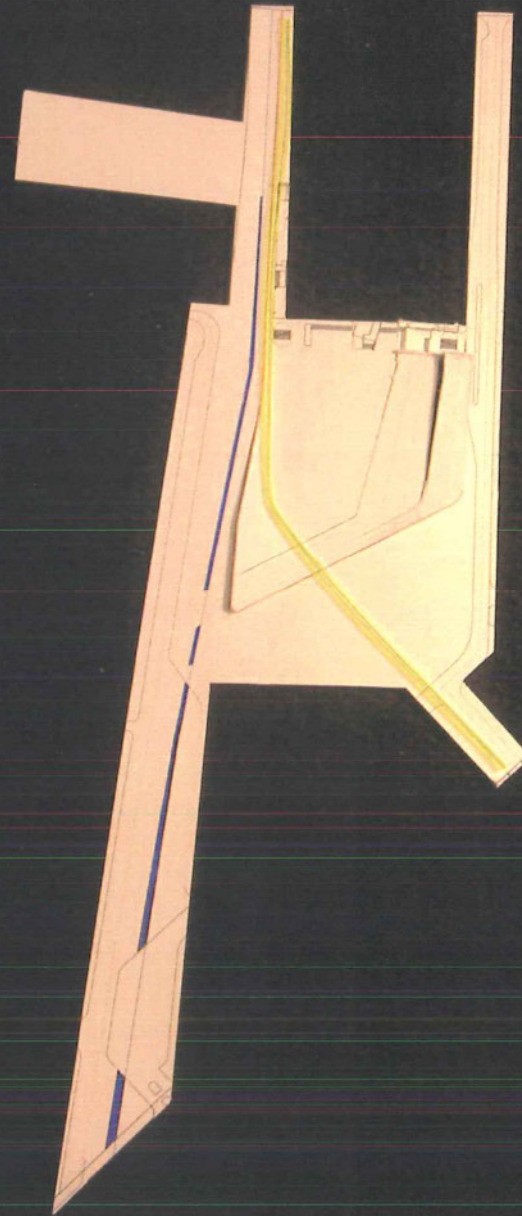


SITE STUDY

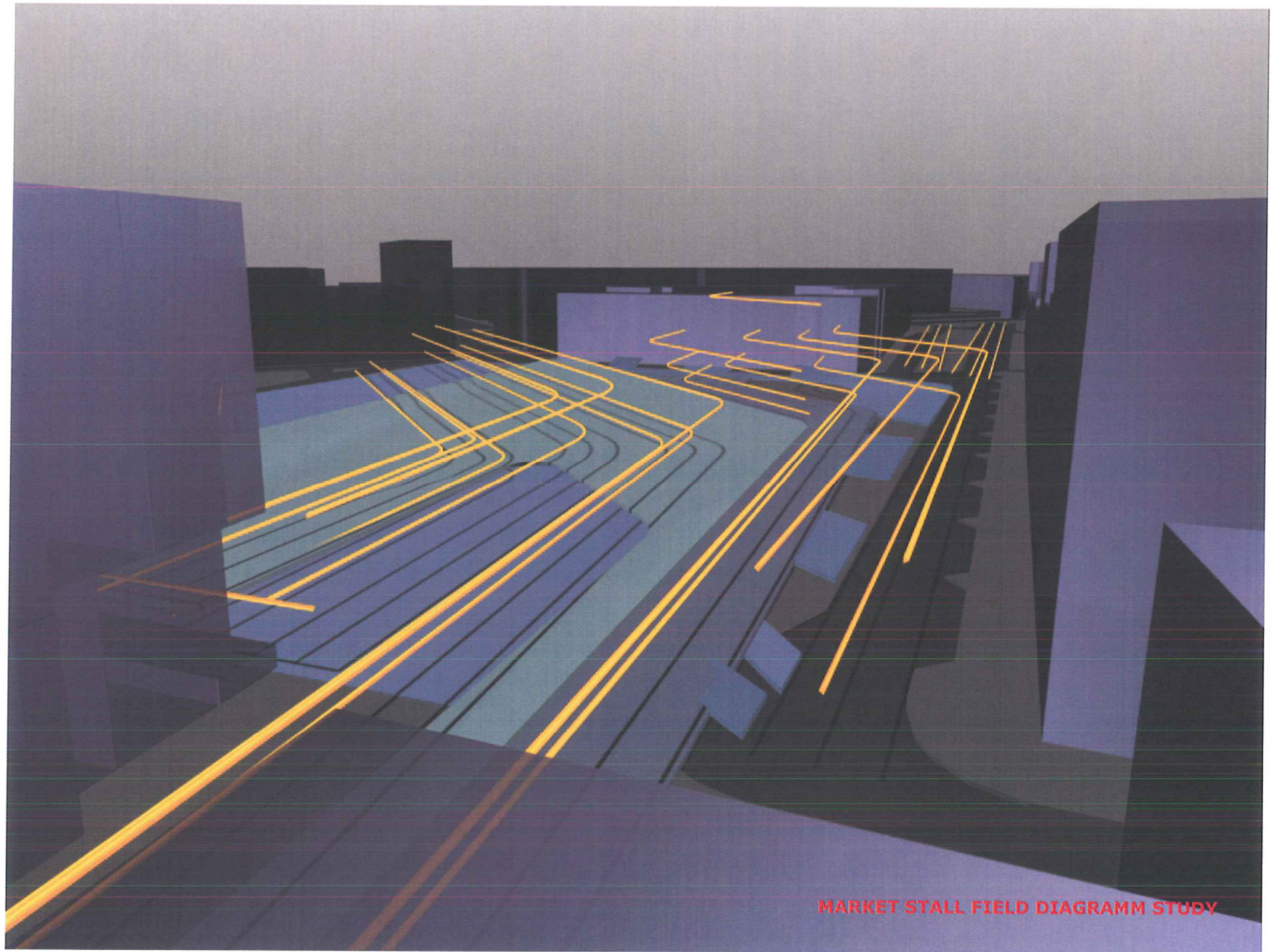




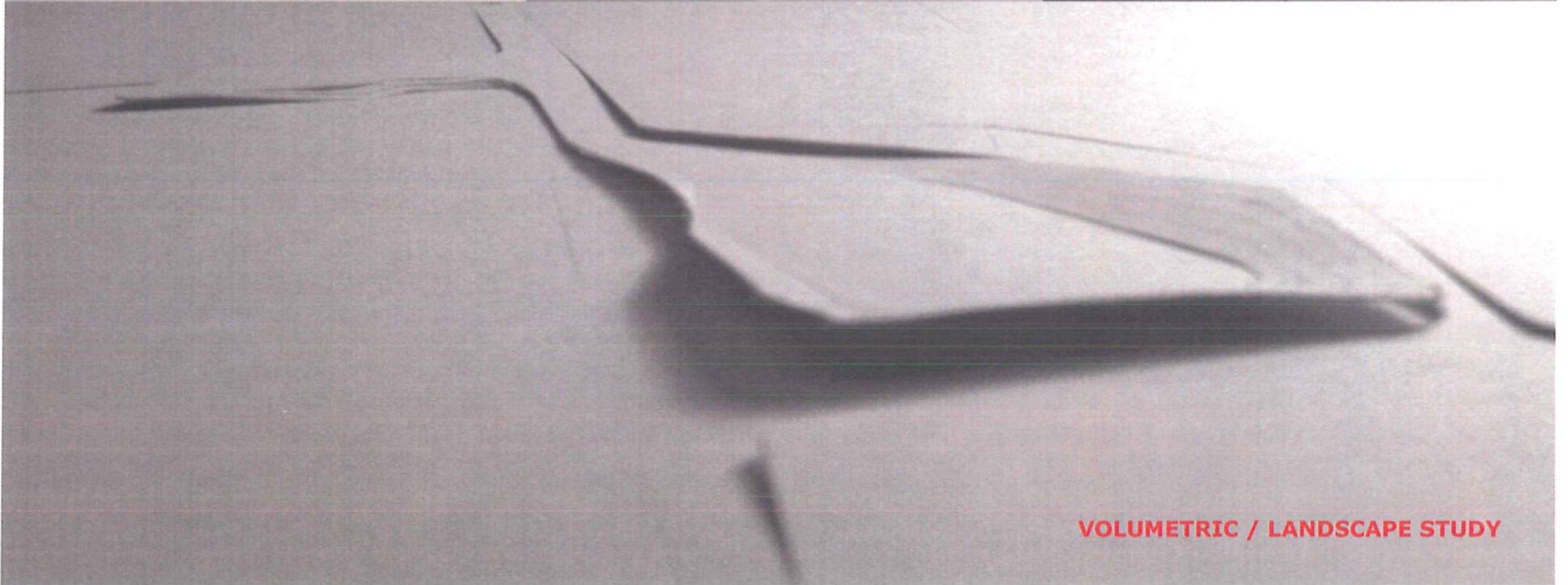
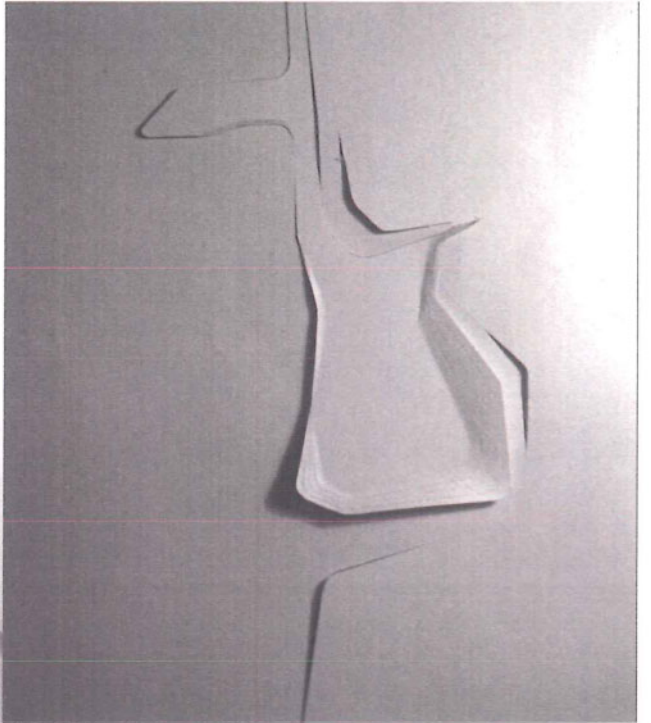
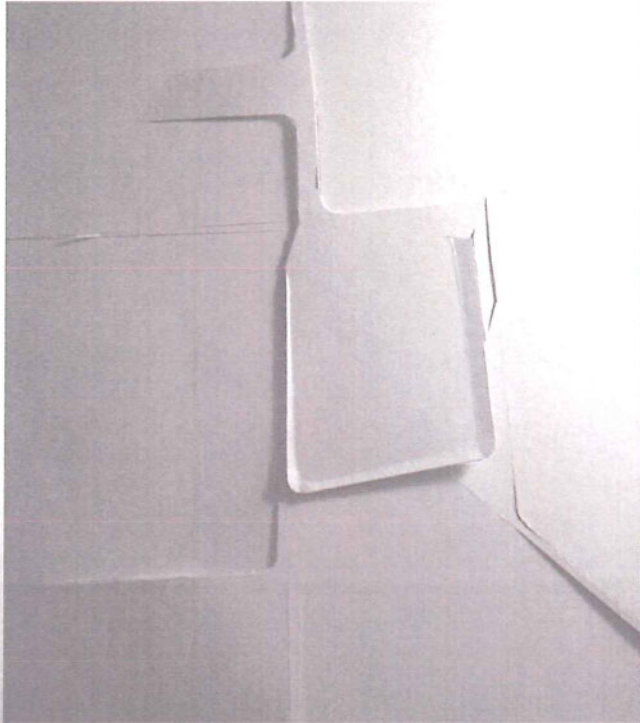
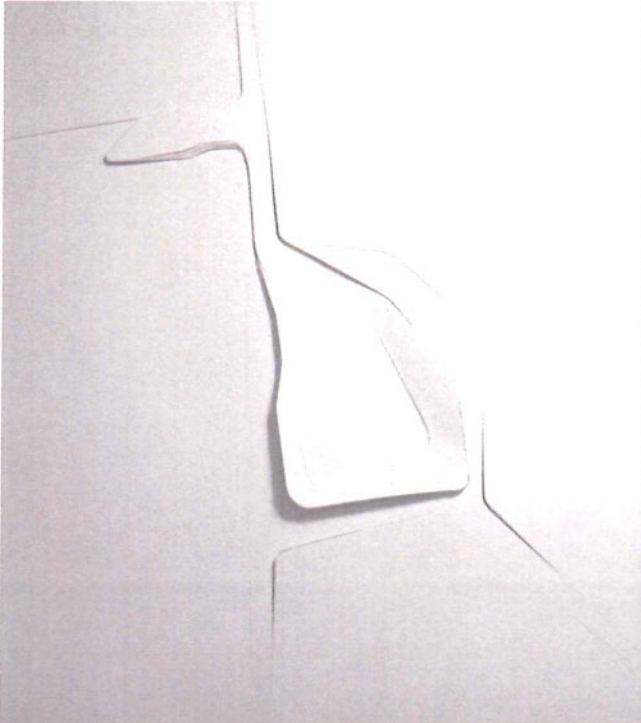
SQUARE DISH STUDY



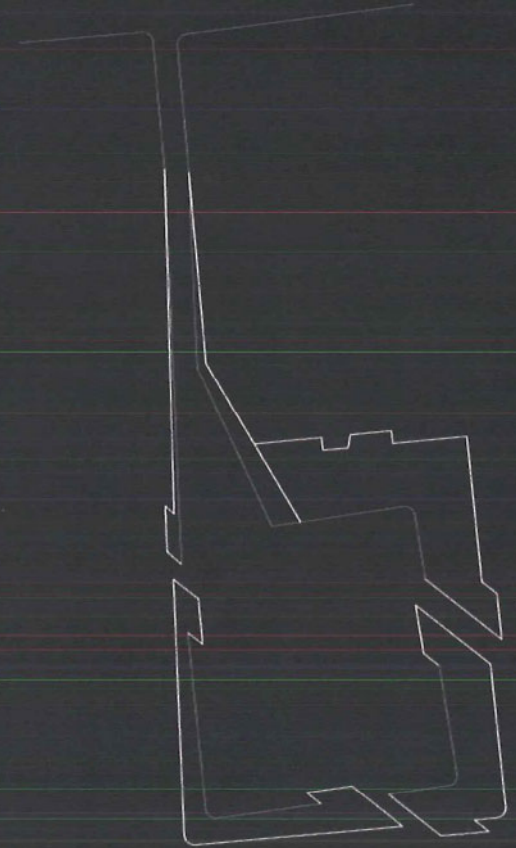
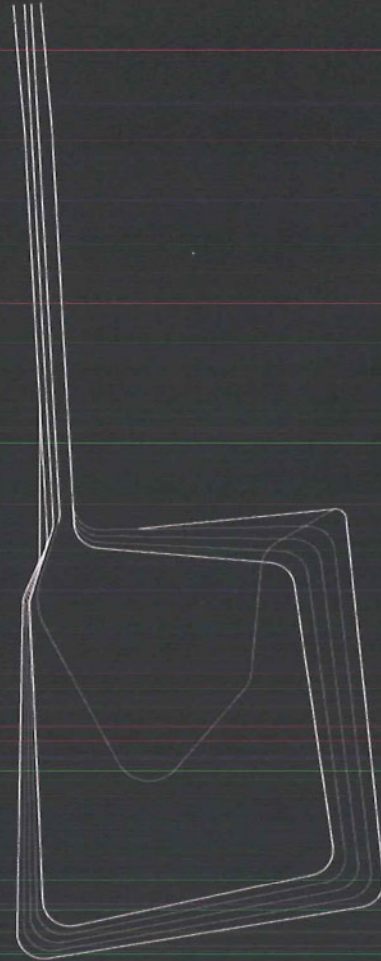
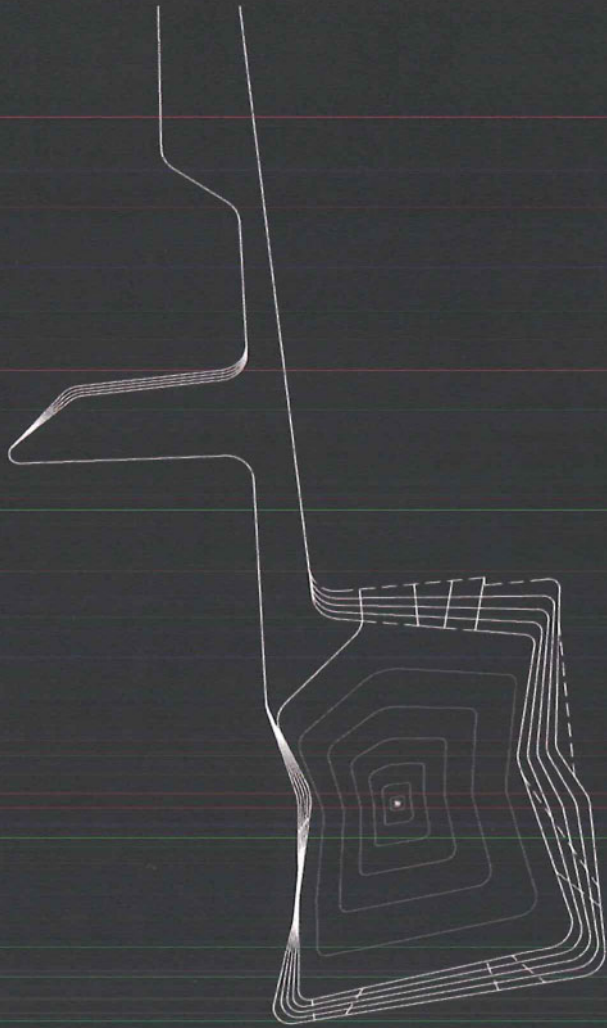
MARKET DIAGRAMM STUDY

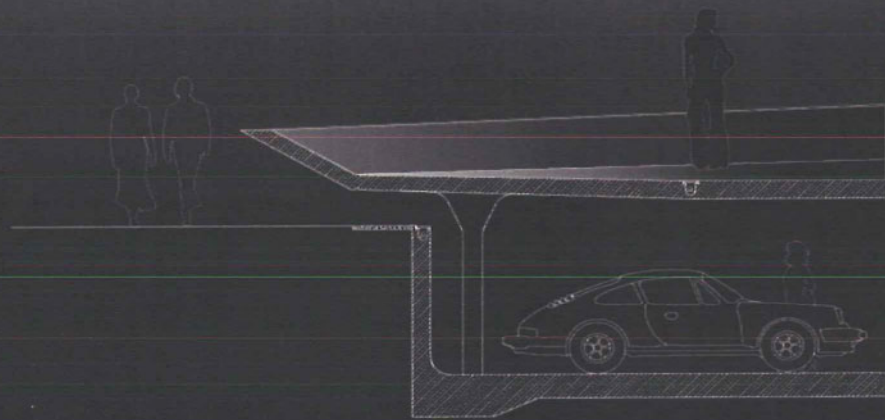


MARKET STALL FIELD DIAGRAMM STUDY

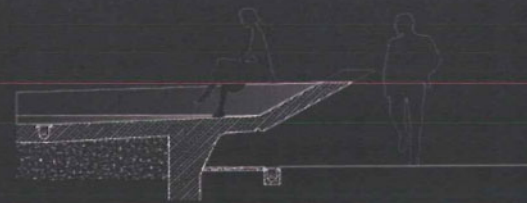


VOLUMETRIC / LANDSCAPE STUDY

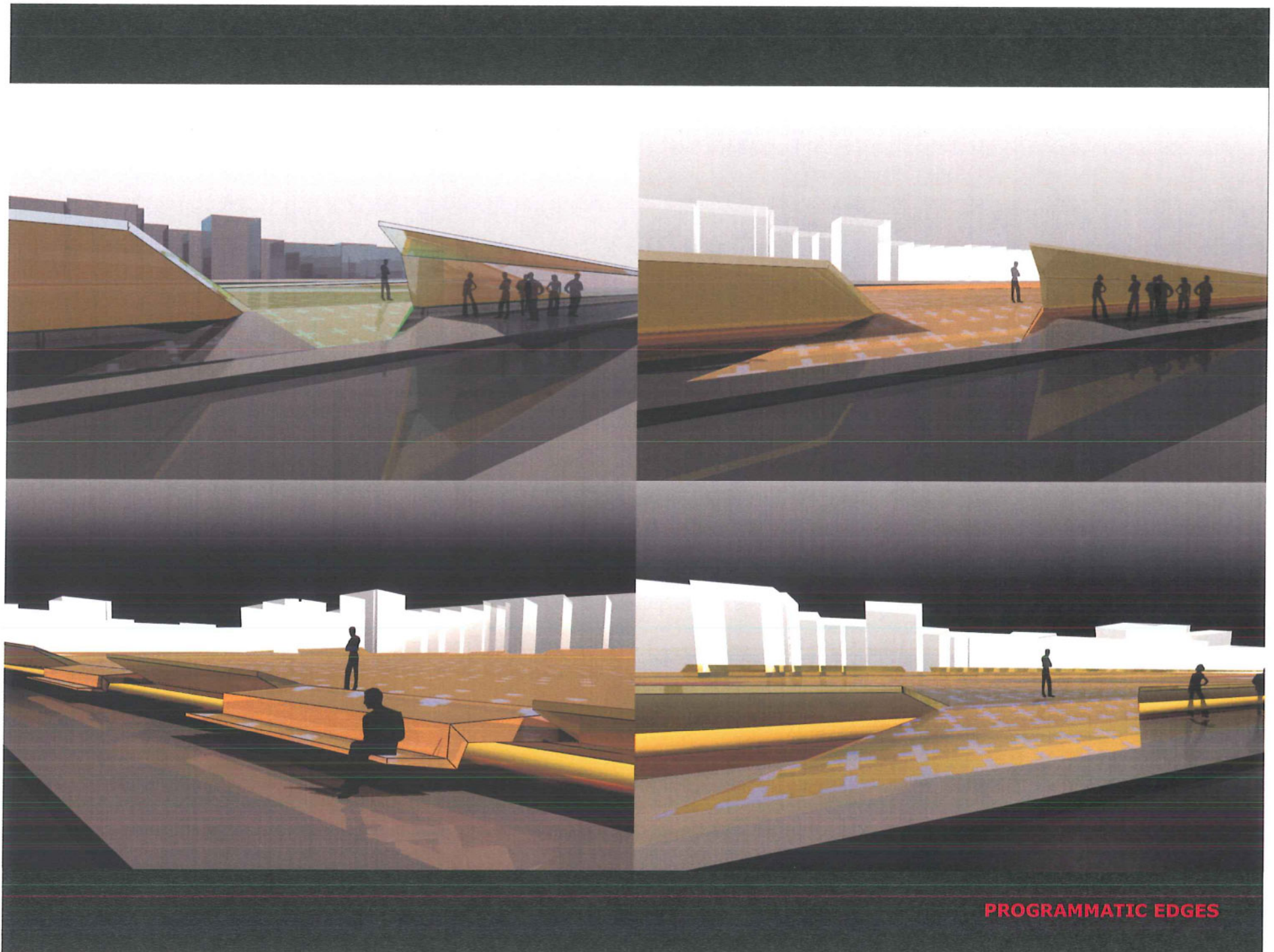




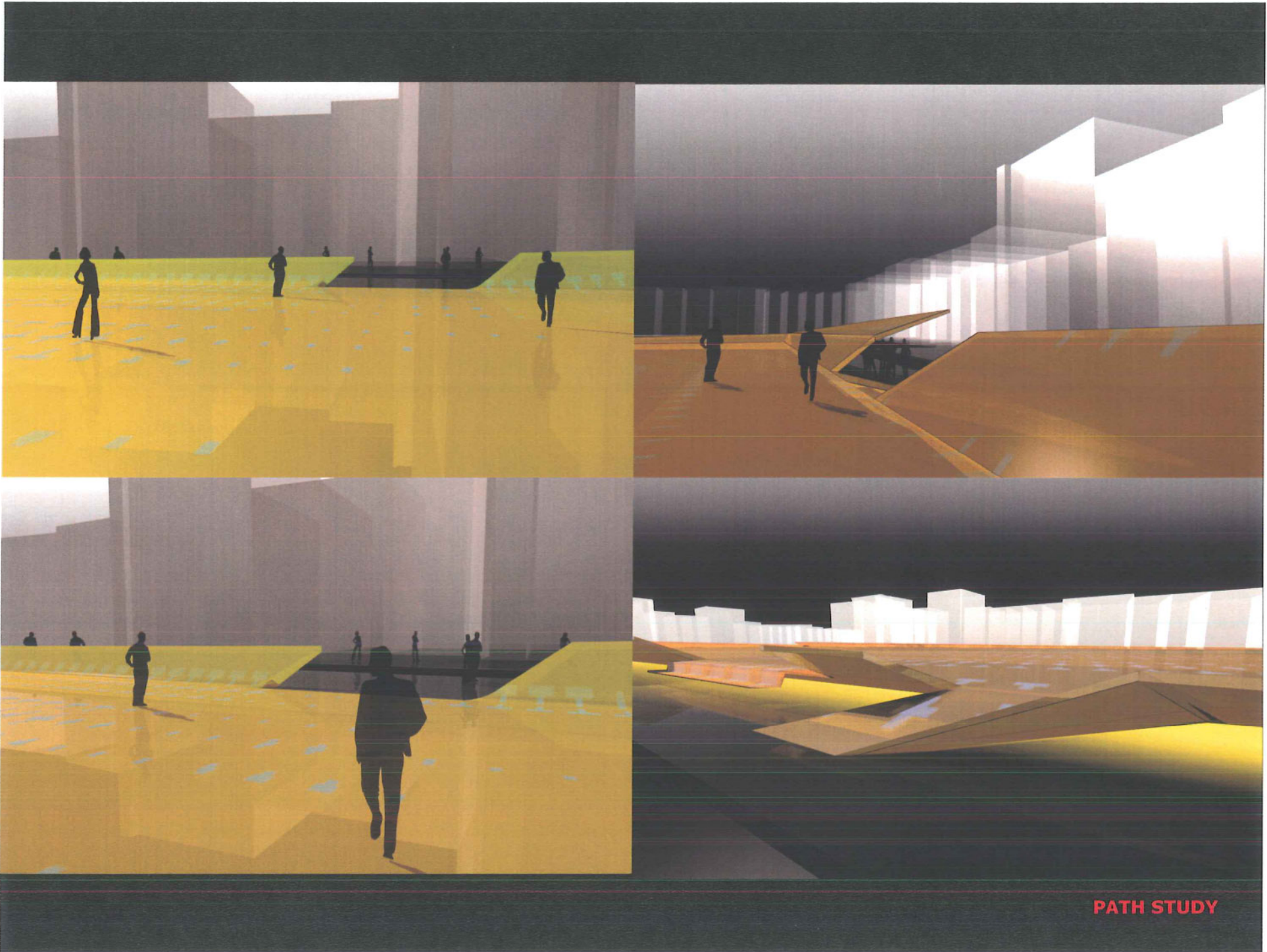
OPTION A : Parking Extension



OPTION B : New Landscape



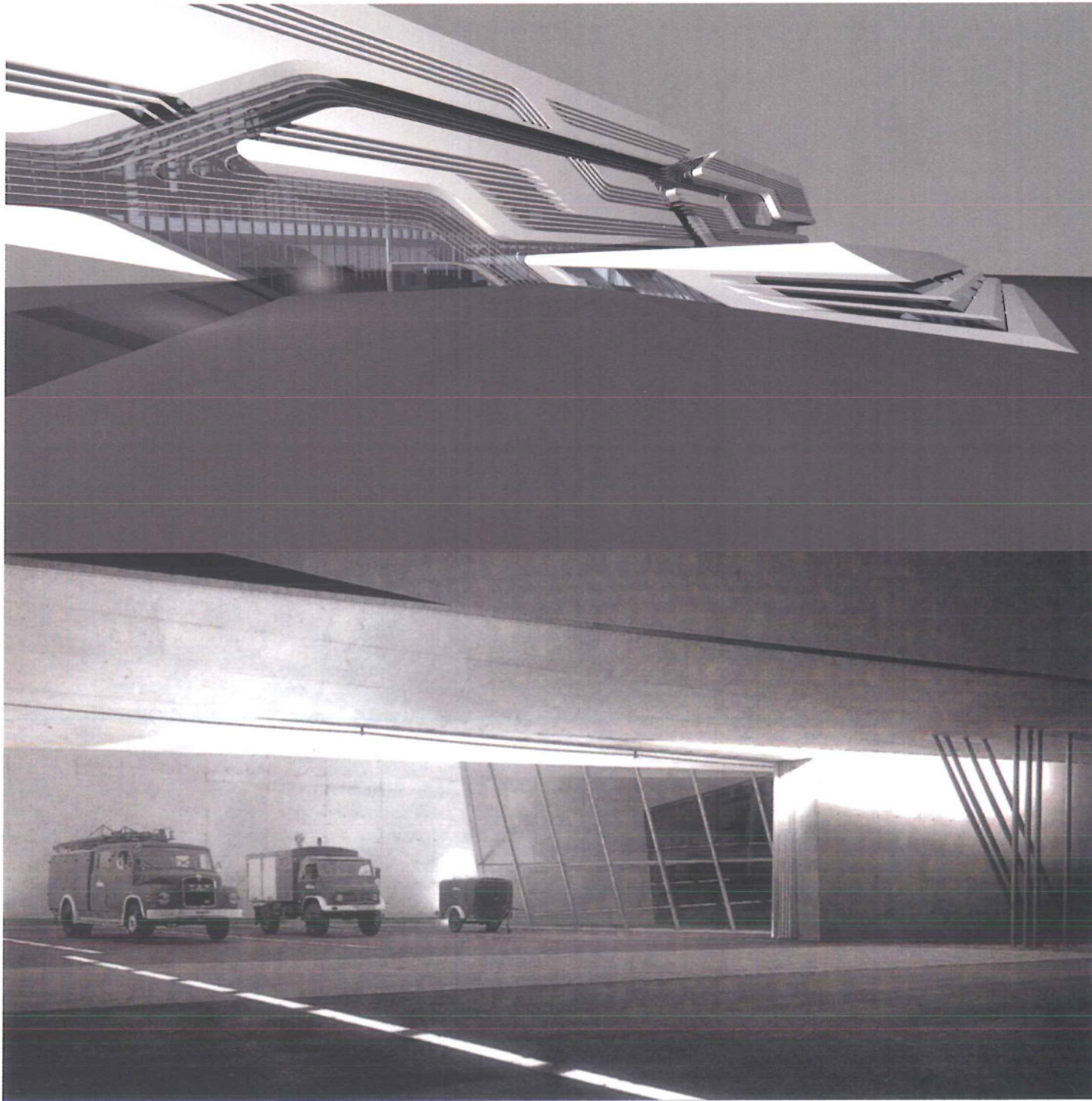
PROGRAMMATIC EDGES

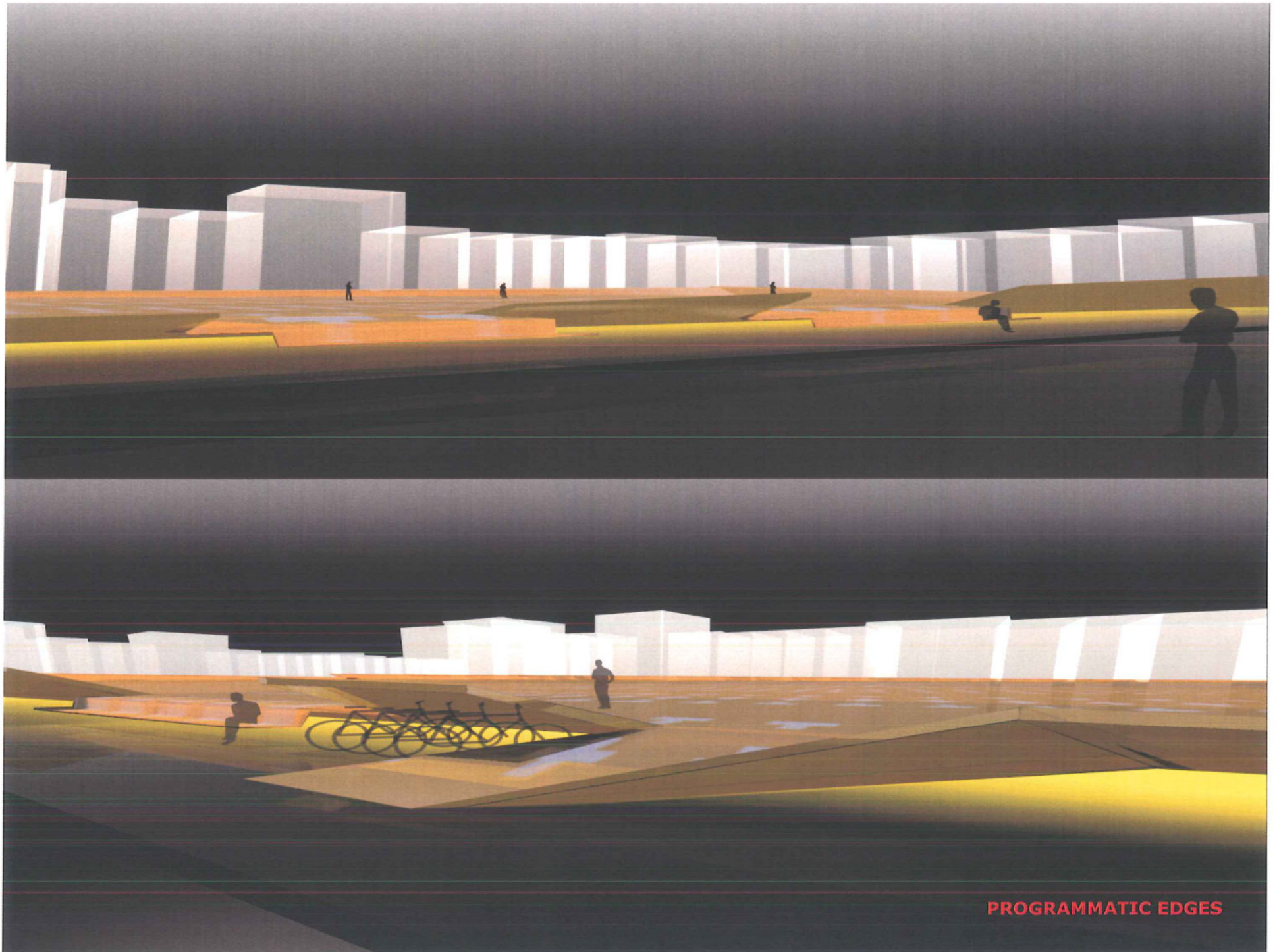


PATH STUDY



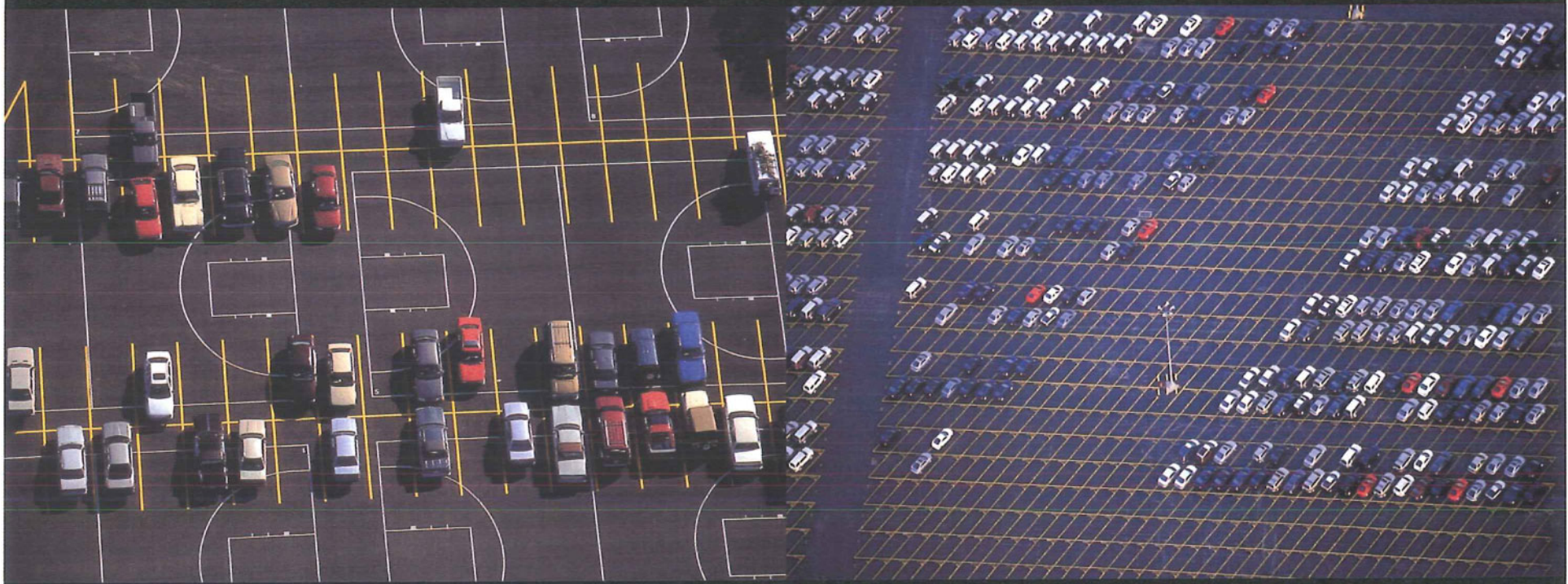
FUNCTION OVERLAY



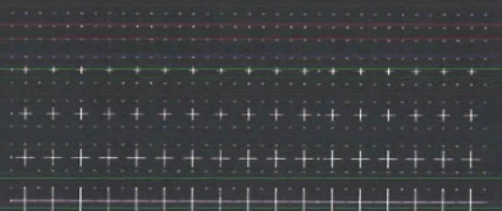
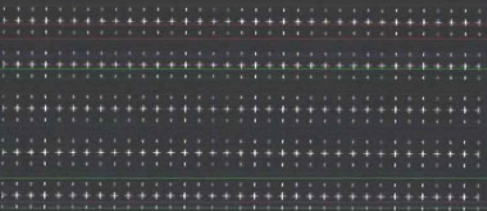
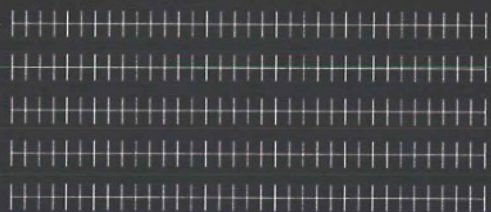
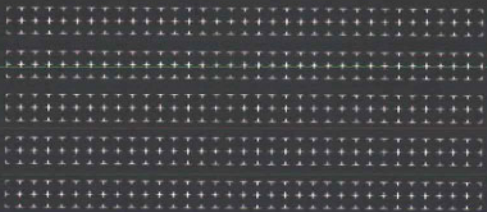
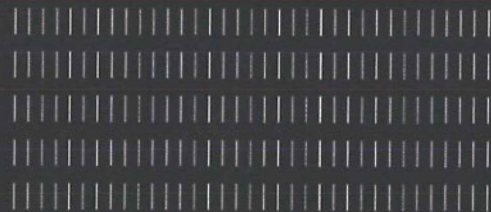
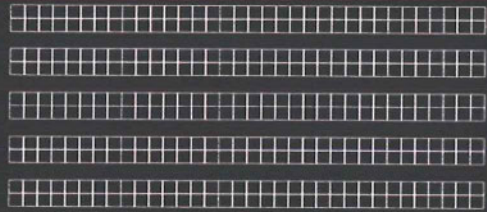


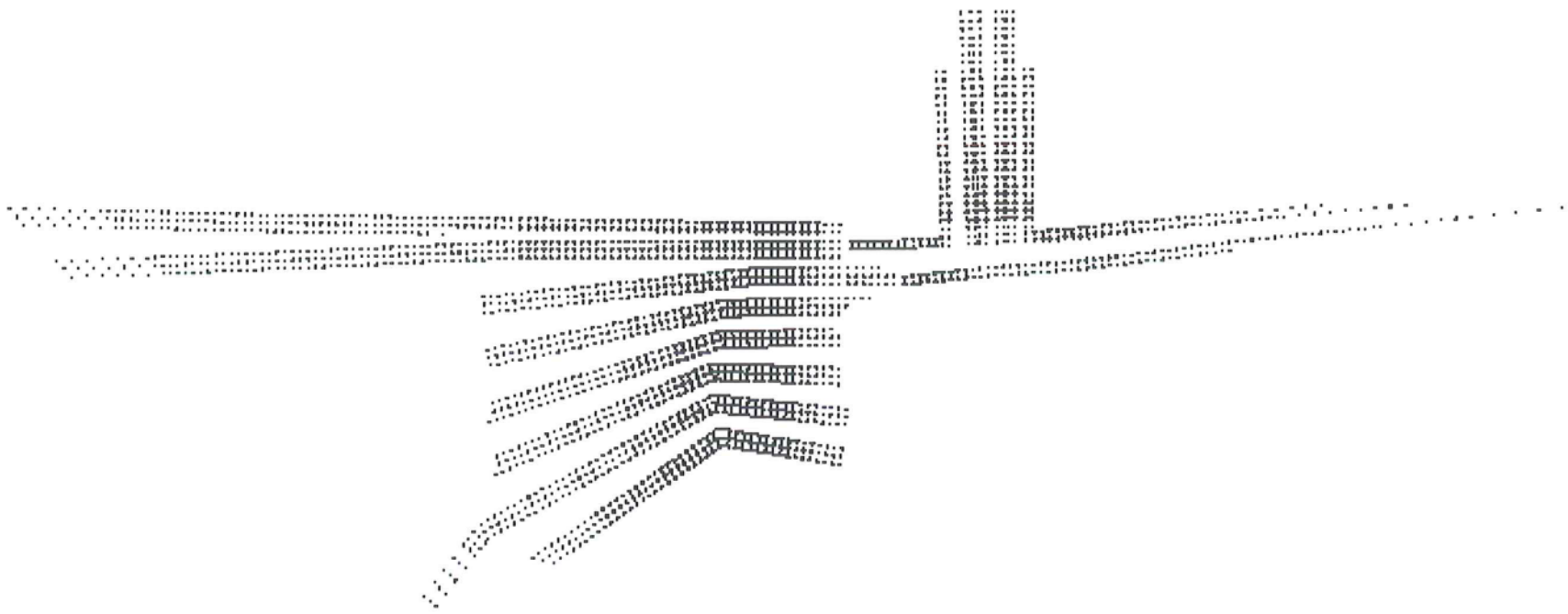
PROGRAMMATIC EDGES

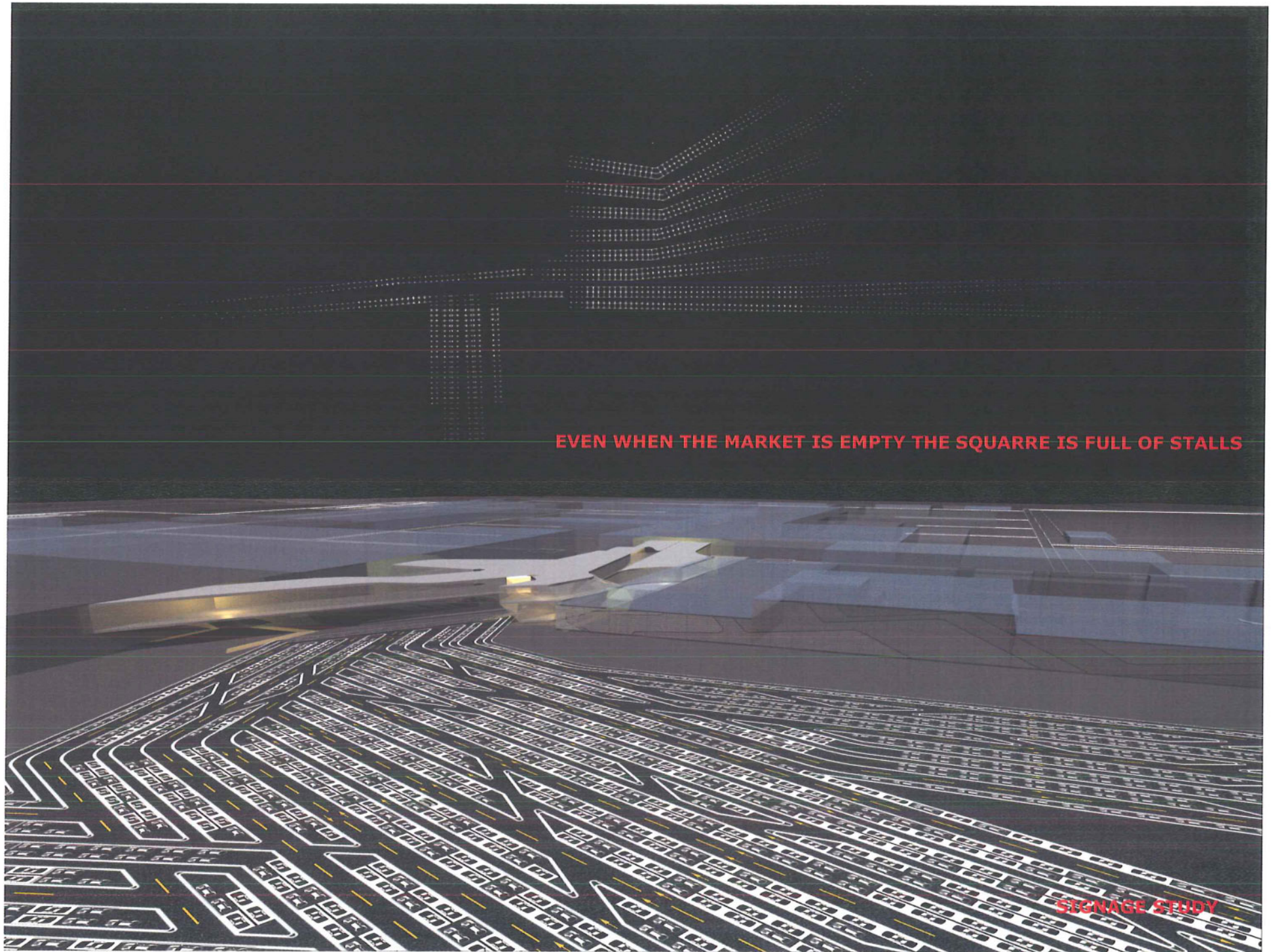




OVERLAY OF FUNCTION

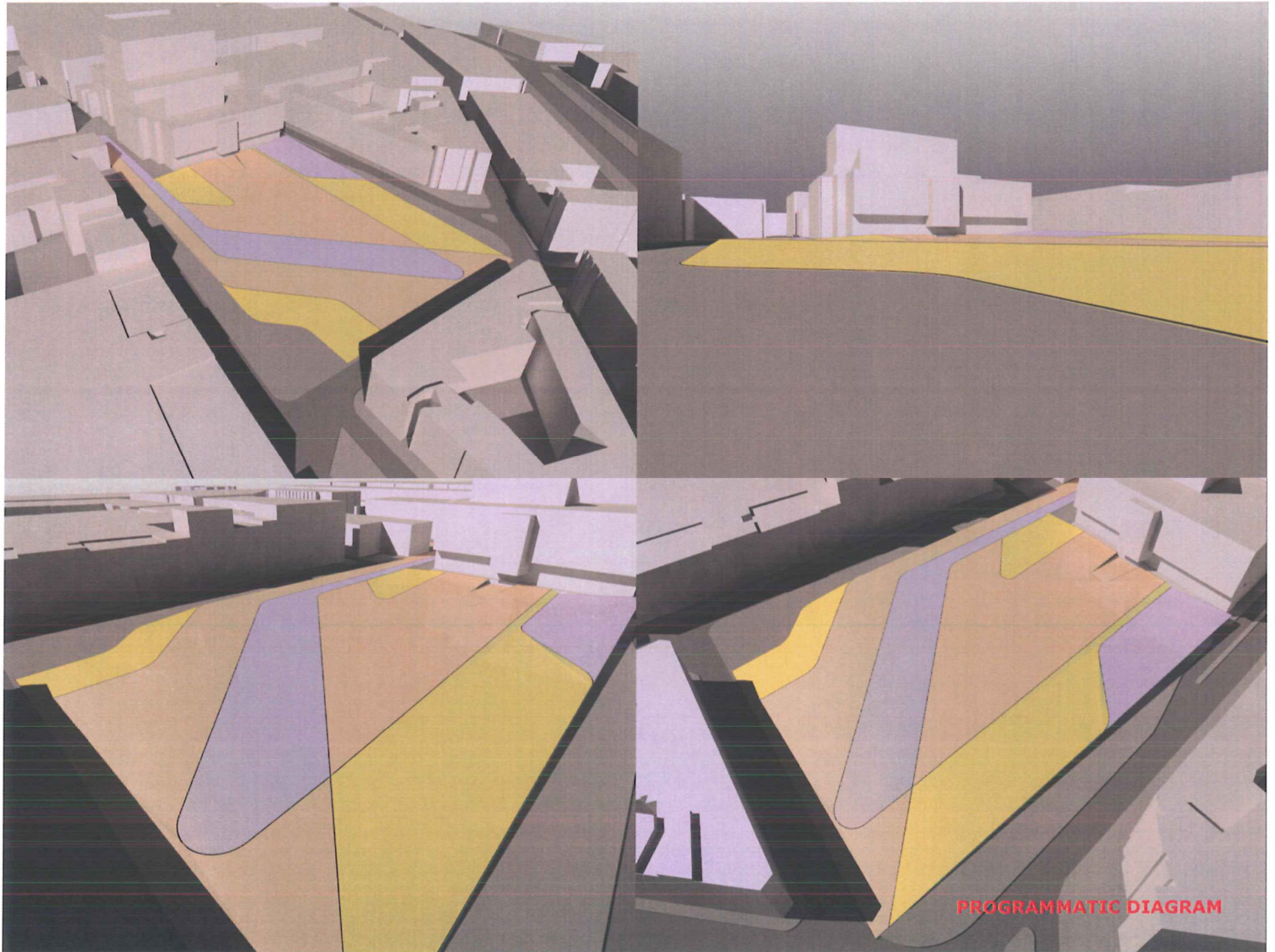




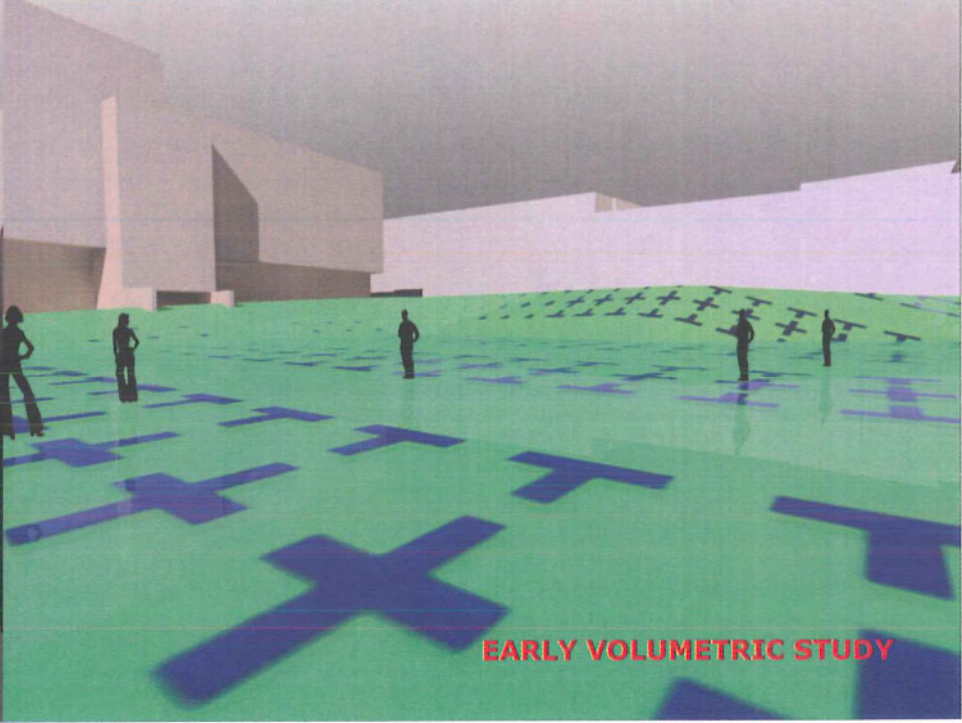
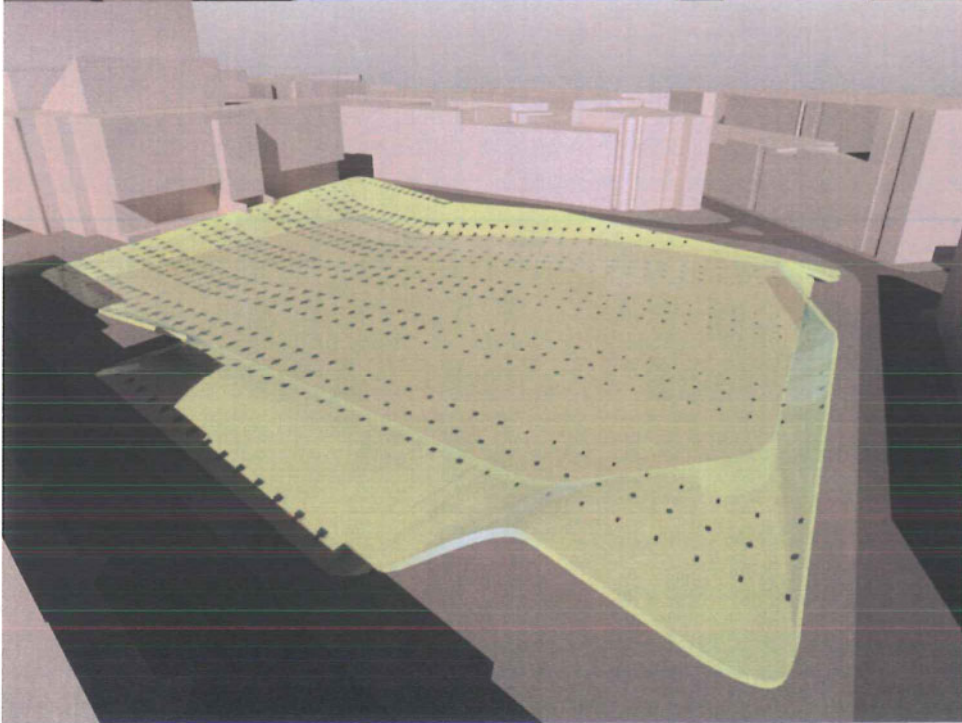
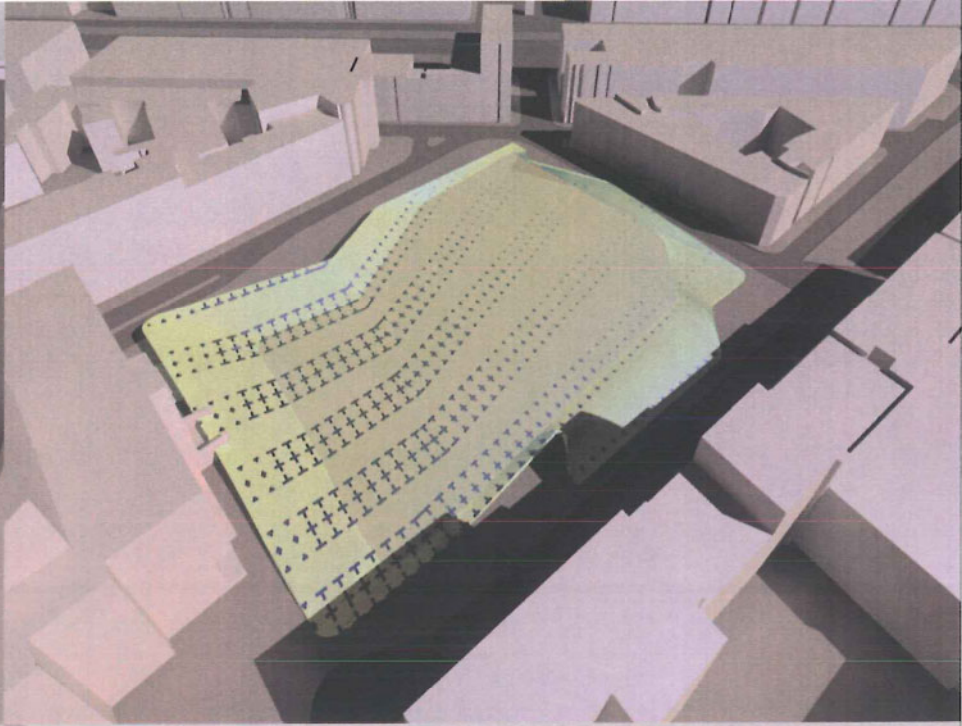
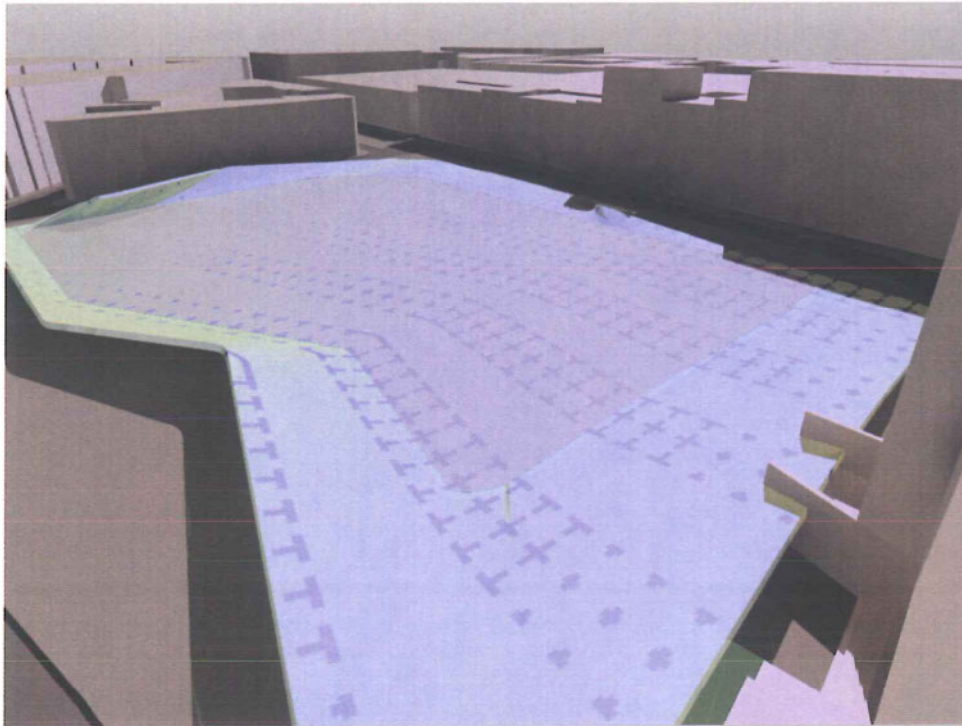


EVEN WHEN THE MARKET IS EMPTY THE SQUARE IS FULL OF STALLS

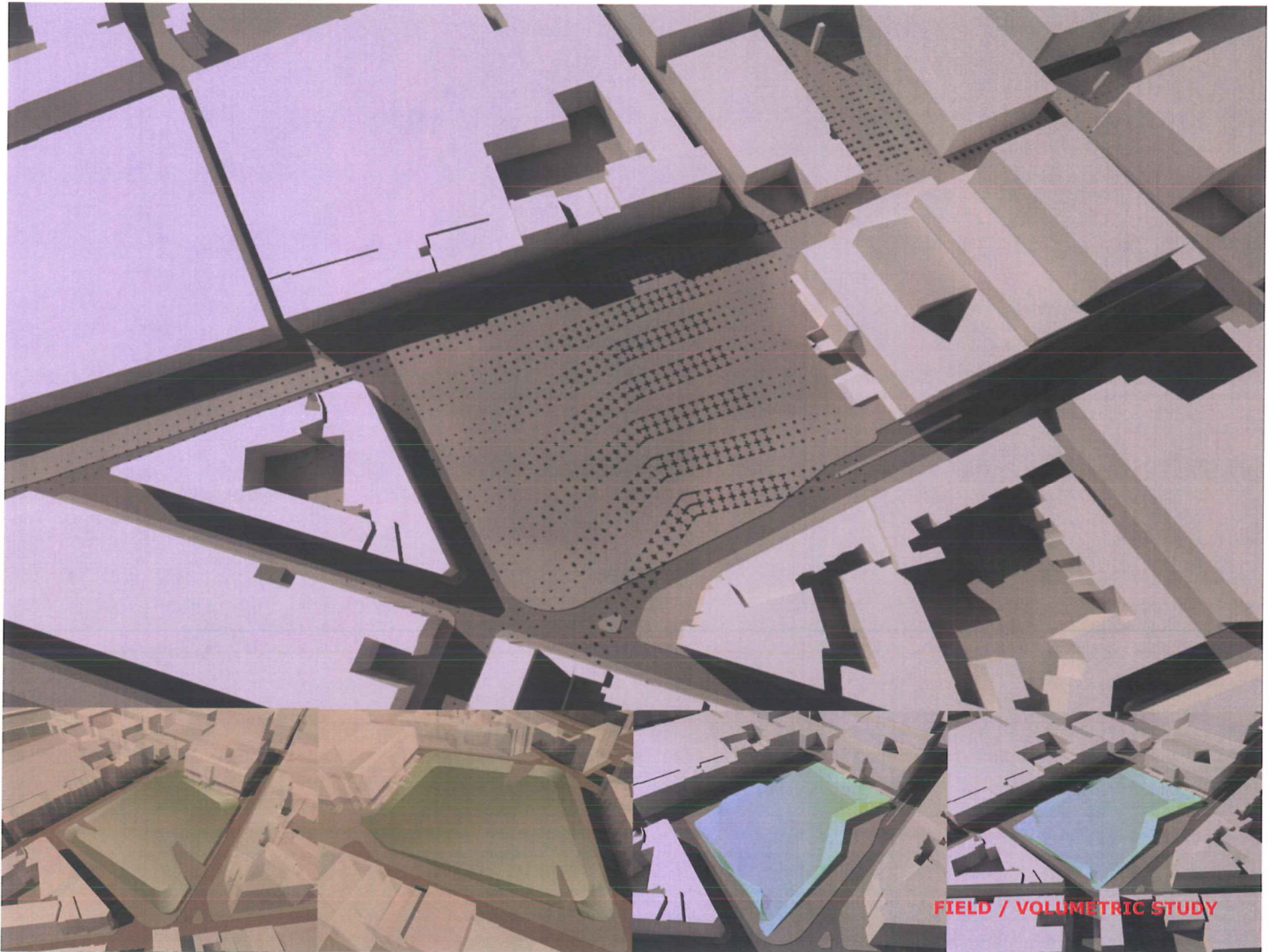
STORAGE STUDY



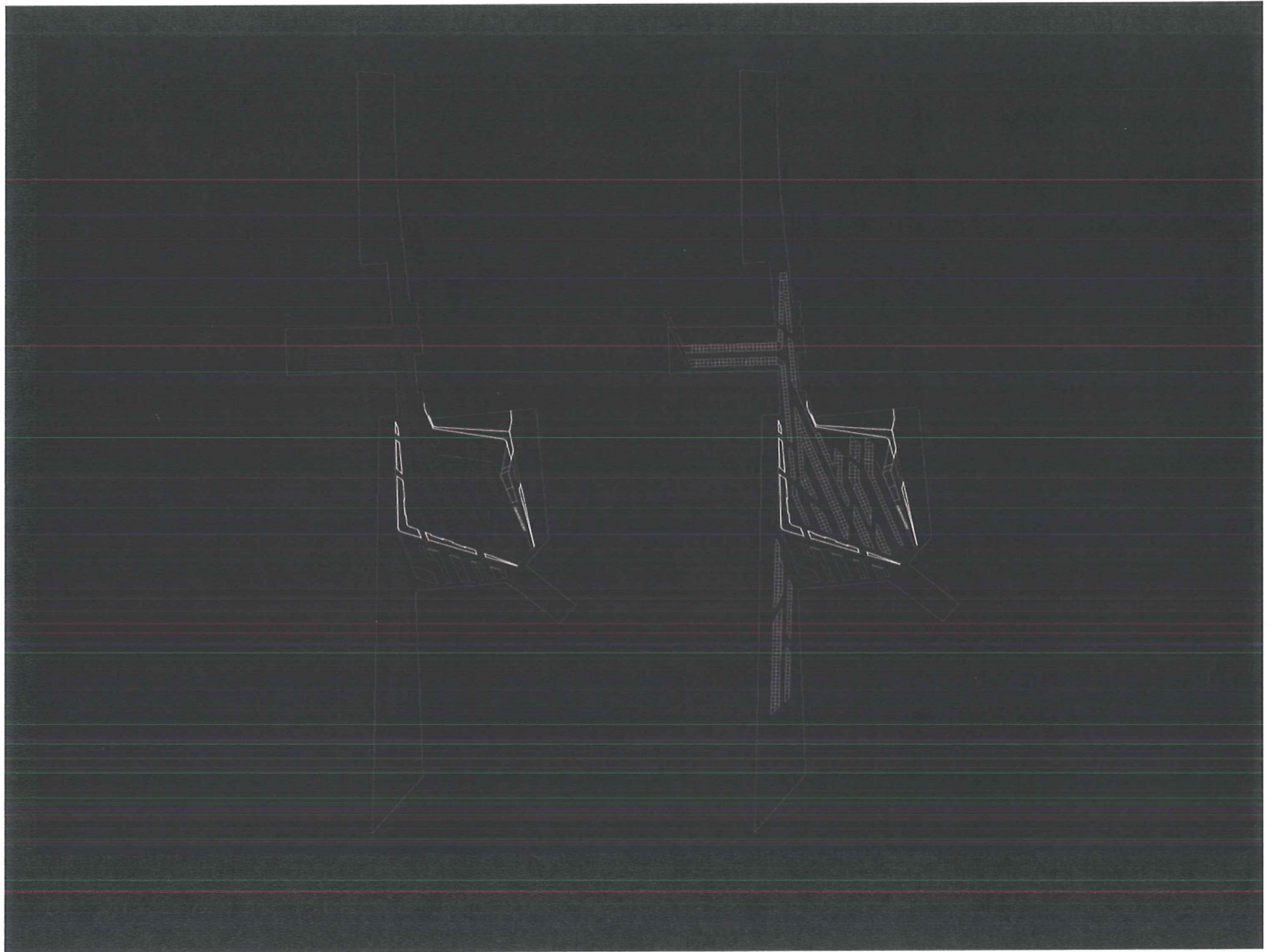
PROGRAMMATIC DIAGRAM

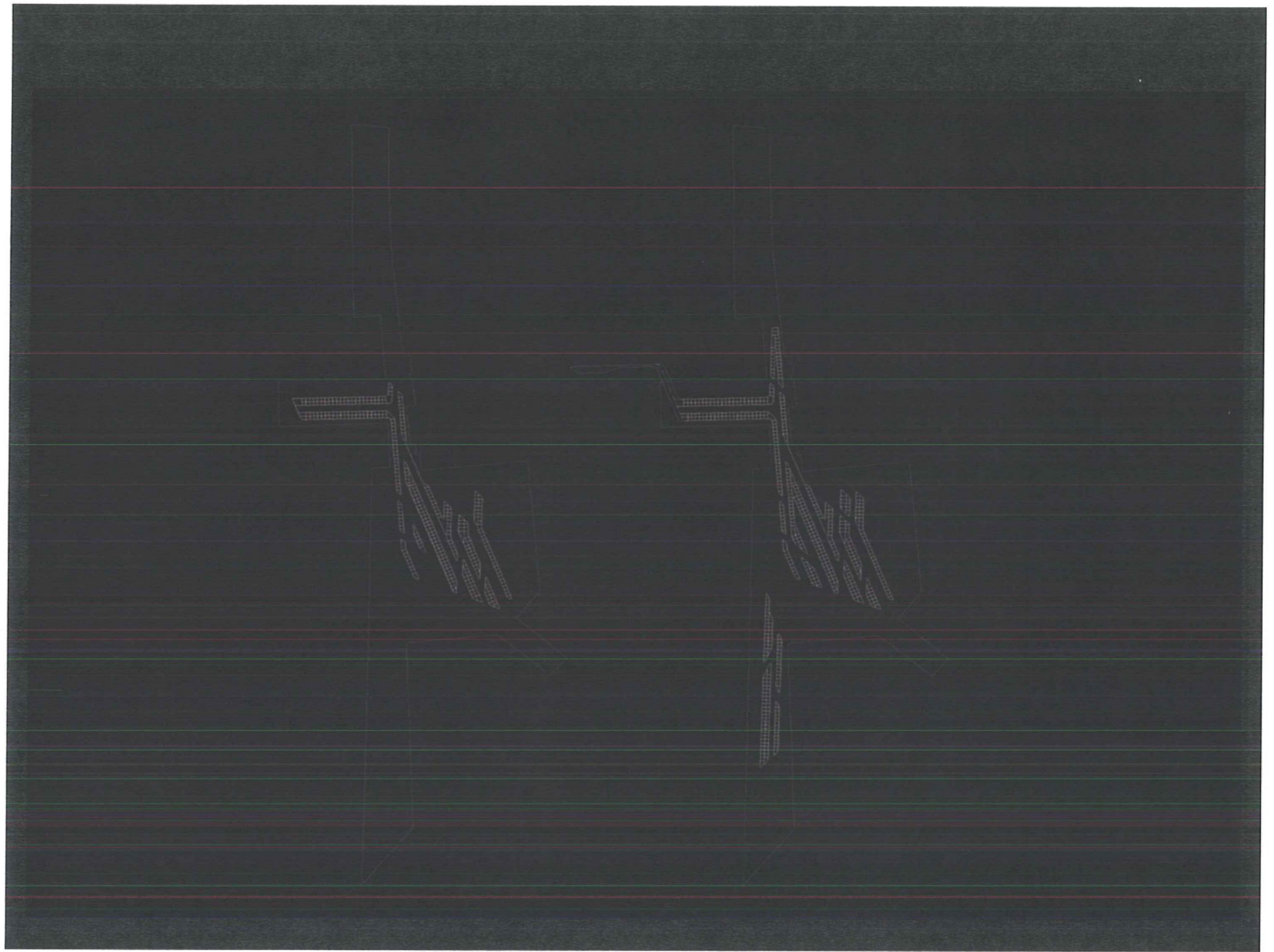


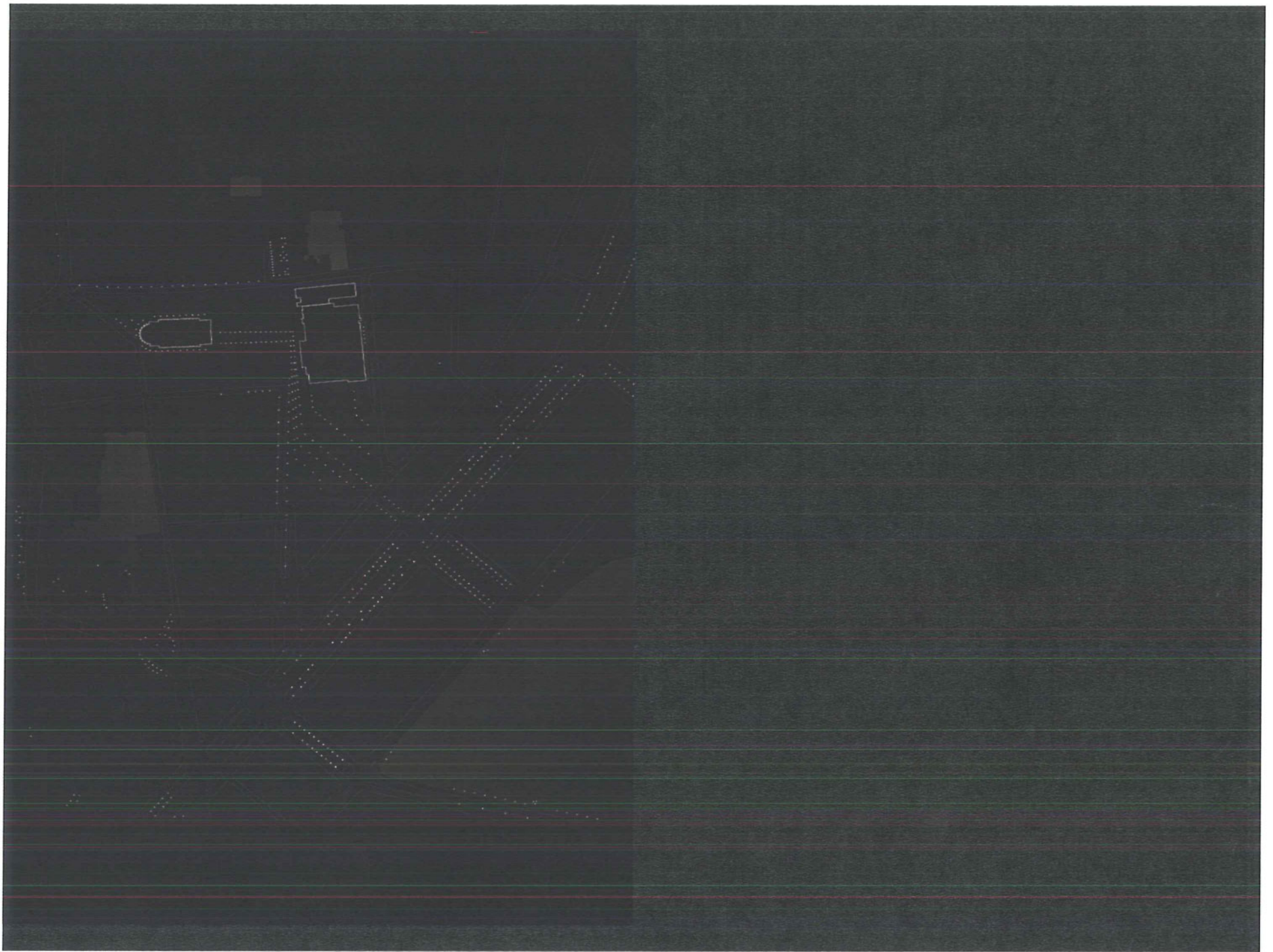
EARLY VOLUMETRIC STUDY

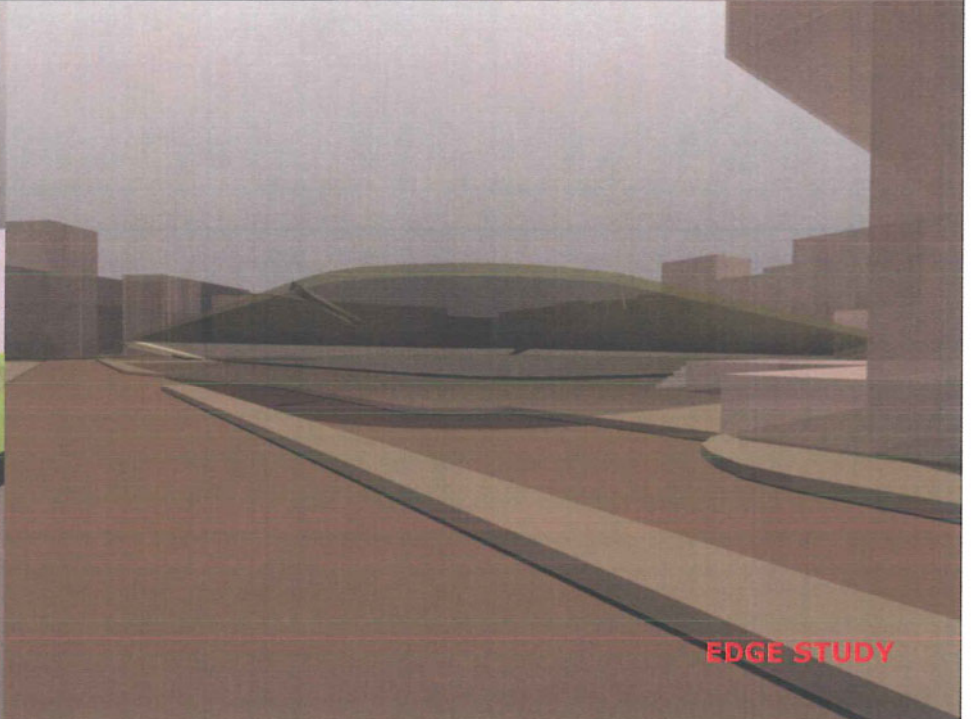
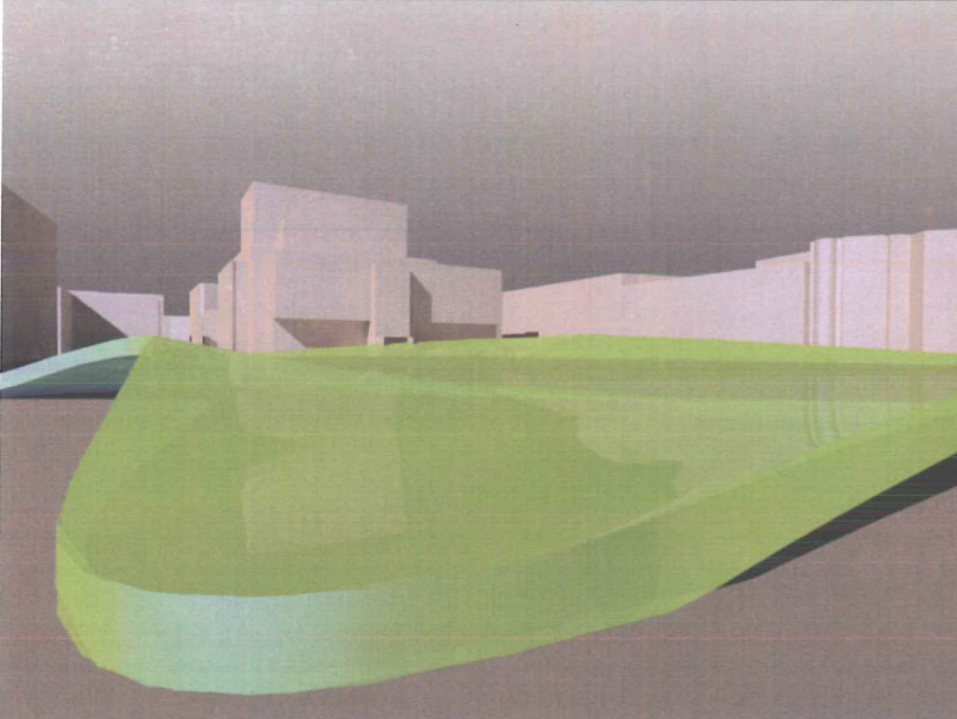
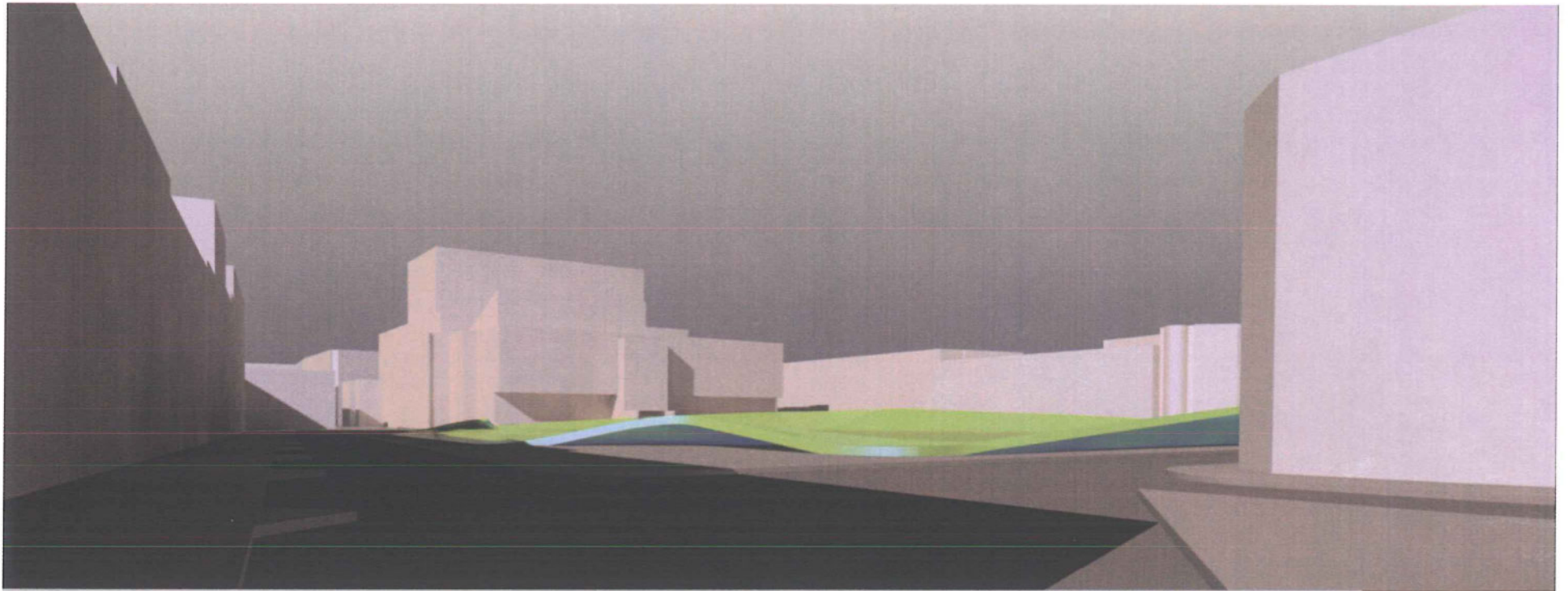


FIELD / VOLUMETRIC STUDY

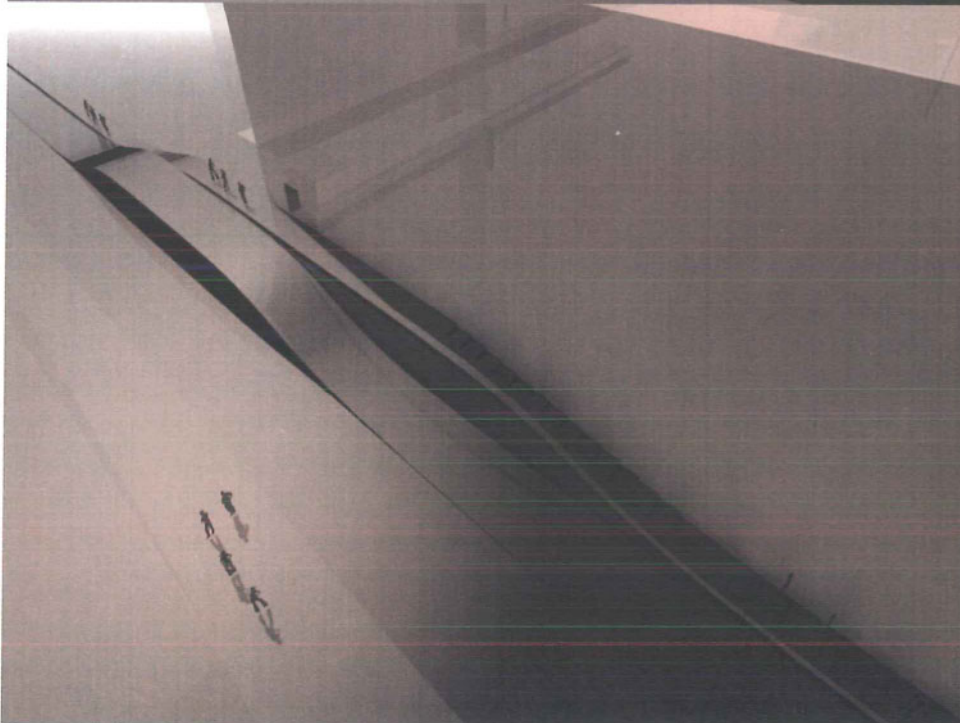
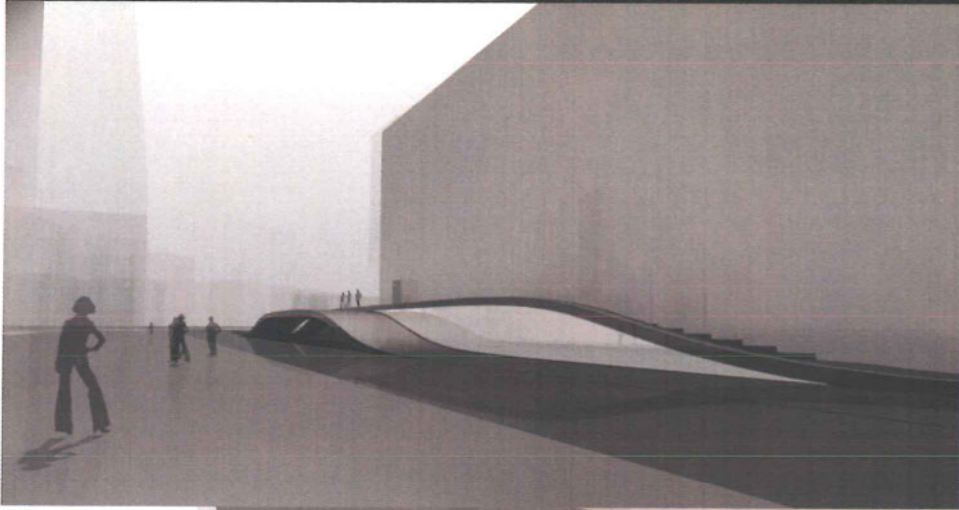


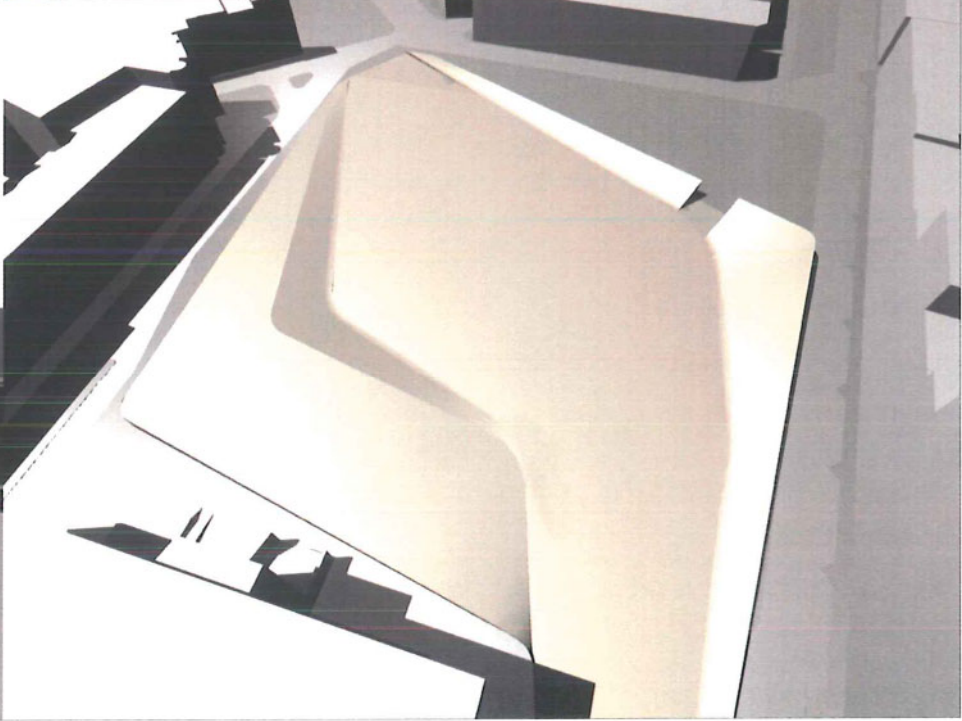
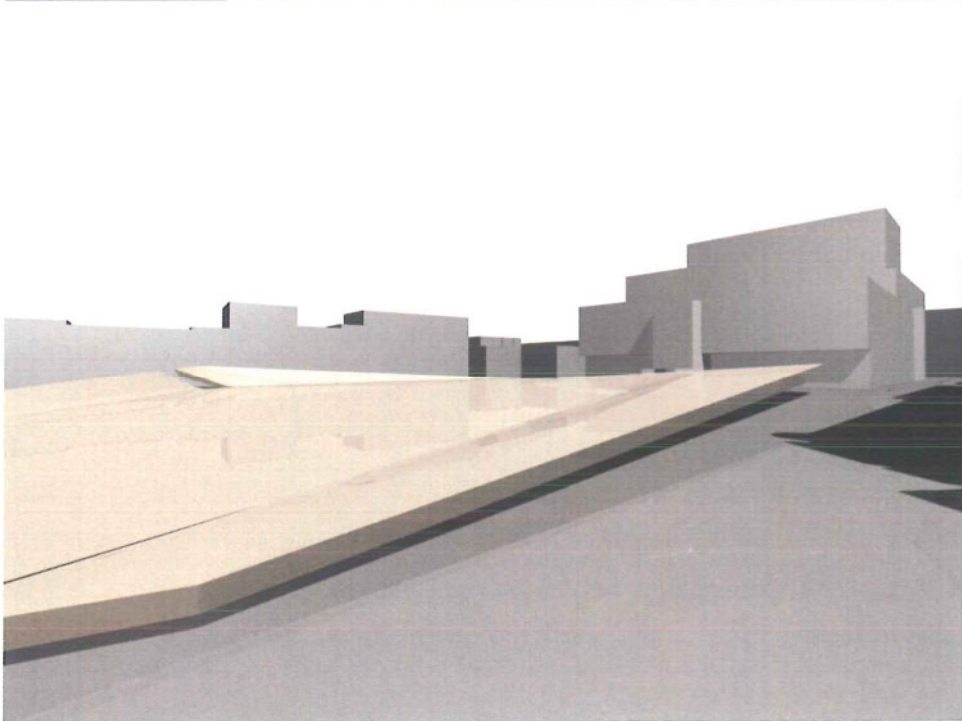
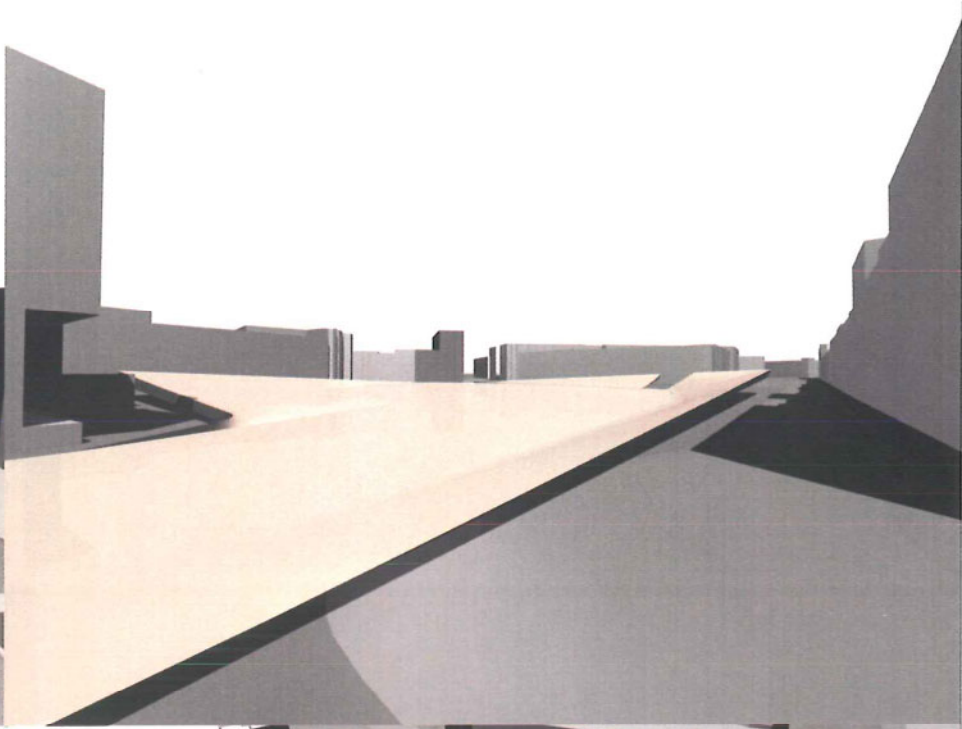
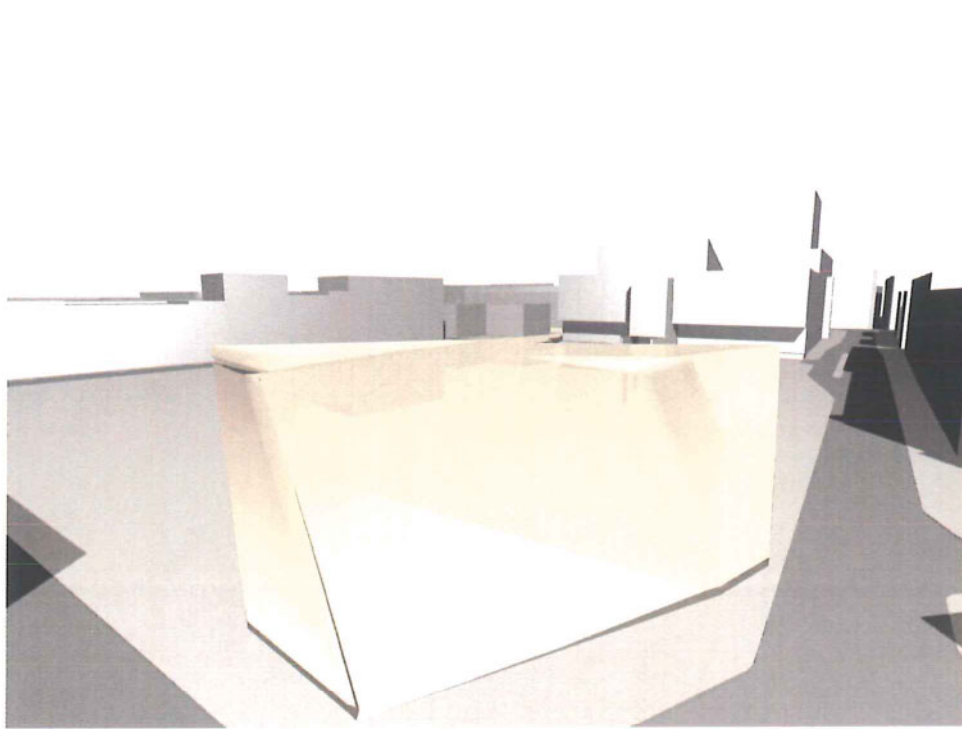


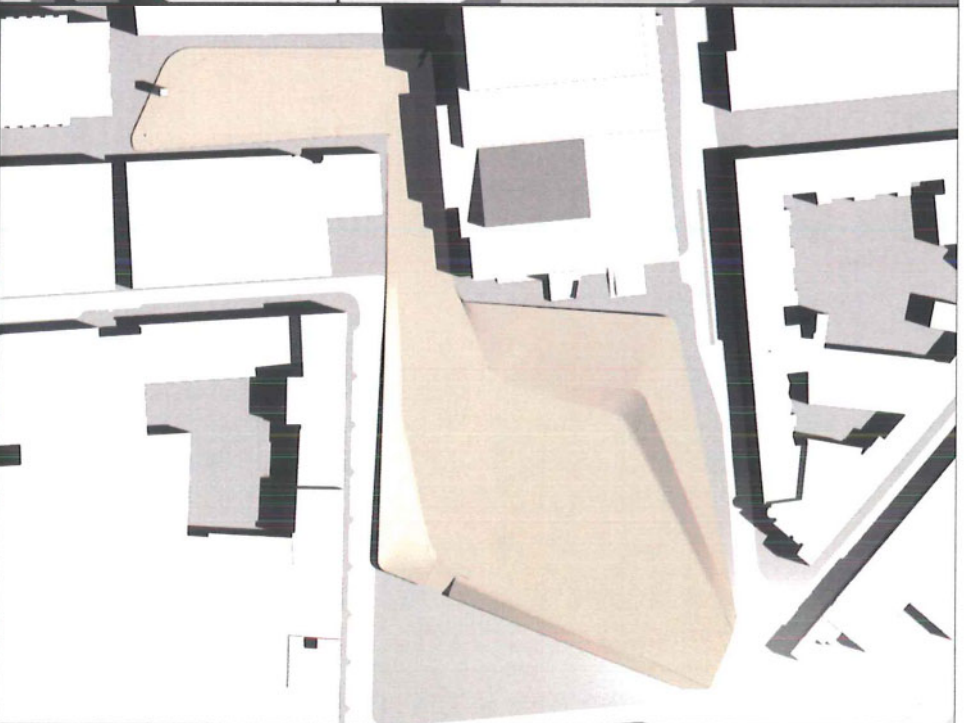
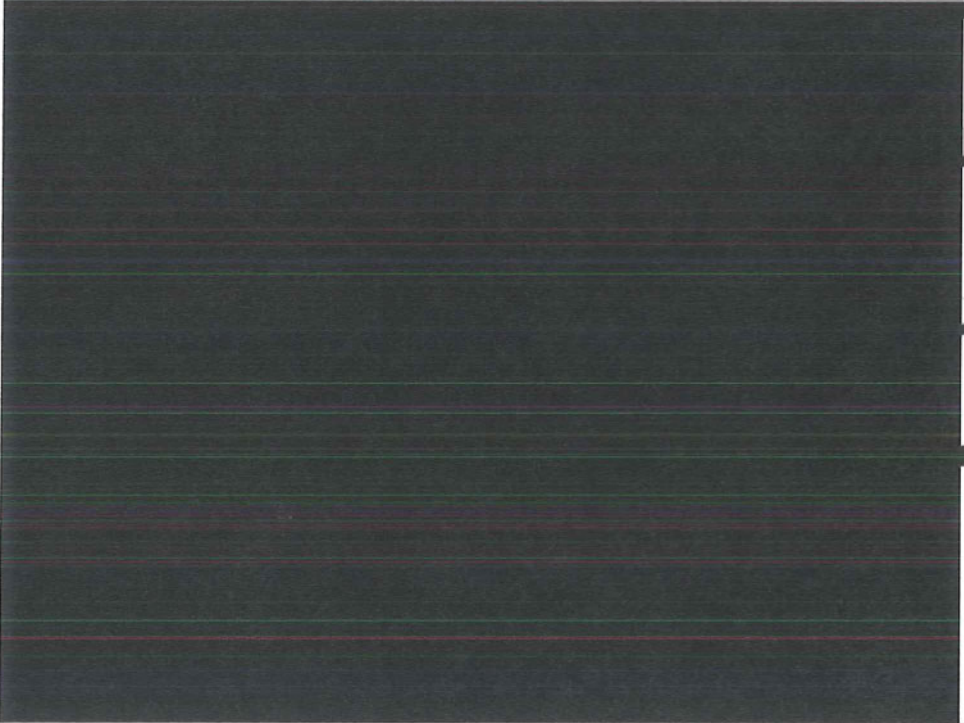
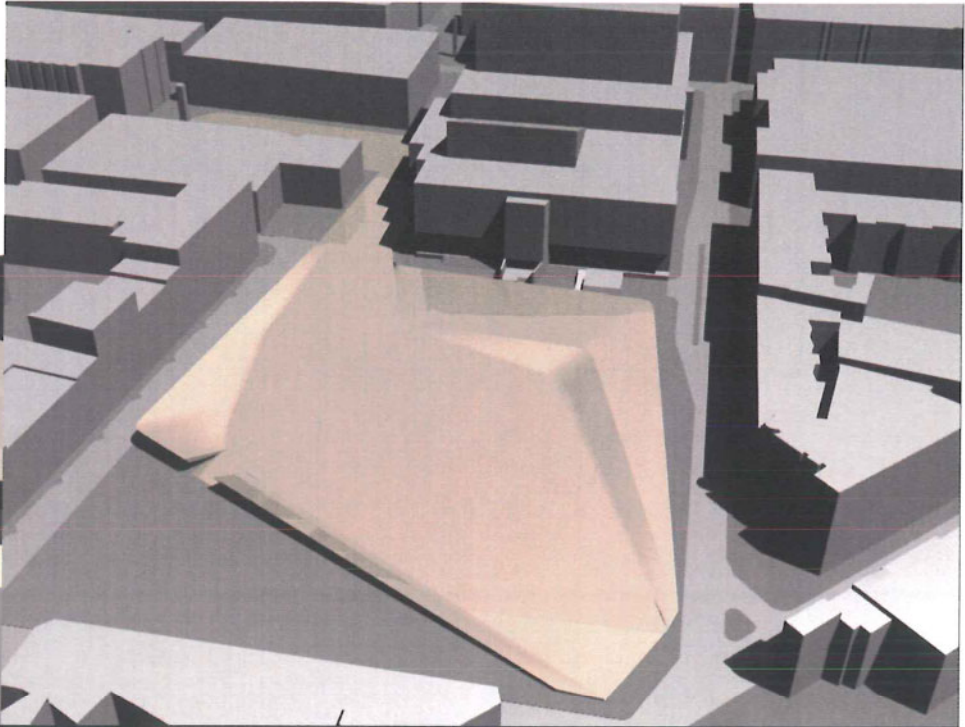
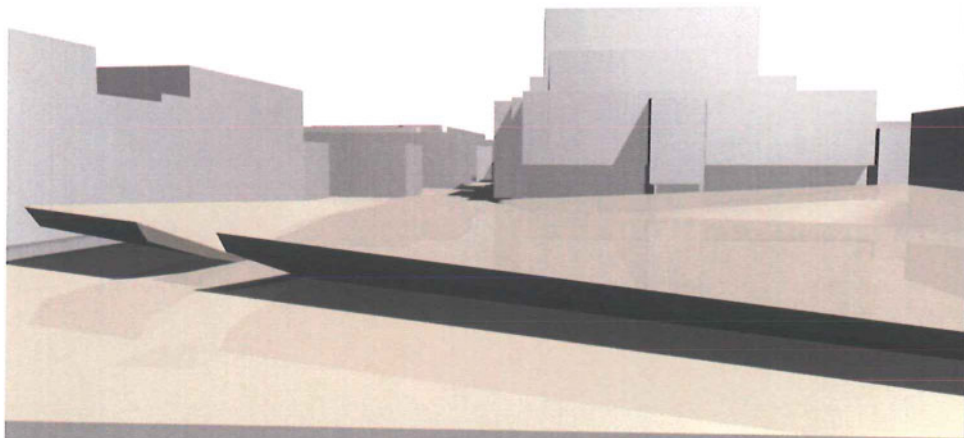


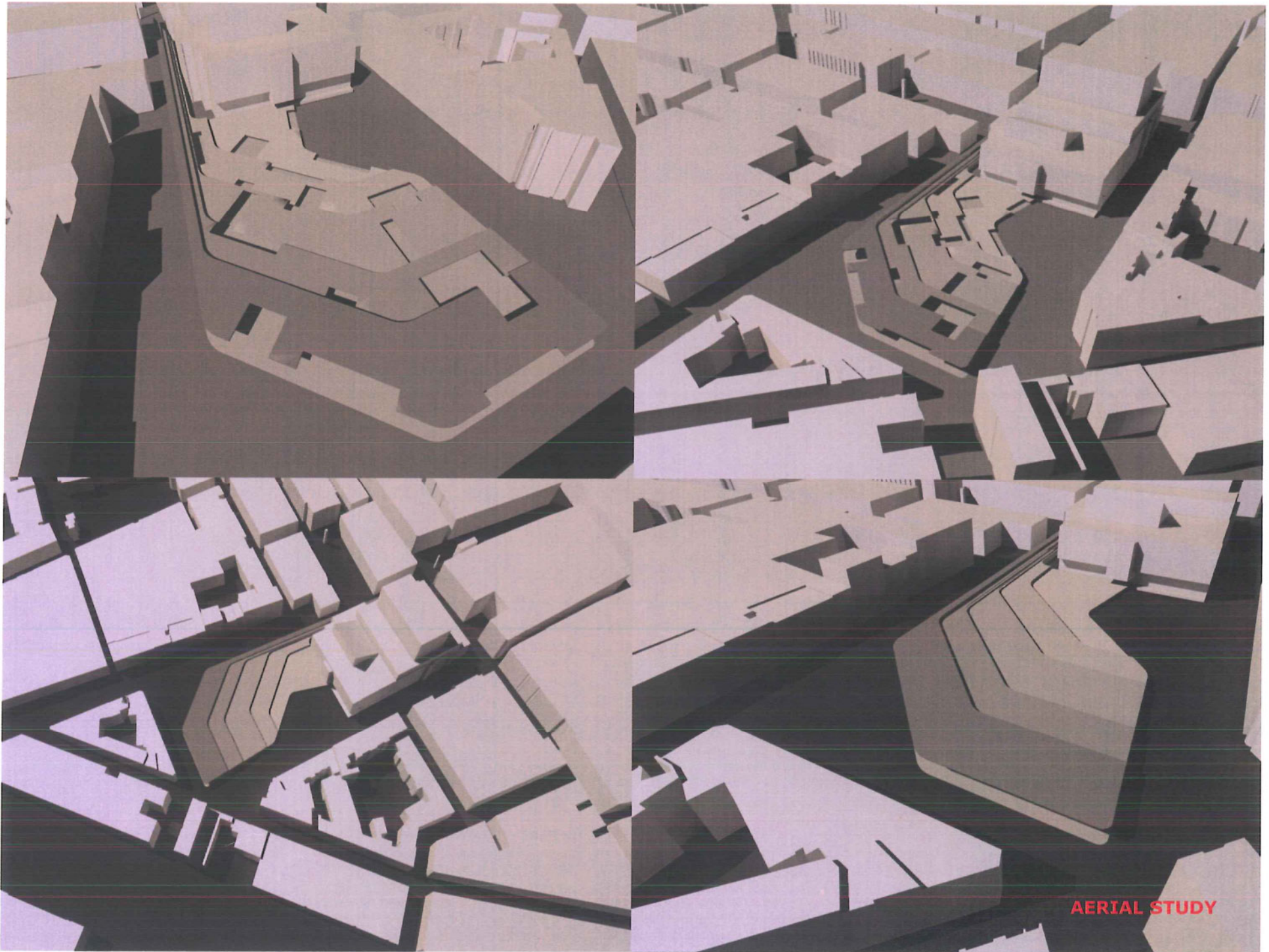


EDGE STUDY

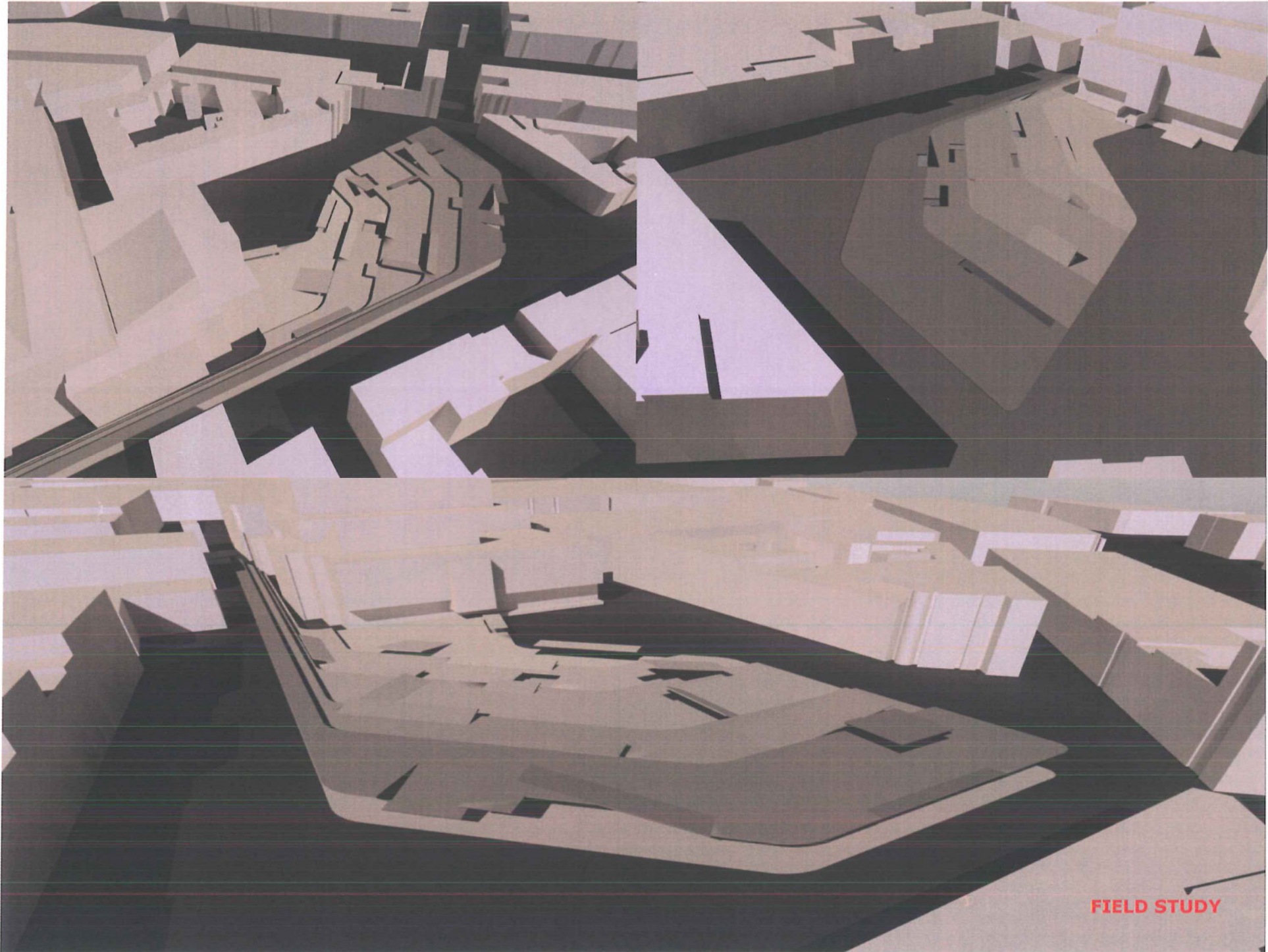








AERIAL STUDY



FIELD STUDY

