

STAUD

PLATFORM VOOR STRATEGIE THEORIE
ARCHITECTUUR URBANISME EN DIALOOG
AKKERLAAN 23 B-2830 WILLEBROEK
t +32 (0)2 757 12 61 f +32 (0)2 757 07 78

ONTWERPTEAM VOOR STAUD:

RAF DE SAEGER, dr.ingeniør, architect

ANN VOETS, kunsthistoricus, landschapsarchitect

BRUNO DEPRÉ, ir.architect

SASKIA WOUTERS, ir.architect

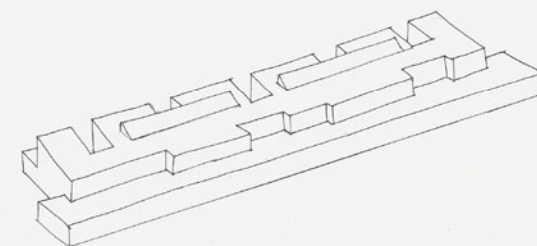
SARAH VERSTRAETE, architect

OPDRACHT:

REF.: open oproep nr. 525 (OPEN OPROEP VLAAMS BOUWMEESTER)

DATUM: 30.03.2004

VOLLEDIGE STUDIEOPDRACHT VOOR DE BOUW VAN 65 NIEUWE SOCIALE WONINGEN **PIJPELHEIDE, BOISCHOT** VOOR DE SOCIALE BOUWMAATSCHAPPIJ ZONNIGE KEMPEN



INLEIDING

situering en context
neutraliteit van het landschap



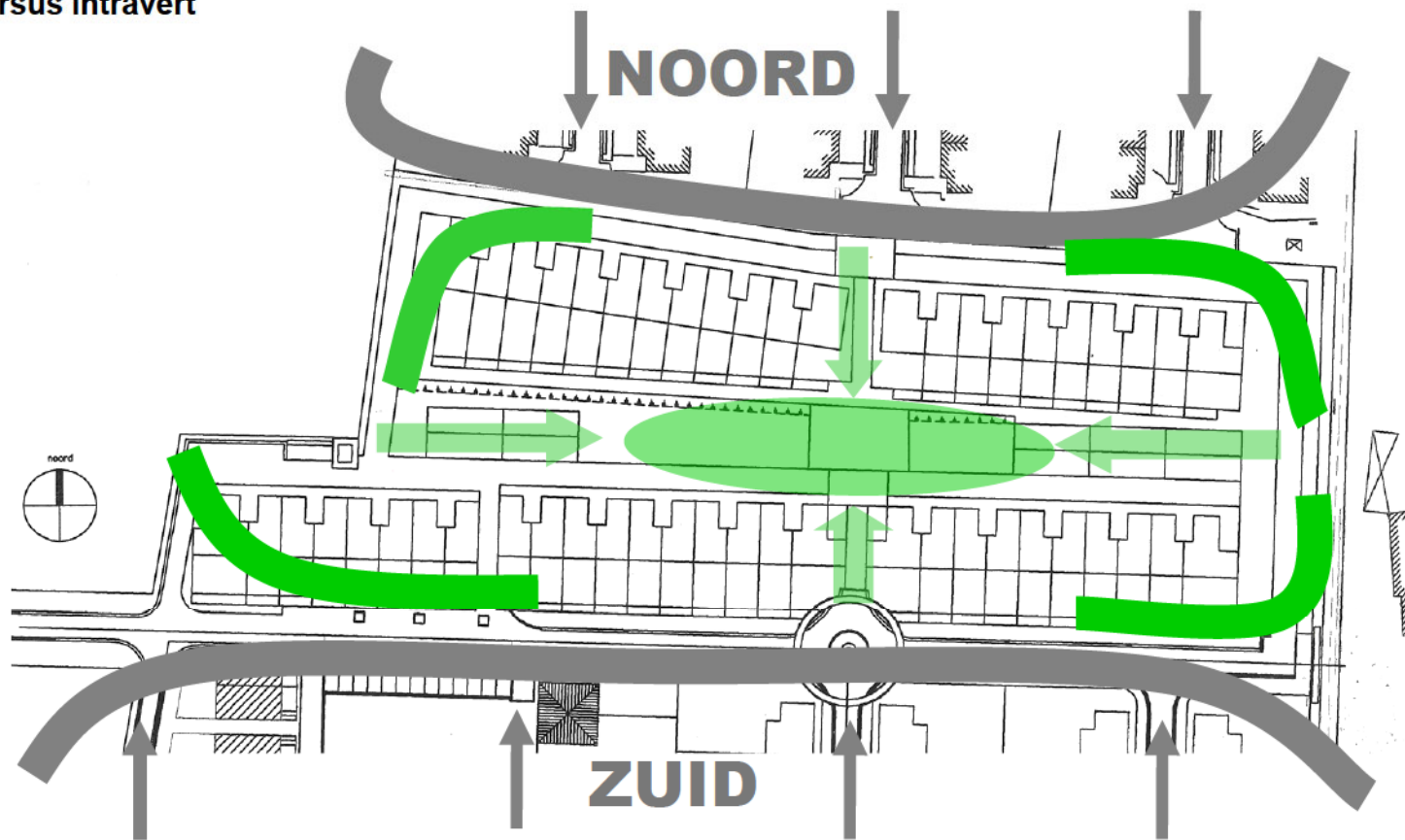
INLEIDING

situering en context
neutraliteit van het landschap



LIGGING

extravert versus intravert

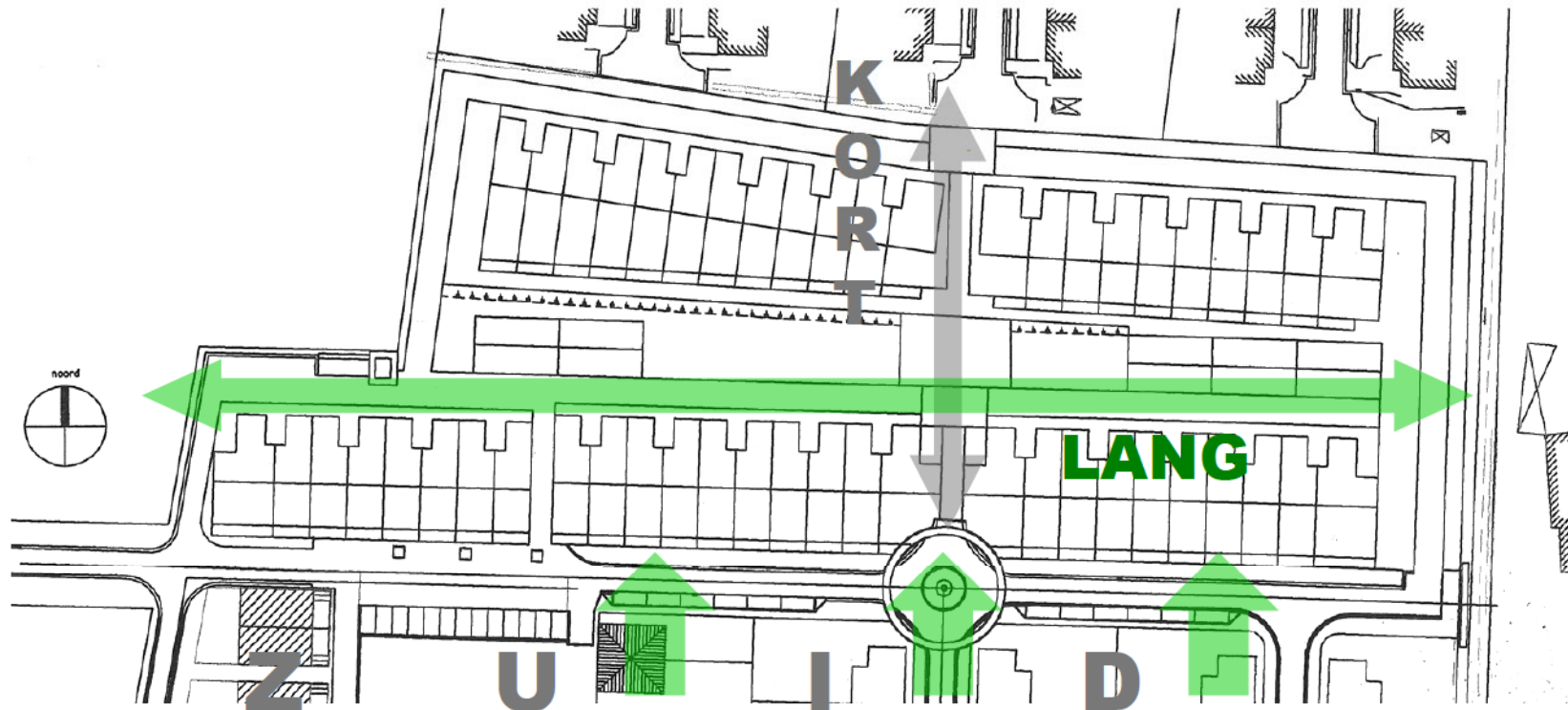


relatie tussen bestaande wijk in aanbouw en ontwerp **HOOG** plateau

relatie bestaande wijk en ontwerp **LAAG** plateau

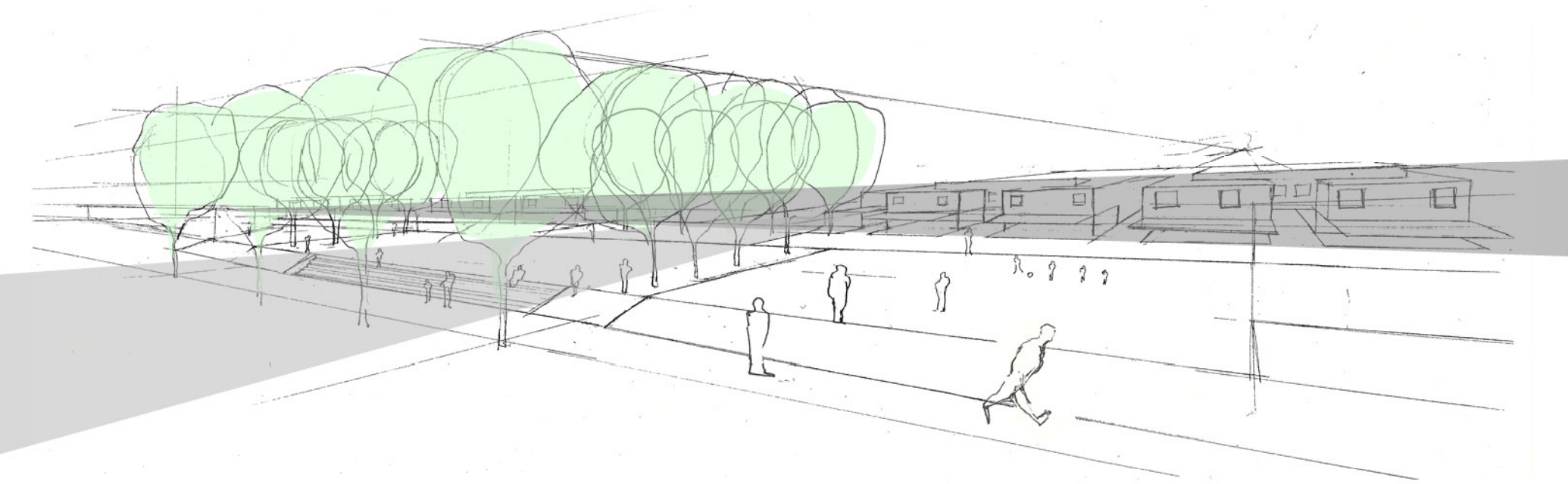
ORIENTATIE

zuid versus noord



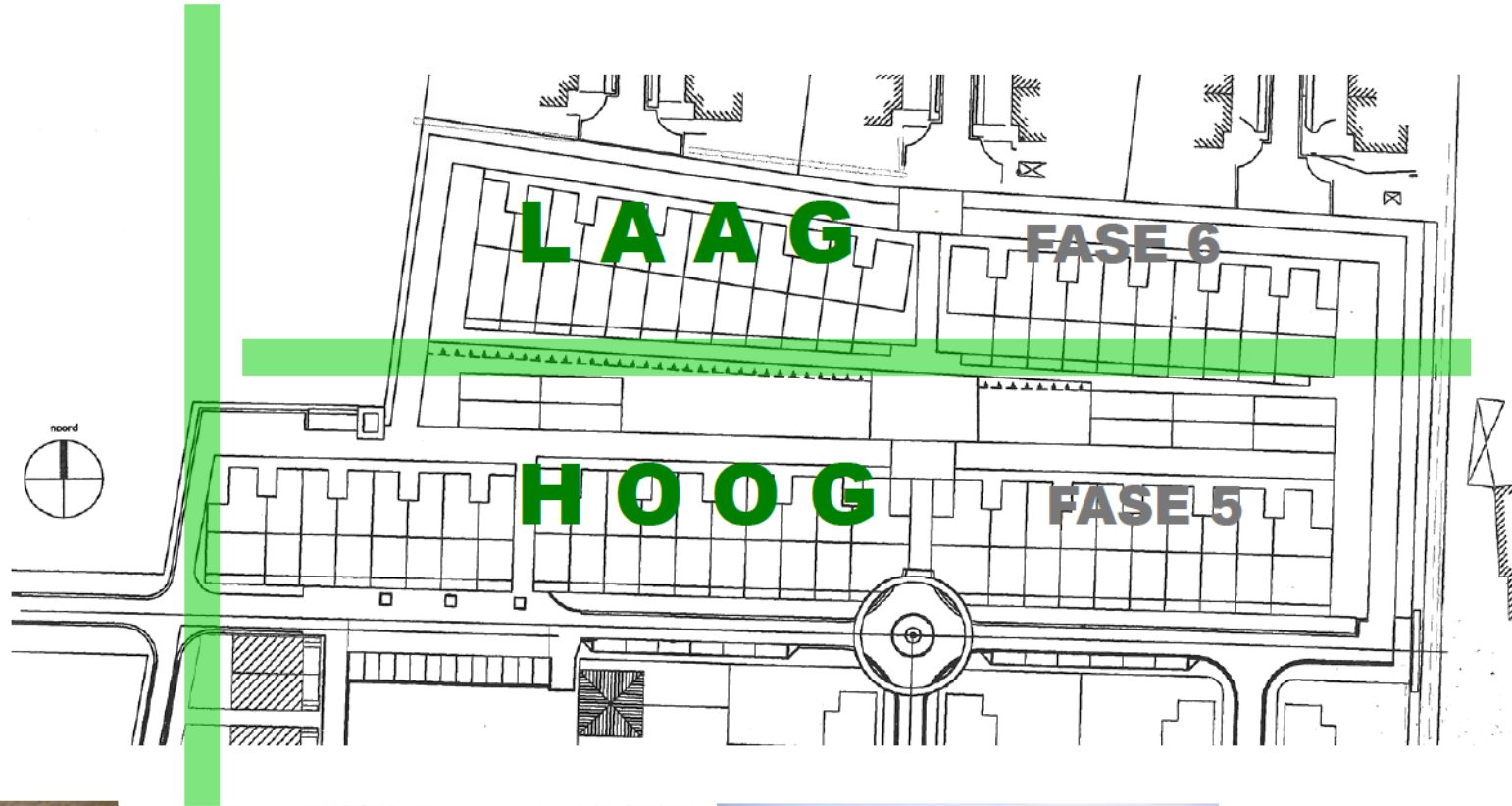
lineariteit van het gebied door de ligging tussen twee bestaande realisaties

lineaire opbouw ontwerp



NIVEAUS

hoog versus laag



zicht vanaf **HOOG** plateau



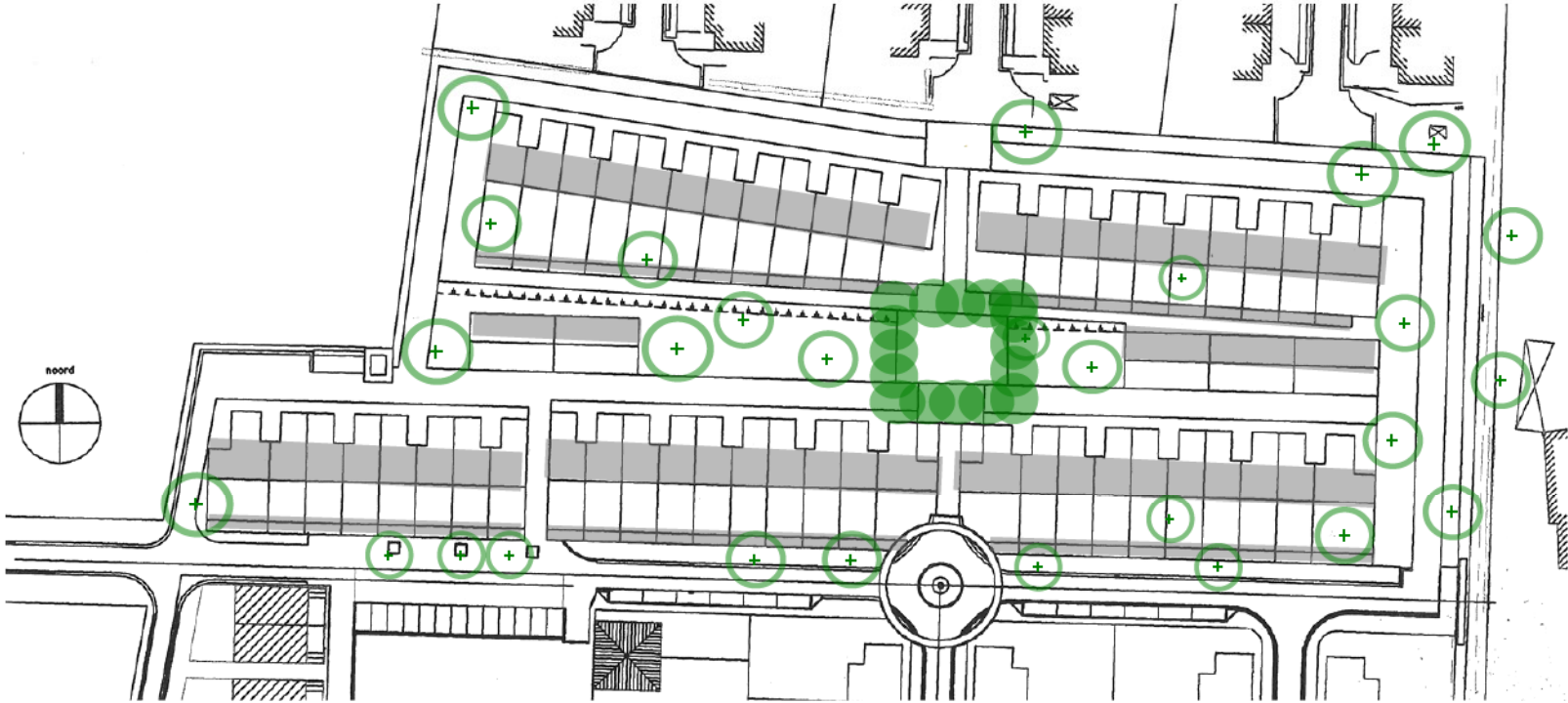
zicht vanaf **LAAG** plateau



grondbalans

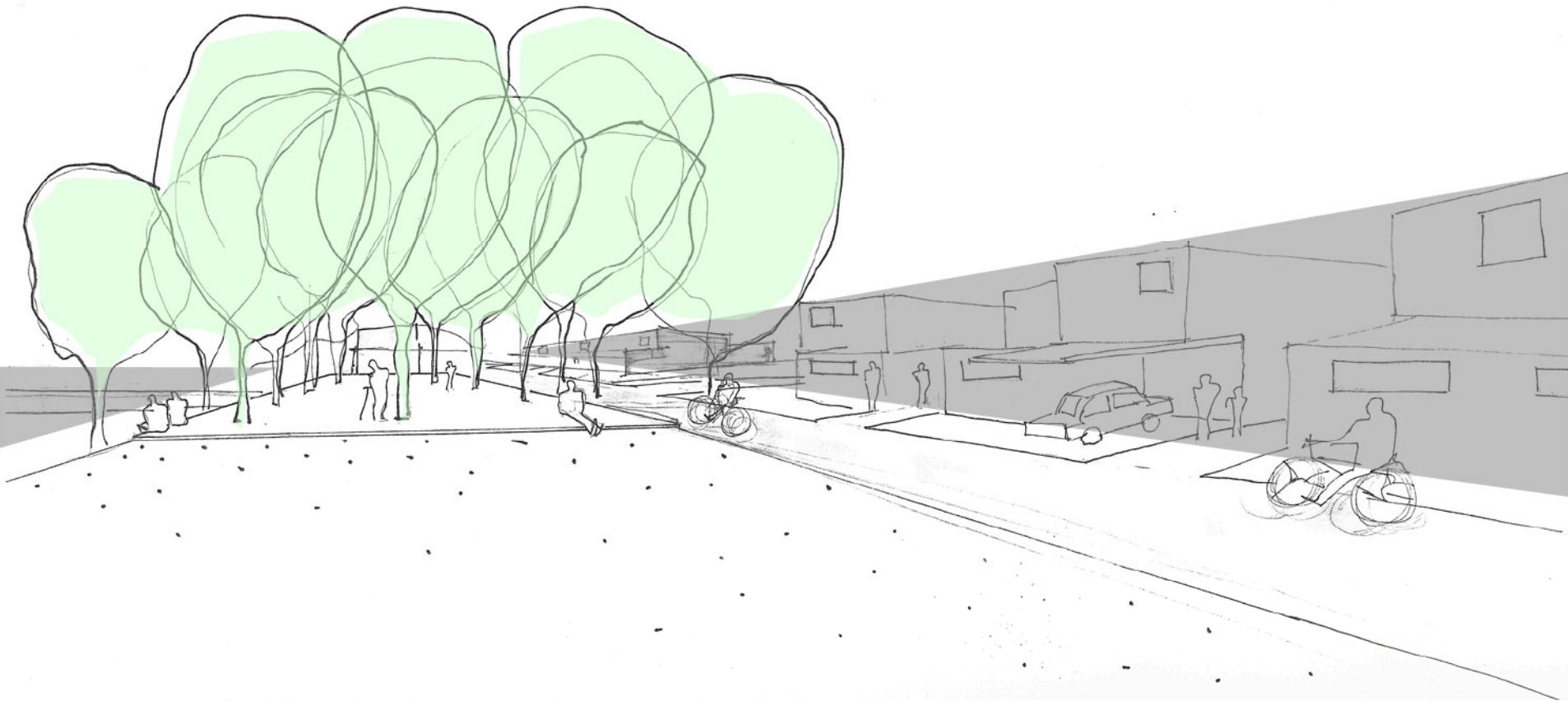
DRAGERS

strak versus speels



DRAGERS

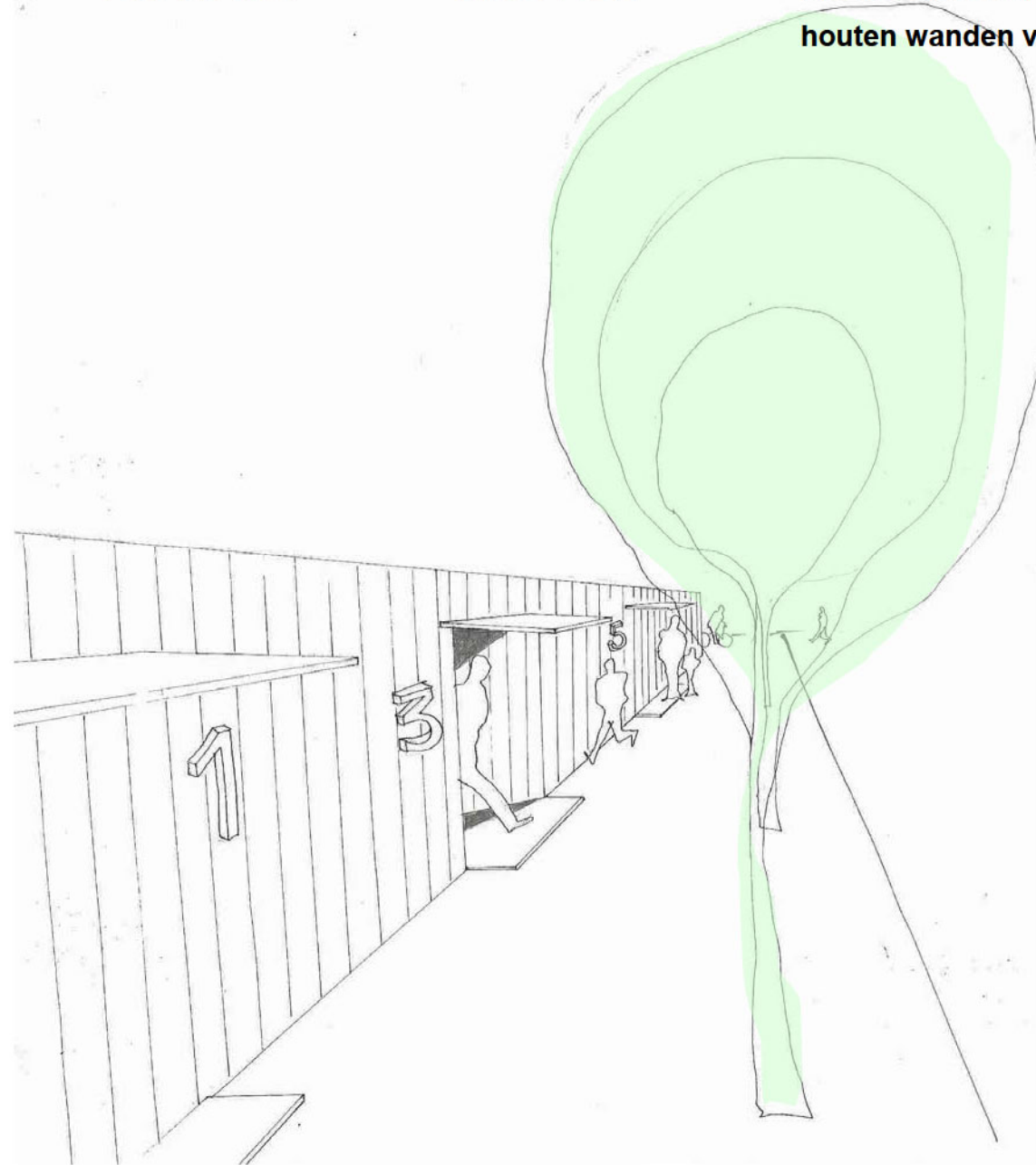
centraal groen element: bomenkader, groene knoop in ontwerp



DRAGERS

STRUCTUUR

lineaire opbouw, parallel met de hoofdrichting
houten wanden van de tuinbergingen



STAUD

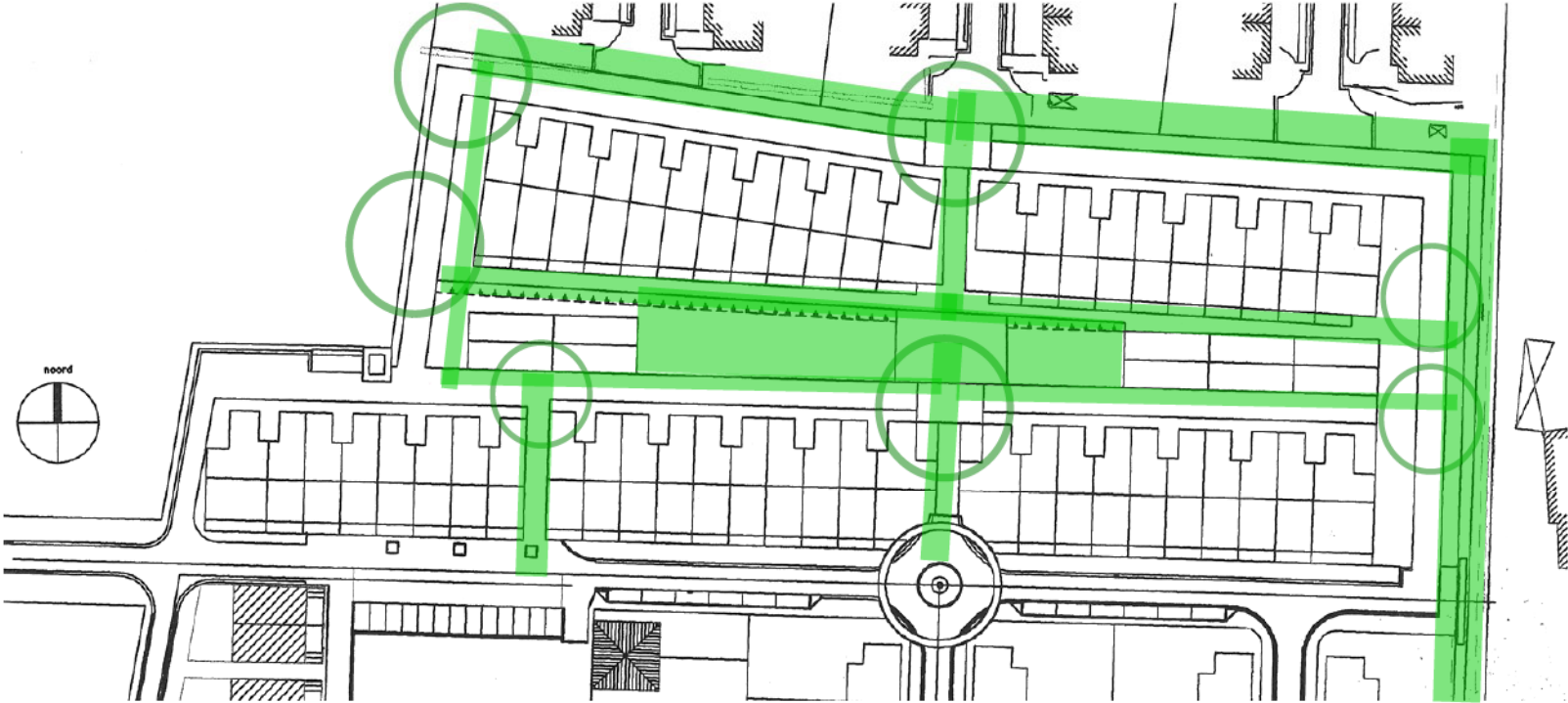
PIJPHELHEIDE, BOOISCHOT



30.03.2004

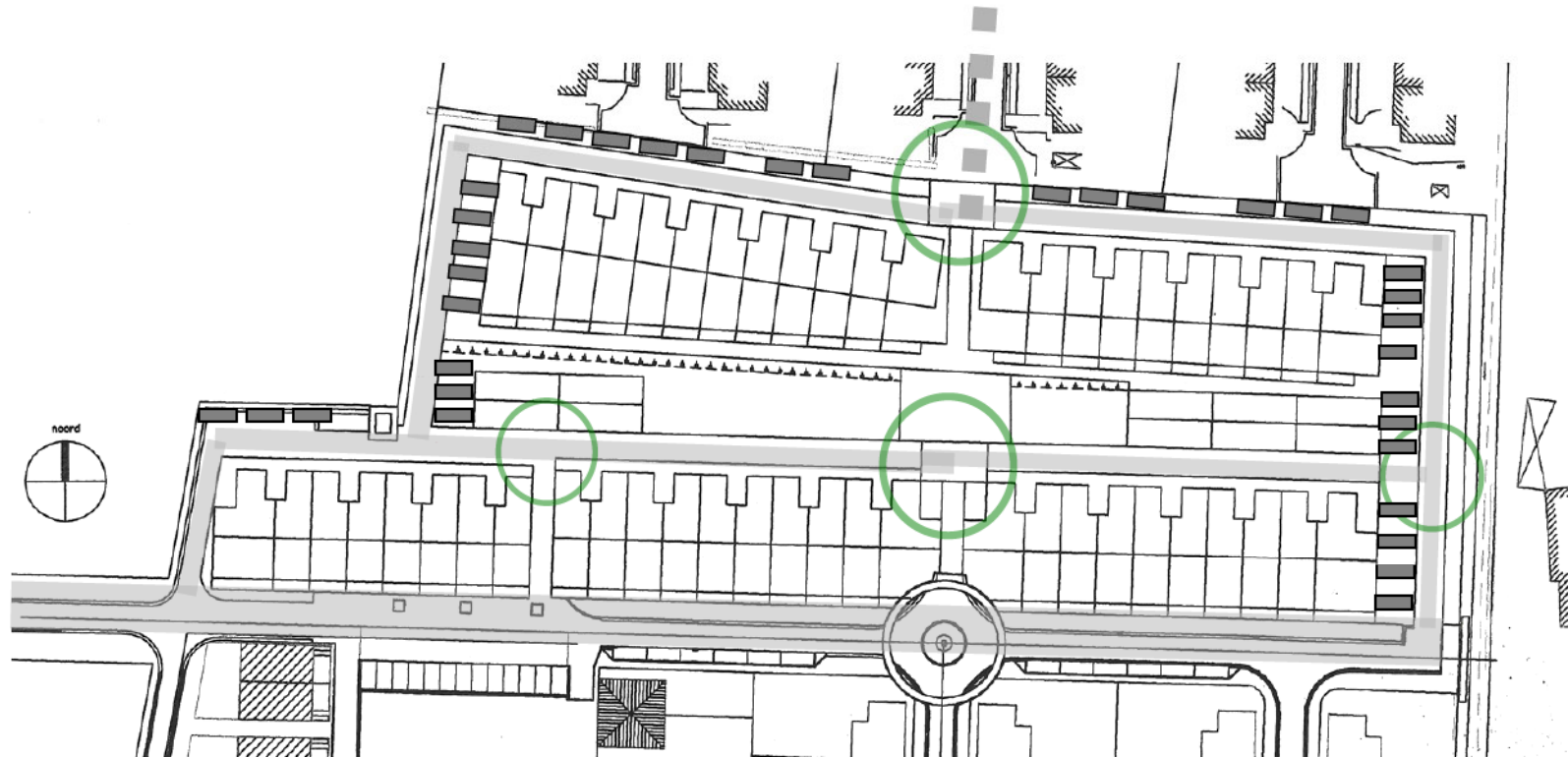
OPENBAAR DOMEIN

hard versus zacht



CIRCULATIE

rijden versus stilstaan



gracht als landschappelijk en functioneel element (afwatering oppervlaktewaters)

ONTWERPSCHETS

ligging

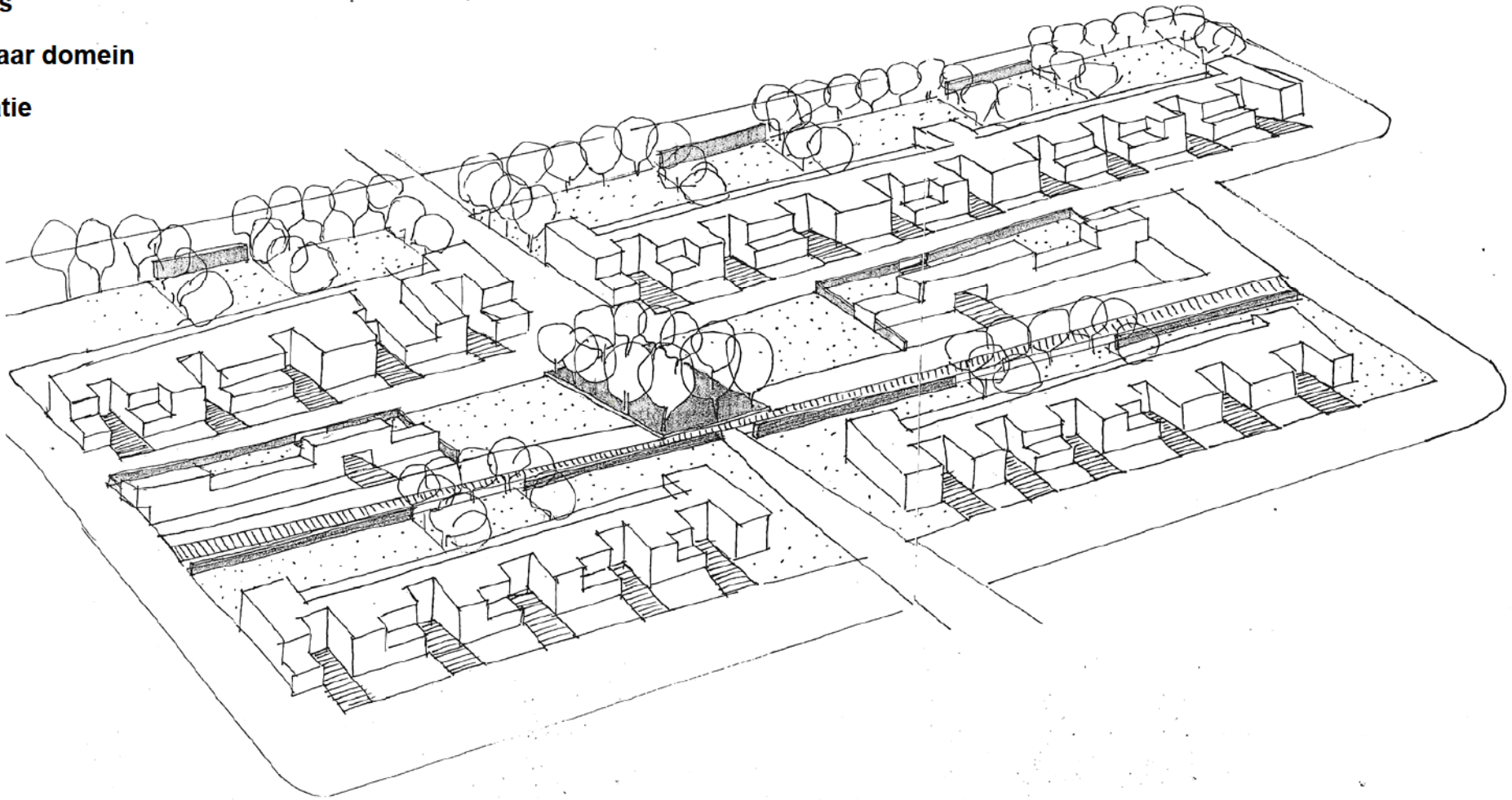
oriëntatie

niveaus




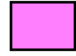
dragers

openbaar domein

circulatie

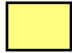





PROGRAMMA VAN EISEN overzicht 65 woongelegenheden

	eengezinswoningen	29
	bejaarden	19
	minder validen	7
	kleine entiteiten	10






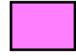
PROGRAMMA VAN EISEN overzicht 65 woongelegenheden

	eengezinswoningen	29
	bejaarden	19
	minder validen	7
	kleine entiteiten	10

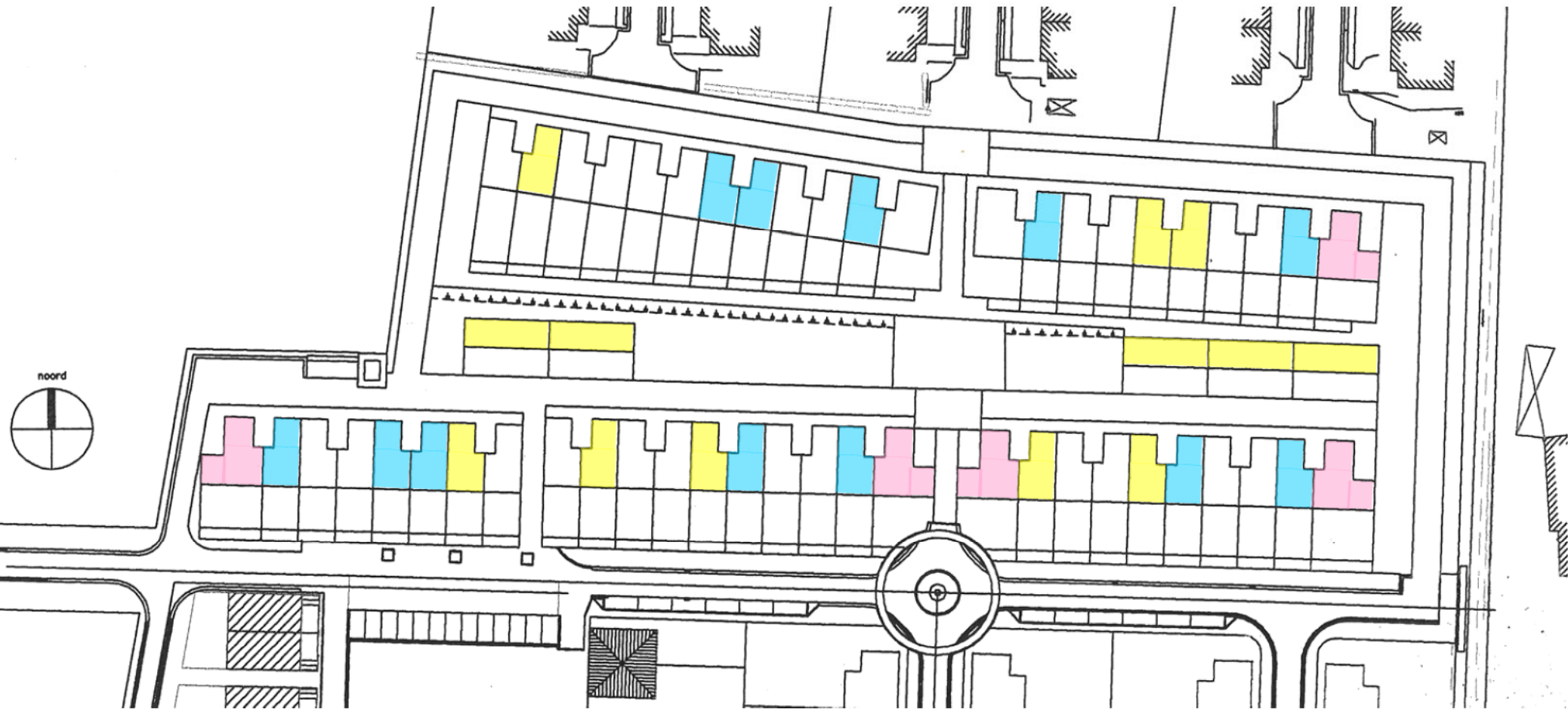
1 SLAAPKAMER 13






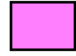
PROGRAMMA VAN EISEN overzicht 65 woongelegenheden

	eengezinswoningen	29
	bejaarden	19
	minder validen	7
	kleine entiteiten	10

2 SLAAPKAMERS 30



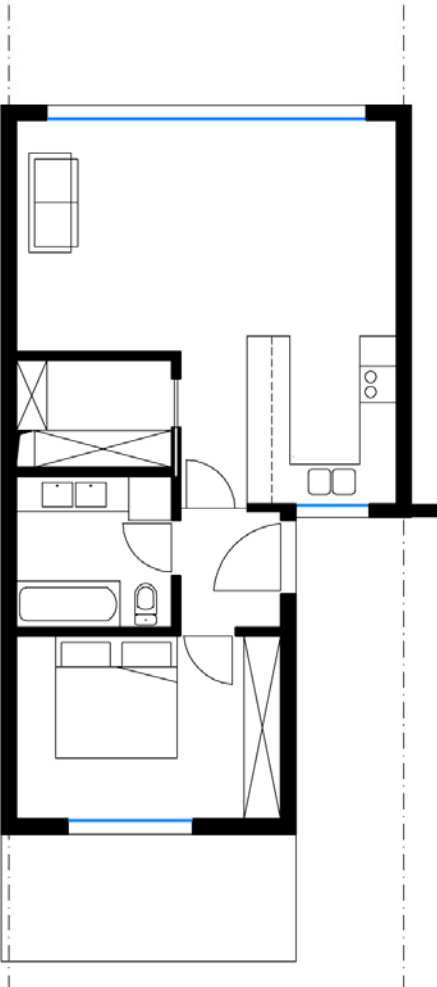
PROGRAMMA VAN EISEN overzicht 65 woongelegenheden

	eengezinswoningen	29
	bejaarden	19
	minder validen	7
	kleine entiteiten	10

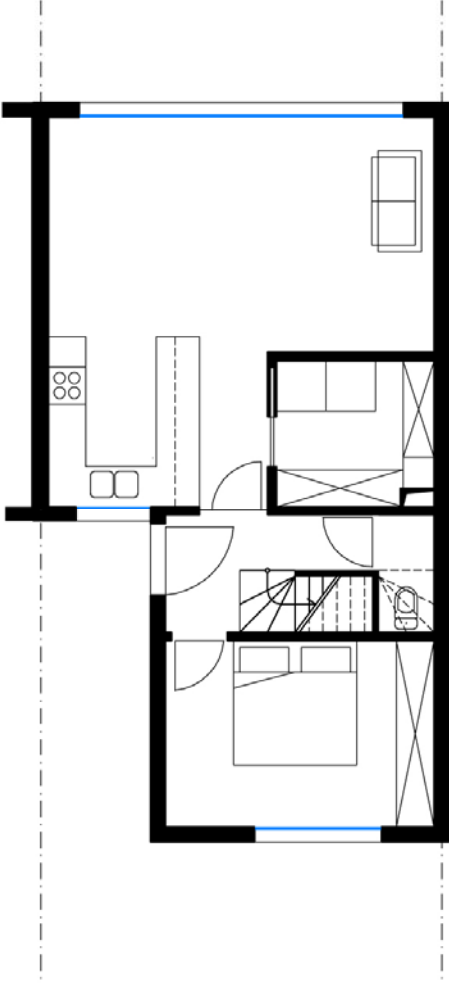
3 SLAAPKAMERS 22



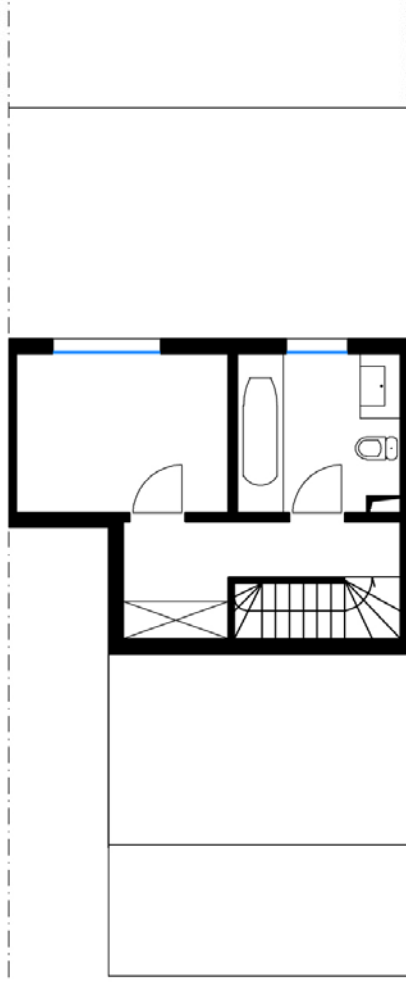
PROGRAMMA VAN EISEN typewoningen eengezinswoningen - bejaarden



1/2- 62m² 0

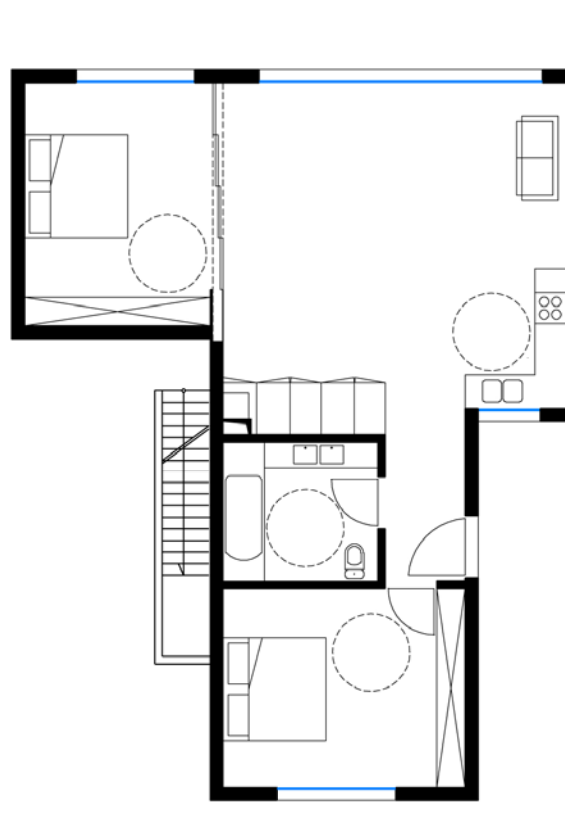


2/3- 87m² 0

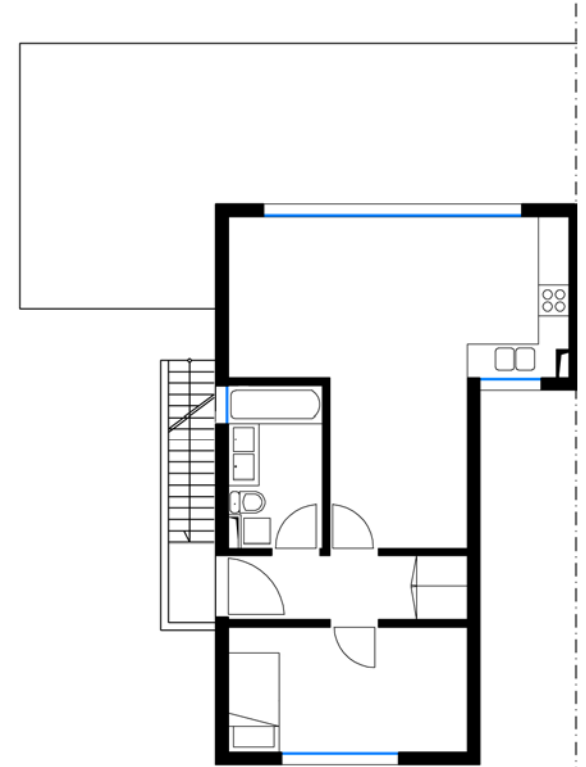


2/3- 87m² 1

PROGRAMMA VAN EISEN typewoningen minder validen – kleine entiteiten

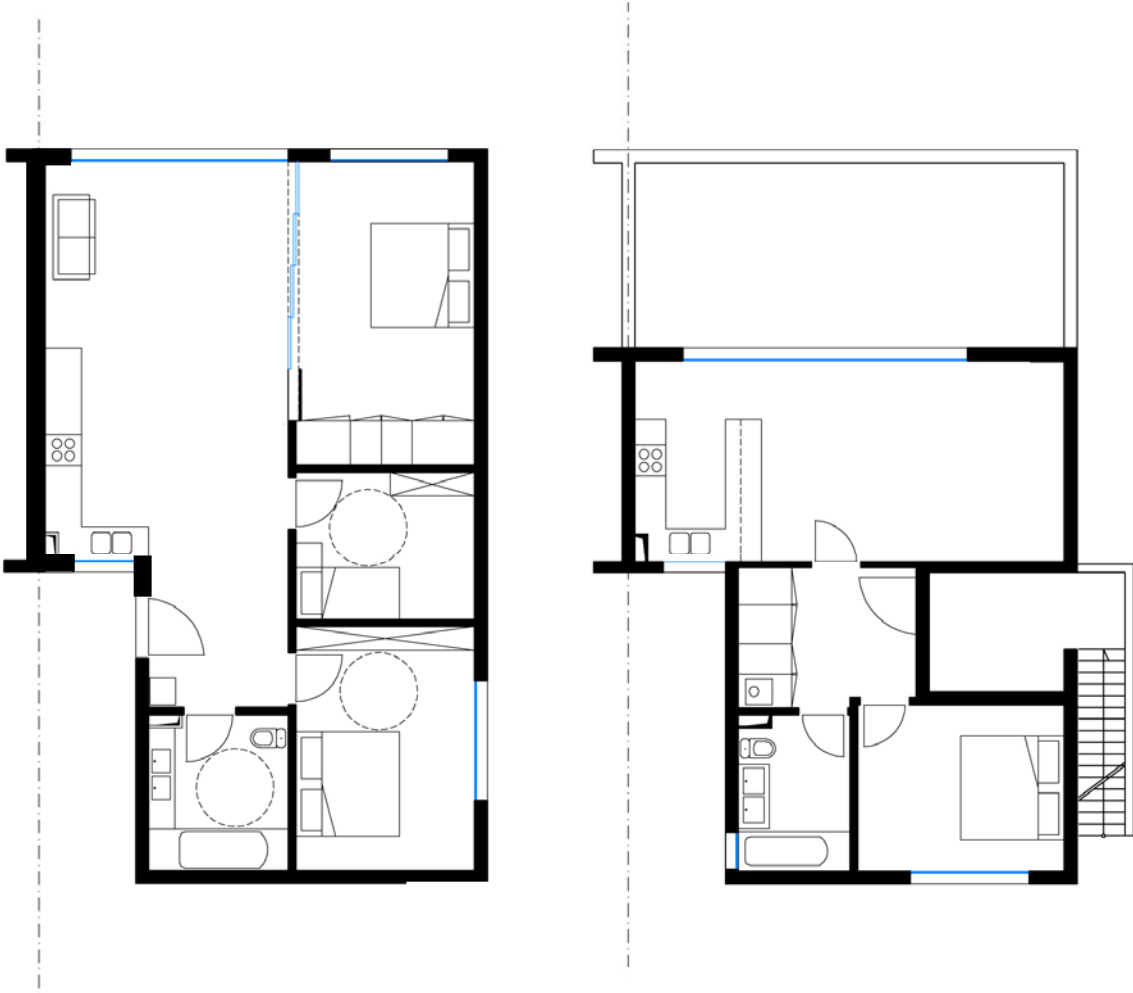


2/4- 101m² 0



2/4- 101m² 1

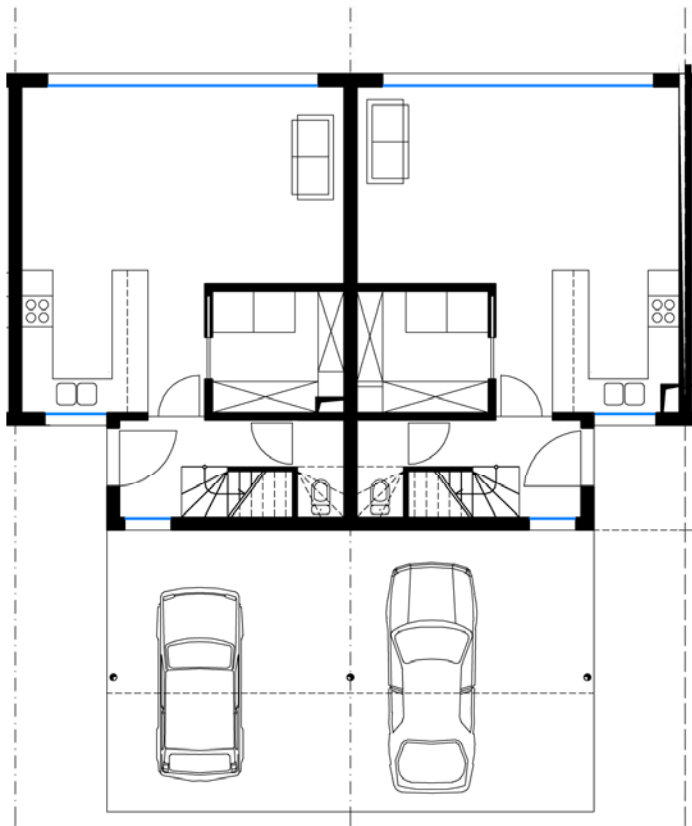
PROGRAMMA VAN EISEN typewoningen minder validen – kleine entiteiten



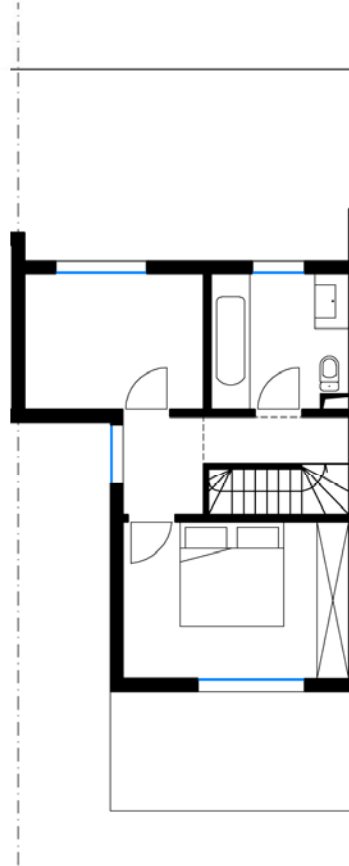
3/4- 105m² 0

3/4- 105m² 1

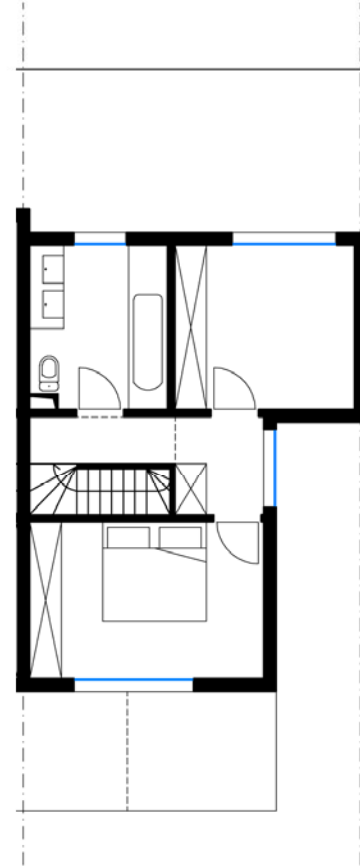
PROGRAMMA VAN EISEN typewoningen eengezinswoningen - bejaarden



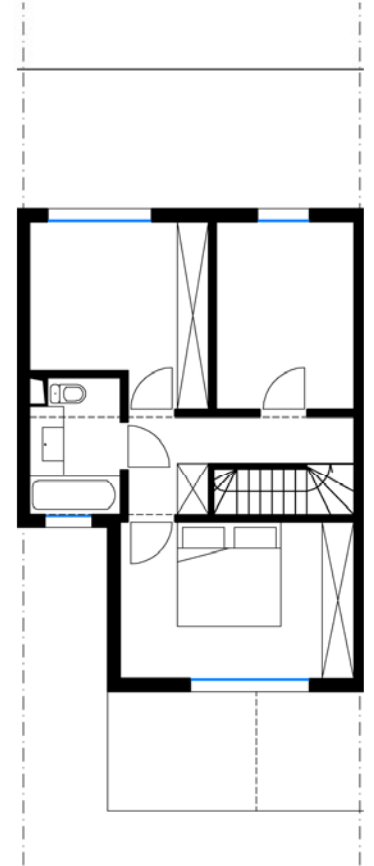
type 0



2/3- 87m² 1

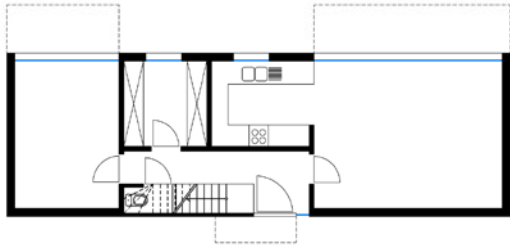


2/4- 91m² 1



3/4- 108m² 1

PROGRAMMA VAN EISEN typewoningen eengezinswoningen



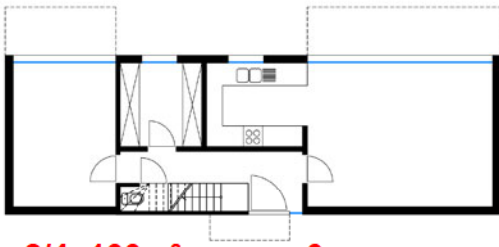
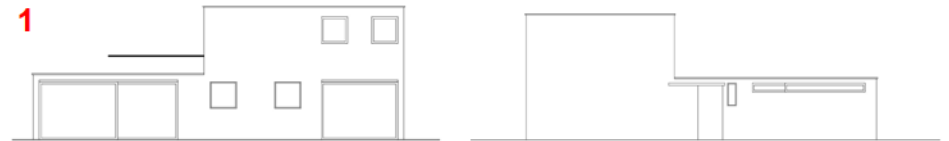
2/3- 88m²

0



2/3- 88m²

1



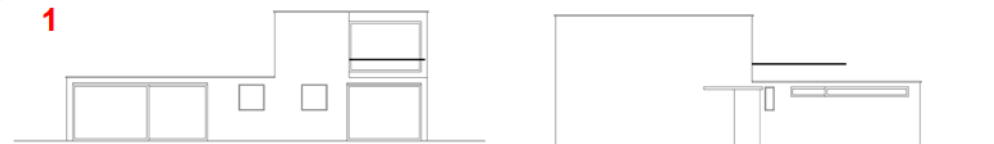
2/4- 100m²

0

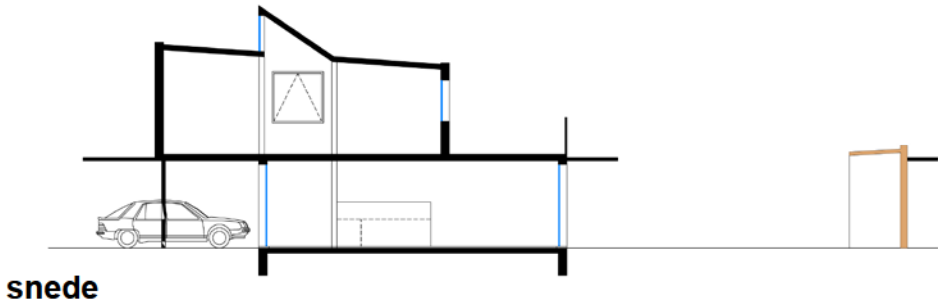


2/4- 100m²

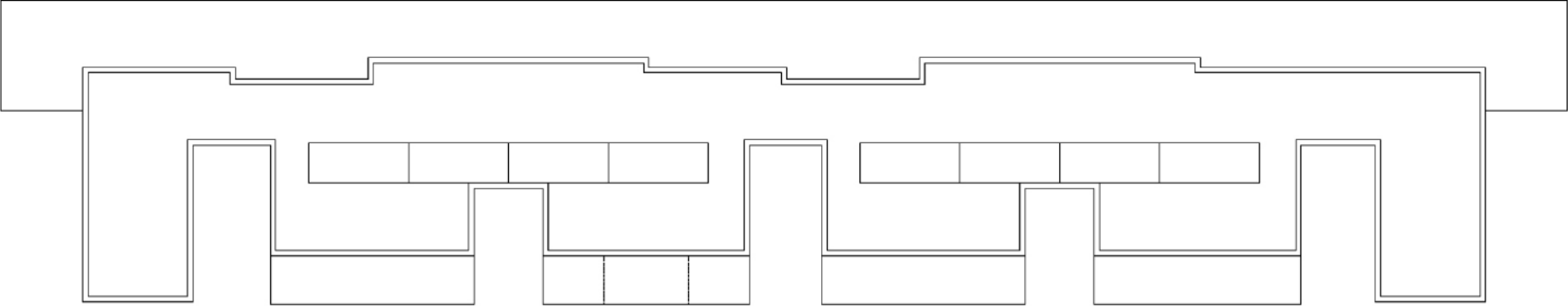
1



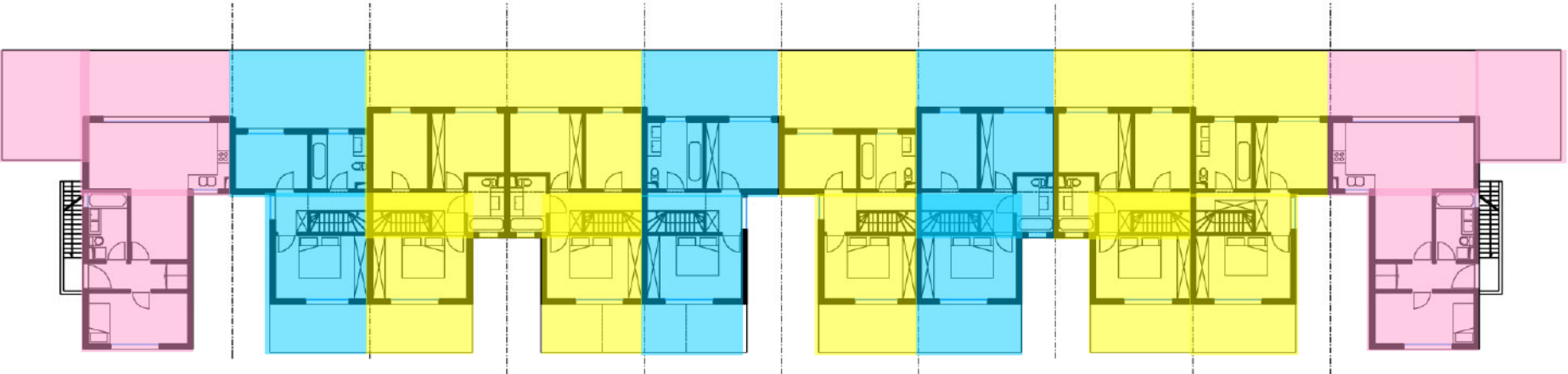
planoverzicht



planoverzicht

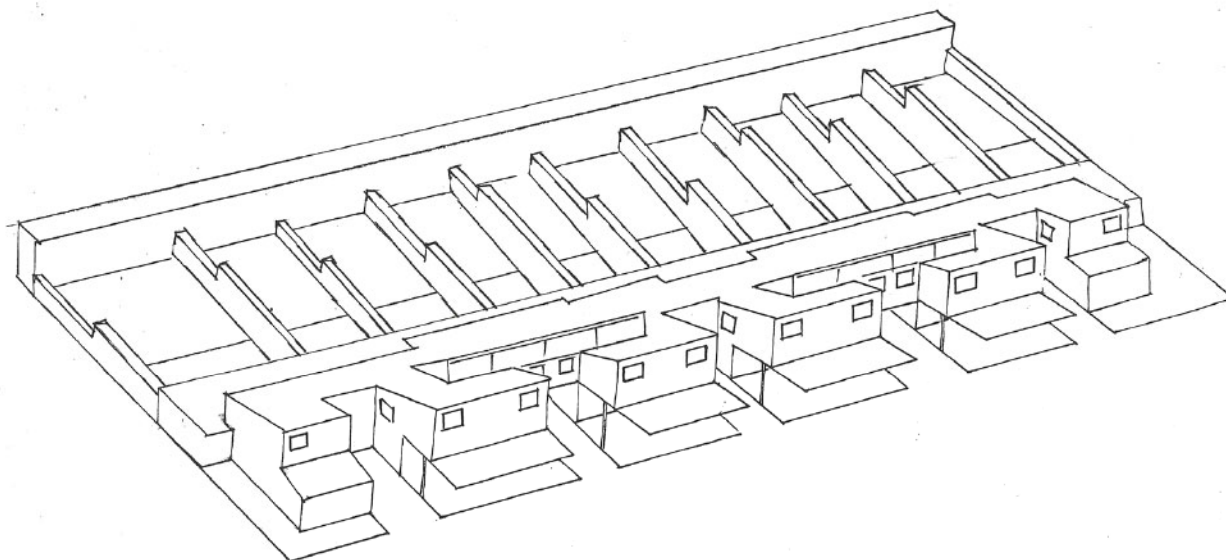
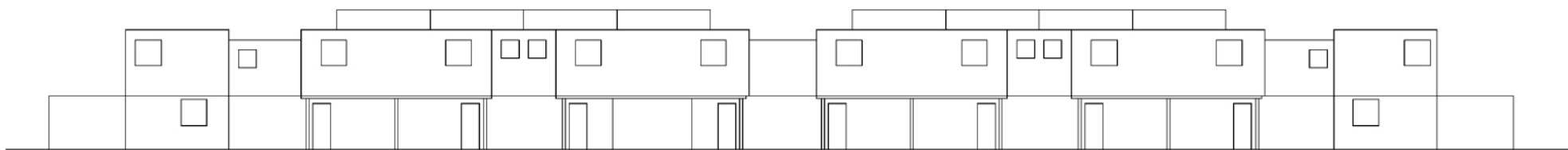


dak



verdiep

voorgevel noord



achtergevel zuid

