



Z u u r s t o f v o o r d e B r u g s e P o o r t

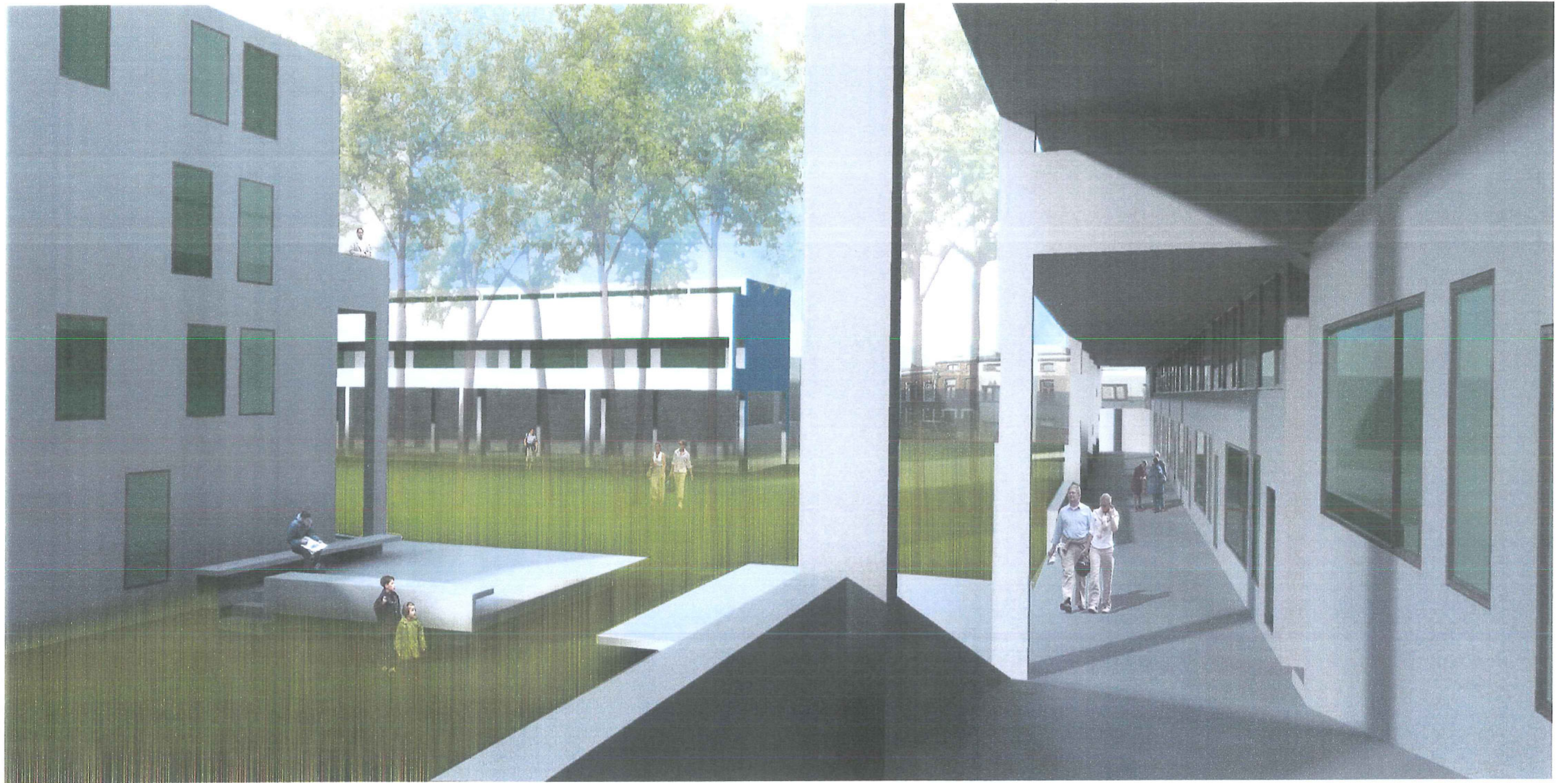
P r o j e c t ' A c a c i a p a r k '



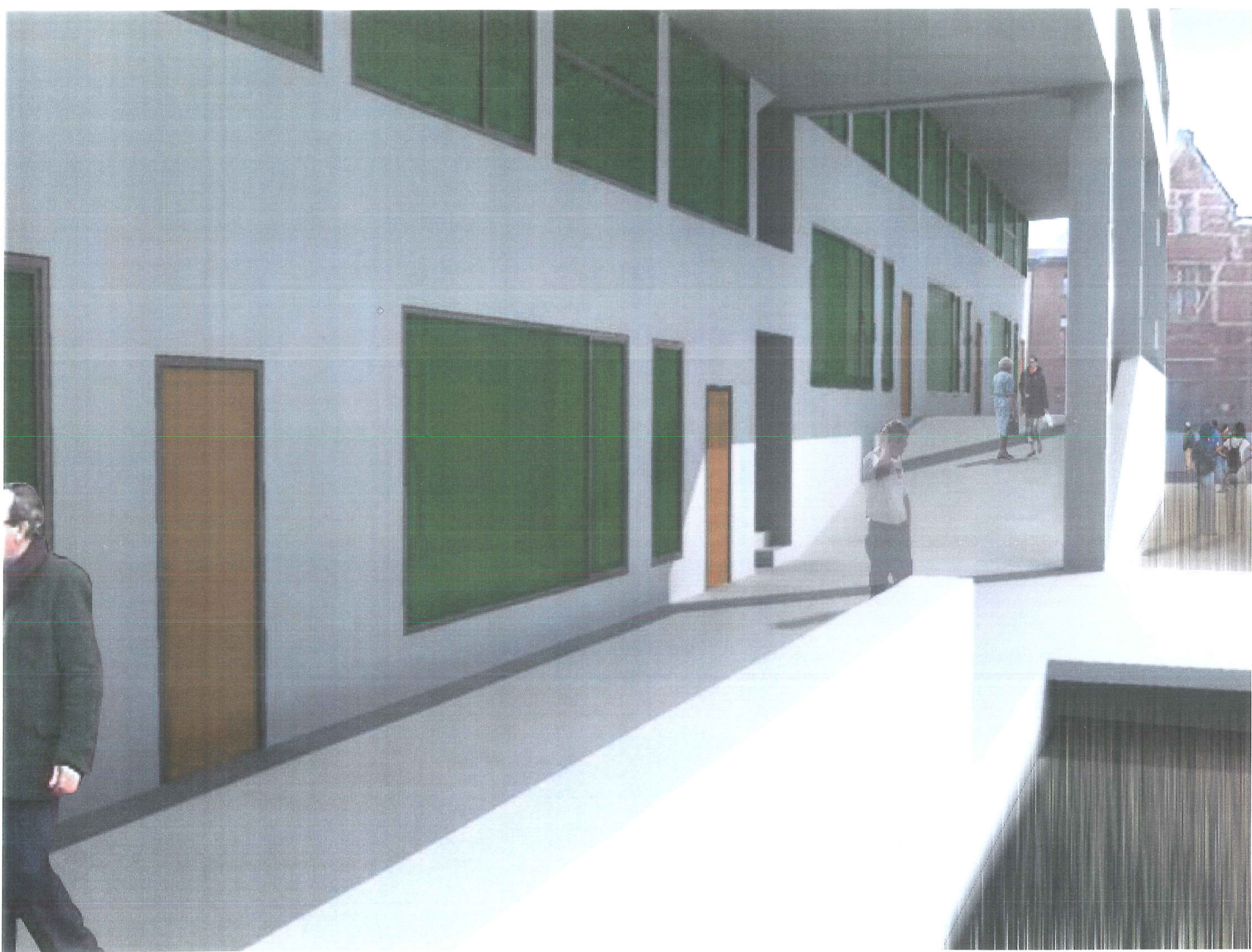












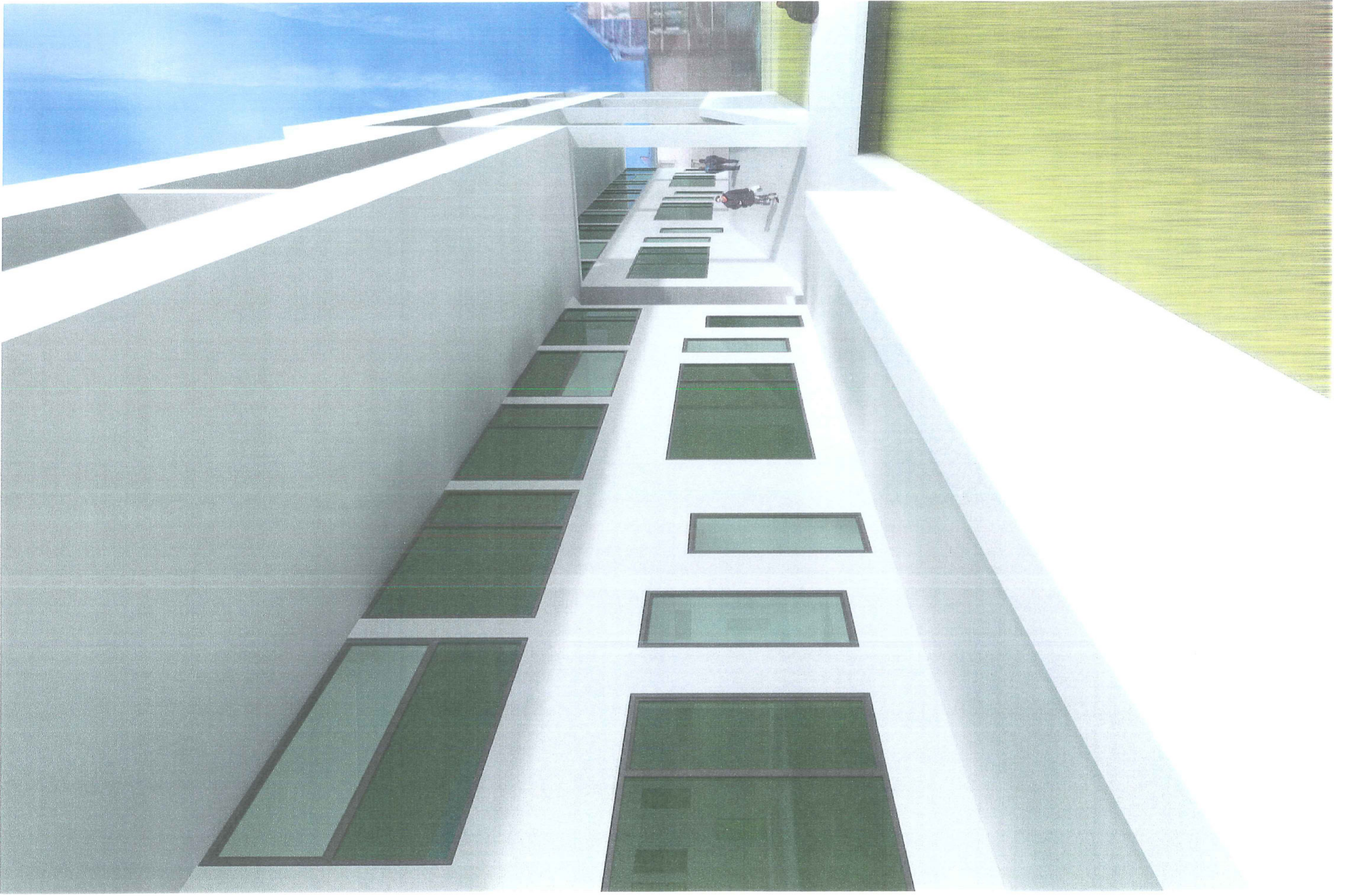




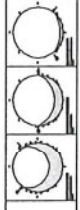
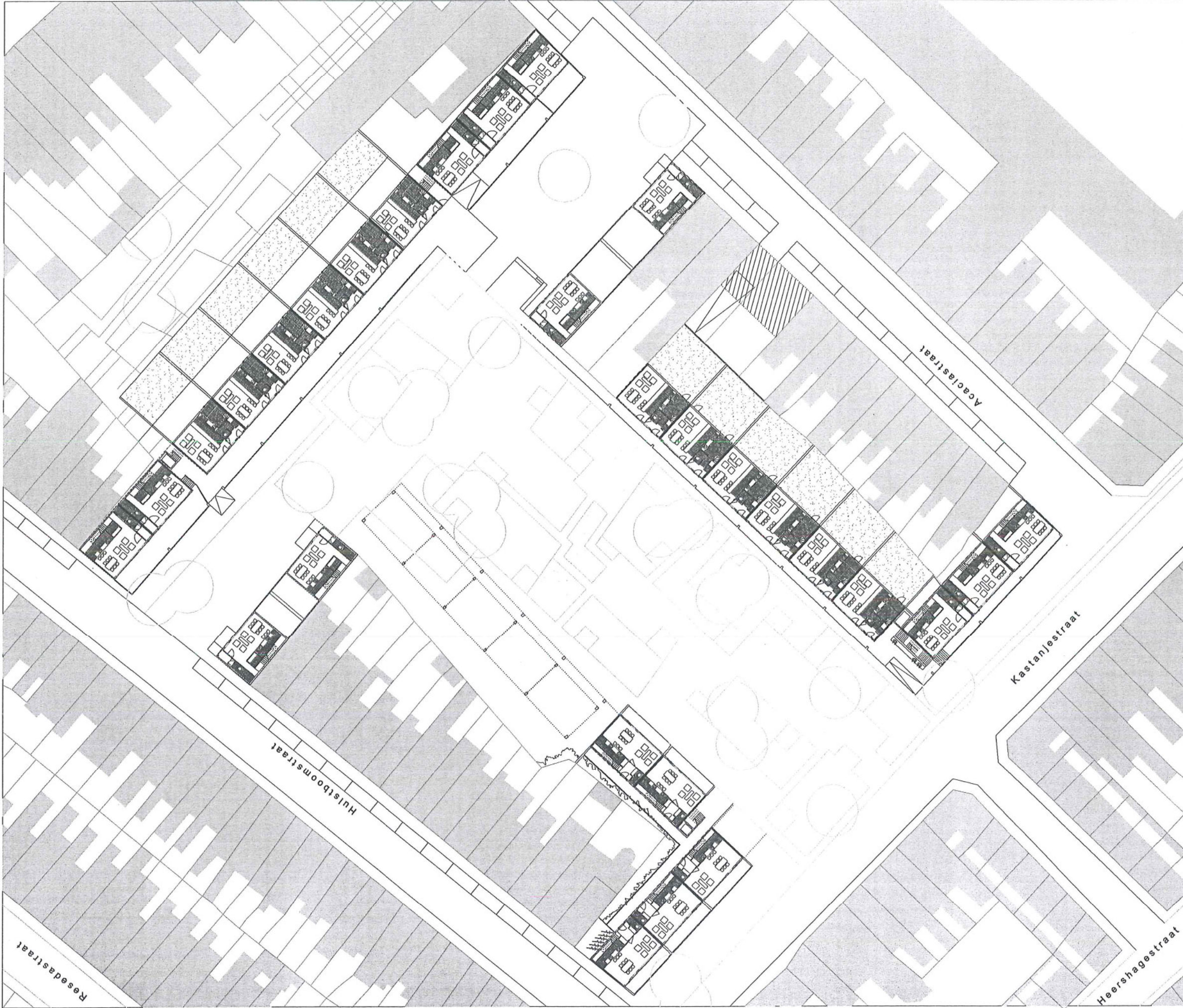










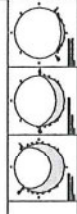


Schaal 1/200

Zuurstof voor de Brugse Poort | Acaciapark | Gelijkvloers

Architectenbureau Dirk Cossmann - 10 maart 2004



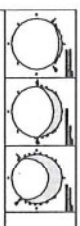


Schaal 1/200

Zuurstof voor de Brugse Poort | Acaciapark | 1e Verdieping

Architectuur O&C Oomen - 10 Maart 2024



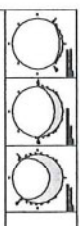
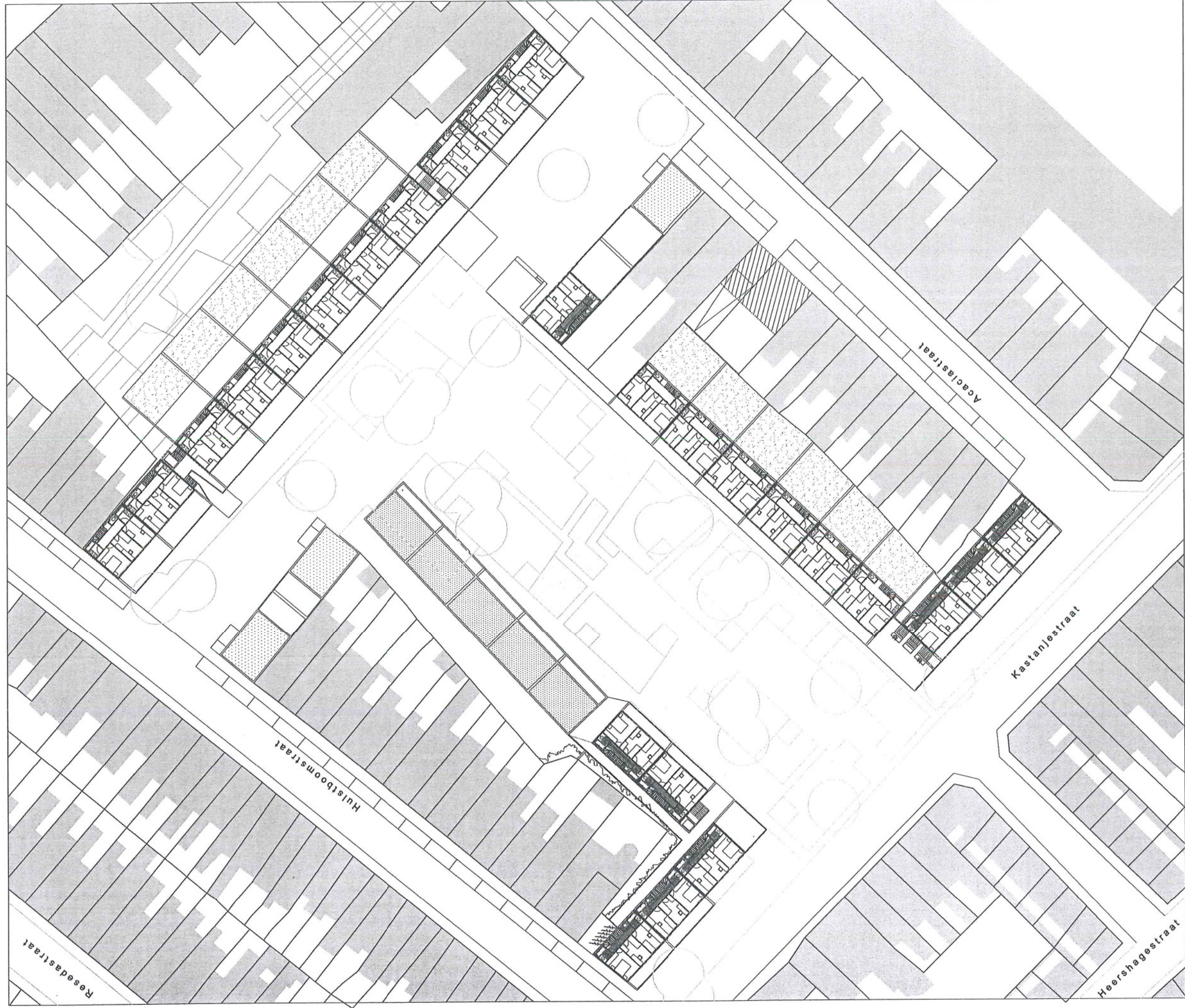


Schaal 1/200

Zuurstof voor de Brugse Poort | Acaciapark | 2e Verdieping

Architectenbureau Dirk Coopsma - 10 Maart 2004





Schaal 1/200

Zuurstof voor de Brugse Poort | Acaciapark | 3e Verdieping

Architectenbureau Dirk Gossmans - 15 Maart 2024





Schaal 1/200

Zuurstof voor de Brugse Poort | Acaciapark | Dakenplan

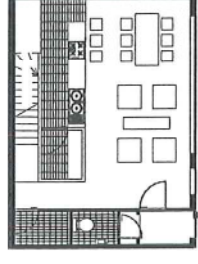
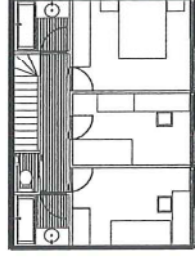
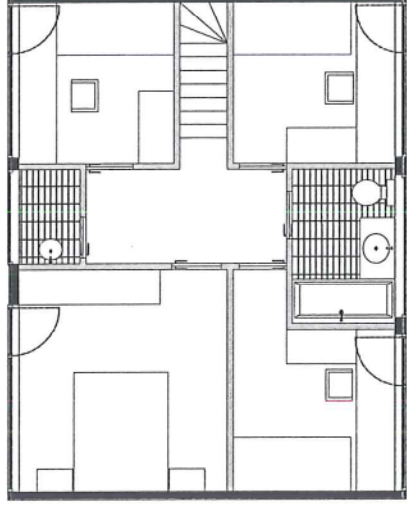
Architectenbureau Dirk Geysen - 10 Marts, 2014





**Type 1: 4/5**

Opp: 103,5m<sup>2</sup> x 11,4m<sup>2</sup> = 8m<sup>2</sup> x 8,2m<sup>2</sup>  
 Berging: 6,2 m<sup>2</sup> x 5m<sup>2</sup>  
 Aantal: 12 units

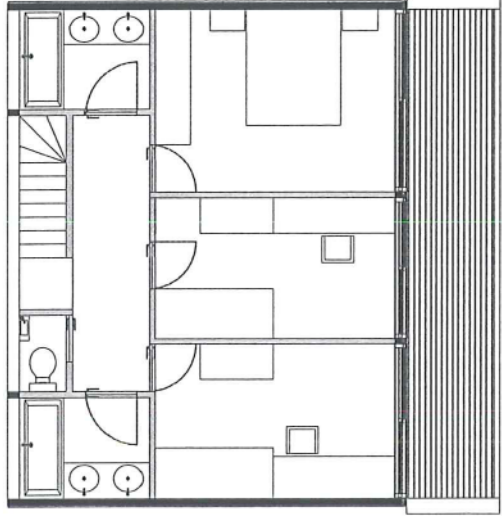
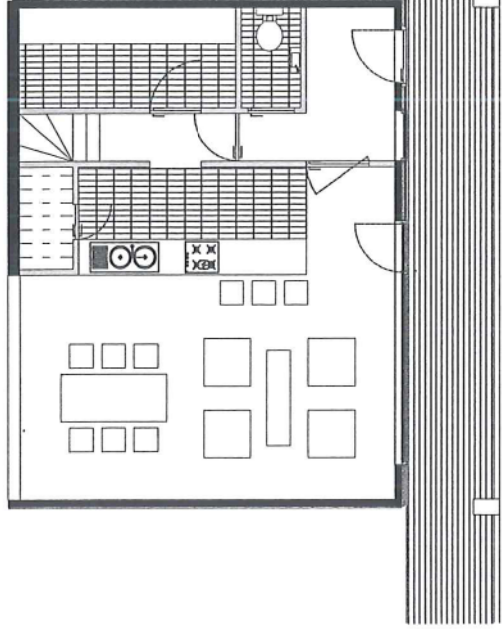


**Type 1: 3/4**

Opp: 98,44m<sup>2</sup> x 9,84m<sup>2</sup> = 8m<sup>2</sup> x 4,8m<sup>2</sup>  
 Berging: 4,12m<sup>2</sup> x 4m<sup>2</sup>  
 Aantal: 24 units

**Type 1: 3/4**

Opp: 100,0m<sup>2</sup> x 8,4m<sup>2</sup> = 8m<sup>2</sup> x 8,2m<sup>2</sup>  
 Berging: 6,2 m<sup>2</sup> x 5m<sup>2</sup>  
 Aantal: 12 units

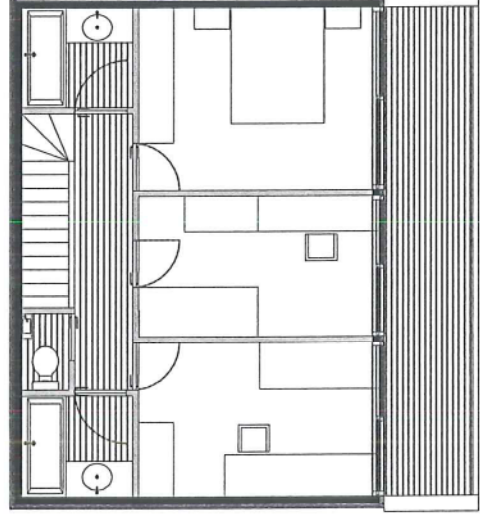
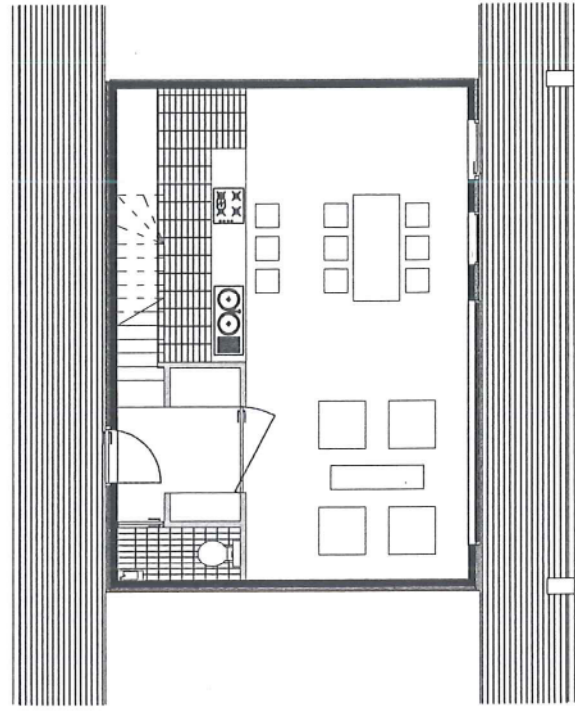


**Type 1: 3/4**

Opp: 98,44m<sup>2</sup> x 9,84m<sup>2</sup> = 8m<sup>2</sup> x 4,8m<sup>2</sup>  
 Berging: 4,02m<sup>2</sup> x 4m<sup>2</sup>  
 Aantal: 24 units

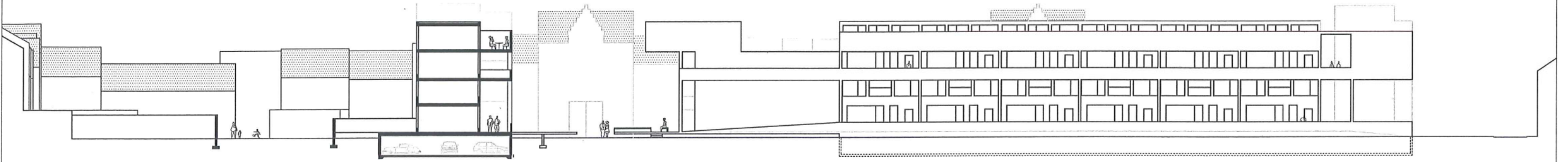
**Type 1: 3/4**

Opp: 99,44m<sup>2</sup> x 9,84m<sup>2</sup> = 8m<sup>2</sup> x 4,25m<sup>2</sup>  
 Berging: 4,25 m<sup>2</sup> x 4m<sup>2</sup>  
 Aantal: 18 units

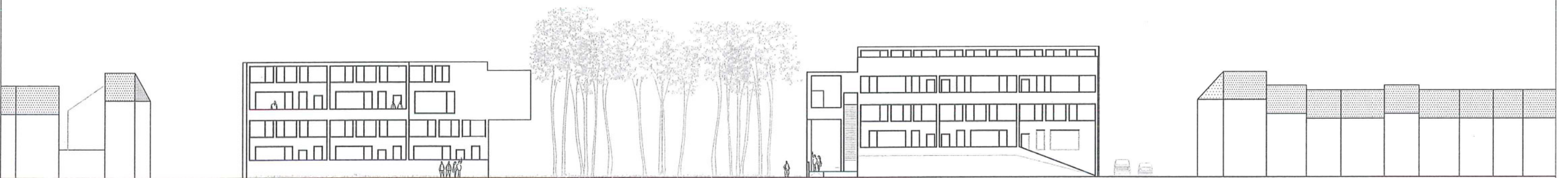




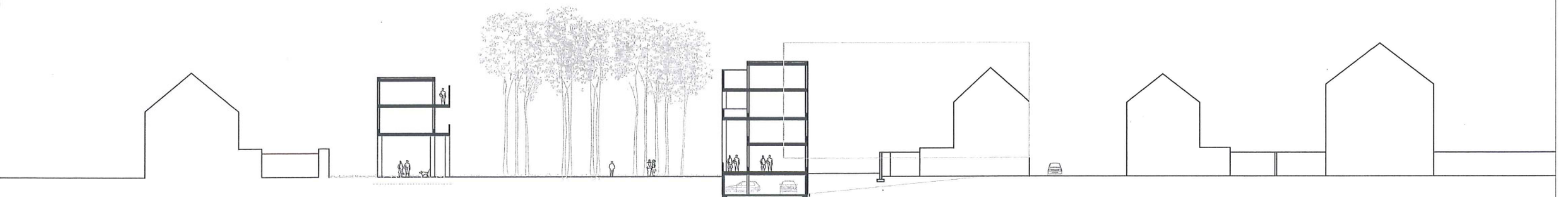
Zuurstof voor de Brugse Poort | Aanzicht N-W gevel



Zuurstof voor de Brugse Poort | Aanzicht Z-W gevels

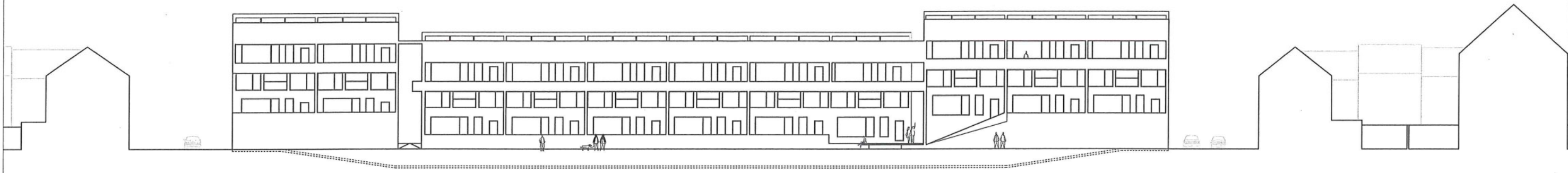


Zuurstof voor de Brugse Poort | N-O Snede Acaciapark

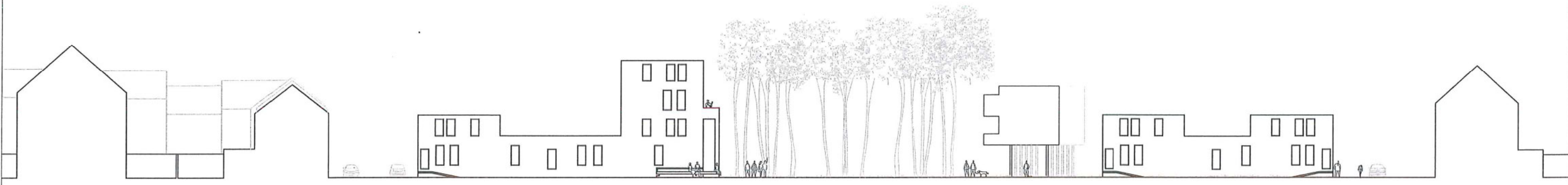




Zuurstof voor de Brugse Poort | Aanzicht Z-W



Zuurstof voor de Brugse Poort | Aanzicht N-O gevels



Zuurstof voor de Brugse Poort | Aanzicht Z-O gevel

