

OPEN OPROEP WILRIJK

B&E Baumschlager + Eberle GmbH, Lindauerstrasse 31, A-6911 Lochau, Österreich, office@baumschlager-eberle.com, Tel.+43 (0) 5574 430 79, Fax +43 (0) 5574 43079-30

BIBLIOTHEEK

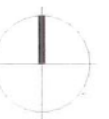
Datum: 18.11.2004







Scale 1:4000
0 40 80 200m

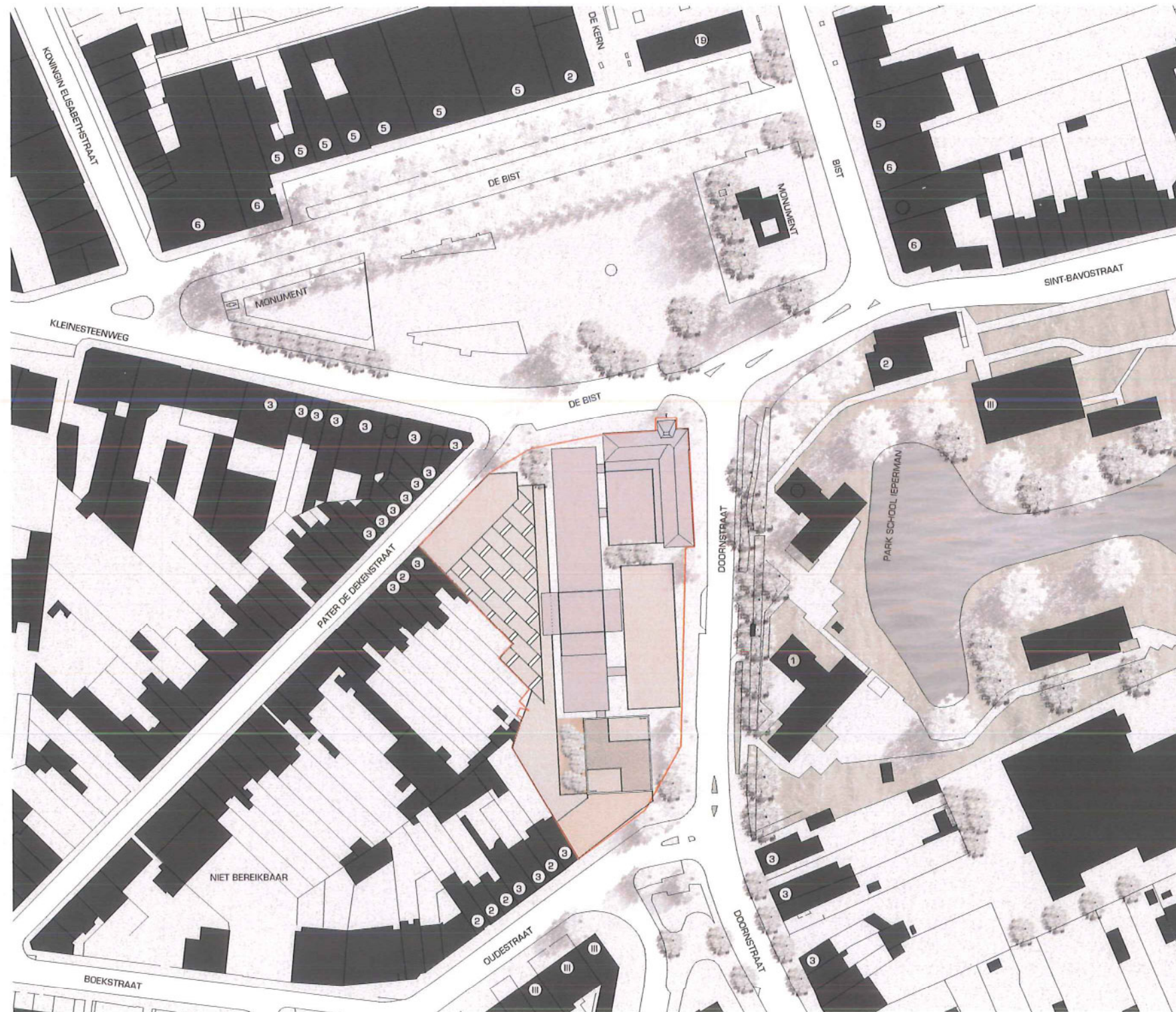


site plan and context
B 1.2

B

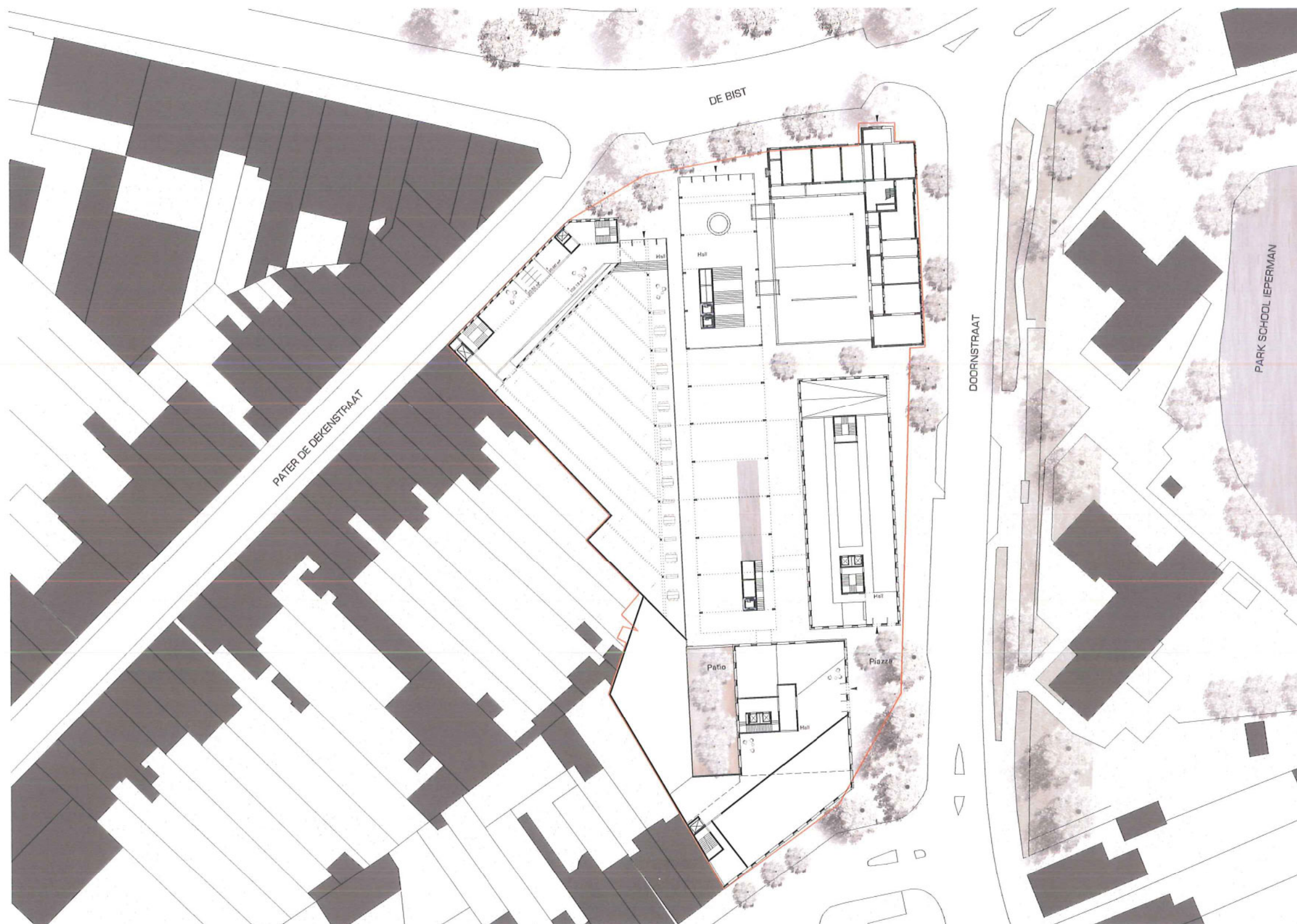
description urban concept

- structural solution in reference to context
- dimensions according to existing buildings - size and height
- different shape of volumes under respect of the specific situations
- four users - four types of building
- definition of a new "piazza" in the south as entry
- connection of "De Biest" and the "Piazza" with a "permeable structure"
- continuity of public space



Scale 1:1500
0 10 30 60 m





description of building concepts

public space

- public space within the area as a "filter" between north and south
- continuous and permeable public area as connecting link
- additional quality by creating a piazza in the southern part
- green space in continuity of existing patterns
- inner surface and pavement with one material (asphalt)
- homogeneity as platform for different volumes and functions
- integrated water basin

bibliotheek

- position of the biblioteque in the most public situation towards "De Bist"
- transparency to the inner court
- generosity and flexibility in creating one huge surface with natural light
- reduced size according to context

politie

- police station as an independent solid volume
- compact and flexible structure according the requirements
- easy access to underground car parking integrated in the building
- entrance area towards the "Piazza"

academien

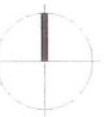
- academies with generous common entrance area towards the "Piazza"
- 2 entities in 1 building with different appearance
- specific shaped volume reflecting the functional scheme
- integration of a patio as "inner landscape" and key point in the structure
- volume moving in "steps" to a tower building

connections

- the given accessibility from the central building is respected for two units
- to the biblioteque there is no direct connection / close distance

Scale 1:750

0 10 20 50 m



elevation
D 1.1

D

description of elevation concepts

- development of different types of facades according to specific situations
- 3 different facades in proportion, dimension and size
- proposition of 1 material - the brick - for to achieve urban homogeneity
- subtle and different modifications in the use of the brick (colour / surface)
- creation of an urban and dense atmosphere
- reference to the cultural context by integration of existing elements
- integration into the site creating acceptance by citizens



1-1 elevation



2-2 elevation



elevation
D 1.2

D



scale 1:1000
0 10 20 50m

sections
D 1.3

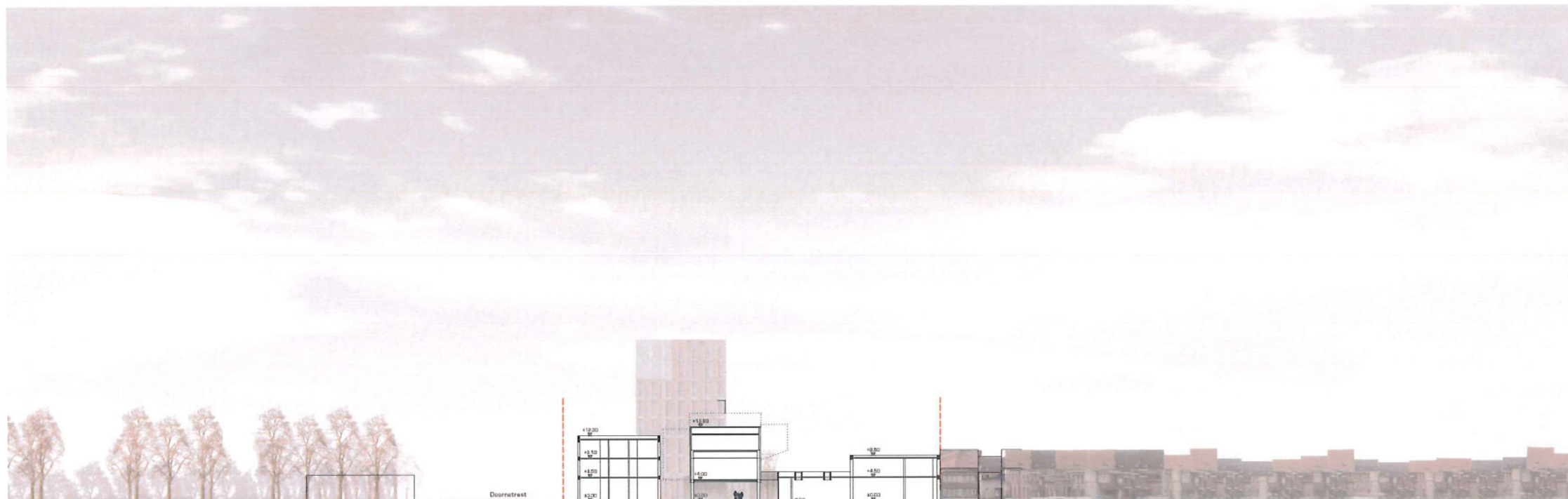
D

description of sections

- development of different shape of volumes according to specific situations
- 3 different sections
- standard floor to floor height : 3.60
- standard ground floor height : 4.50 m
- floor to floor height for bibliotheque : 5.40 m / 0.90 m below street level
- respecting neighbourhood dimensions
- respectful connection to existing buildings
- structural integration of existing courtyard through lower volumes



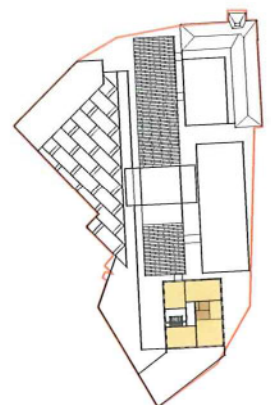
1-1 section



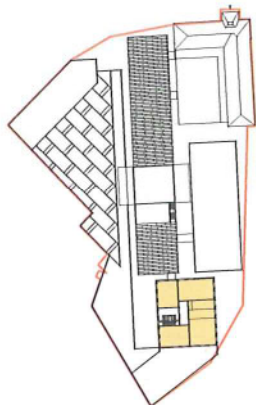
2-2 section



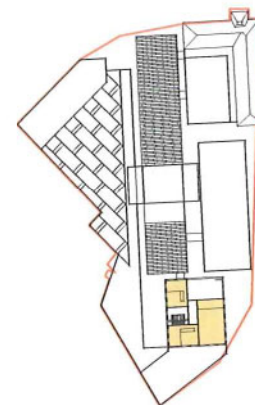
overview functional layout
E 1



4th floor



5th floor



6th floor



7th floor

| unit | academie b. | academie m. | politie | bibliotheek |
|---------|----------------------|----------------------|----------------------|----------------------|
| 1 | | | | |
| 2 | | | | |
| 3 | | | | |
| 4 | | | | |
| 5 | | | | |
| 6 | | | | |
| | 2,318 m ² | 1,394 m ² | 2,126 m ² | 1,666 m ² |
| reserve | | | | |



basement



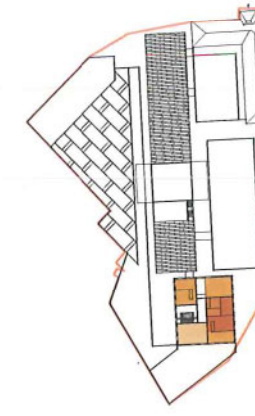
ground floor



1st floor



2nd floor



3rd floor

M 1:2500
0 25 50

150 m



basement / ground floor plan
E 1.1

E



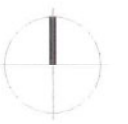
scale 1:1000
0 10 20 50 m







scale 1:1000
0 10 20 50 m



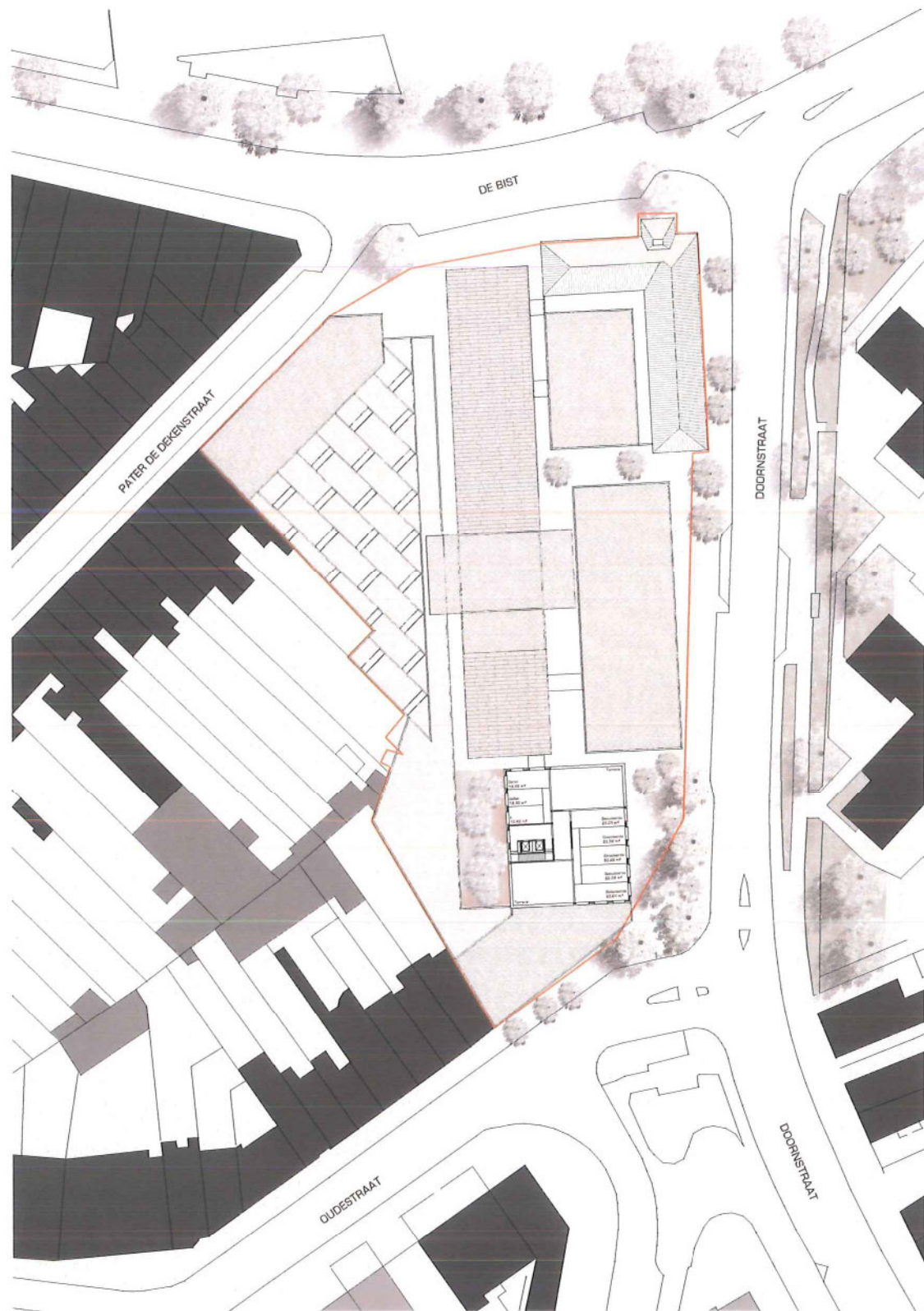


scale 1:1000
0 10 20 50 m



7th floor plan
E 1.5

E



scale 1:1000
0 10 20 50 m



selection of materials
F 1.1

F

ceiling

wood



plasterboard



perforated plasterboard / acoustic active



general targets

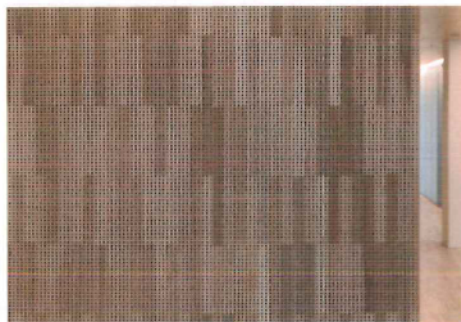
- cost efficient constructions
- durability
- reduction of maintenance costs
- sustainability
- convenient materials for users
- selection under respect of ecological and cultural values
- creation of a comfortable atmosphere
- use of authentic and local materials or techniques

selection of materials for ceilings

- standard : concrete ceiling / plastered / white surface
- alternative 1 : plasterboard ceiling / suspended / white surface
- alternative 2 : wooden panels / acoustic active / natural surface

wall

perforated plywood / acoustic active



plasterboard



natural stone cladding / e.g. lobby and public zones



selection of materials for walls

- standard to exterior : concrete or brick / rendered / white surface
- standard interior partitions : plaster board / plastered / white surface
- alternative 1 : stone / public areas and sanitary units / natural surface
- alternative 2 : wooden panels / acoustic active / natural surface
- alternative 3 : glass / partition of sanitary units / translucent

floor

parquet



linoleum



natural stone

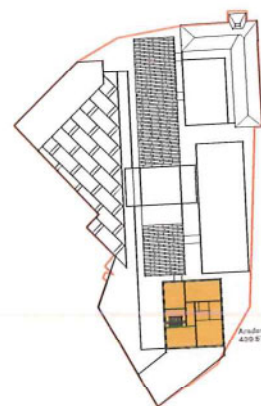


selection of materials for flooring

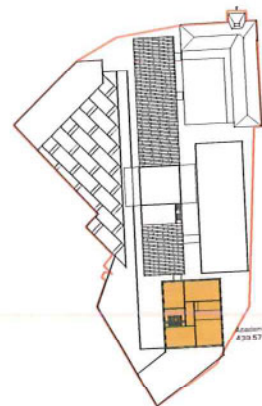
- standard : parquet / sealed or oiled / natural surface
- alternative 1 : linoleum / different colours / natural surface
- alternative 2 : stone / public areas and sanitary units / natural surface

gross floor area
G1.1

G



4th floor



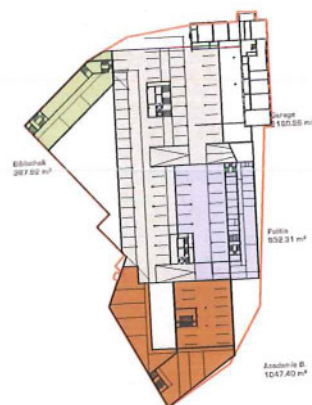
5th floor



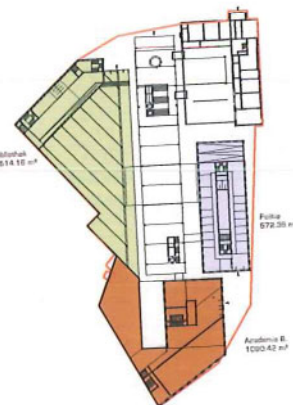
6th floor



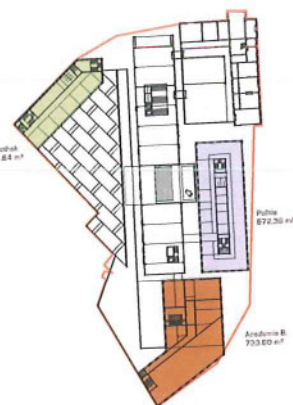
7th floor



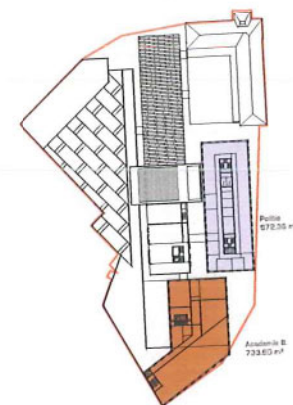
basement



ground floor



1st floor



2nd floor



3rd floor

| | academien | politie | bibliotheek | total |
|---------------|---------------------------|---------------------------|---------------------------|----------------------------|
| basement | 1047 m ² | 932 m ² | 388 m ² | 2367 m ² |
| ground floor | 1090 m ² | 672 m ² | 1514 m ² | 3276 m ² |
| 1st floor | 734 m ² | 672 m ² | 388 m ² | 1794 m ² |
| 2nd floor | 734 m ² | 672 m ² | | 1406 m ² |
| 3rd floor | 440 m ² | | | |
| 4th floor | 440 m ² | | | |
| 5th floor | 440 m ² | | | |
| 6th floor | 354 m ² | | | |
| 7th floor | 281 m ² | | | |
| below ground | 1047 m ² | 932 m ² | 388 m ² | 2367 m ² |
| above ground | 4513 m ² | 2016 m ² | 1902 m ² | 8431 m ² |
| total | 5560 m² | 2948 m² | 2290 m² | 10798 m² |
| parking space | 2160 m ² | | | |
| useable space | 3712 m ² | 2126 m ² | 1666 m ² | 7504 m ² |

M 1:2500

0 25 50 150 m



BOUWPROGRAMMA PARTICIPANTEN

| BIBLIOTHEEK | | OPPERVLAKTEN | | | |
|-----------------------------|--|--------------|--------|-------------------|------------|
| Naam | | pers | aantal | opp | opp totaal |
| 1. Onthaalgedeelte | | | | | |
| Inkomhal | | | | 1 100 | 100 |
| Inleverbox + berging | | | | 1 20 | 20 |
| 2. Bibliotheekruimte | | | | | |
| Bibliotheek | | | | 1 1.300 | 1.300 |
| 3. Burelen | | | | | |
| Directiebureel | | 1 | | 1 25 | 25 |
| Zit- & vergaderruimte | | 12 | | 1 25 | 25 |
| Burelen & werkruimte | | | | 1 100 | 100 |
| Computerruimte | | | | 1 50 | 50 |
| 4. Personeelsruimte | | | | | |
| Sanitair personeel | | | | 1 10 | 10 |
| Koffiehoek | | | | 1 4 | 4 |
| 5. Dienruimte | | | | | |
| Berging onderhoud | | | | 1 5 | 5 |
| Archiefruimte | | | | 1 50 | 50 |
| Stockage tijdelijk | | | | 1 50 | 50 |
| | | | | netto oppervlakte | 1.739 |

HET PROJECT B&E

| | | OPPERVLAKTEN | | | |
|--------|--|--------------|--|-------------------|-------|
| niveau | | aantal | | opp totaal | |
| 0 | | 1 | | 102 | |
| 0 | | 1 | | 20 | |
| 0 | | 1 | | 1.213 | |
| 1 | | 1 | | 25 | |
| 1 | | 1 | | 25 | |
| 1 | | 1 | | 106 | |
| 1 | | 1 | | 48 | |
| 1 | | 1 | | 17 | |
| 1 | | 1 | | 6 | |
| -1 | | 1 | | 6 | |
| -1 | | 1 | | 49 | |
| -1 | | 1 | | 49 | |
| | | | | netto oppervlakte | 1.666 |



BOUWPROGRAMMA PARTICIPANTEN

| POLITIE | Naam | OPPERVLAKTEN | | |
|---|---|--------------|--------|------------|
| | | pers | aantal | opp totaal |
| 1. Unit onthaal | | | | |
| | Inkomhal | | 1 | 20 |
| | Onthaalbalie | 2 | 1 | 10 |
| | Wachtruimte | 8 | 1 | 15 |
| | Veiligheidssas | | 1 | 2 |
| | Publiektelefoon | | 1 | 1 |
| | wachtruimte (vrijwillig) | | 1 | 10 |
| | wachtruimte (gedwongen) | | 1 | 10 |
| | onthaar ruimte | | 4 | 10 |
| | verhooruimte | | 2 | 10 |
| | verhooruimte lokale recherche | | 3 | 10 |
| | ruimte minderjarigen Jeugd | | 3 | 15 |
| 2. Unit opvang | | | | |
| | individuele cellen | | 4 | 10 |
| | collectieve cel | 50 | 1 | 50 |
| | opvangruimte voor minderjarige | | 4 | 10 |
| | onderzoekruimte- EHBO met sanitaire cel | | 1 | 15 |
| | ruimte voor opvang kleine dieren | | 1 | 5 |
| | ruimte voor gevonden voorwerpen | | 1 | 5 |
| | berging | | 1 | 5 |
| | sas | | 1 | 10 |
| 3. Unit beleid - preventie - lot/apa - verkeer - slazo | | | | |
| A. STAF | | | | |
| | hoofdcommissaris | | 1 | 20 |
| | burelen | | 4 | 15 |
| | vergaderuimte | 15 | 1 | 30 |
| | kitchenette | | 1 | 4 |
| | B. PREVENTIE | 3 | 1 | 35 |
| | C. LOT TEAM | 13 | 1 | 200 |
| | D. VERKEER | | 1 | 90 |
| | Leiding + Loket | 2 | | |
| | Hulpagenten | 10 | | |
| E. SLACHTOFFERZORG | | | | |
| | Bureel | 1 | 1 | 20 |
| | ontvangst/opvangruimte | | 1 | 10 |
| 4. Unit politieteam - lokale recherche - jeugdsectie | | | | |
| A. Politieteamwerking | | | | |
| | landschapskantoor | 3 | 1 | 15 |
| | ontvangstruimte | | 1 | 10 |
| | burelen officieren | | 2 | 15 |
| | verhoorkamers | | 3 | 10 |
| | wacht- en verslagkamer | | 1 | 15 |
| B. Opsporingsdienst en jeugd | | | | |
| | bureel officier | | 1 | 15 |
| | landschapskantoor | 8 | 1 | 40 |
| | verhoorkamer | | 1 | 20 |
| | cellen | | 2 | 10 |
| 5. Unit beschikkingsruimten | | | | |
| | berging | | 3 | 5 |
| | vergaderuimte | | 1 | 50 |
| 6. Unit personeel | | | | |
| | Kleedruimte | 150 | 1 | 350 |
| | Sanitair personeel | | 1 | 60 |
| | wapenruimte | | 1 | 20 |
| | droogruimte | | 1 | 45 |
| Dienruimte | | | | |
| | Archiefuimte | | 1 | 50 |
| | Gevonden voorwerpen | | 1 | 50 |
| | netto oppervlakte | | | 1.677 |
| Parking politie | | | | 500 |
| | | | | 2.177 |

HET PROJECT B&E

| niveau | OPPERVLAKTEN | |
|-------------------|--------------|------------|
| | aantal | opp totaal |
| 0 | 1 | 29 |
| 0 | 1 | 15 |
| 0 | 1 | 16 |
| 0 | 1 | 2 |
| 0 | 1 | 1 |
| 0 | 1 | 10 |
| 0 | 1 | 10 |
| 0 | 4 | 39 |
| 0 | 2 | 20 |
| 0 | 3 | 29 |
| 0 | 3 | 45 |
| -1 | 4 | 38 |
| -1 | 1 | 49 |
| -1 | 4 | 39 |
| -1 | 1 | 18 |
| -1 | 1 | 6 |
| -1 | 1 | 6 |
| -1 | 1 | 5 |
| -1 | 1 | 10 |
| 2 | 1 | 20 |
| 2 | 4 | 69 |
| 2 | 1 | 31 |
| 2 | 1 | 5 |
| 0 | 1 | 37 |
| 2 | 1 | 199 |
| 2 | 1 | 87 |
| 2 | 1 | 18 |
| 2 | 1 | 10 |
| 1 | 1 | 16 |
| 1 | 1 | 10 |
| 1 | 2 | 31 |
| 1 | 3 | 29 |
| 1 | 1 | 14 |
| 1 | 1 | 18 |
| 1 | 1 | 39 |
| 2 | 1 | 20 |
| 2 | 2 | 22 |
| 0 | 3 | 20 |
| 0 | 1 | 50 |
| 1 | 1 | 330 |
| 0 | 1 | 32 |
| -1 | 1 | 23 |
| -1 | 1 | 44 |
| 0 | 1 | 47 |
| -1 | 1 | 39 |
| netto oppervlakte | | 1.643 |
| 1.2 | | 483,42 |
| | | 2.126 |



building characters academie beeldende kunst / muziek, woordkunst & dans
G 1.2.3

BOUWPROGRAMMA PARTICIPANTEN

| ACADEMIE BEELDDE KUNST | | OPPERVLAKTEN | | | |
|--|--|--------------|--------|-------------------|--------------|
| Naam | | pers | aantal | opp | opp totaal |
| 1. Onthaalgedeelte | | | | | |
| Inkomhal | | | 1 | 80 | 80 |
| 2. Leslokalen | | | | | |
| A Atelier restauratie + labo | | | 1 | 250 | 250 |
| B Atelier grafiek + spuitcabine + doka | | | 1 | 300 | 300 |
| C Atelier schilderkunst | | | 1 | 300 | 300 |
| D Atelier monumentale kunst | | | 1 | 300 | 300 |
| E Lagere graad | | 8 | 50 | 400 | |
| F Middelbare graad | | 3 | 70 | 210 | |
| G Computerklas | | 1 | 50 | 50 | |
| 3. Burelen | | | | | |
| Secretariaat met onthaal | | | 1 | 60 | 60 |
| Bibliotheek in secretariaat | | | 1 | 10 | 10 |
| Directiebureel | | 1 | 1 | 25 | 25 |
| Zit- vergaderruimte directie | | 12 | 1 | 25 | 25 |
| Leraarslokaal bij secretariaat | | | 1 | 30 | 30 |
| Fotocopie | | | 1 | 10 | 10 |
| 4. Personeelsruimte | | | | | |
| Sanitair personeel | | | 1 | 20 | 20 |
| Koffiehoek | | | 3 | 4 | 12 |
| 5. Dienruimte | | | | | |
| Berging onderhoud | | | 3 | 3 | 9 |
| Archief ruimte | | | 1 | 50 | 50 |
| | | | | netto oppervlakte | 2.141 |

BOUWPROGRAMMA PARTICIPANTEN

| ACADEMIE MUZIEK, WOORDKUNST & DANS | | OPPERVLAKTEN | | | |
|------------------------------------|--|--------------|--------|-------------------|--------------|
| Naam | | pers | aantal | opp | opp totaal |
| 1. Onthaalgedeelte | | | | | |
| Inkomhal | | | 1 | 80 | 80 |
| 2. Leslokalen | | | | | |
| A Grote klas A | | 35 | 1 | 60 | 60 |
| B Grote klas B | | 35 | 1 | 60 | 60 |
| C Grote klas C | | 35 | 1 | 60 | 60 |
| D Grote klas D | | 35 | 1 | 60 | 60 |
| E Slagwerkklas | | | 1 | 70 | 70 |
| F Berging slagwerkklas | | | 1 | 20 | 20 |
| G Samenspelokaal 40 II | | 40 | 1 | 70 | 70 |
| I Samenspelokaal | | | 1 | 70 | 70 |
| J Geïsoleerde klas instrumentenles | | 10 | 25 | 250 | |
| K Woordstudio AVV + podium | | | 2 | 70 | 140 |
| L Bewegingslokaal | | | 1 | 100 | 100 |
| M Oefenlokaal | | | 5 | 20 | 100 |
| 4. Burelen | | | | | |
| Secretariaat met onthaal | | | 1 | 60 | 60 |
| Bibliotheek in secretariaat | | | 1 | 10 | 10 |
| Directiebureel | | 1 | 1 | 25 | 25 |
| Zit- & vergaderruimte | | 12 | 1 | 25 | 25 |
| Leraarslokaal bij secretariaat | | | 1 | 30 | 30 |
| 5. Personeelsruimte | | | | | |
| Sanitair personeel | | | 1 | 20 | 20 |
| Koffiehoek | | | 3 | 4 | 12 |
| 6. Dienruimte | | | | | |
| Berging onderhoud | | | 3 | 3 | 9 |
| Archief ruimte | | | 1 | 25 | 25 |
| Bergplaats instrumenten | | | 1 | 25 | 25 |
| | | | | netto oppervlakte | 1.381 |

HET PROJECT B&E

| OPPERVLAKTEN | | |
|--------------|--------|-------------------|
| niveau | aantal | opp totaal |
| 0 | 1 | 246 |
| 0 | 1 | 259 |
| 1 | 1 | 290 |
| 2 | 1 | 290 |
| 0 | 1 | 289 |
| -1 | 8 | 396 |
| -1,2 | 0 | 3 |
| 2 | 1 | 60 |
| 1 | 1 | 58 |
| 1 | 1 | 18 |
| 1 | 1 | 26 |
| 1 | 1 | 26 |
| 1 | 1 | 33 |
| 1 | 1 | 9 |
| 1,2 | 1 | 20 |
| 1,2 | 3 | 8 |
| 1,2 | 0 | 3 |
| 2 | 1 | 58 |
| | | netto oppervlakte |
| | | 2.310 |

HET PROJECT B&E

| OPPERVLAKTEN | | |
|--------------|--------|-------------------|
| niveau | aantal | opp totaal |
| | 1 | 0 |
| 3 | 1 | 67 |
| 4 | 1 | 68 |
| 4 | 1 | 62 |
| 5 | 1 | 62 |
| 4 | 1 | 77 |
| 4 | 1 | 24 |
| 5 | 1 | 80 |
| 4 | 1 | 80 |
| 6,7 | 10 | 248 |
| 5 | 2 | 144 |
| 6 | 1 | 102 |
| 5,7 | 5 | 101 |
| 3 | 1 | 59 |
| 3 | 1 | 17 |
| 3 | 1 | 25 |
| 3 | 1 | 25 |
| 3 | 1 | 35 |
| 3,4 | 1 | 26 |
| 3,4 | 3 | 22 |
| 3,6 | 3 | 15 |
| 3 | 1 | 24 |
| 3 | 1 | 32 |
| | | netto oppervlakte |
| | | 1.394 |