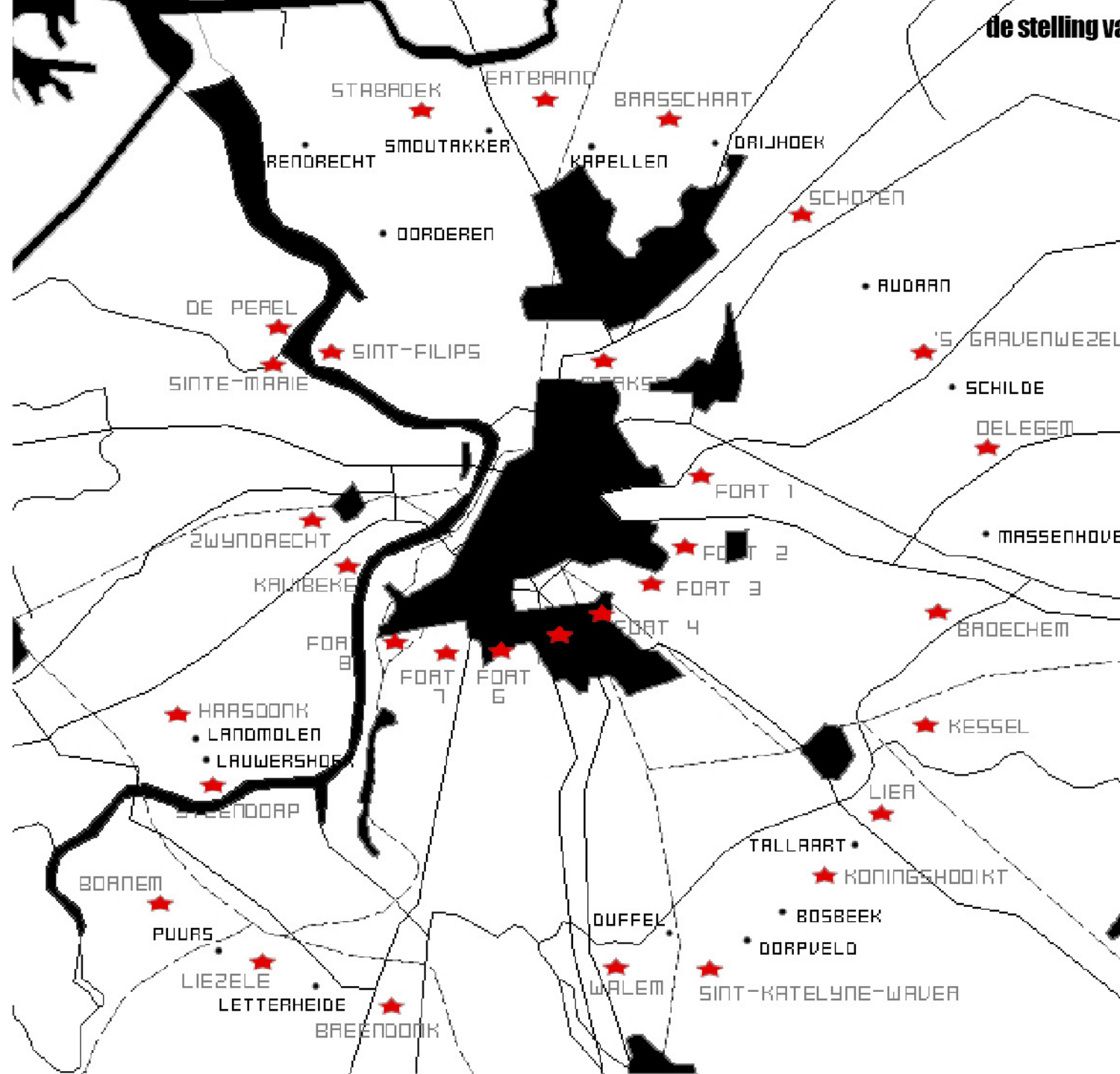


Topsportcampus Wilrijk

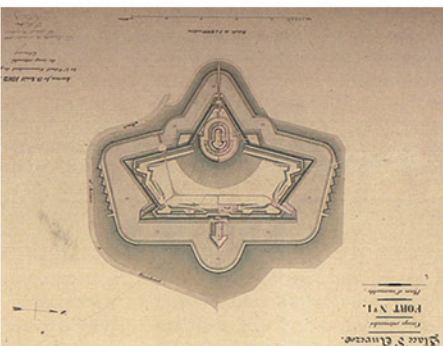
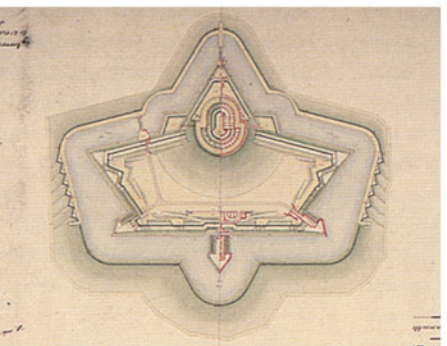
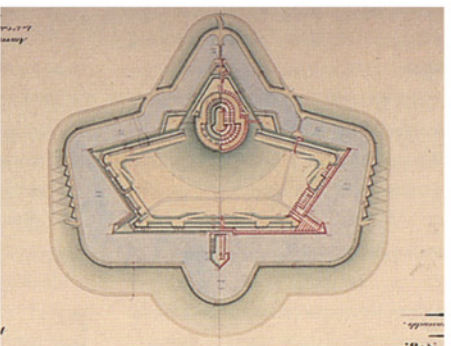
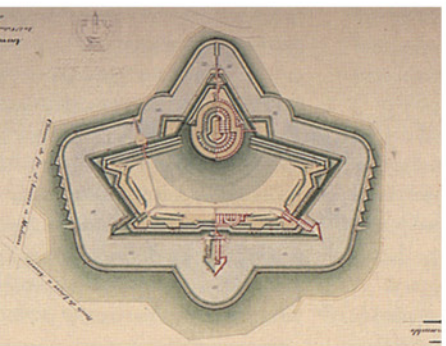
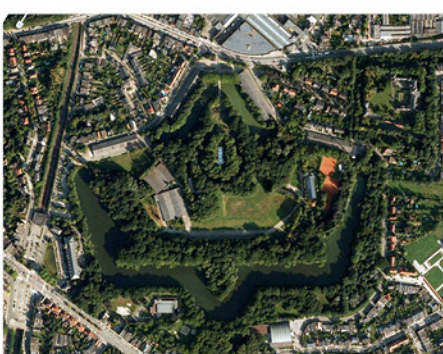
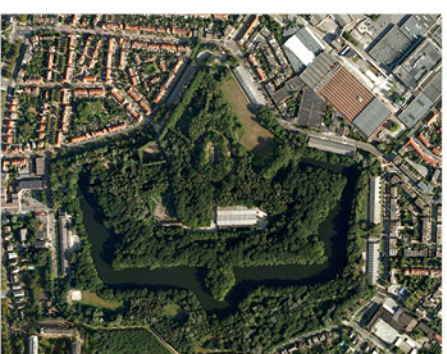
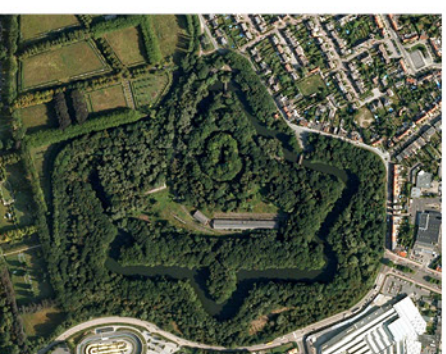
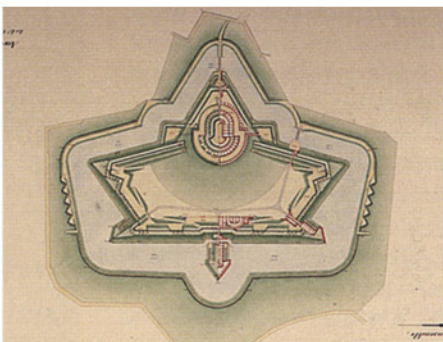
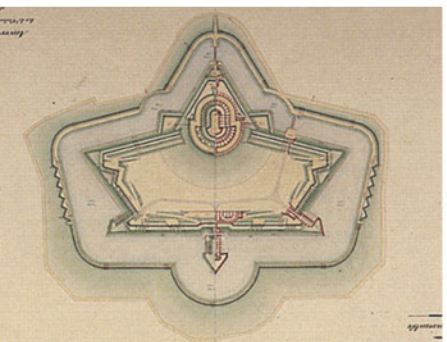
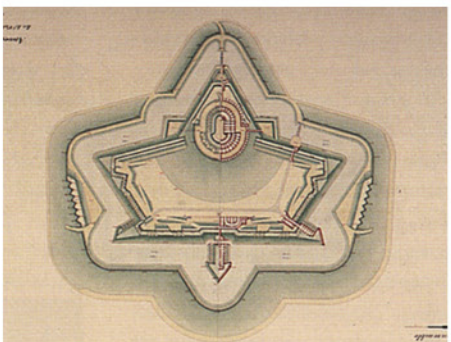
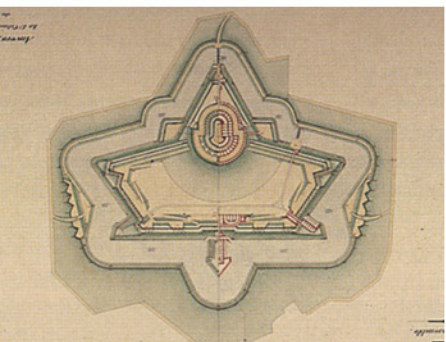
FORT VI

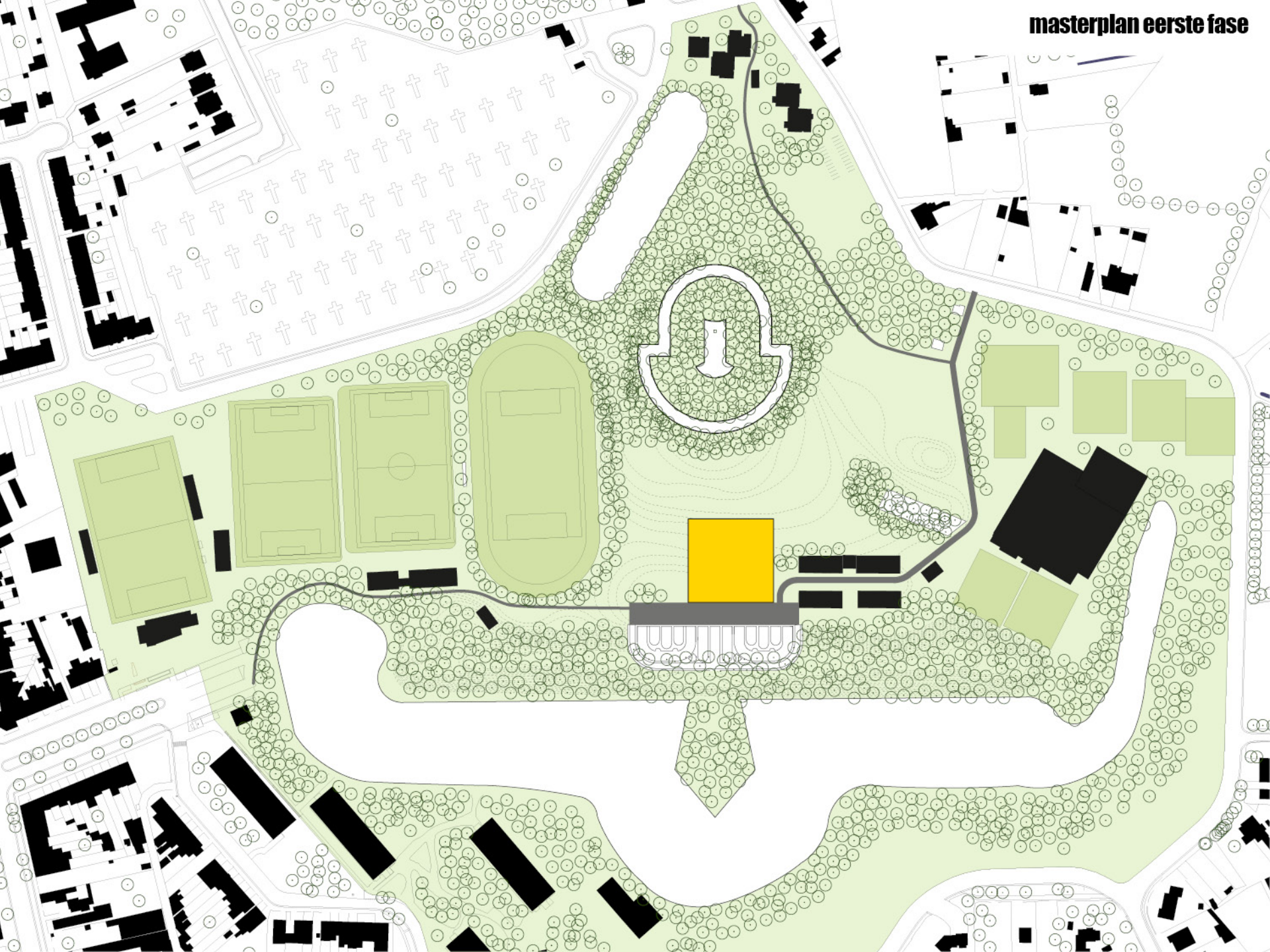
00 2017 D

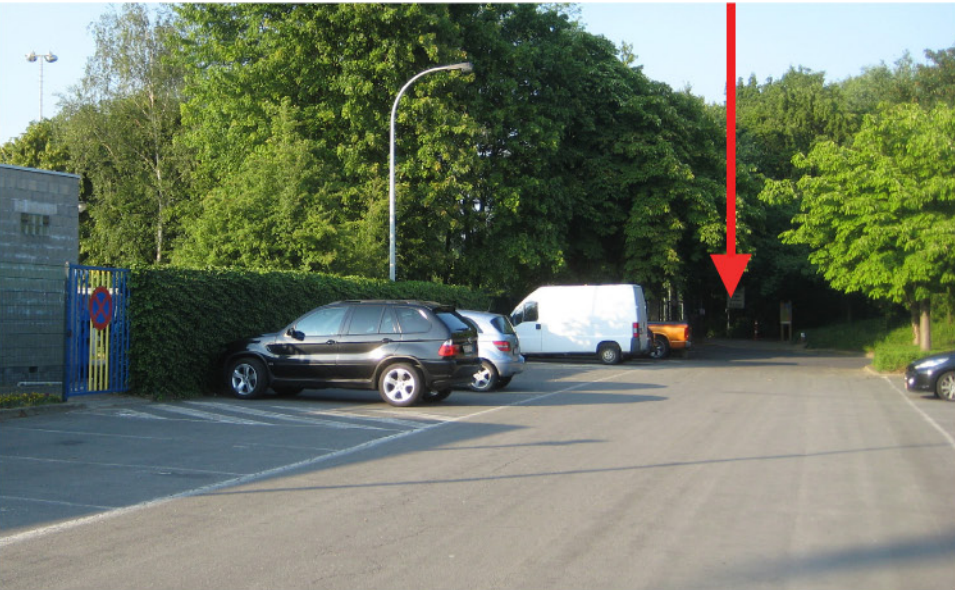
de stelling van Antwerpen





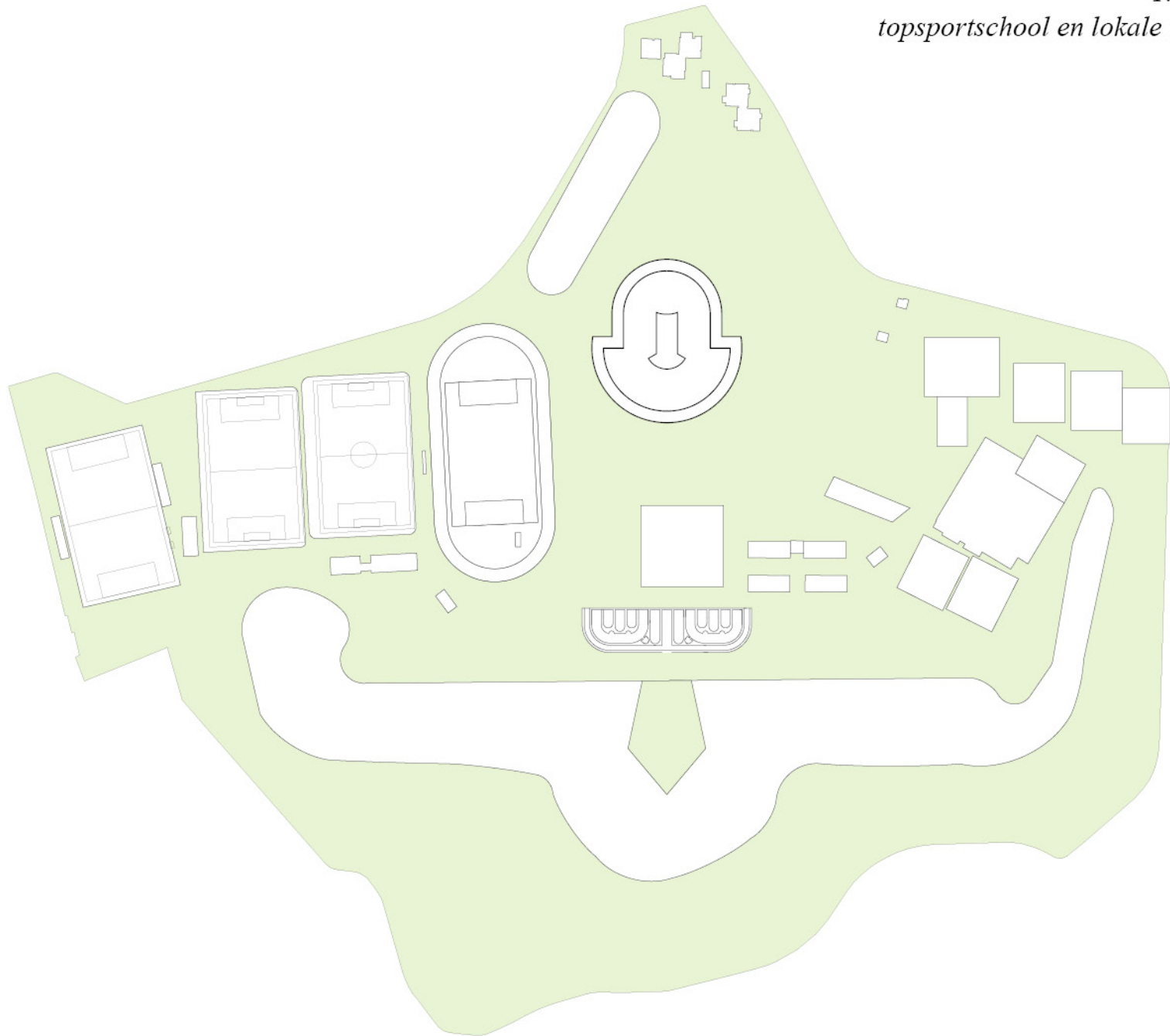




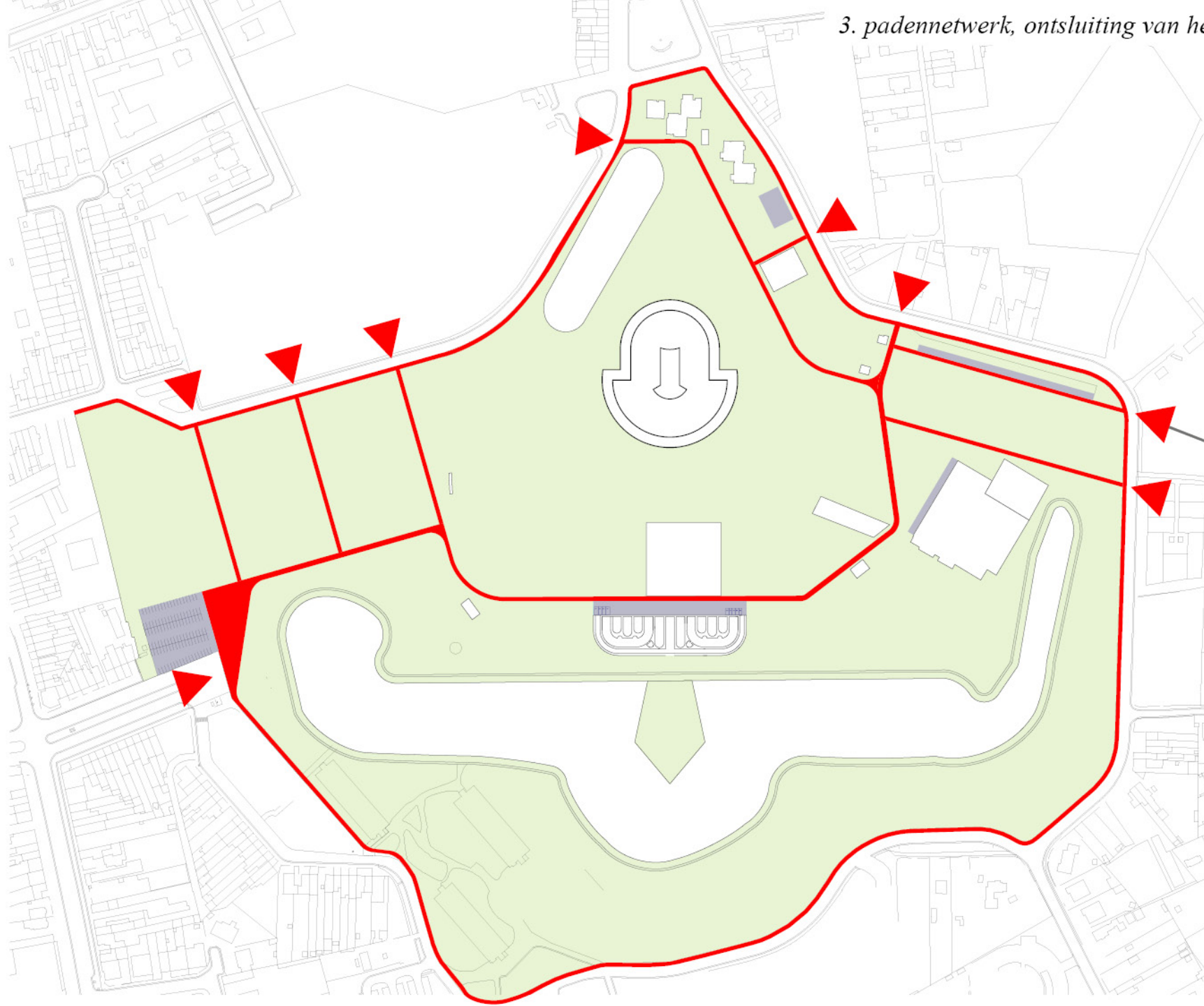




*1. eerste fase,
topsportschool en lokale inrichtingen*

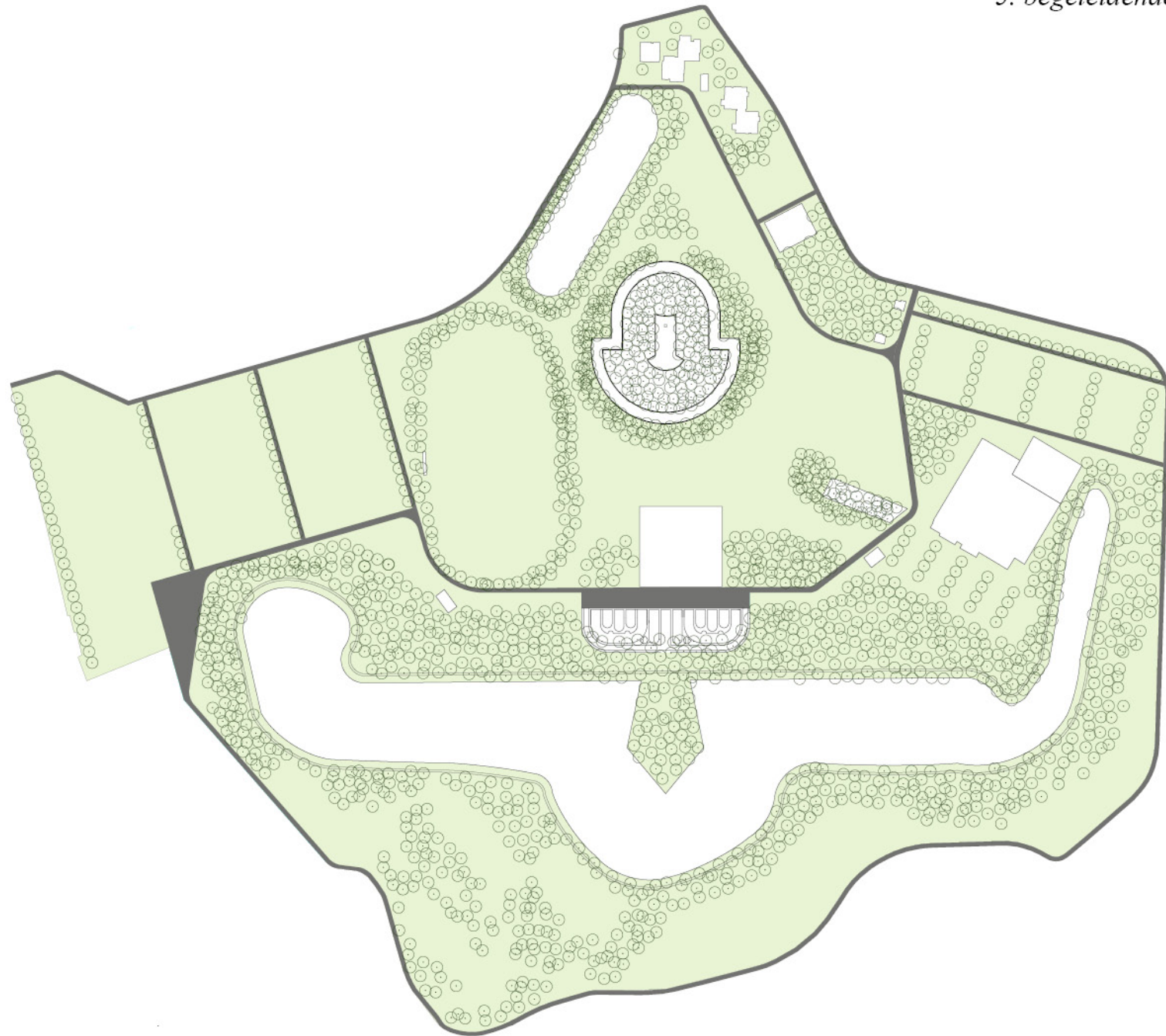


3. padennetwerk, ontsluiting van het fort

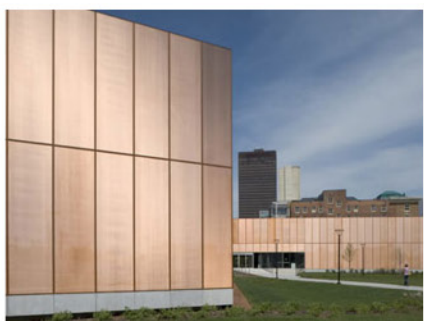
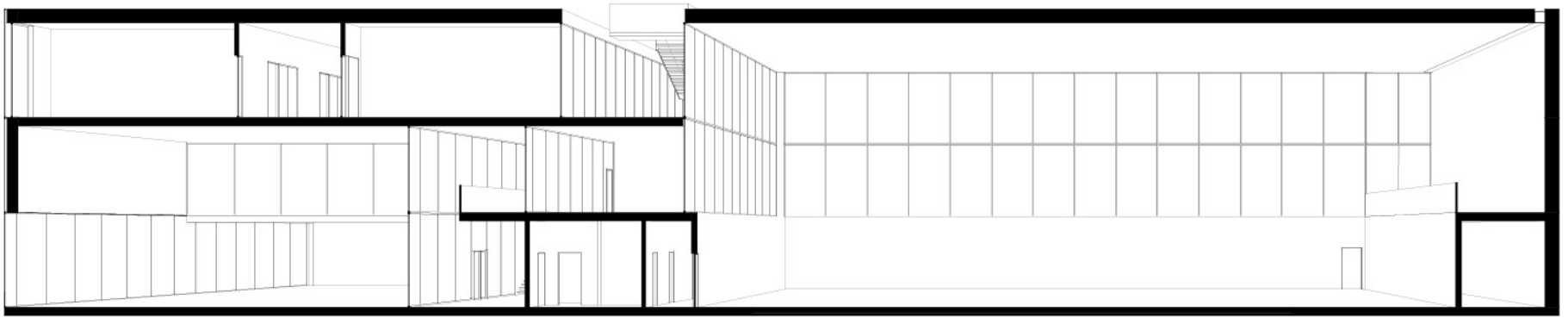


4. vernieuwing van de sportvelden,
inplanting nieuwe gebouwen





Een abstract monolithisch volume, een rijke ruimtelijkheid



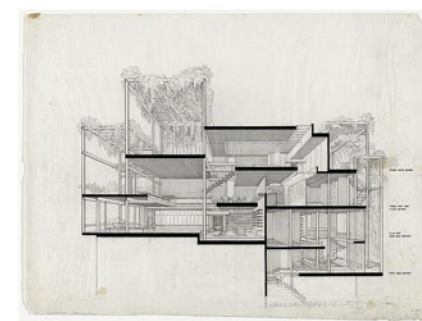
Des Moines library, D. Chipperfield



Vitrolles Stadium, R. Ricciotti

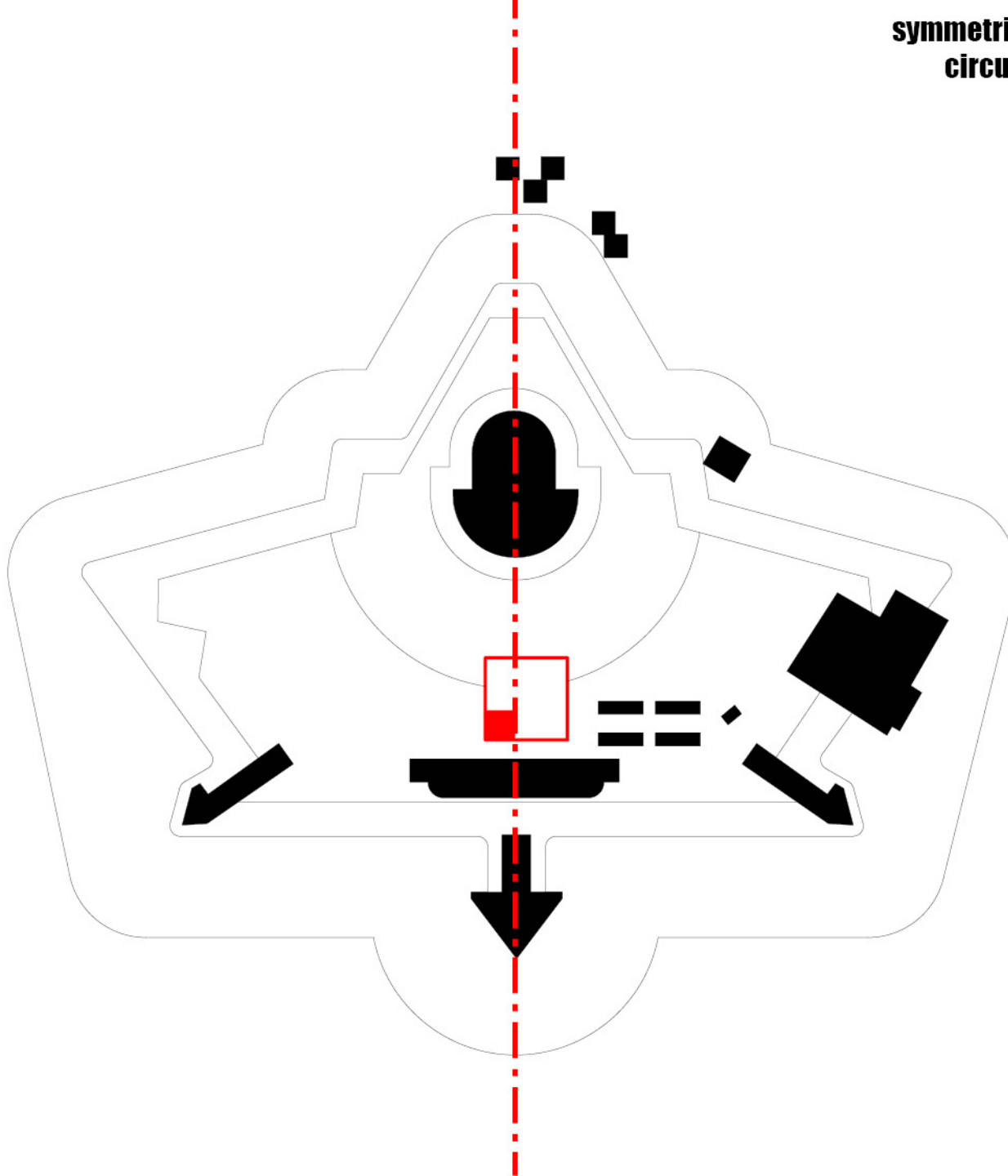


Dubai, B. Princen

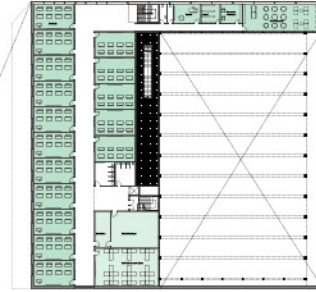


New York penthouse, P. Rudolph

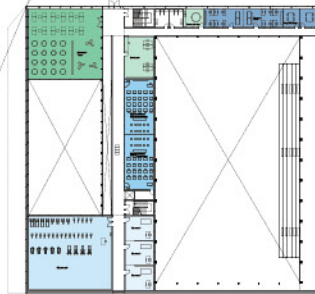
**symmetrie versus asymmetrie
circulatie, sporthal, inkom**



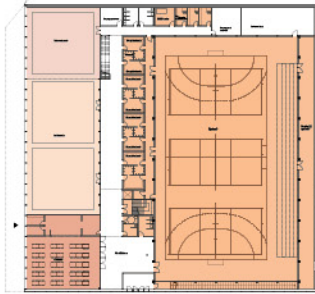
publieke, semi-publieke & schooleigenruimtes



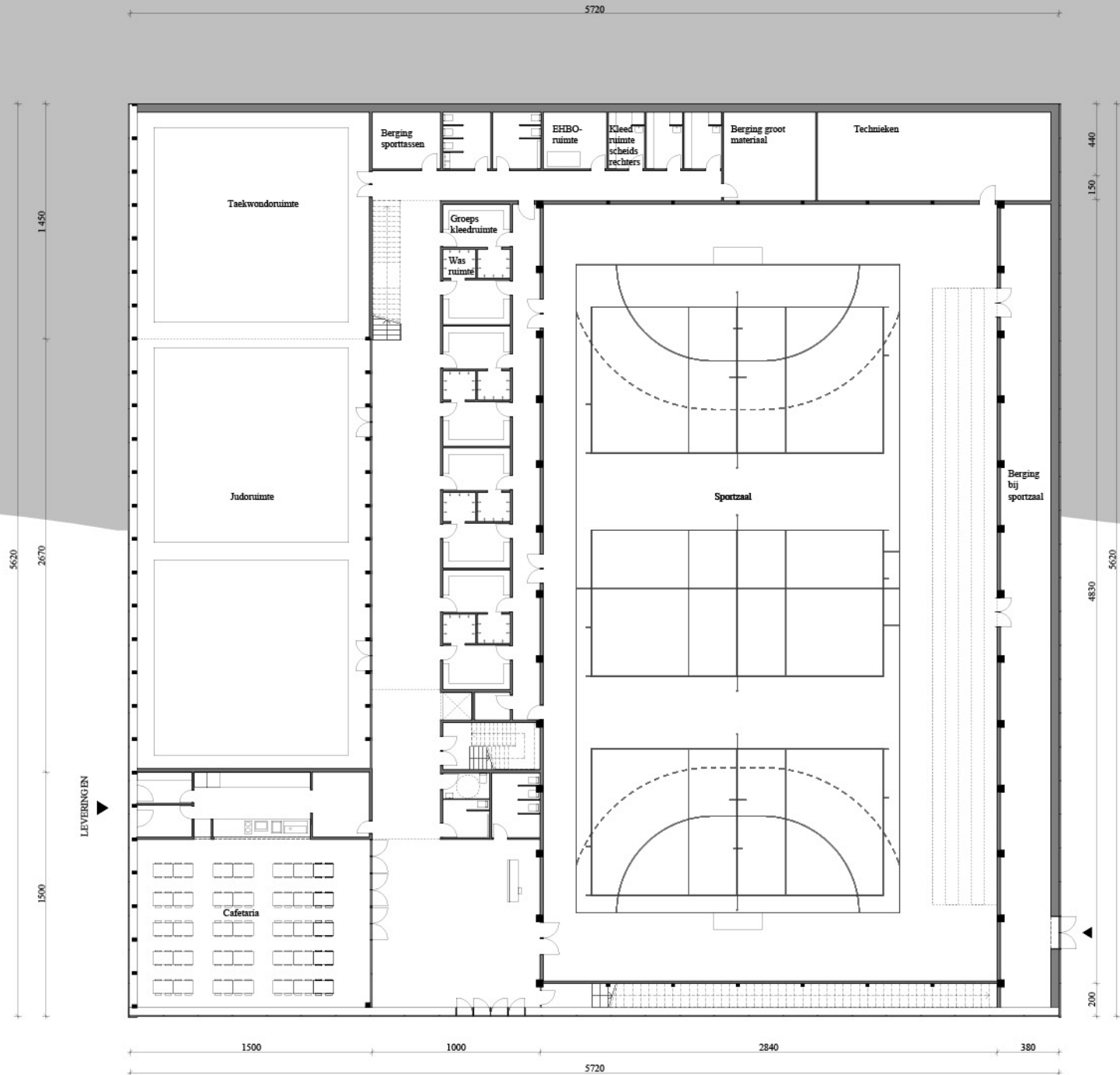
*school
klaslokalen
administratie*

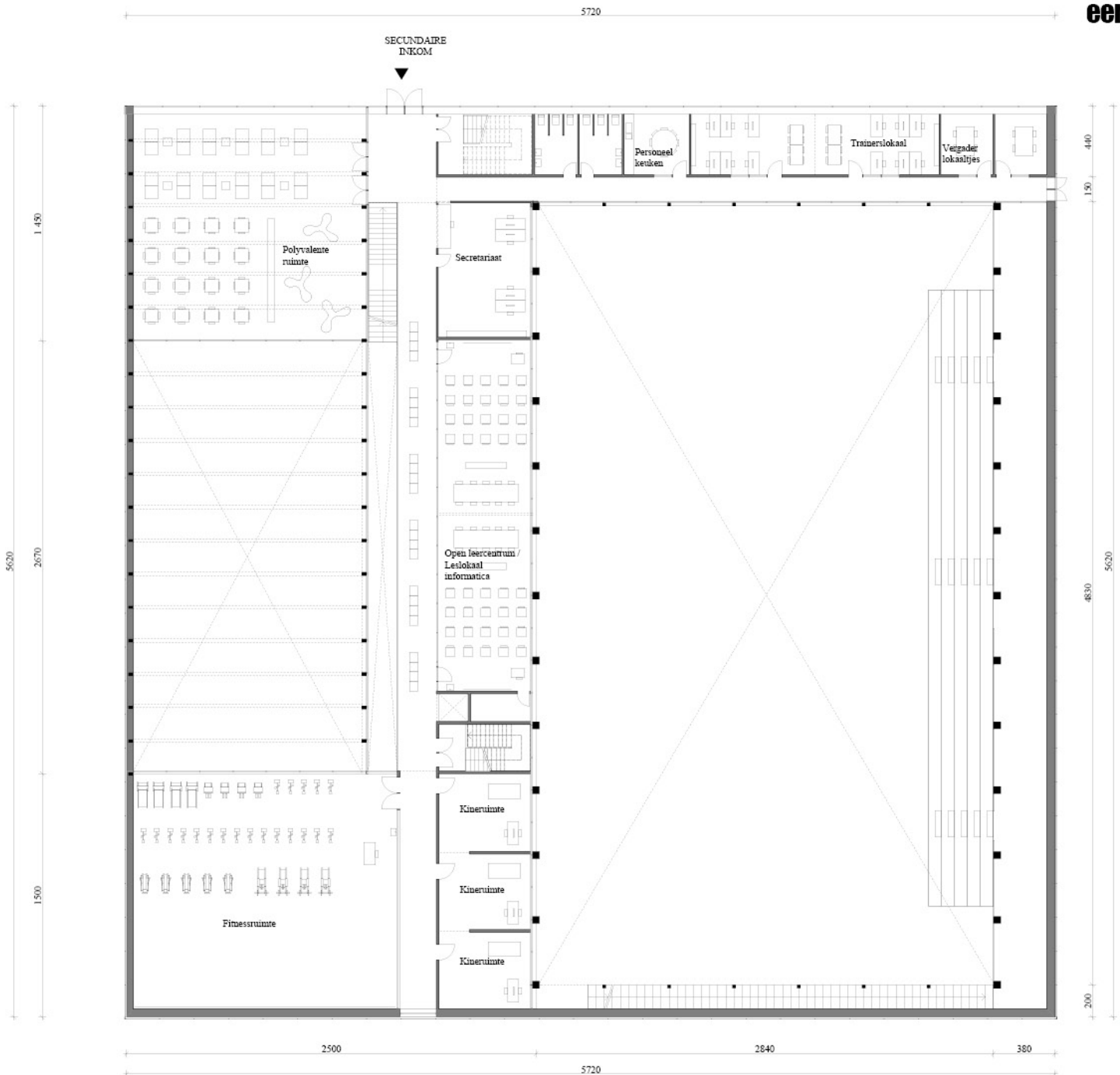


*semi-publieke ruimtes - fitness
polyvalente zaal - open leercentrum
secretariaat bij inkom school*

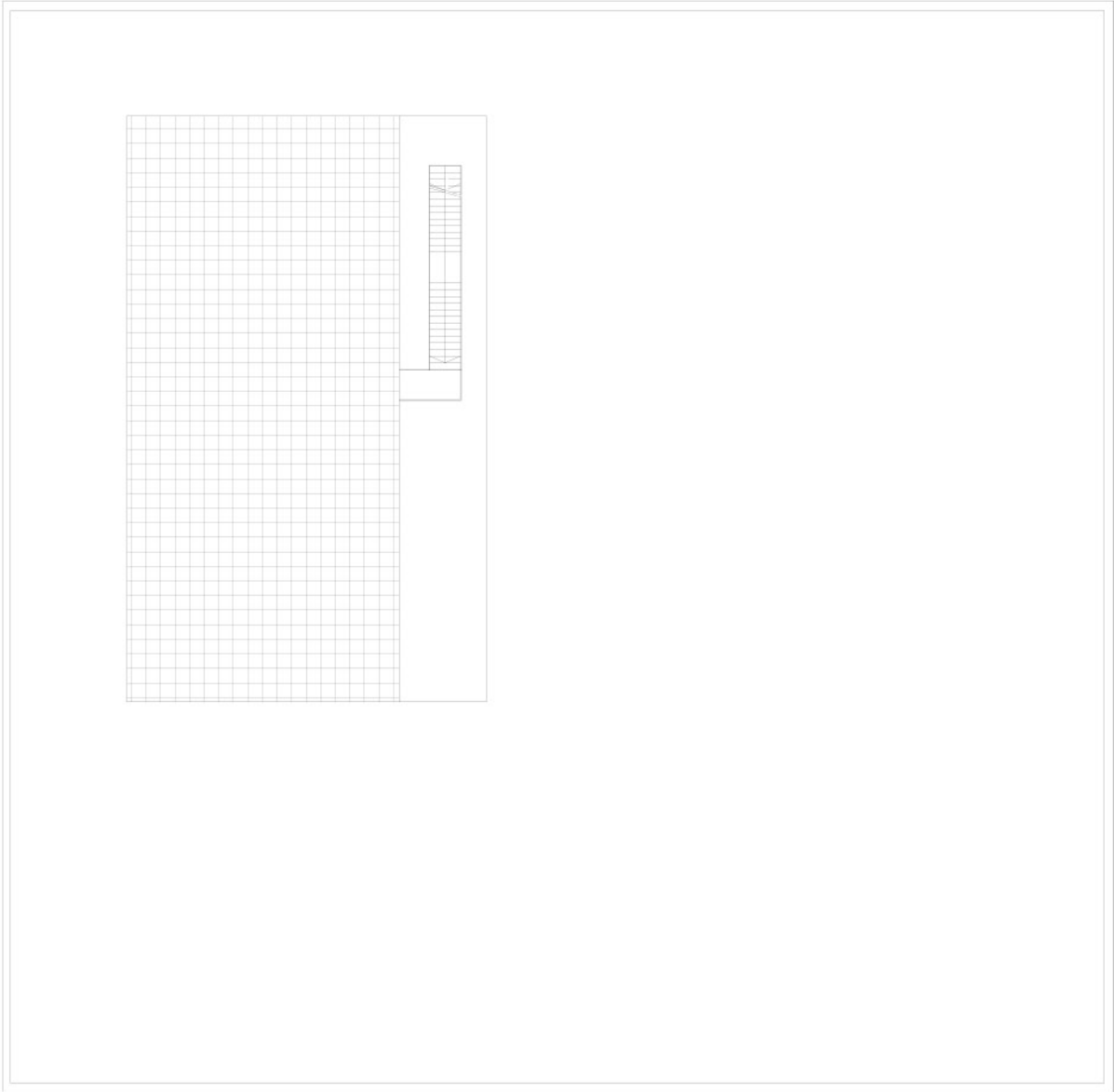


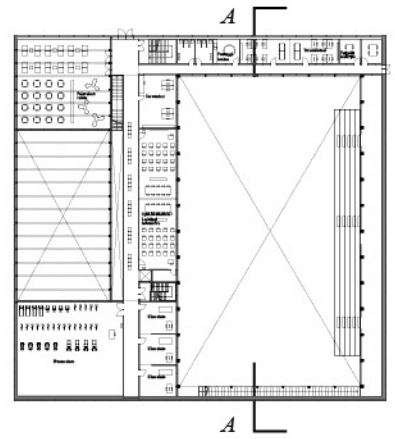
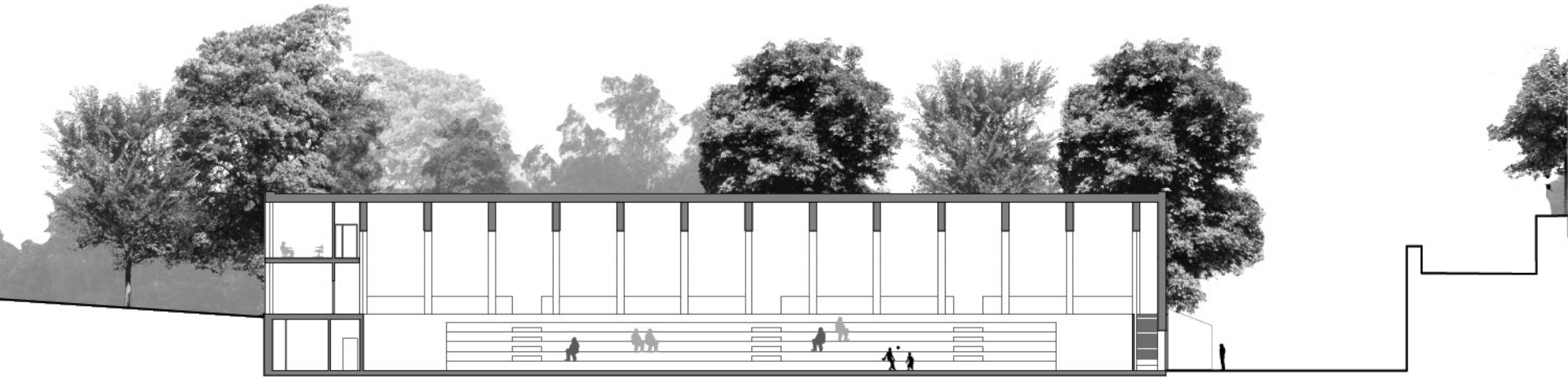
*publieke ruimtes
sporthal / dojo / vestiaires
restaurant*

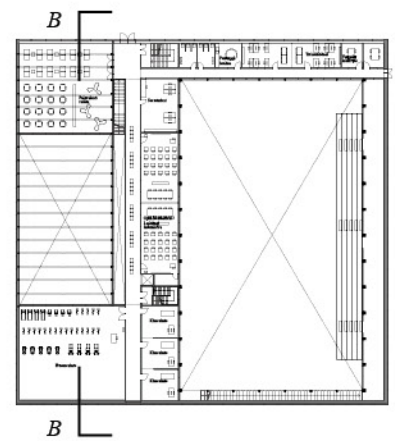
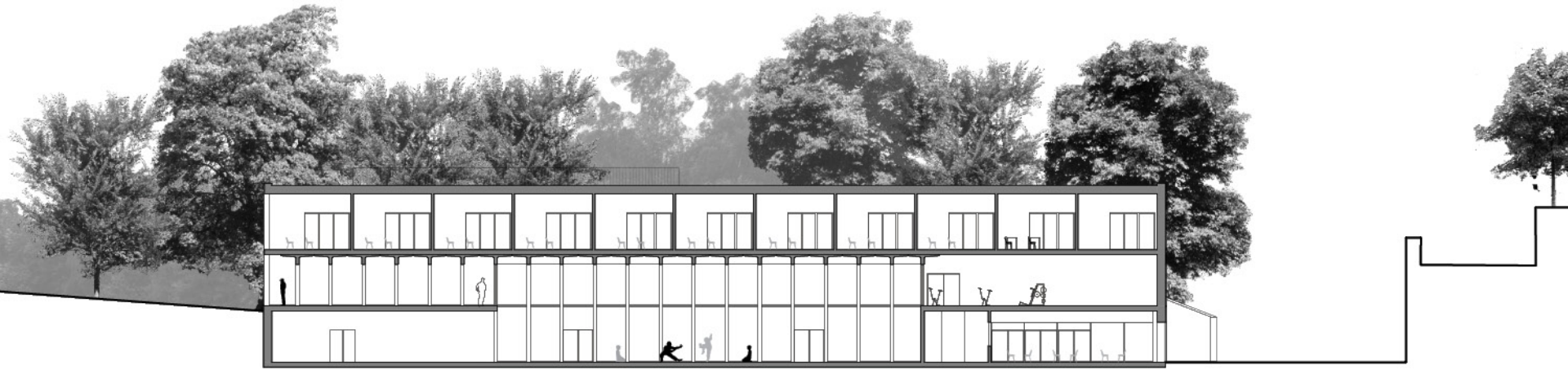


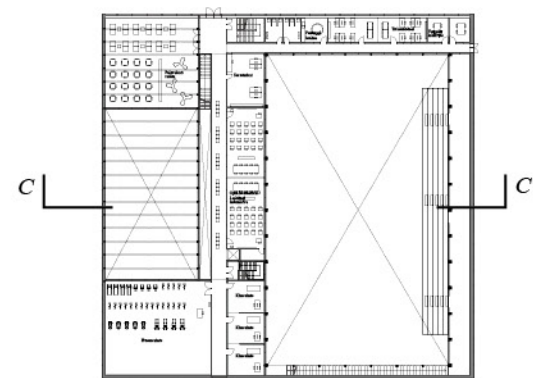


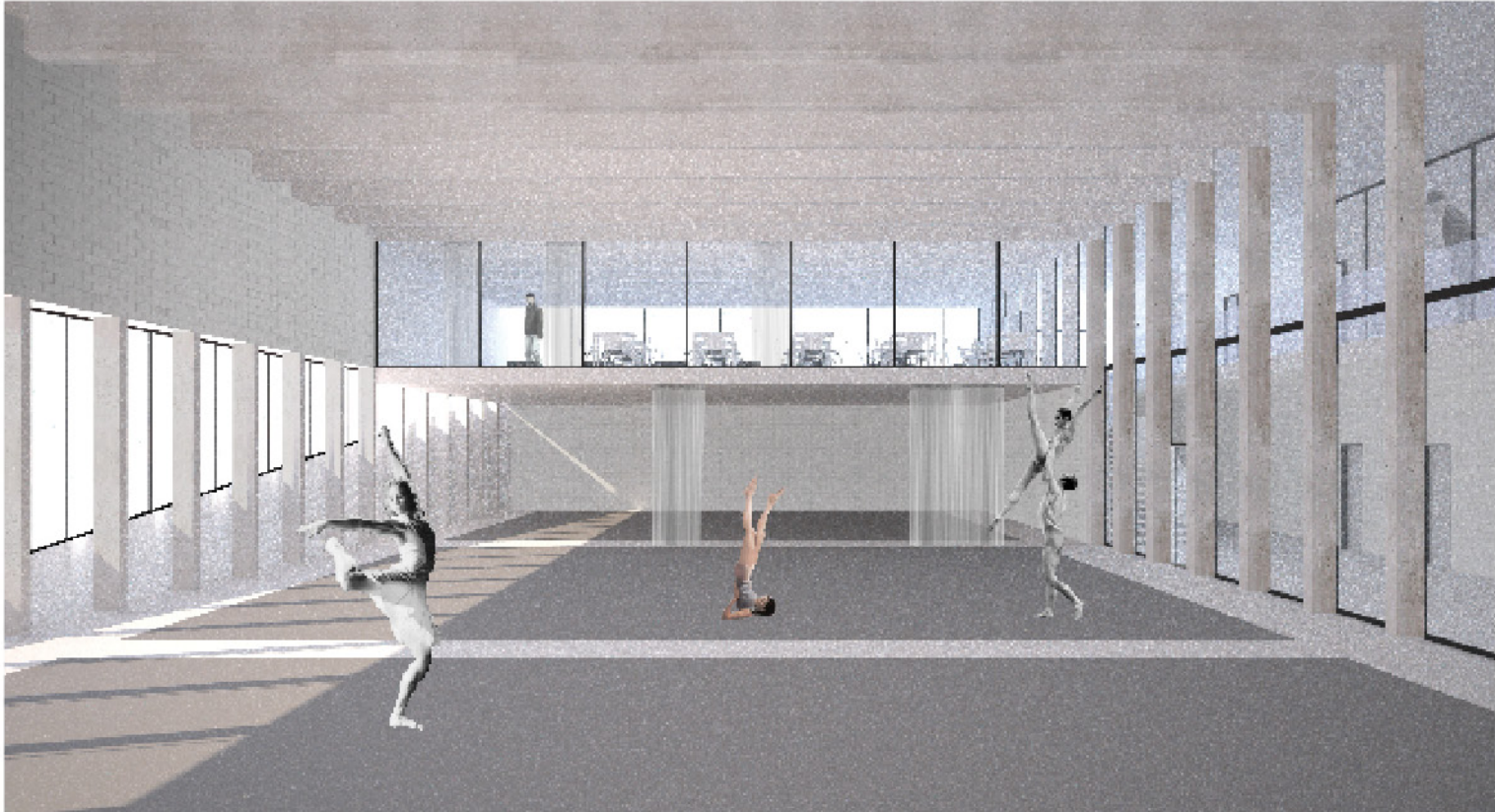






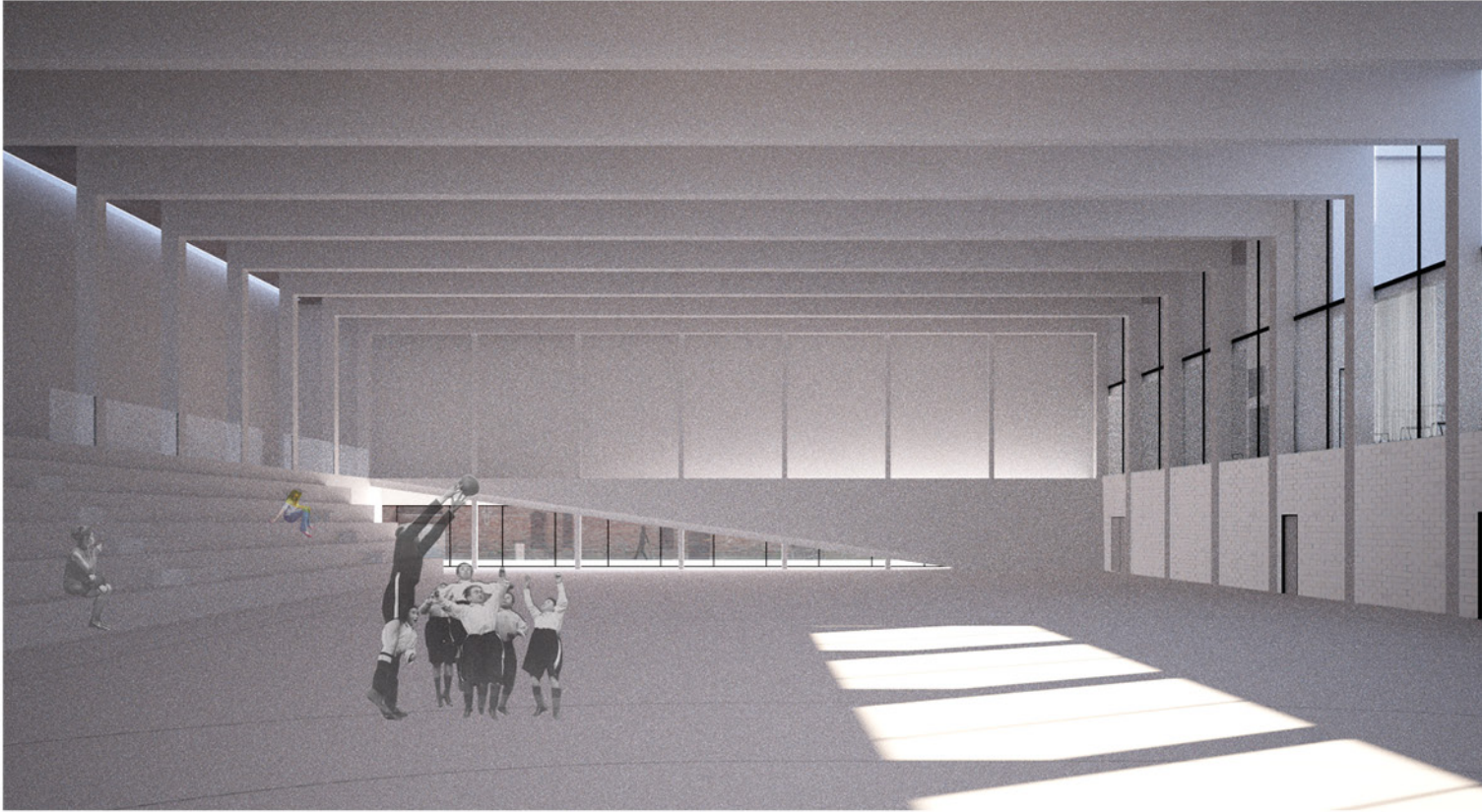


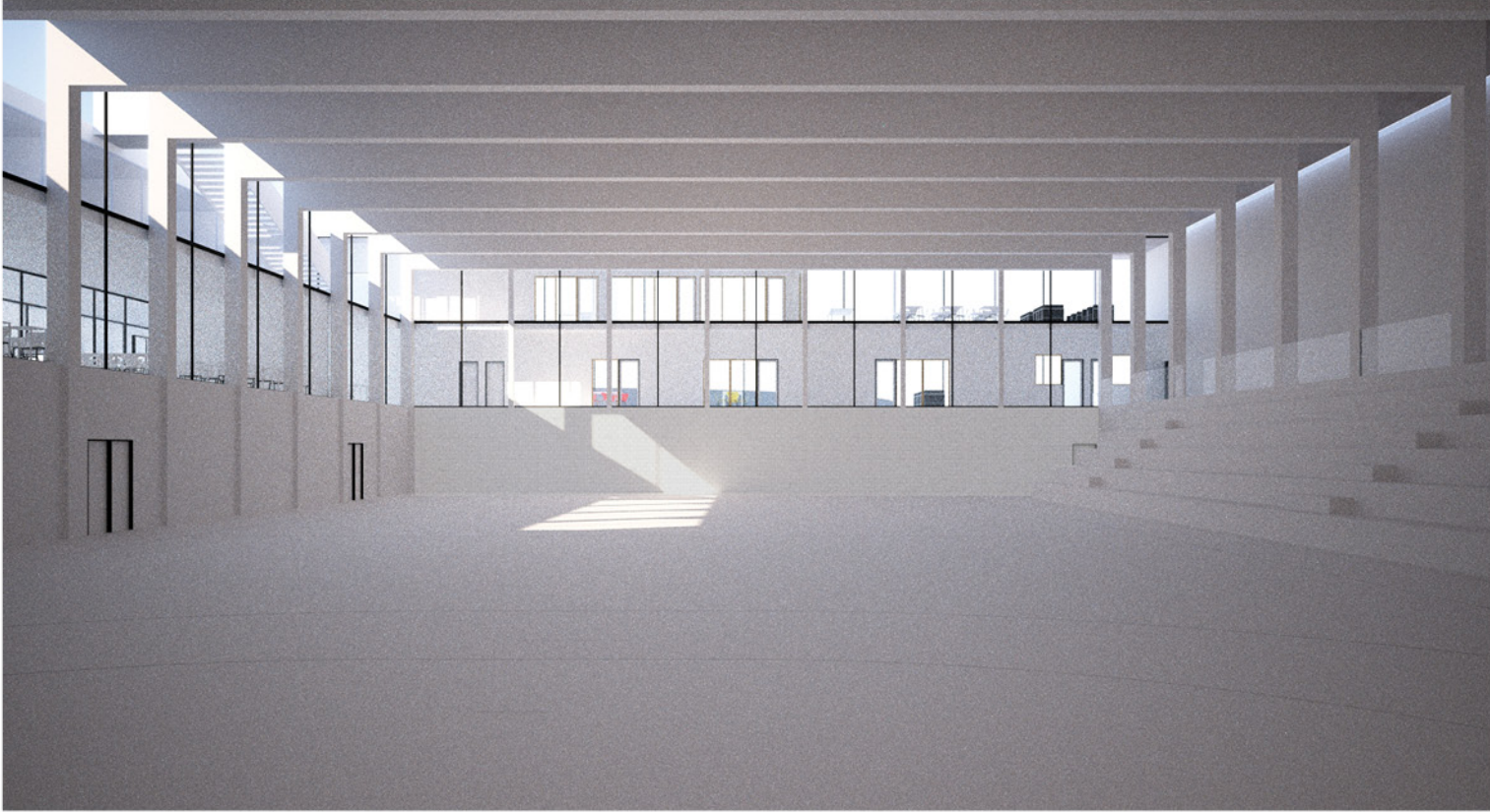


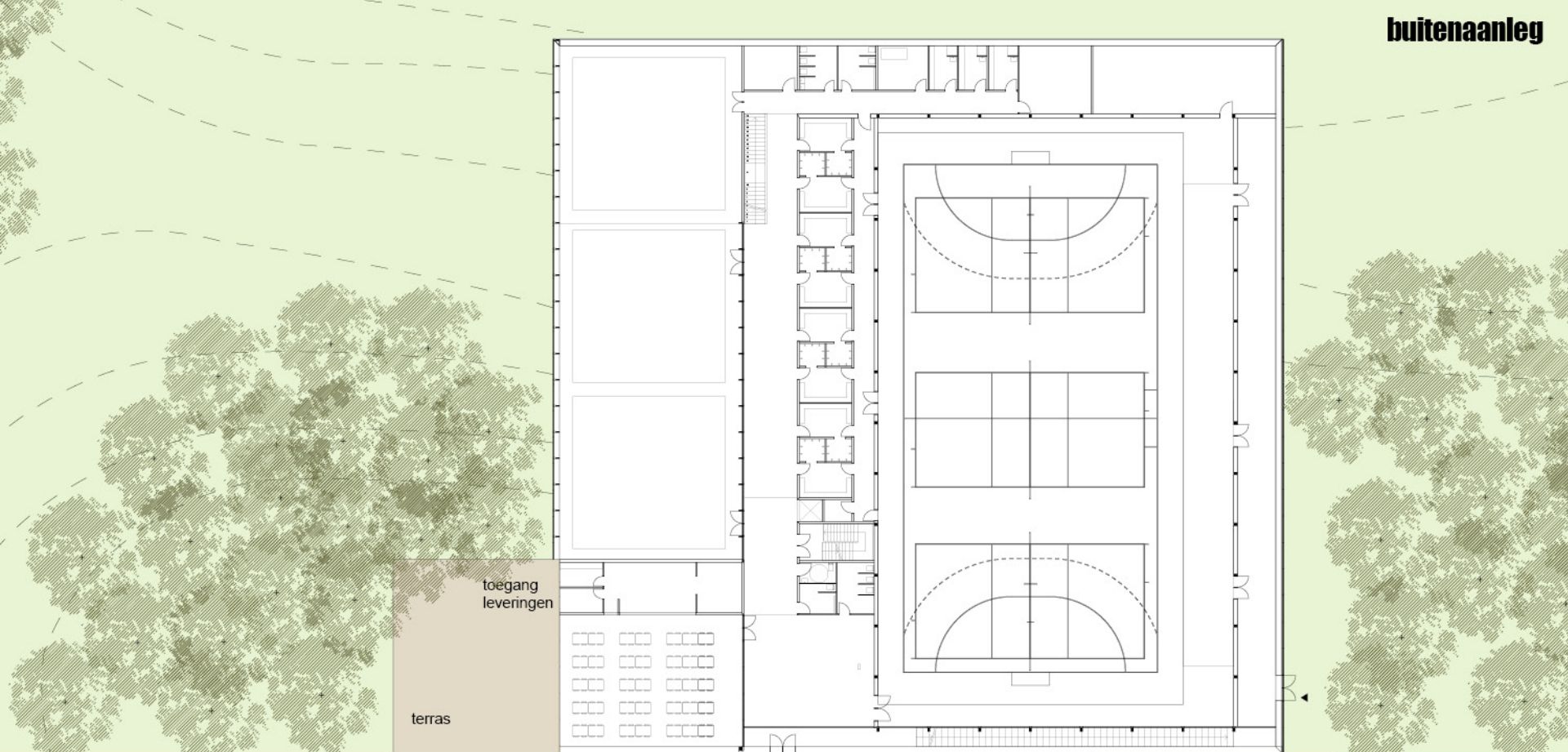






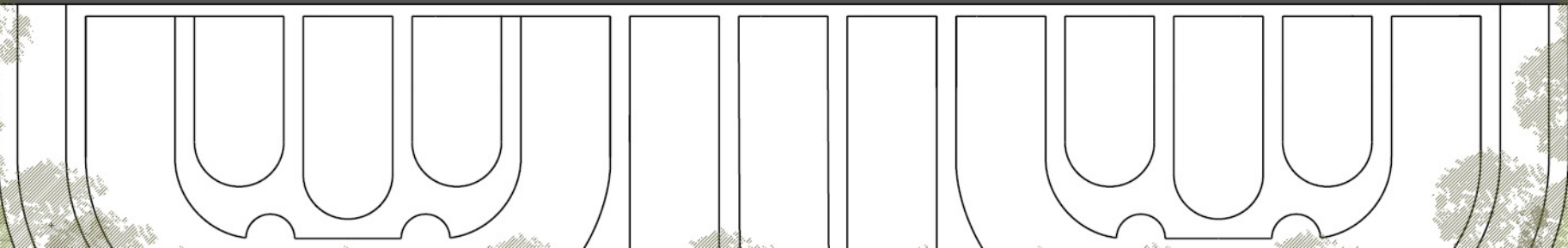


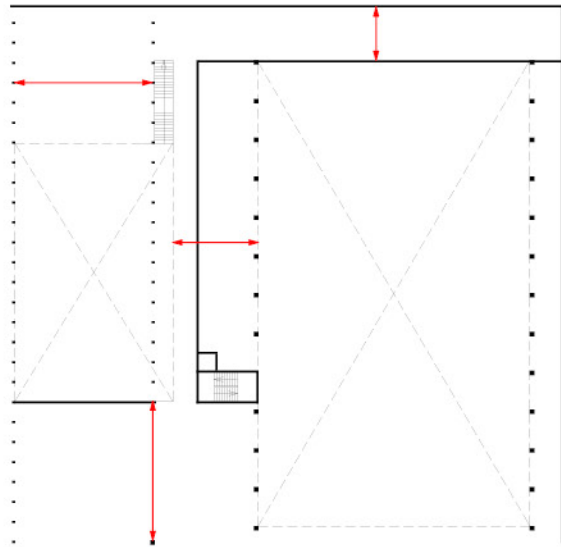




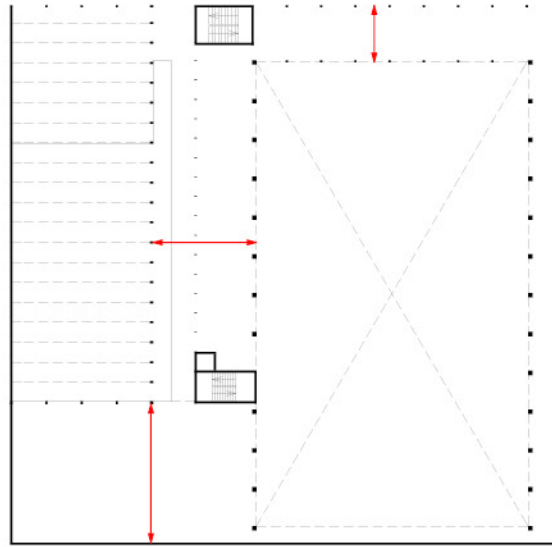
- minibus
- minibus
- minibus
- minibus

- bezoek
- bezoek
- bezoek
- directeur + speed
- personeel + hood

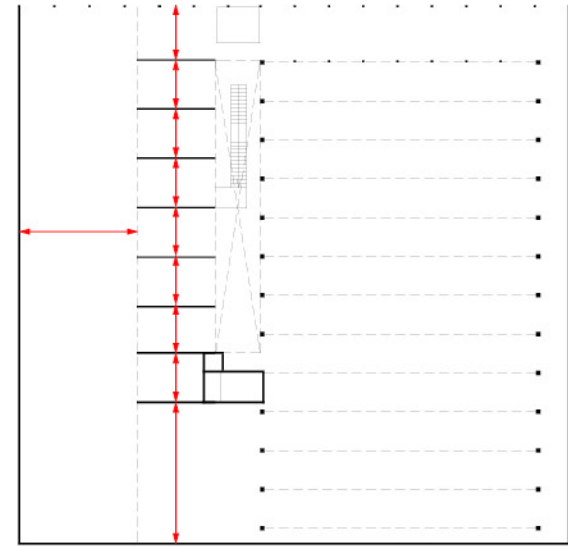




boven gelijkvloers - 1/500



boven niveau +1



boven niveau +2 (dakplaat)

1. Milieu : Passiefbouw

2. Economie : bouwkost, onderhoudskost, flexibiliteit

3. Sociale en culturele relevantie : natuur, erfgoed, sport, onderwijs







