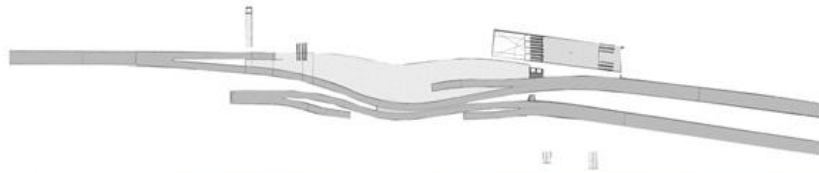
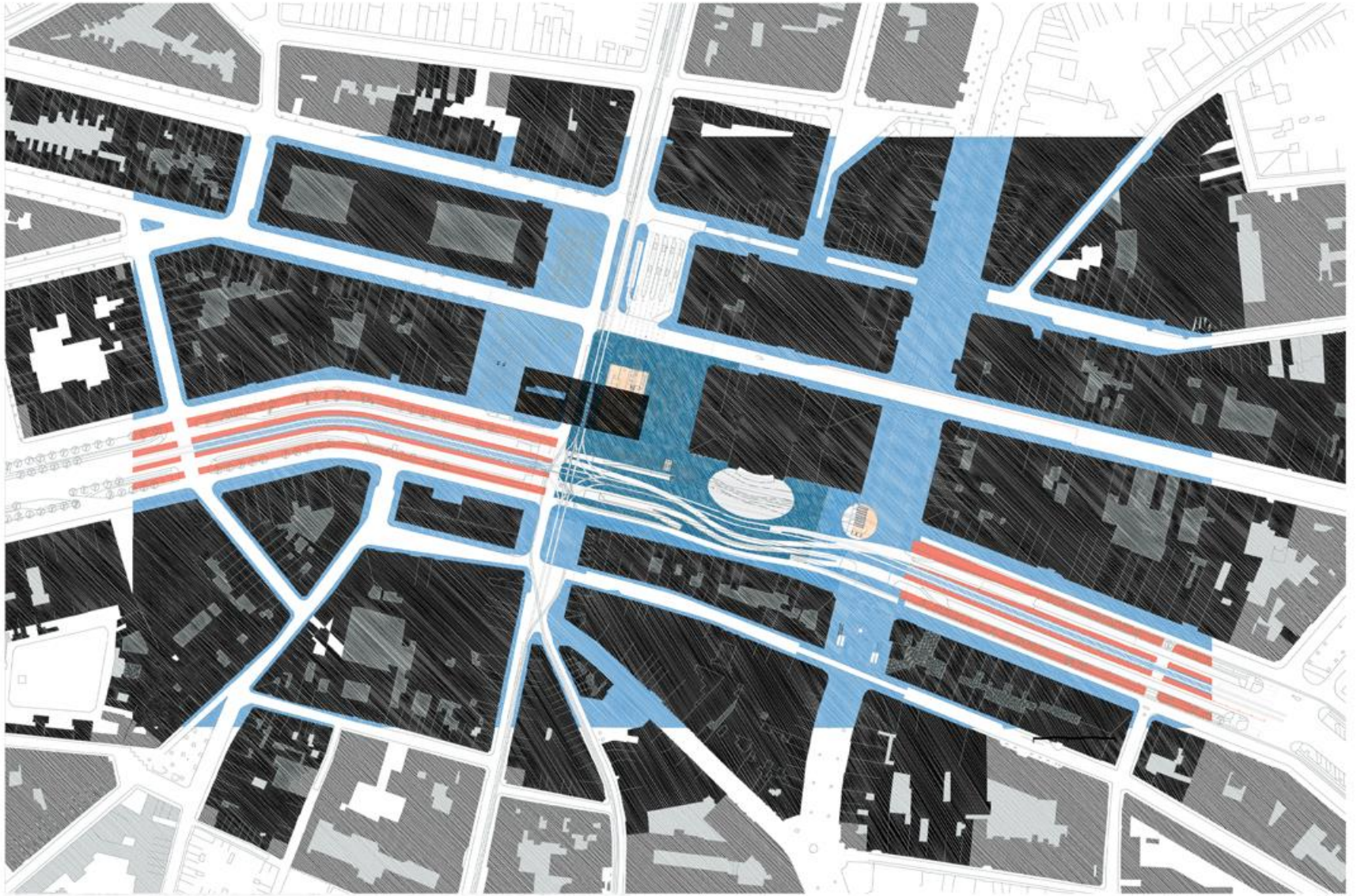




MANUEL de SOLA
ARQUICTECTE, September 2004

CONCEPTONTWERP VON DER HERINRICHTING
VAN DE PIBLIEKE RUIJITE
TER HOOGTE VAN DE OPERA TE ANTWERPEN



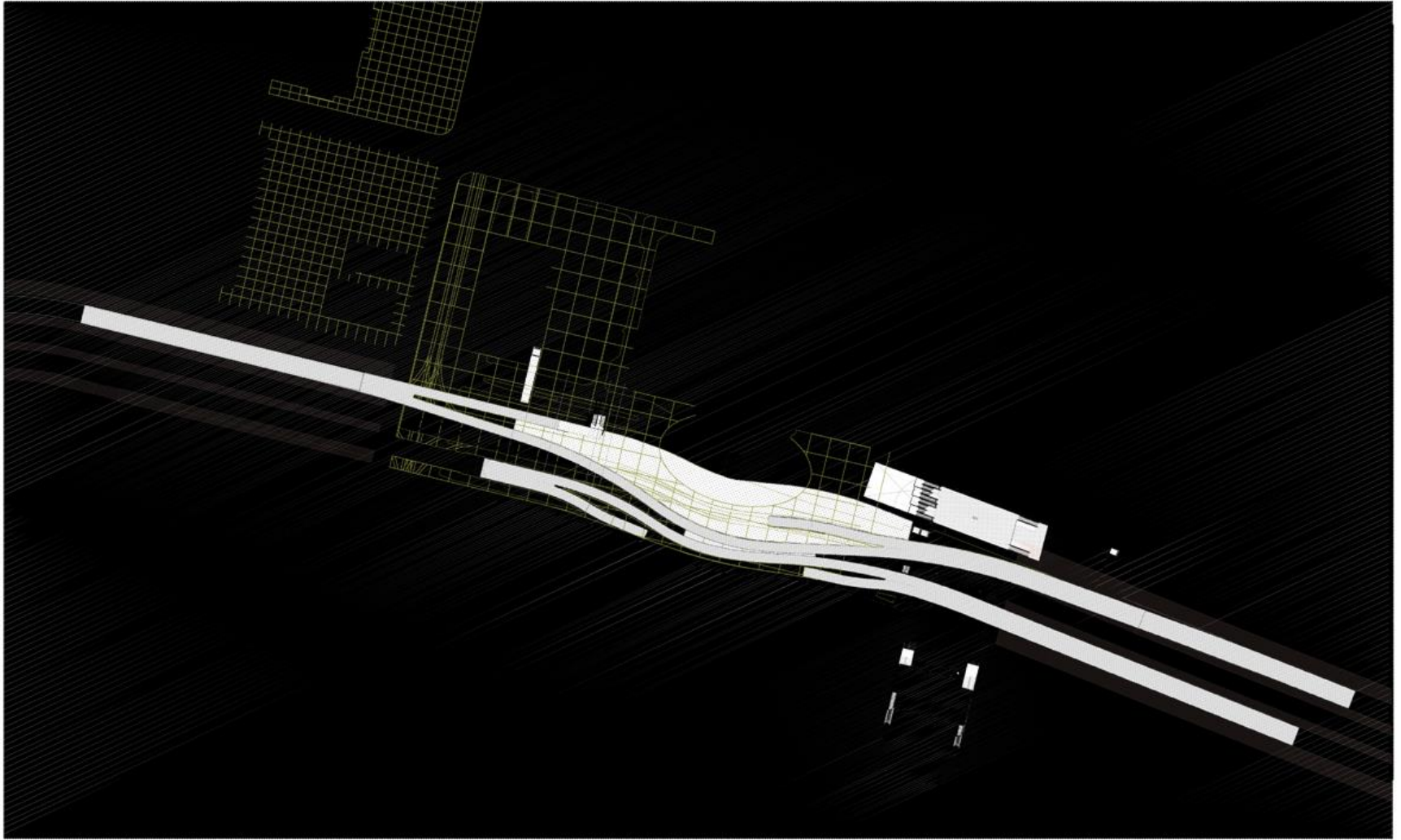


1-1

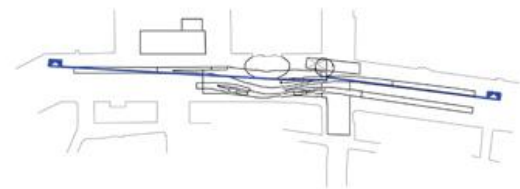
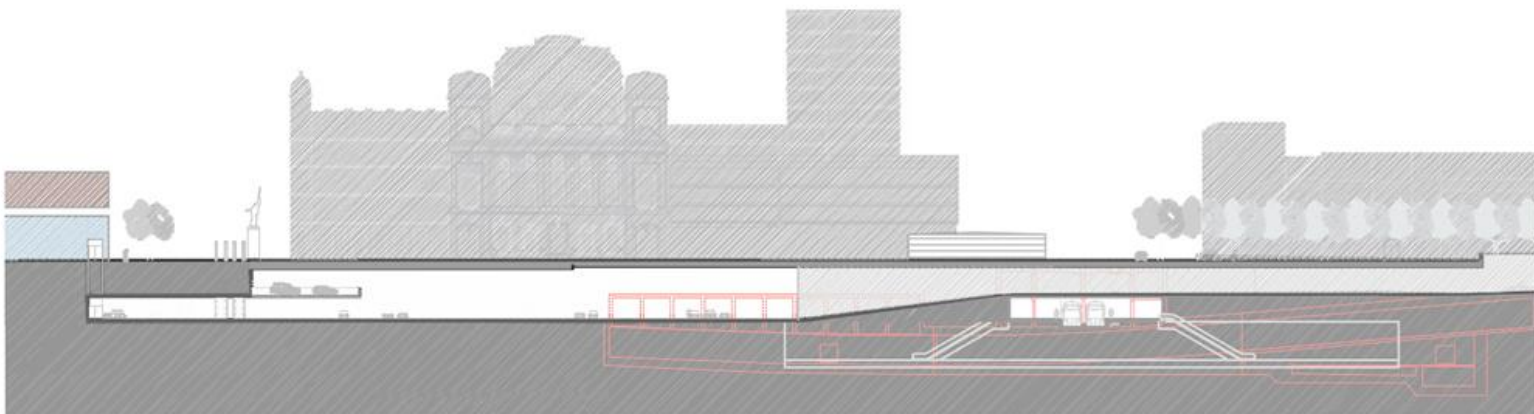
OVERALL CITY PLAN



MANUEL de SOLA
ARQUITECTE, September 2004



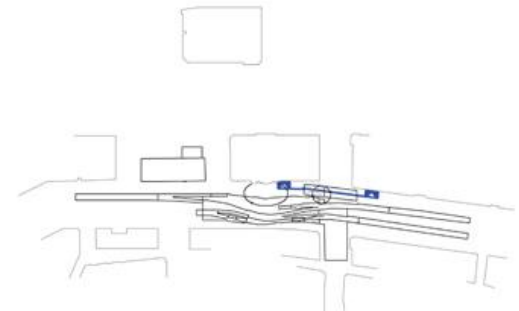
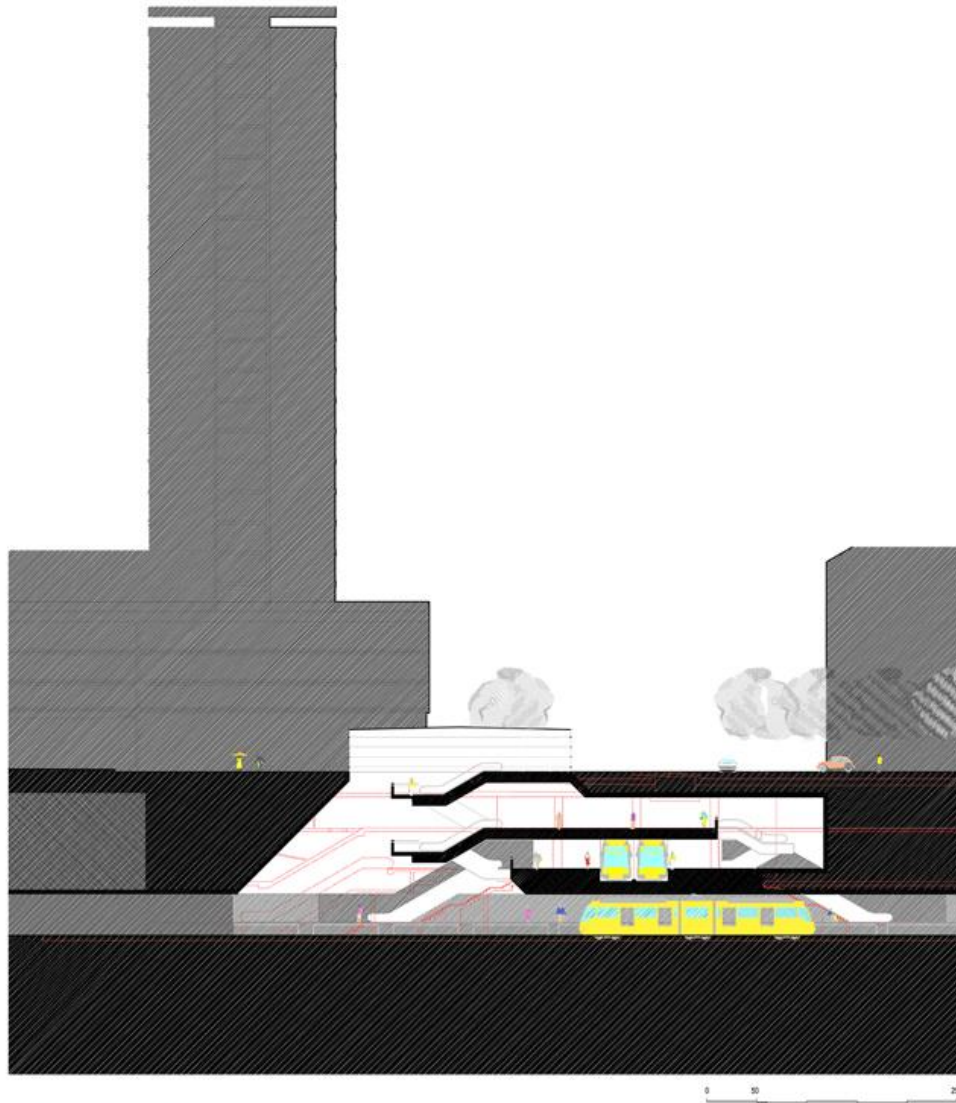




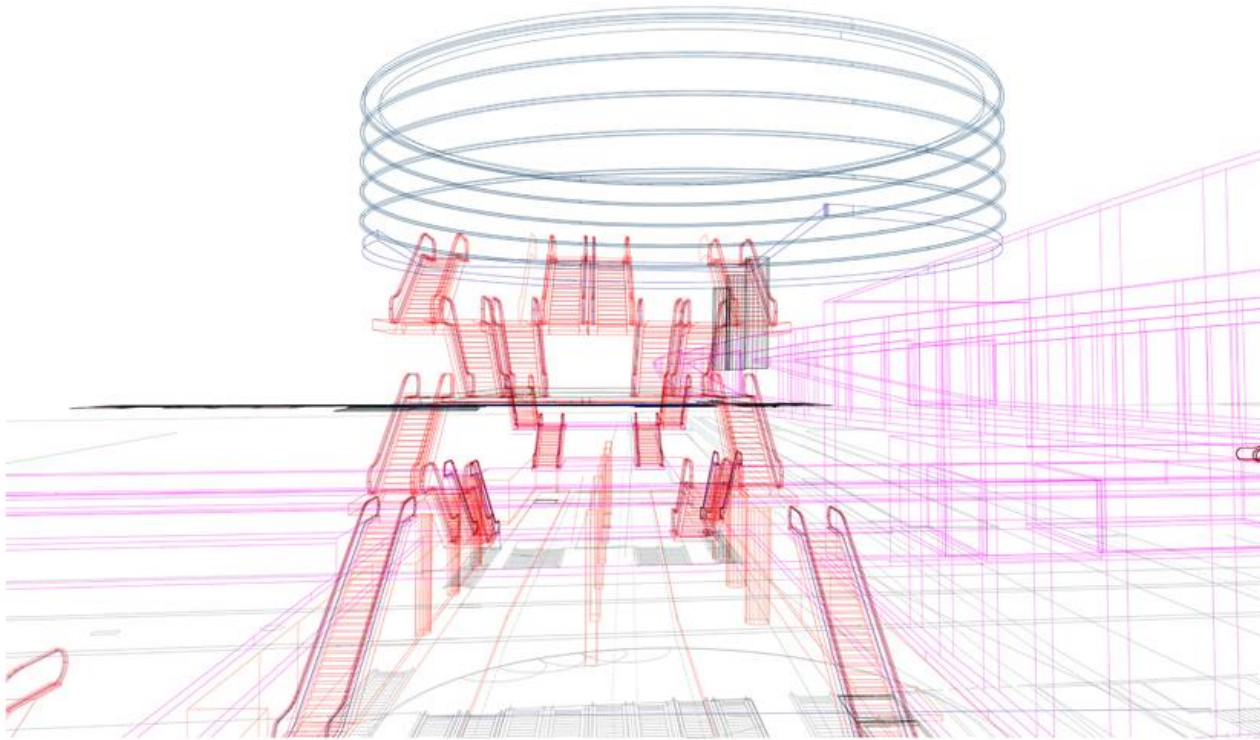
1-2
North-South Section
along Leien frontage



- 1- Facade
- 2-Tramway
- 3-Trees
- 4-Leien roads (2+2)
- 5- Sidewalks



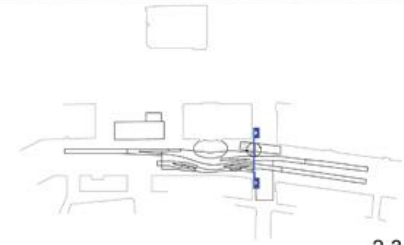
2-2
 TRAM-TRAIN STATION
 Section through Light Pit across Keiser Lei



2-1
THE LIGHT PIT



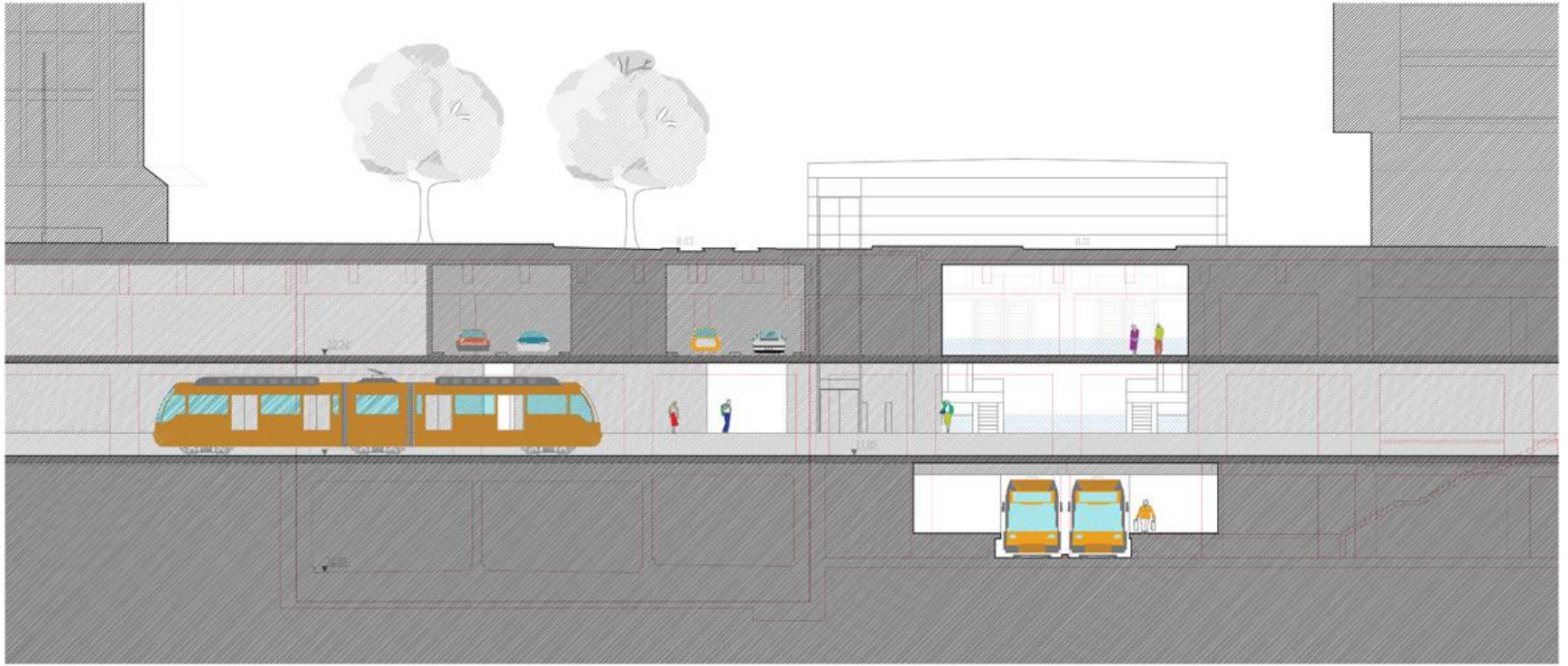
0 5 25



2-3
 TRAM-TRAIN STATION
 Section through Light Pit across Leien

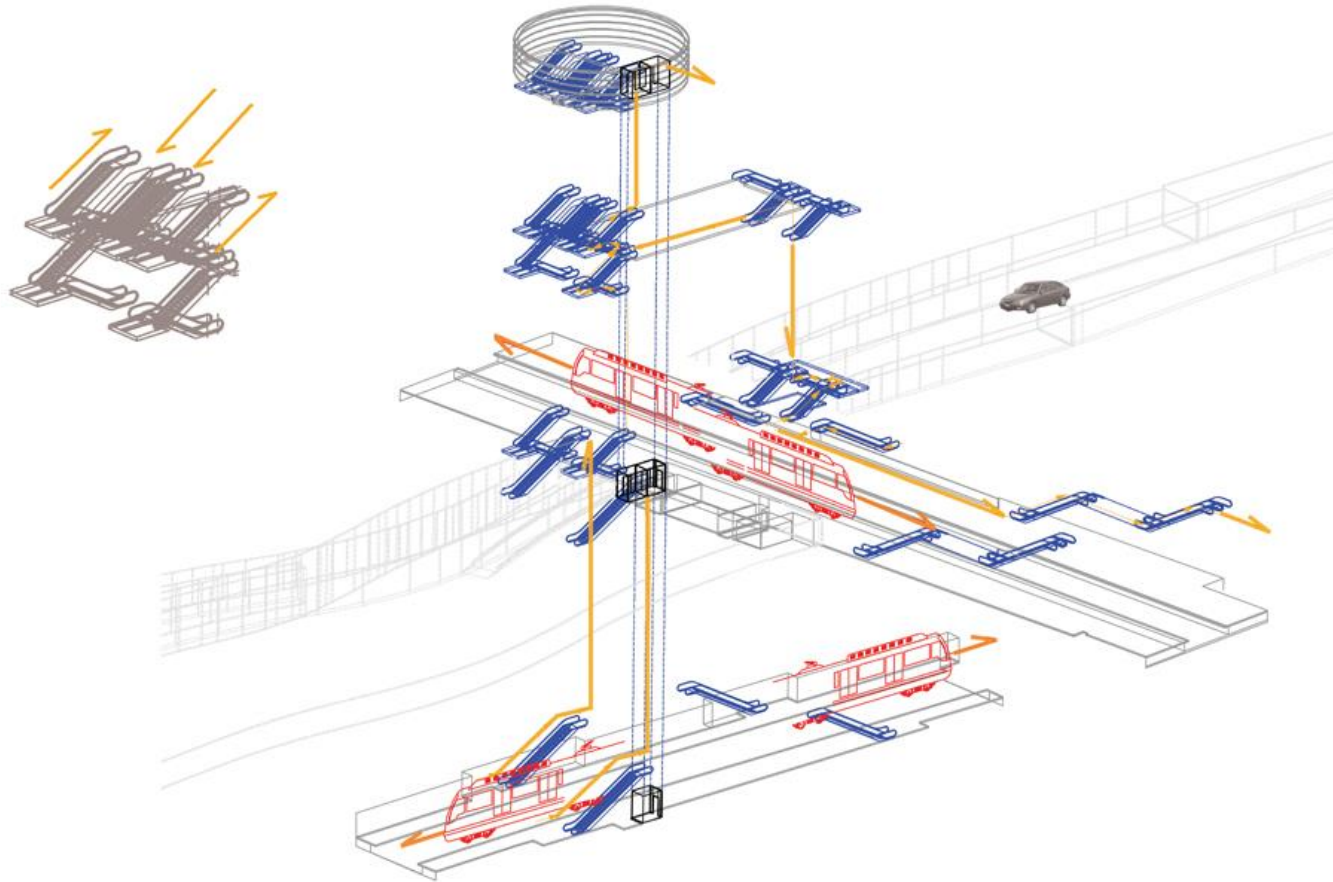


MANUELSOLA
 ARQUITECTE, September 2004

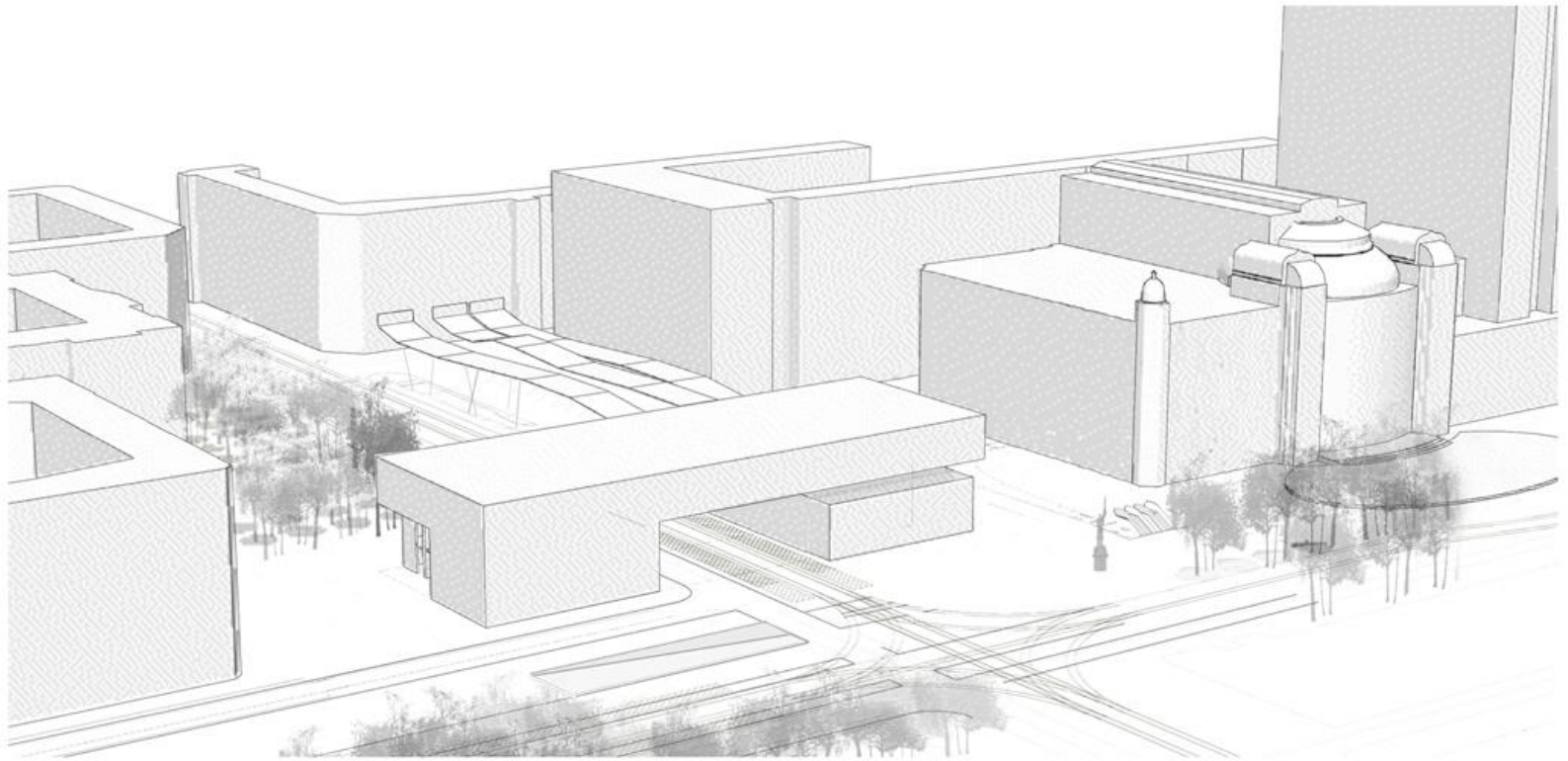


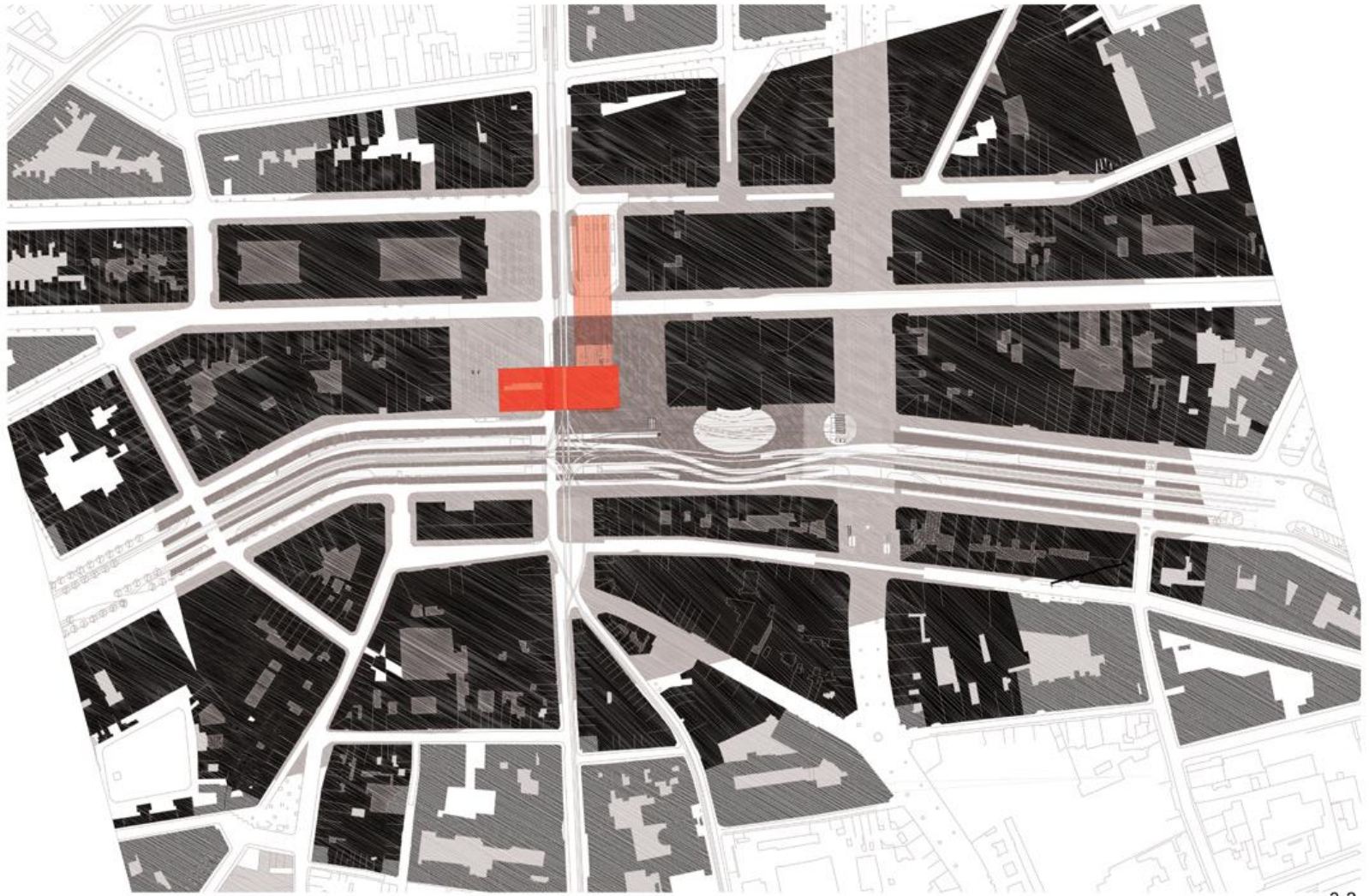


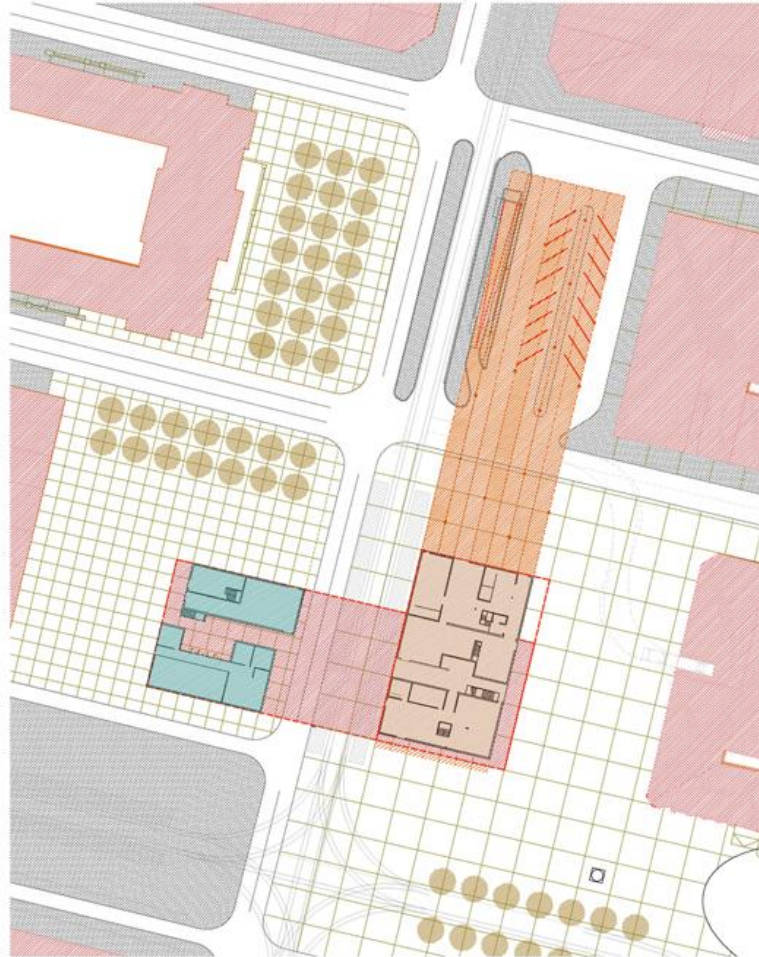
2-5
ENTRANCE VIEW

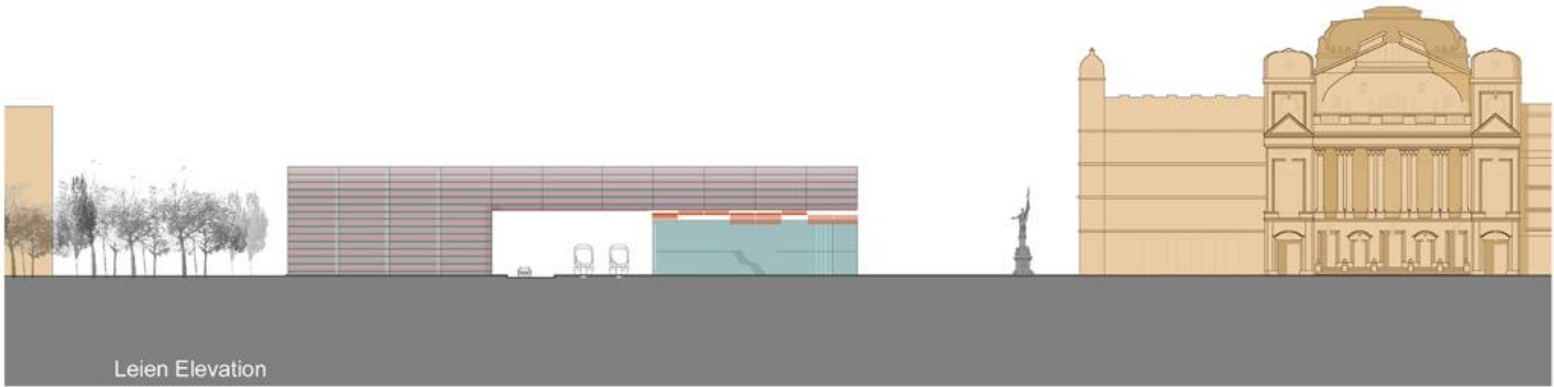


2-6
Fluxes Diagram





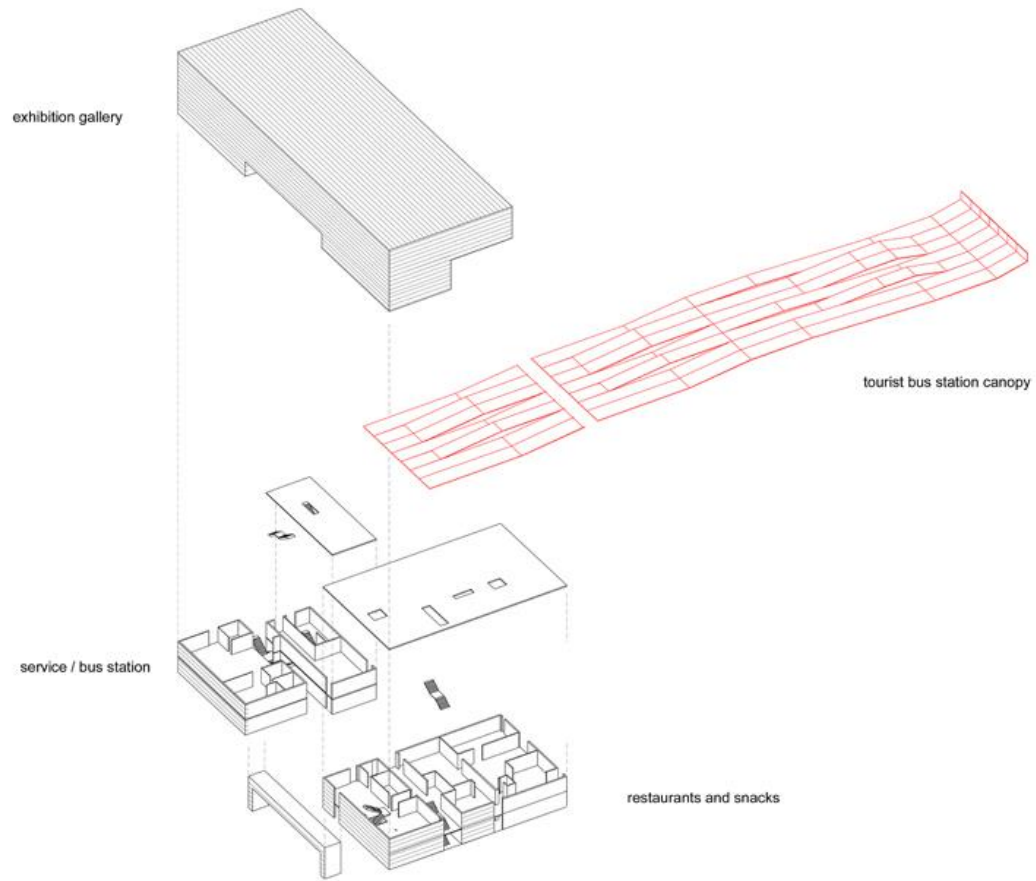




Leien Elevation



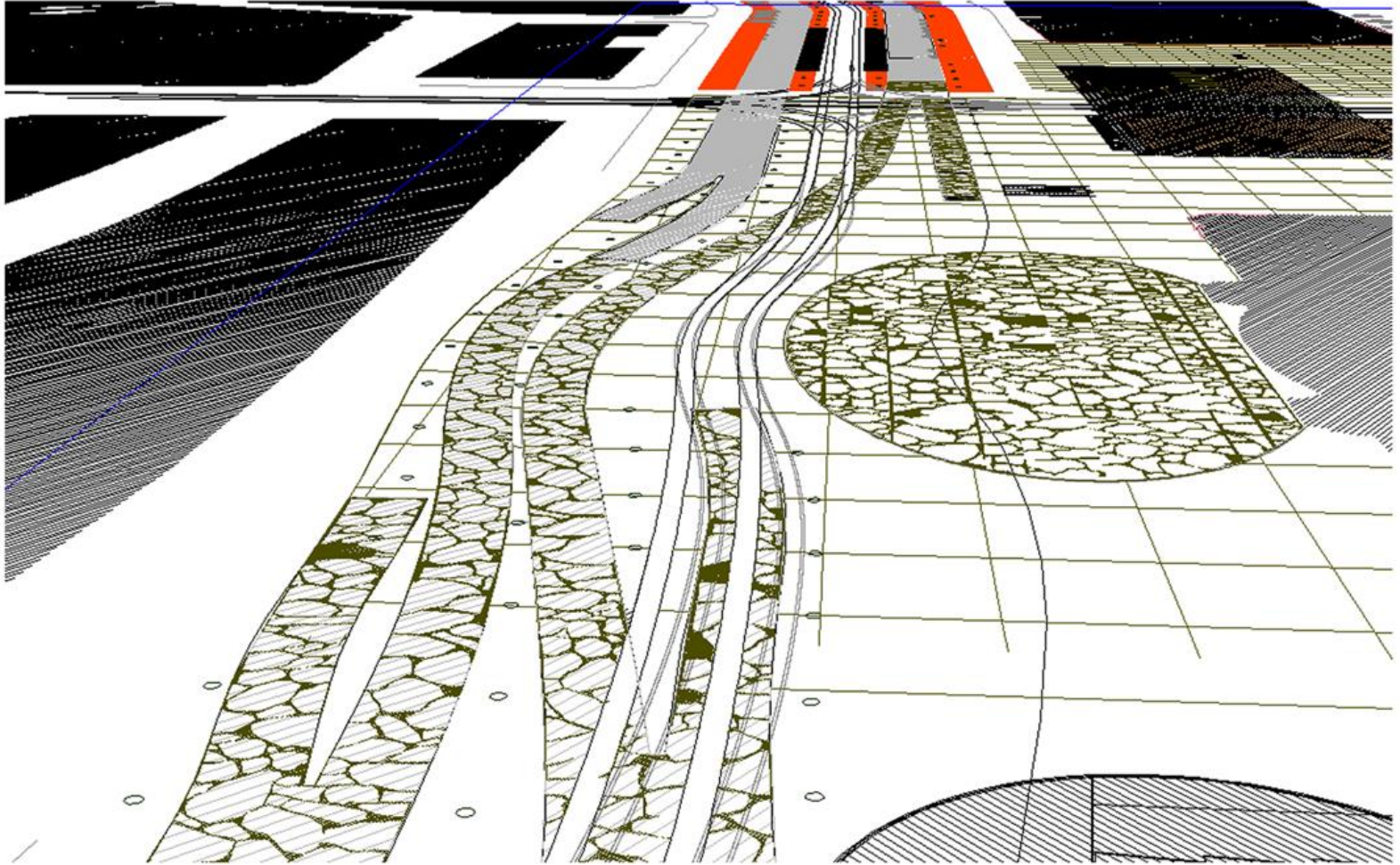
Rooseveltplaats South Elevation



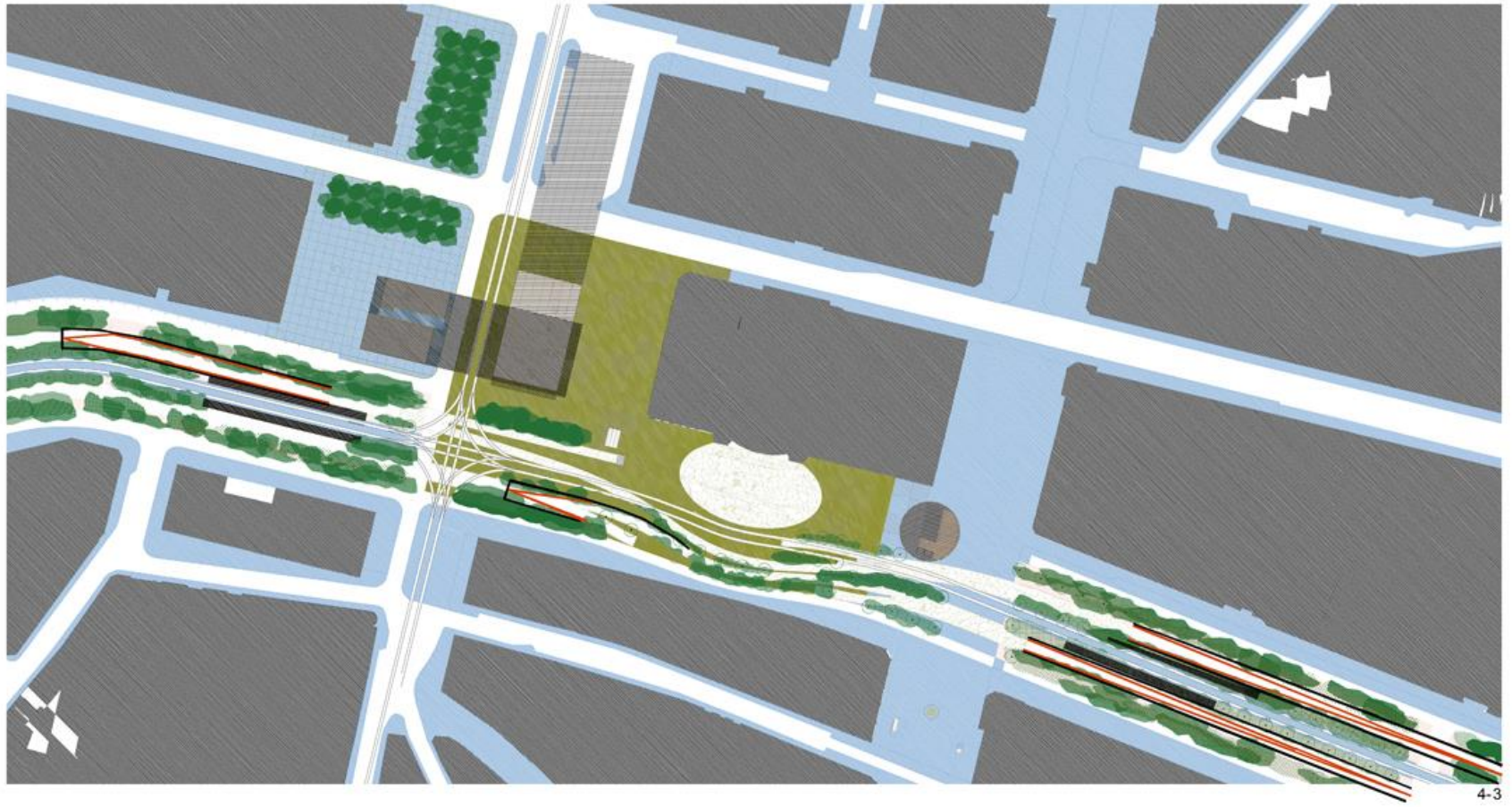


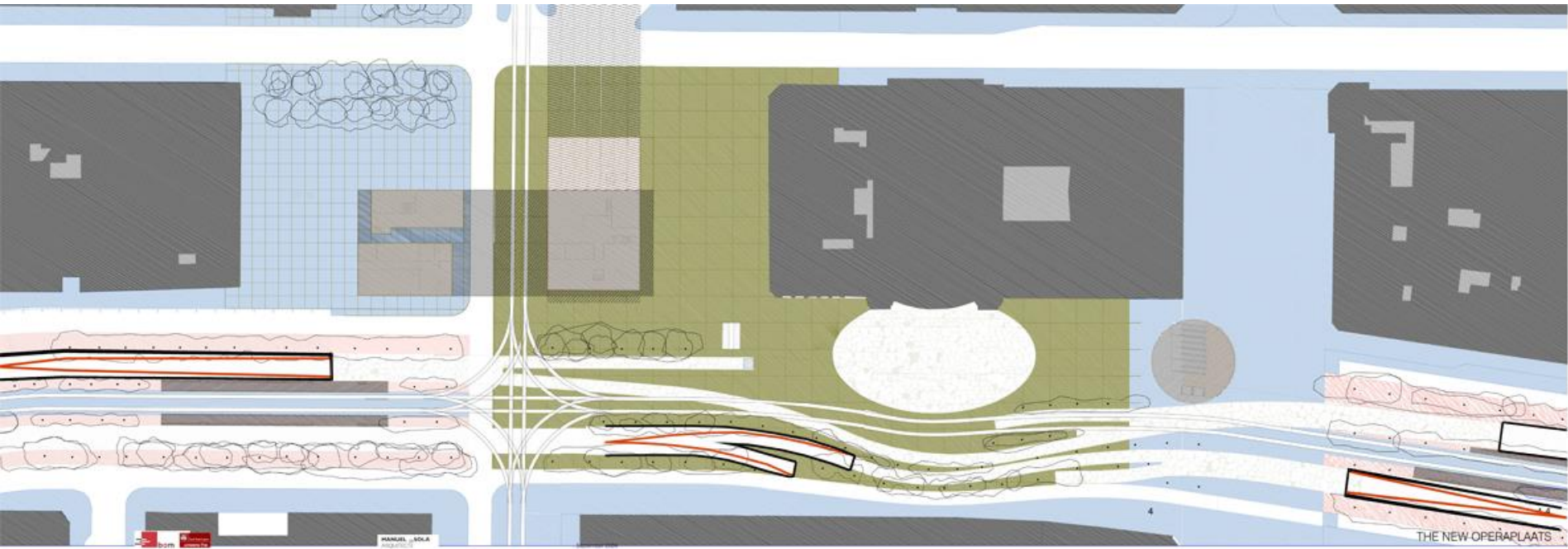


3-5
Kipdorpoort view





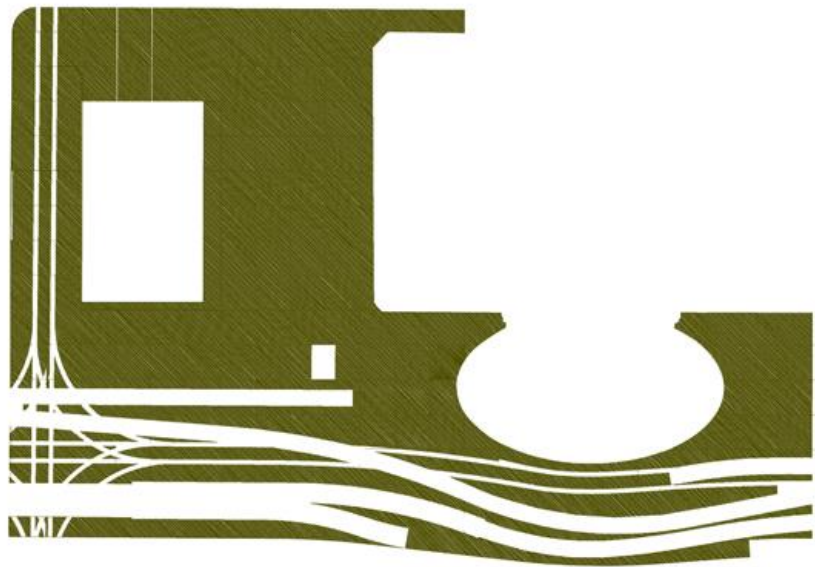
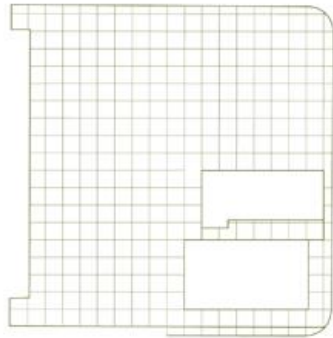
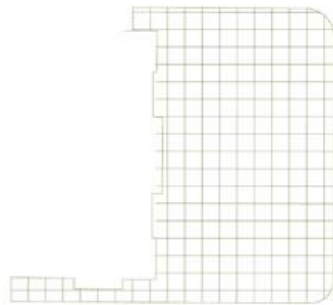


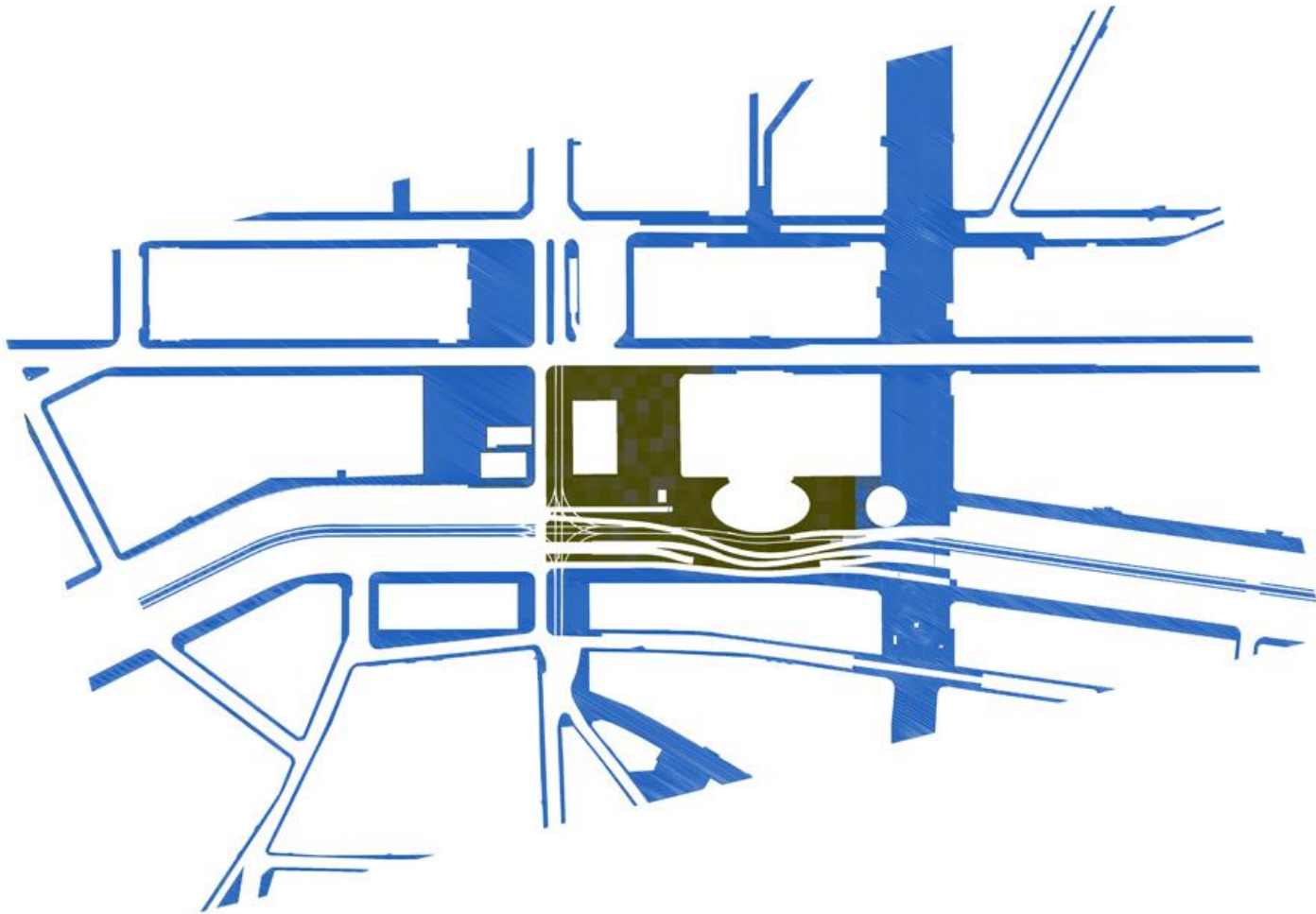


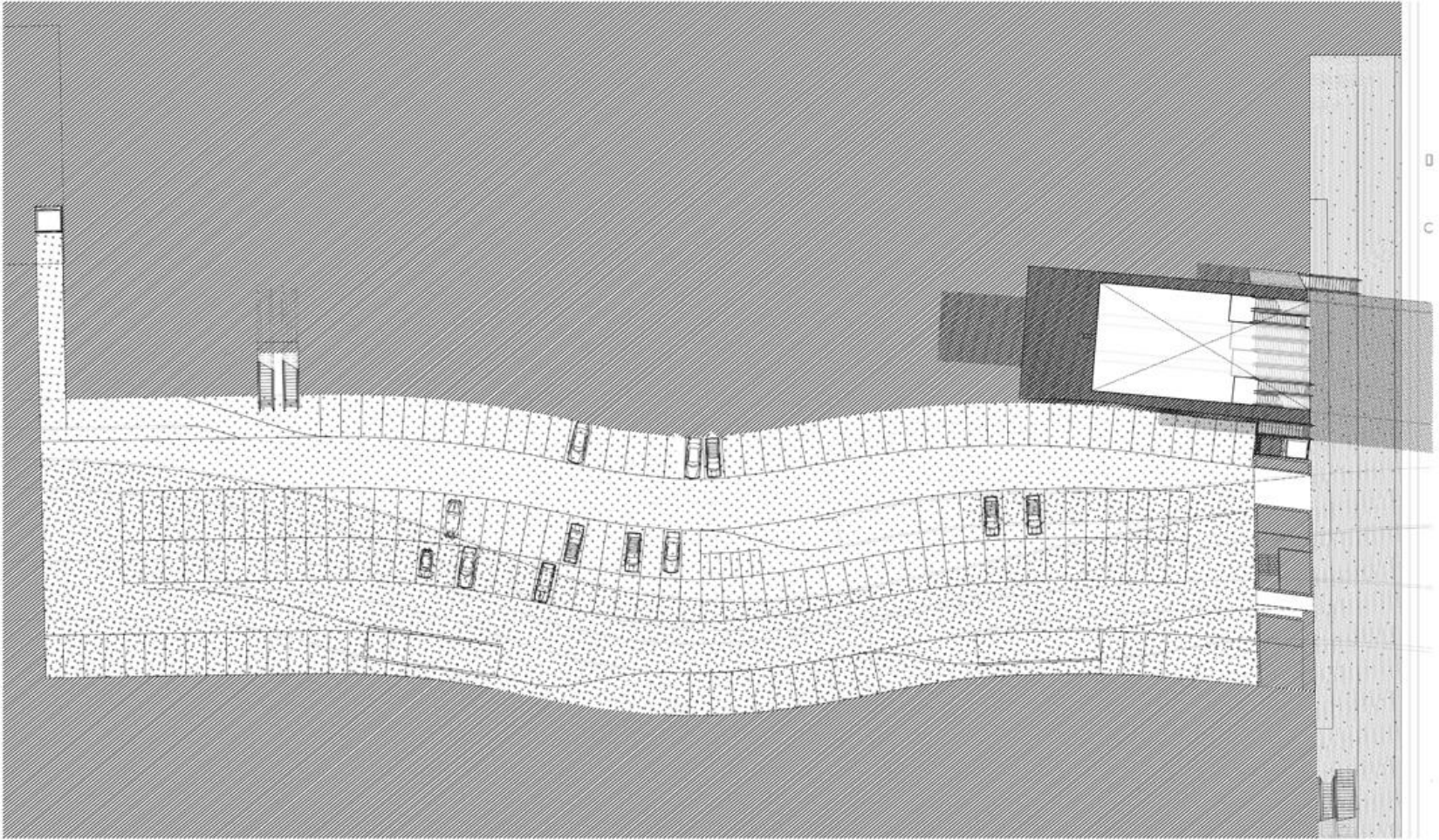
born

MANUEL SOLA

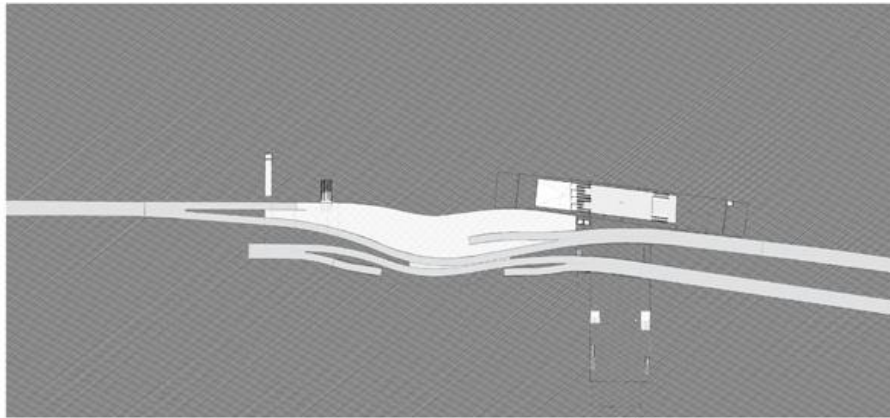
THE NEW OPERAPLAATS



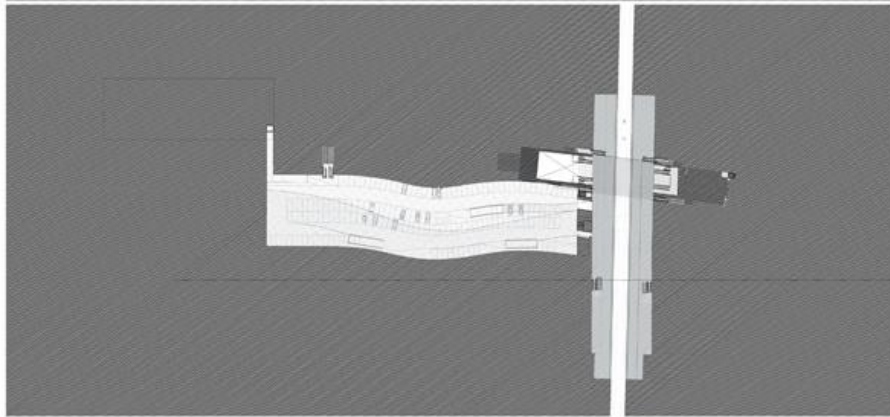




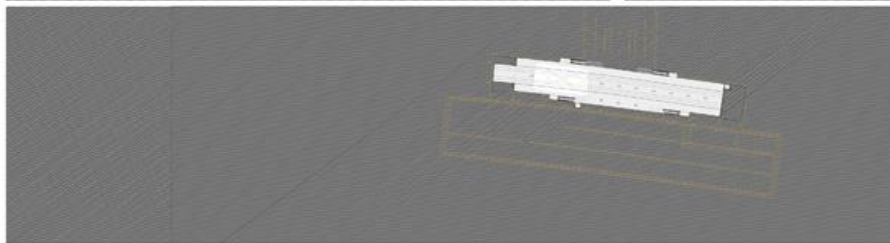
D
C



Level-1



Level-2

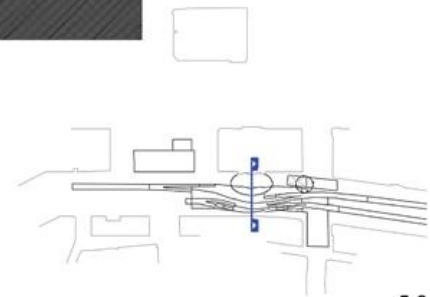


Level-3

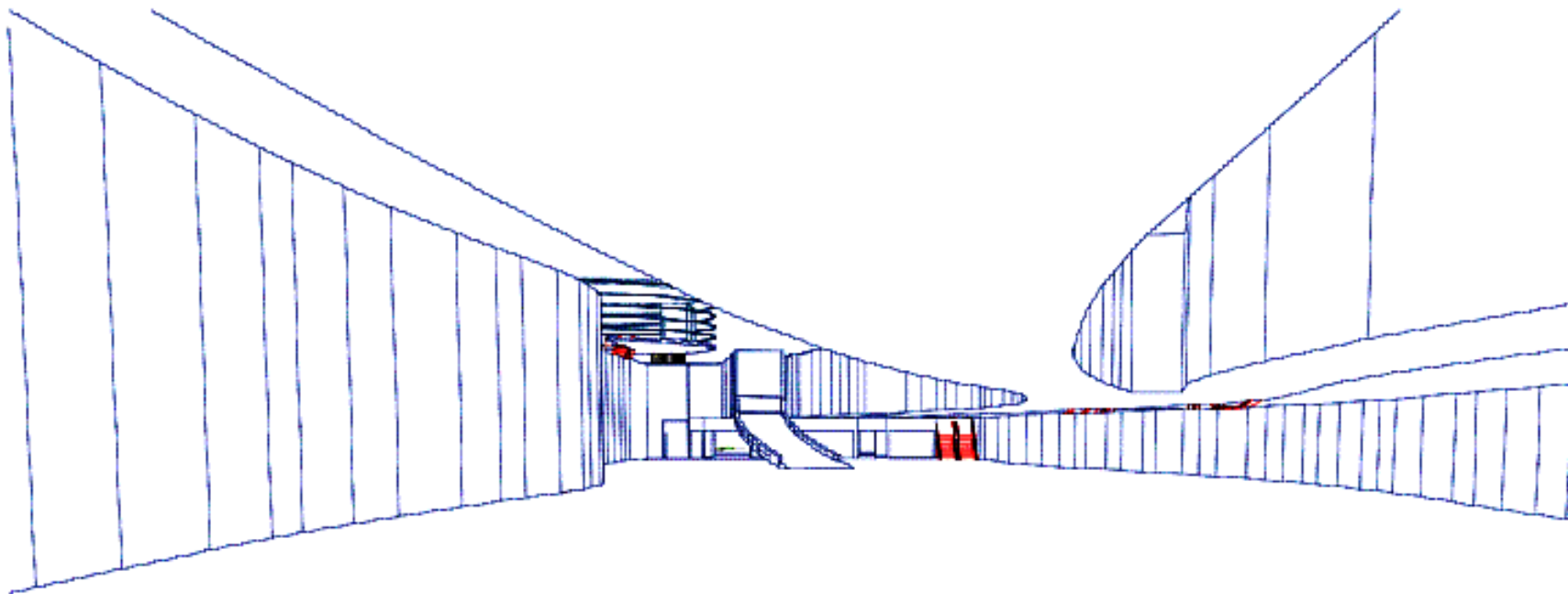




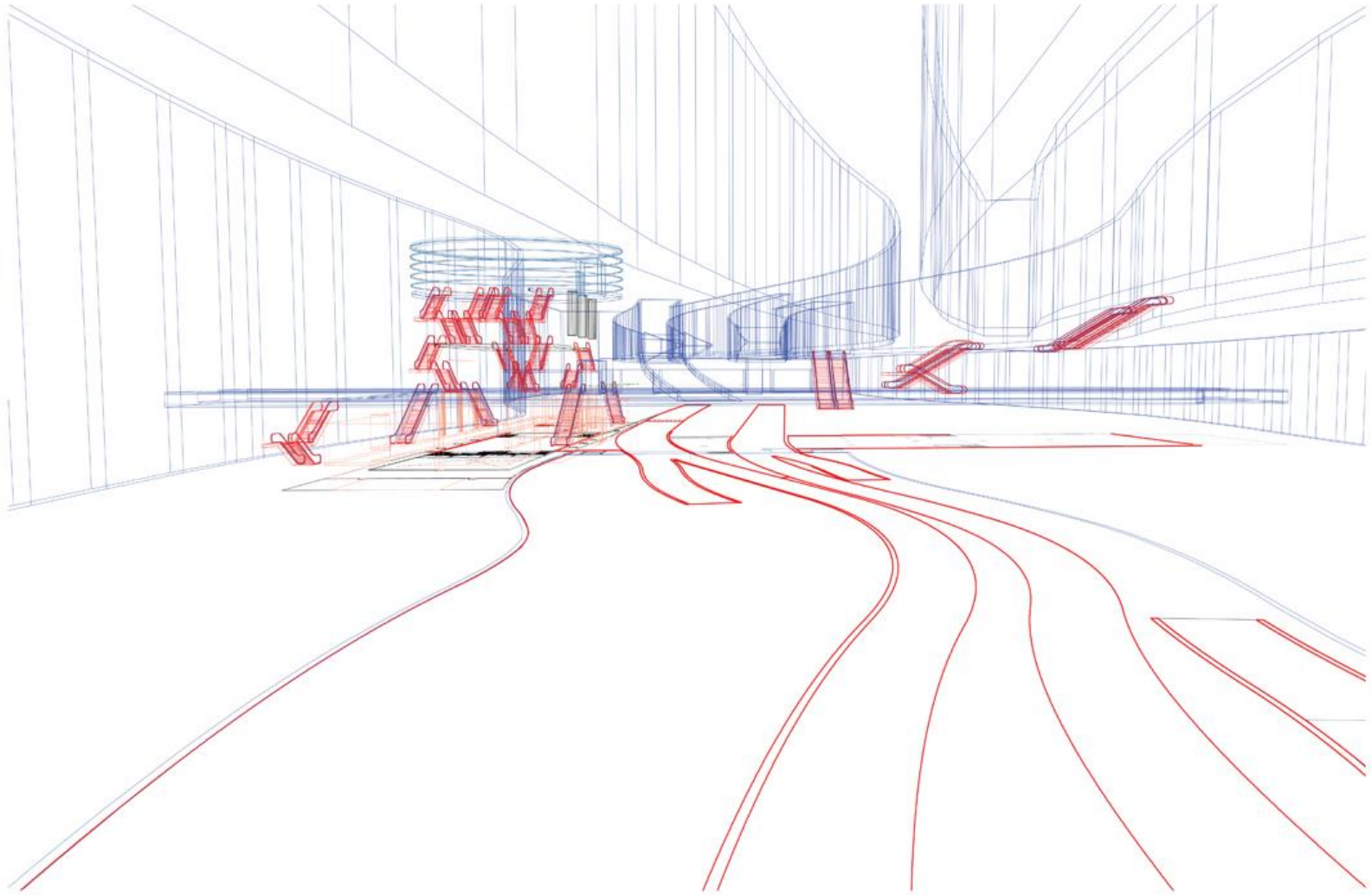
0 50 250



5-3
Section Parking
Opera entrance level



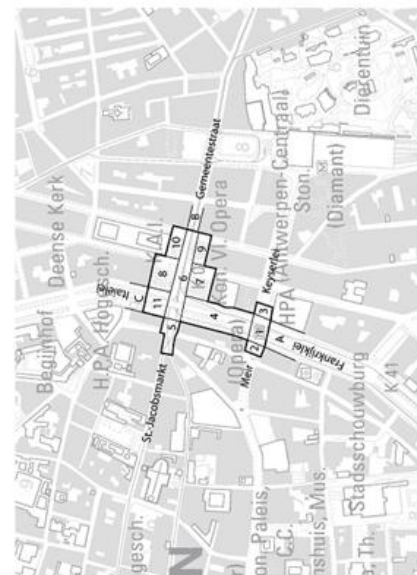
5-4
Parking view looking toward station



5-5
Parking view looking toward Light Pit



0 50 250



6-1
BUDGET AREAS